



# Flygt DL

SUBMERSIBLE SEWAGE PUMP, 50 HZ

**FLYGT**  
a xylem brand

# Flygt DL Submersible Sewage Pump

For domestic, civil and industrial applications like:

- Dirty water and sewage pumping with suspended solids up to 50 mm
- Drainage of cesspools sewage sumps
- Drainage of trenches and marshy grounds

## Construction

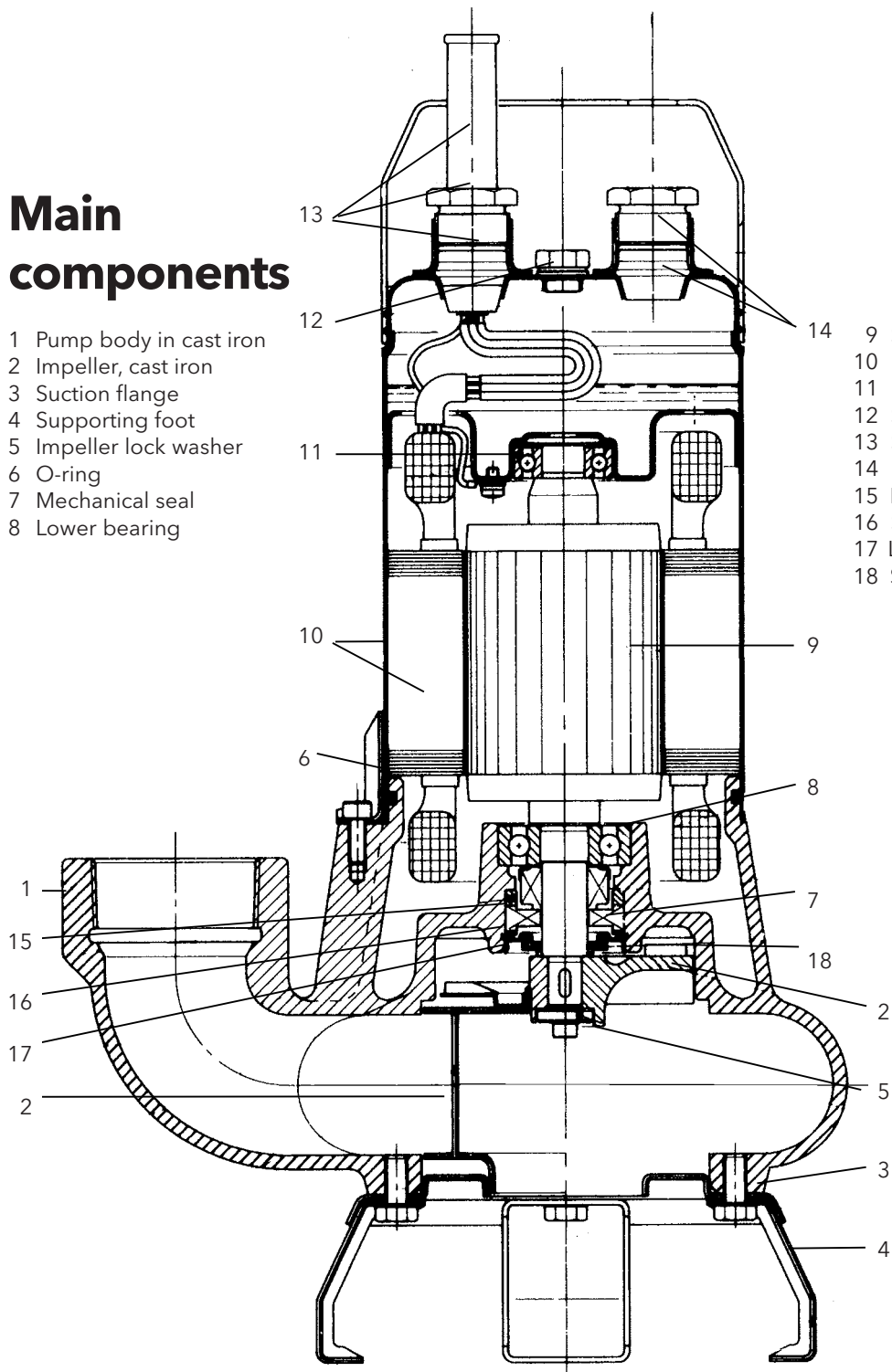
- Common shaft for pump and motor, suitable for total or partial immersion

- Single-channel (DL) or Vortex impeller (DLV)
- Mechanical seal protected by sand labyrinth and lubricated by the motor cooling fluid
- Handle for pump lifting and transport
- 2 pole squirrel cage motor, in a dielectric non-toxic oil bath, enabling ball bearing lubrication with efficient motor cooling. Isolation class F
- Single phase version is delivered with control box

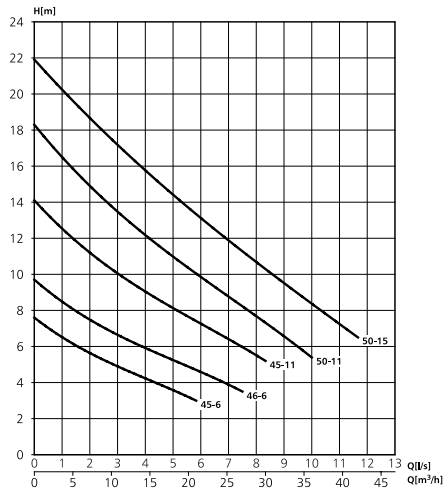
## Main components

- 1 Pump body in cast iron
- 2 Impeller, cast iron
- 3 Suction flange
- 4 Supporting foot
- 5 Impeller lock washer
- 6 O-ring
- 7 Mechanical seal
- 8 Lower bearing

- 9 Shaft & rotor
- 10 Motor housing with stator
- 11 Upper bearing
- 12 Shaft & washer
- 13 Supply cable gland
- 14 Insert & union plug
- 15 Mechanical seal spacer
- 16 Shoulder seal washer
- 17 Labyrinth seal cover
- 18 Sand slinger

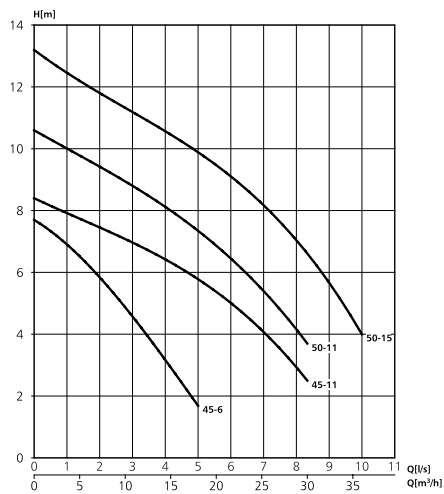


**DL 45-6, 46-6, 45-11, 50-11 & 50-15**

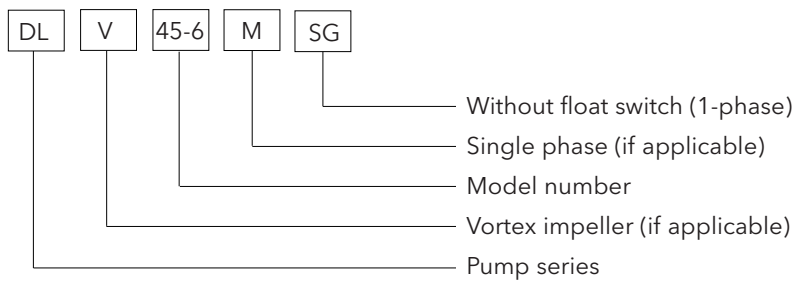


DL	45-6	46-6	45-11	50-11	50-15
Rated output kW	0.6	0.6	1.1	1.1	1.5
Max head m	7.5	9.5	14.0	18.5	22.0
Max flow l/min	350	450	500	600	700
Rated current					
1-phase A	3.9	4.3	-	6.9	-
3-phase A	2.1	2.2	2.7	3.1	3.8
Voltage 1-phase 230V, 3-phase 400V					
Max temp of pumped liquid			25°C with pump partially submerged 50°C with pump fully submerged		
Cable HO7RN-F				5 m	
Float switch for 1-phase				optional	

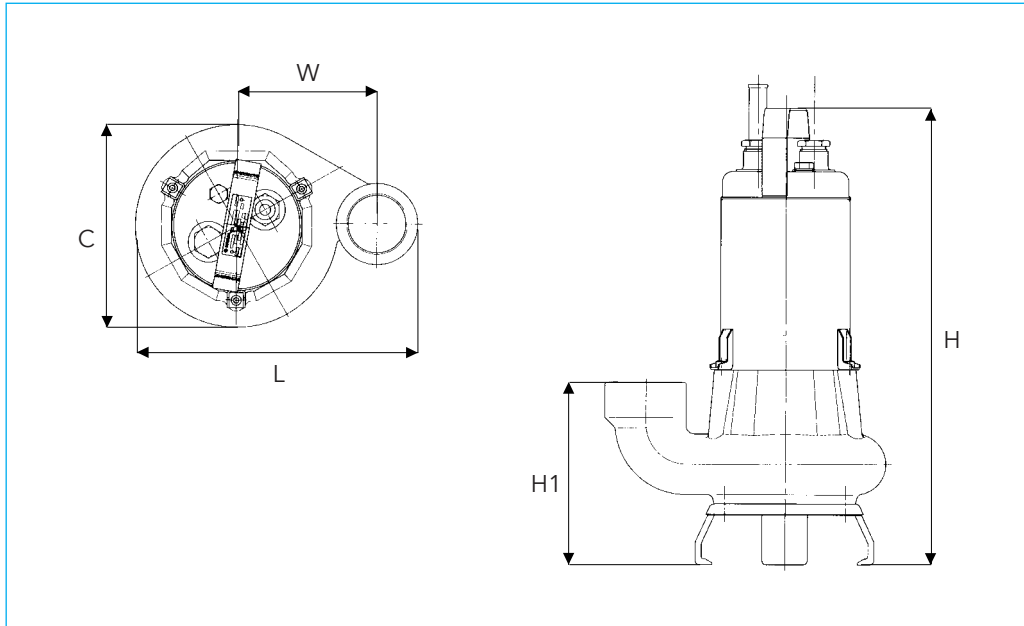
**DLV 45-6, 45-11, 50-11 & 50-15**



DLV	45-6	45-11	50-11	50-15
Rated output kW	0.6	1.1	1.1	1.5
Max head m	7.0	8.5	10.5	13
Max flow l/min	300	500	500	600
Rated current				
1-phase A	4.8	-	7.3	-
3-phase A	2.4	3.0	3.2	3.9
Voltage 1-phase 230V, 3-phase 400V				
Max temp of pumped liquid			25°C with pump partially submerged 50°C with pump fully submerged	
Cable HO7RN-F				5 m
Float switch for 1-phase				optional



## Pump dimensions and weights



Pump type	Sizes mm					DNM	Weight kg
	C	h	h1	L	W		
DL 45-6	200 Ø	455	180	278	138	2"	19.5
DL 46-6	200 Ø	455	180	278	138	2"	20.5
DL 45-11	200 Ø	455	180	278	138	2"	21.0
DL 50-11	239 Ø	486	180	343	183	2"	27.0
DL 50-15	239 Ø	486	180	343	183	2"	27.0
DLV 45-6	200 Ø	455	180	278	138	2"	19.0
DLV 45-11	200 Ø	455	180	278	138	2"	19.0
DLV 50-11	239 Ø	486	180	343	183	2"	27.0
DLV 50-15	239 Ø	486	180	343	183	2"	27.0



Flygt is a brand of Xylem. For the latest version of this document and more information about Flygt products visit [www.flygt.com](http://www.flygt.com)