



Godwin NC80 Rig Pump

SMALL/COMPACT, THE MOST RELIABLE AND SAFE OPTION
TO DEWATER YOUR MINE

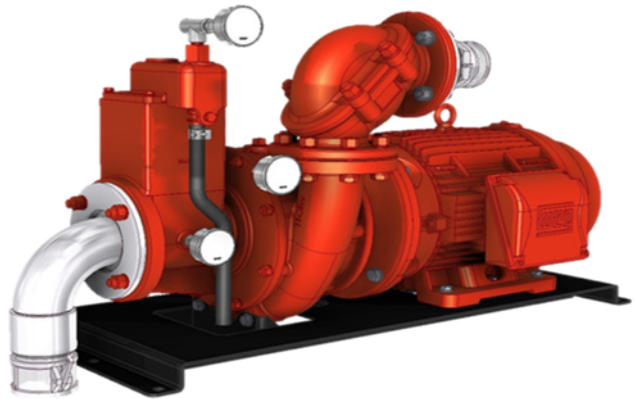
godwin 
a xylem brand

NC80 Dri-Prime[®] Pump

The Godwin Dri-Prime NC80 pump is an extremely powerful yet compact pump with flow capabilities to 38 L/S and discharge heads to 64 metres.

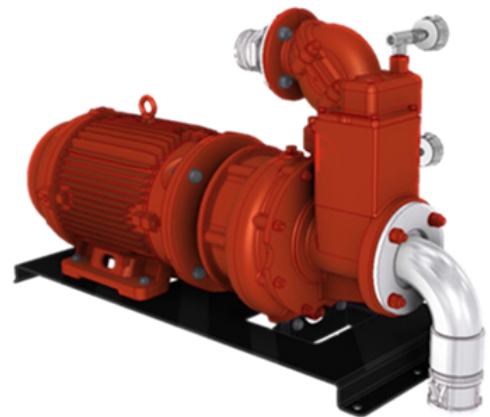
The NC80 RIG Pump features the unique N-Technology with its innovative self cleaning impellor. Godwin N-Pumps Deliver the highest total efficiency and reduces unplanned maintenance costs.

This makes it an extremely effective pump, suitable for dirty mine water applications including improved performance where shotcrete is utilised.



Features and Benefits

- Fully automatic priming from dry to 8.5 metres suction lift.
- Godwin Dri-Prime is a continuously operated Venturi air ejector priming device which requires no periodic adjustment or control.
- Dry-running high pressure oil bath mechanical seal, with high abrasion resistant silicon carbide faces.
- A Close-coupled centrifugal pump with Godwin Dri-Prime system mounted to an electric motor.
- Incorporates high efficiency N-Pump technology.
- Compact - dry/machine mounted.



Specifications

Max capacity	38 L/S
Max Head	64 metres
Impeller diameter	214 mm
Max operating temp	80 °C
Suction connection	3" camlock
Discharge connection	3" camlock
Motor	22 kW



Pump Construction

Housing	Cast iron
Impellor	Hard iron
Rear wear plate	Cast iron
Insert/front wear plate	Hard iron
Shaft	316 stainless
Non-return valve	Cast iron
Mechanical seal carbide	Silicon

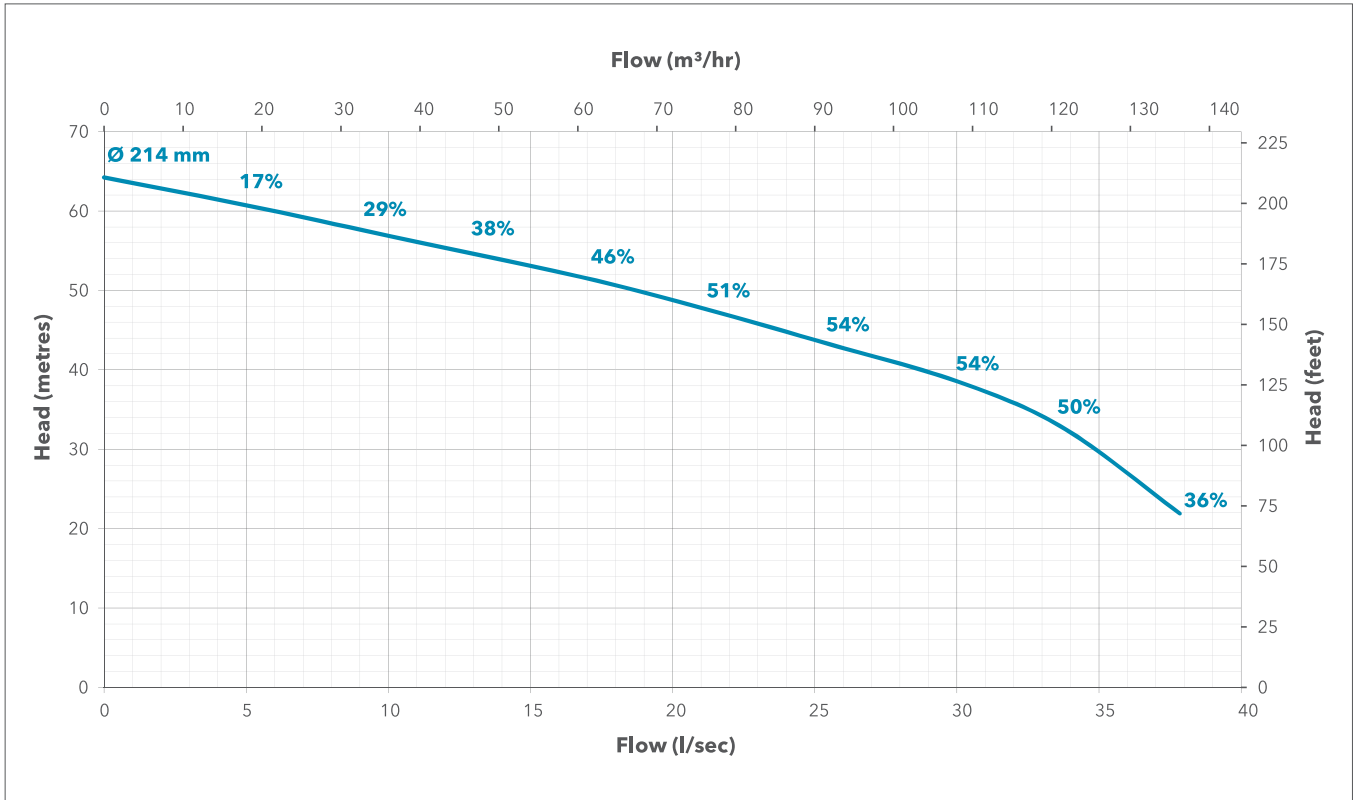
Alternate materials available upon request



Performance Curve

Pump Type	NC80
Curve No	95-1808-2098-2950
Branch Sizes	100 x 80 mm

Speed	2950 rpm
Impeller Diameter	214 mm



Installed in a Sandvik DD421 Jumbo

What can Xylem do for you?

We're 12,000 people unified in a common purpose: creating innovative solutions to meet our world's water needs. Developing new technologies that will improve the way water is used, conserved, and re-used in the future is central to our work. We move, treat, analyse, and return water to the environment, and we help people use water efficiently, in their homes, buildings, factories and farms. In more than 150 countries, we have strong, long-standing relationships with customers who know us for our powerful combination of leading product brands and applications expertise, backed by a legacy of innovation.

For more information on how Xylem can help you, go to www.xylemwatersolutions.com/au



Australia

131914

Adelaide | Brisbane | Darwin | Devonport | Kalgoorlie | Karratha | Mackay
Melbourne | Mt Isa | Newcastle | Orange | Perth | Sydney | Townsville

New Zealand

0800 331 914

Auckland | Christchurch | Wellington