



STORM 3

THE BROWSER-BASED DATA LOGGER

The **Storm 3** is a mid-range data logger with an ideal cost-to-performance ratio. Communicate through GOES satellite and cellular modems using a balanced set of inputs for analog, digital I/O and SDI-12 smart sensors. Easily configure and collect data using the browser-based graphical user interface with all standard web browsers on PCs, tablets and smart phones.

APPLICATIONS

Accurately monitor hydrological, meteorological, industrial control, storm and waste water.

KEY FEATURES

- GOES compatible
- Simple and intuitive browser-based Graphical User Interface (GUI)
- Direct connect or wireless (Wi-Fi) connection for the GUI interface
- Library-based sensor setup options
- Built-in help menus
- Two USB 2.0 compliant host ports (thumb drives and Wi-Fi adaptor)
- GSM and CDMA compatible
- One USB 2.0 compliant device port (communications)
- Low profile extruded aluminum case fits small spaces
- Wiring does not interfere with I/O labels
- Removable terminal strip connectors
- Power and Activity LEDs for visual indication of operation



Storm 3

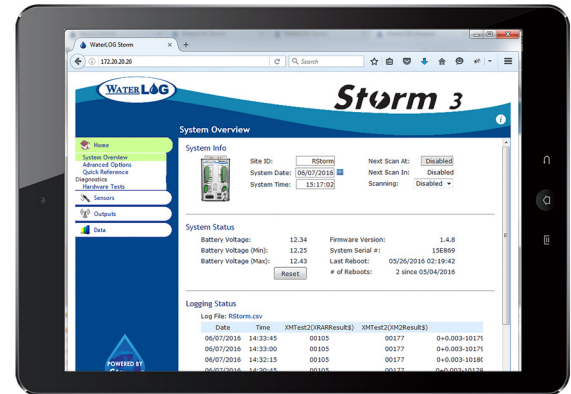


a xylem brand

SPECIFICATIONS

MEASUREMENTS		
Analog Inputs	Channels	4 single ended
	Accuracy	±0.025% FS
	Range	0.0 to 5.0 Volts (0.001 to 4.998V)
+5.0 Volt Excitation	Accuracy	±5.0 mV over load and temperature range
	Current	10 mA Max load
Switched +12.0 Volt Excitation	Type	Unregulated based on battery voltage
	Current	250 mA Max load, protected by resettable fuse
Digital I/O	Channels	4 general purpose digital I/Os
	Modes	Digital input Counter input Conditional output Counter frequency (100 Hz Max)
	Input Levels	0.0 to 5.0 Volts High = 3.5 Volts or higher Low = 0.08 Volts or less
	Output Levels	High = 3.5 Volts Min sourcing 5 mA Low = 0.4 Volts Max sinking 5 mA
SDI-12	Mode	SDI-12 master mode V1.3 compliant
	Connector	3-pin connector
RS-232	Type	Single RS-232 configured as a DTE device
	Connector	9-pin D connector, male
	Baud Rate	Programmable
RS-485	Type	Single RS-485 port
	Connector	4 position screw terminal
MEMORY		
General	Data Storage Capacity	256mB
COMMUNICATION		
USB	Type	2 host USB-A connectors 1 device Mini-B connector
	Version	USB version 2.0
Cell Modem (optional)	Type	GSM CDMA
Wi-Fi	Type	150 Mbps wireless 802.11b/g/n
External Satellite	Type	GOES/METEOSAT/INSAT H-2221-V2
POWER		
Requirements	Voltage Input	10.0 to 16.0 Volts reverse voltage protected
	Current	Standby: 3.5 mA Max Active: 50.0 mA Typical

	Current with Internal Modem	Standby: 4.5 mA Max Active: 100 mA Typical
Connection	Connector	2 position screw terminal
ENVIRONMENTAL		
General	Operating Temperature	-40 ° to +60 ° C
	Storage Temperature	-50 ° to +80 ° C
PHYSICAL		
Size	Housing	11.09 cm L x 6.22 cm W x 18.73 H (4.37 in. L x 2.45 in. W x 7.375 in. H)
Weight	Shipping	1 kg (2 lbs)
Material	Housing	Extruded aluminum
WARRANTY		
The Storm series of data loggers are warranted against defects in materials and workmanship for two years from the date of shipment. For complete terms and conditions, visit http://www.ysi.com/terms-and-conditions.php		
Note	For detailed specifications, see user manual. Specifications subject to change without prior notice due to on-going commitment to product testing and improvements. LR June 2016 (D15-10 0616)	



Storm 3 Graphical User Interface