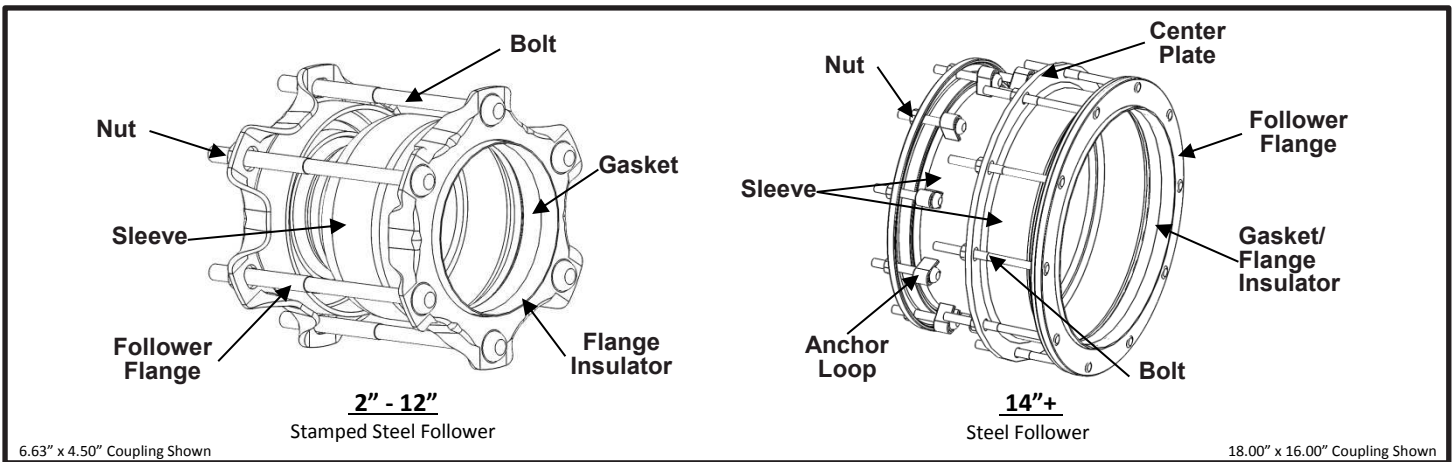


SPECIFICATION

E-SERIES SEAL-ONLY

IPS INSULATING REDUCING COUPLING



APPLICATIONS

- **Typical Uses**
 - Joining IPS x IPS plain end pipes of different outside diameter
 - For insulating connection applications
- **Standard Pipe Sizes**
 - 2" to 1-1/4" nominal and greater
- **Type of Pipe**
 - Steel x Steel
- **Pressure Rating**
 - Working Pressure: Up to 2" to 1-1/2" nominal pipe size(s) = 150 PSI
3" to 2" - 12" to 10" nominal pipe size(s) = 400 PSI
14"+ nominal pipe size(s) = 150 PSI
 - Test Pressure = (Working Pressure) x 2

MATERIALS

- **Follower Flanges**
 - Material: 1-1/4" - 12" nominal pipe size(s) = ASTM A569 Grade 1008/1010 HR, Carbon Steel
14"+ nominal pipe sizes(s) = ASTM A576 C1020 Carbon Steel
 - Flexi-Coat® fusion bonded epoxy
- **Sleeve**
 - Material: 1-1/4" - 12" nominal pipe size(s) = ASTM A513 Grade 1008/1010 HREW, Carbon Steel
14"+ nominal pipe size(s) = ASTM A283 Grade C, Carbon Steel
 - Standard Lengths: 7", 12"
 - Flexi-Coat® fusion bonded epoxy
- **Center Plate**
 - ASTM A36, Carbon Steel
 - Flexi-Coat® fusion bonded epoxy
- **Anchor Loops**
 - ASTM A36, Carbon Steel
 - Welded to sleeve to secure each follower end independently
 - Flexi-Coat® fusion bonded epoxy

SPECIFICATION

E-SERIES SEAL-ONLY

IPS INSULATING REDUCING COUPLING

- **Gaskets**
 - Material: 1-1/4" - 1-1/2" nominal pipe size(s) = Nitrile (Buna-N) ASTM-D2000 Rubber
2"+ nominal pipe size(s) = SBR ASTM-D2000 Rubber
 - Resistant to Natural Gas, Natural Gas Odorants, Carbon Dioxide, Water, UV, Ozone, and other chemicals
- **Bolts**
 - High Strength Low Alloy (HSLA) Steel
 - 5/8"-11UNC, Track-head, barbed for continuity
 - Rolled threads for improved physical characteristics, greater thread accuracy, and smooth surface finish
- **Nuts**
 - HSLA Steel
 - 5/8"-11UNC, X-Heavy Hex Semi-Finished
- **Flange Insulator**
 - Creates insulating barrier between pipe wall and inner diameter of flange
 - Size: 1/2" - 1-1/2" nominal pipe size(s) = Insulating skirt molded into gasket
2" - 8" nominal pipe size(s) = Nylon plastic insert
10"+ nominal pipe size(s) = Insulating skirt molded into gasket

REGULATIONS

- Marked in accordance with DOT CFR49-192.63(a)(2)

OPTIONS

- Stainless Steel hardware with fluoropolymer coated nuts
- Bare Sleeve I.D.
- Copper clad conductor for sacrificial anode or cathodic protection

NOTES

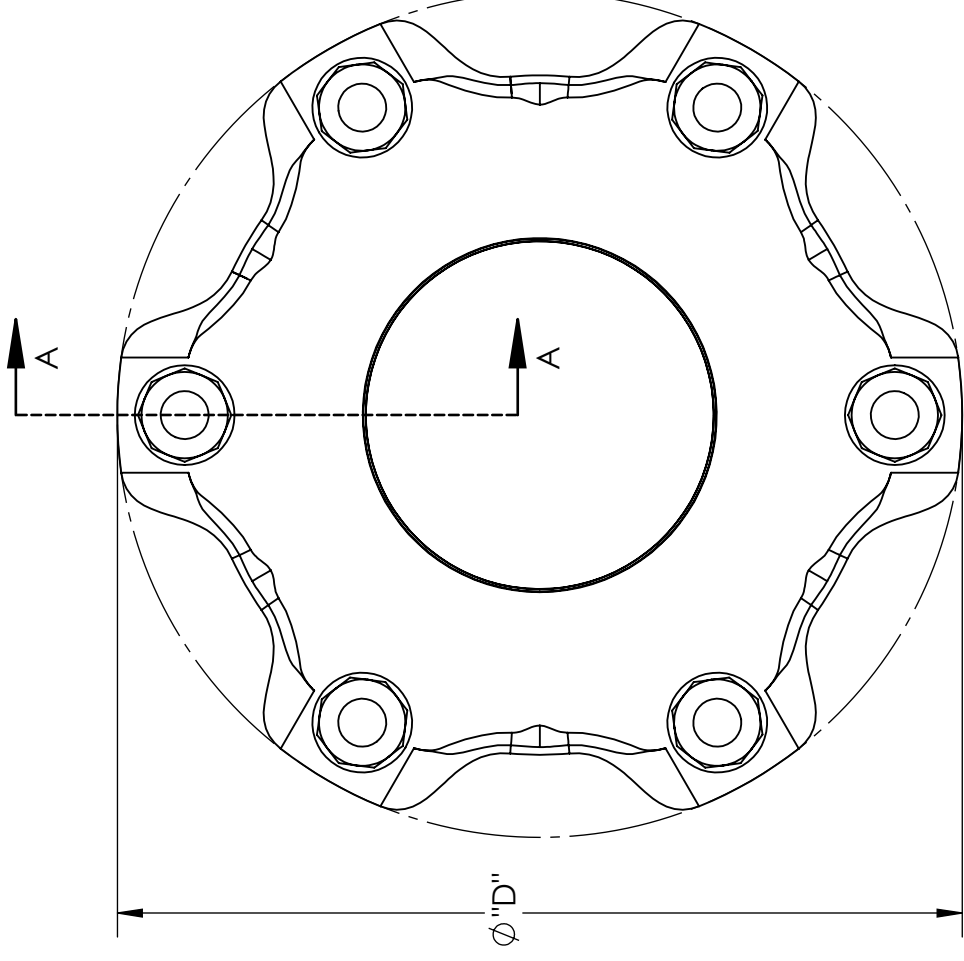
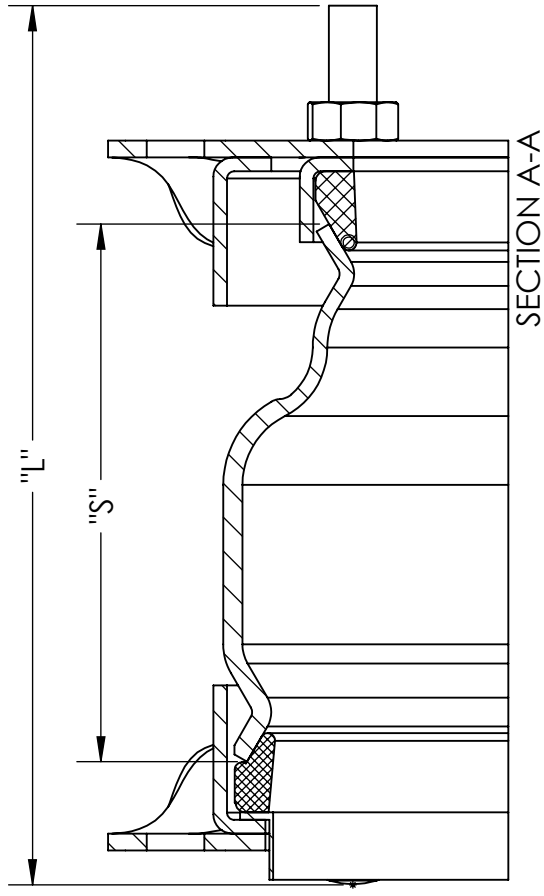
- Pipe end insulators and polypropylene boot also provided with couplings
- Additional specifications available for Cast Iron Reducing as well as IPS Straight and Conductive applications
- Flexi-Coat® is a registered trademark of Smith-Blair, Inc.
- These product specifications were correct at the time of publication and are subject to change without notice
- See the Smith-Blair website for part numbers and ordering information
- See the Smith-Blair website for warranty information
- See the Smith-Blair website for corrosion notice



WARNING THIS PRODUCT DOES NOT RESTRAIN PIPE MOVEMENT. Proper anchoring is required to prevent pipe pullout. Failure to anchor or improper anchoring can result in dangerous pipe content escape, property damage, serious injury, or death. Read the product installation instructions prior to installing this product.

30 Globe Ave, Texarkana, AR 71854
Ph: 870-773-5127 • Fax: 870-773-5212
Toll-Free Numbers: Ph: 800-643-9705 • Fax: 800-648-6792

2" to 1-1/4" THRU 12" to 10" STAMPED STEEL FOLLOWER

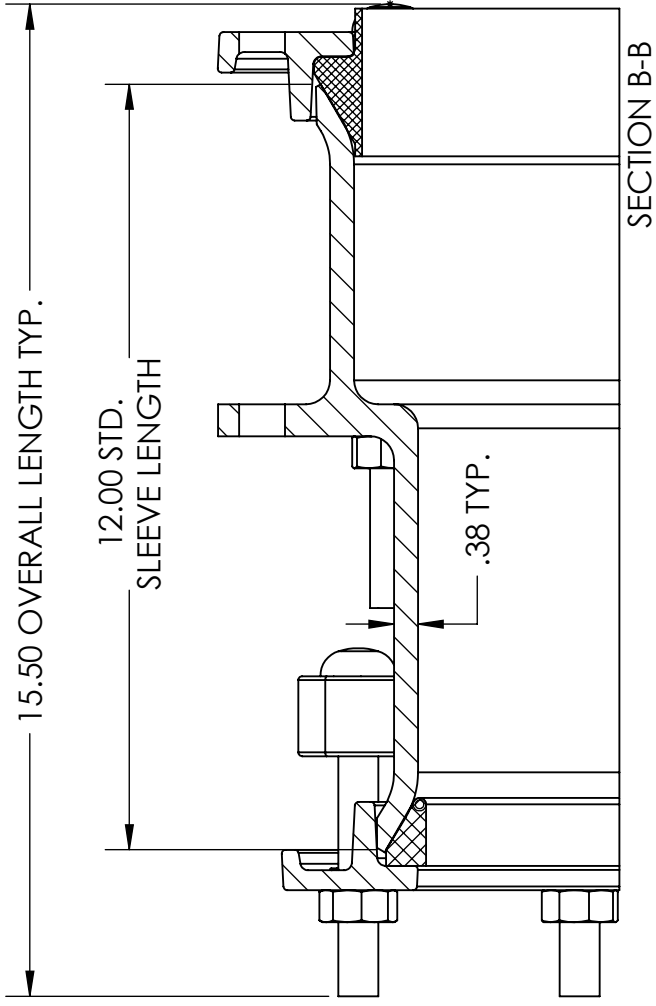
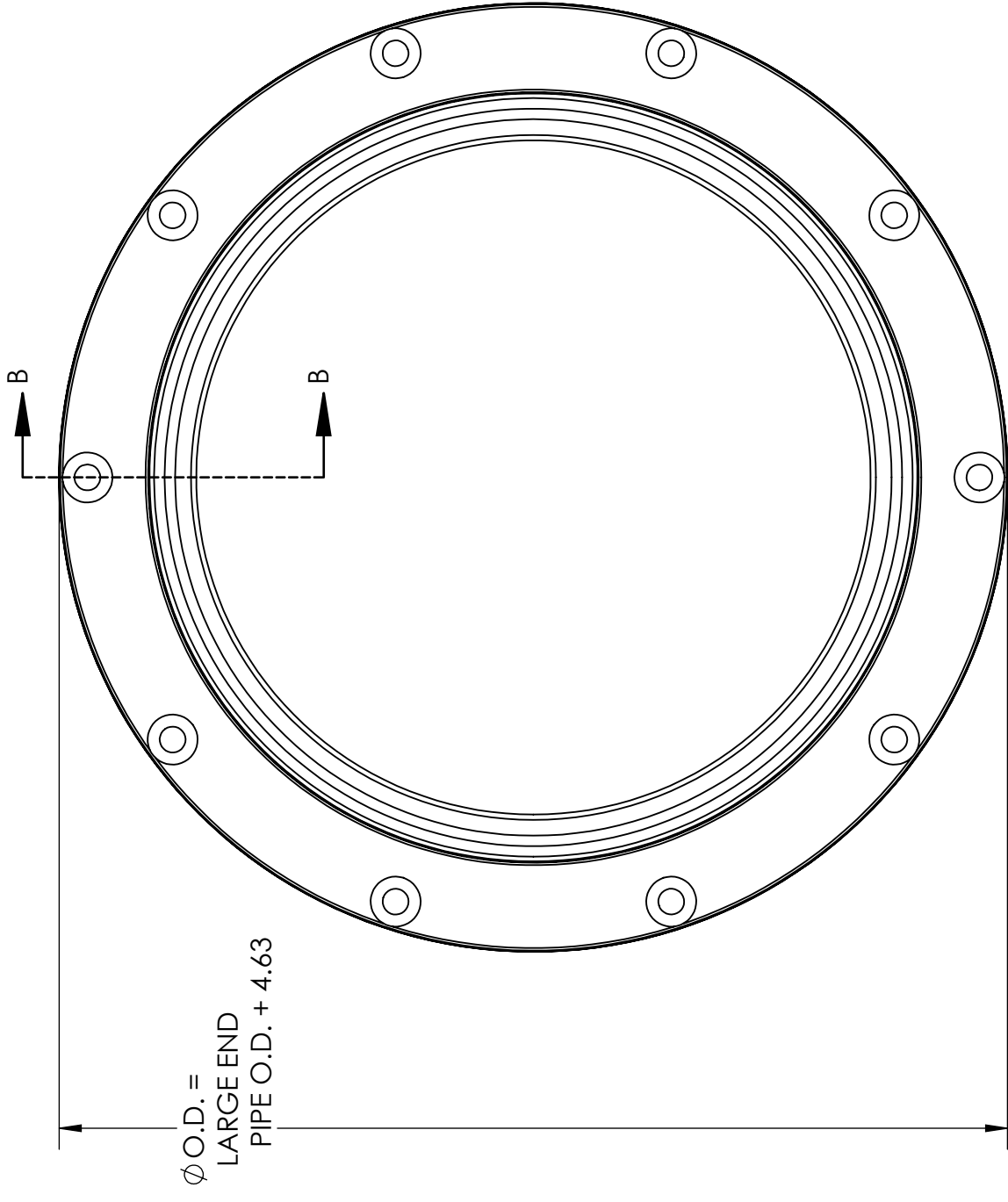


SEE CATALOG FOR ORDERING DETAILS
7" OR 10" SLEEVE, INSULATED X BONDED GASKET CONFIGURATION SHOWN
CONTACT SMITH-BLAIR FOR ADDITIONAL CONFIGURATIONS

PIPE SIZE	STD. SLEEVE LENGTH "S"	DIAMETER "D"	LENGTH "L"	BOLT QUANTITY	WEIGHT (LBS)
2.38 X 1.66	7.00	6.75	11.00	3	12
2.38 X 1.90	7.00	6.75	11.00	3	14
3.50 X 2.38	7.00	7.75	11.50	4	17
4.50 X 2.38	7.00	8.50	11.50	4	20
4.50 X 3.50	7.00	8.50	11.50	4	20
6.63 X 4.50	7.00	11.00	11.50	6	32
8.63 X 6.63	7.00	13.50	11.50	6	50
10.75 X 8.63	10.00	15.75	13.50	8	97
12.75 X 8.63	10.00	18.00	13.50	8	110
12.75 X 10.75	10.00	18.00	13.50	8	115

TOLERANCES U.N.O. XX= ±.03 XXX= ±.015 FRACTIONS= ±.015 ANGLES= ±1° MACH. FIN.	NOTES: REMOVE BURRS AND SHARP EDGES DO NOT SCALE DWG.	APP'D	DATE
SCALE: N/A	DRN	CK'D	DATE
ALL DIMENSIONS ARE IN INCHES.	SPW	DATE	9/29/16
TITLE			
SPECIFICATION			
Seal-Only E-Series Coupling IPS Reducing Insulating			
P/N		Various	
SMITH-BLAIR, Inc.		E IPS Red Ins.DRW	
TEXARKANA, ARKANSAS		11/14/16	
DWG. NO.		3 OF 4 SHEET	
REV.		REV.	

14"± STEEL FOLLOWER



SEE CATALOG FOR ORDERING DETAILS
 .38" X 12" SLEEVE CONFIGURATION SHOWN, OTHER CONFIGURATIONS AVAILABLE
 CONTACT SMITH-BLAIR FOR AVAILABLE SIZES AND PART NUMBERS

TOLERANCES U.N.O. XX= ±.03 XXX= ±.015 FRACTIONS= ANGLES=±1° MACH. FIN=	NOTES: REMOVE BURRS AND SHARP EDGES DO NOT SCALE DWG.	APPD	DATE
ALL DIMENSIONS ARE IN INCHES.	SCALE: N/A	CK'D	DATE
		DRN	DATE
		SPW	DATE
			9/29/16

TITLE

SPECIFICATION
 Seal-Only E-Series Coupling
 IPS Reducing Insulating

SMITH-BLAIR, Inc. TEXARKANA, ARKANSAS	P/N	Various
	DWG. NO.	E IPS Red Ins.DRW
	REV.	11/14/16
		4 OF 4 SHEET