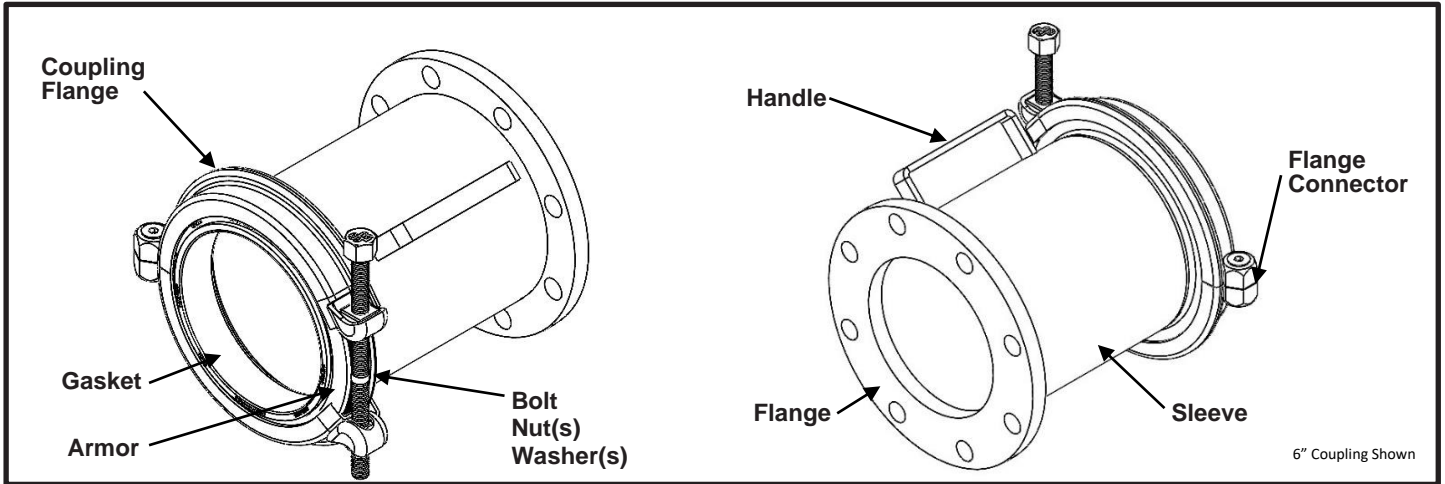




Smith-Blair
a xylem brand

SPECIFICATION

TOP BOLT® WIDE RANGE LONG SLEEVE FLANGE COUPLING ADAPTER MODEL 922



APPLICATIONS

- **Typical Uses**
 - Connects a wide variety of plain-end pipe to flanged fittings, meters, valves, or other flanged equipment.
- **Standard Pipe Sizes**
 - 2" to 12" nominal
- **Type of Pipe**
 - Carbon Steel, Stainless Steel, Ductile Iron, Asbestos Cement, PVC, Copper Tube, HDPE
(see notes for HDPE applications)
- **Working Pressure**
 - 2" to 12" - 175 psi

MATERIALS

- **Coupling Flange**
 - Carbon Steel per ASTM A283C, A285A or A36
 - Flexi-Coat® fusion bonded epoxy coating
 - Integral bolt head pocket for one wrench installation
 - Split flange design
- **Flange**
 - 2" – standard meter coupling flange Meets ANSI B16.5.
 - 3" thru 12" – AWWA C207 Class D ANSI 150 lb. drilling
 - Flexi-Coat® fusion bonded epoxy coating
- **Sleeve**
 - Carbon Steel per ASTM A283C, A285A, or A36
 - Flexi-Coat® fusion bonded epoxy coating



Smith-Blair
a xylem brand

SPECIFICATION

TOP BOLT® WIDE RANGE LONG SLEEVE FLANGE COUPLING ADAPTER MODEL 922

- **Gasket**
 - Nitrile (Buna-N) per ASTM D2000
 - Compounded to resist water, oil, acids, alkalis, most (aliphatic) hydrocarbon fluids, and many other chemicals
 - Temperature range: -20°F to +180°F
 - Bi-Directional removable inner gasket to accommodate wide range of pipe
 - Inner gasket can be reinstalled after removal
 - Allow for up to 4° of pipe deflection
- **Armor**
 - Hardened Type 304 Stainless Steel
 - Corrugated design helps reduce friction for better sliding action when tightening
- **Flange Connector Hardware**
 - Type 304 Stainless Steel
 - 1/2" – 13 UNC, Countersunk Allen Head
- **Standard Hardware Size(s): 2" – 4"**
 - **Bolt**
 - Type 304 Stainless Steel
 - Epoxy coated
 - 9/16" - 12 UNC, Swivel Head Bolt with Rolled Threads
 - **Swivel Washer**
 - Type 304 Stainless Steel
 - 9/16"
 - **Steel Washer**
 - Type 304 Stainless Steel
 - 9/16"
 - **Nylon Washer**
 - Nylon 6/6
 - 9/16"
 - **Nut**
 - Type 304 Stainless Steel or equivalent
 - 9/16" - 12 UNC
 - Fluoropolymer Coated
- **Double-Acting Hardware Size(s): 6" – 12"**
 - **Bolt**
 - Type 304 Stainless Steel
 - Anti-Gall Coating
 - 5/8" - 11 UNC Left and Right Hand Threaded Stud with Rolled Threads
 - Standard 5/8" Heavy Hex Cap Nut welded to stud
 - **Tapped Swivel Nuts**
 - Type 304 Stainless Steel or equivalent
 - Fluoropolymer Coated
 - (1) Left Hand tapped and (1) Right Hand Tapped



Smith-Blair
a xylem brand

SPECIFICATION

TOP BOLT® WIDE RANGE LONG SLEEVE FLANGE COUPLING ADAPTER MODEL 922

OPTIONS

- Anode connector available for cathodic protection
- Other Flange configurations available upon request
- Chloramine resistant EPDM gasket

LISTINGS/STANDARDS

- Certified to NSF/ANSI 61 and NSF/ANSI 372
- Meets applicable portions of AWWA C219
- Flexi-Coat® fusion bonded epoxy coating meets requirements of AWWA C213

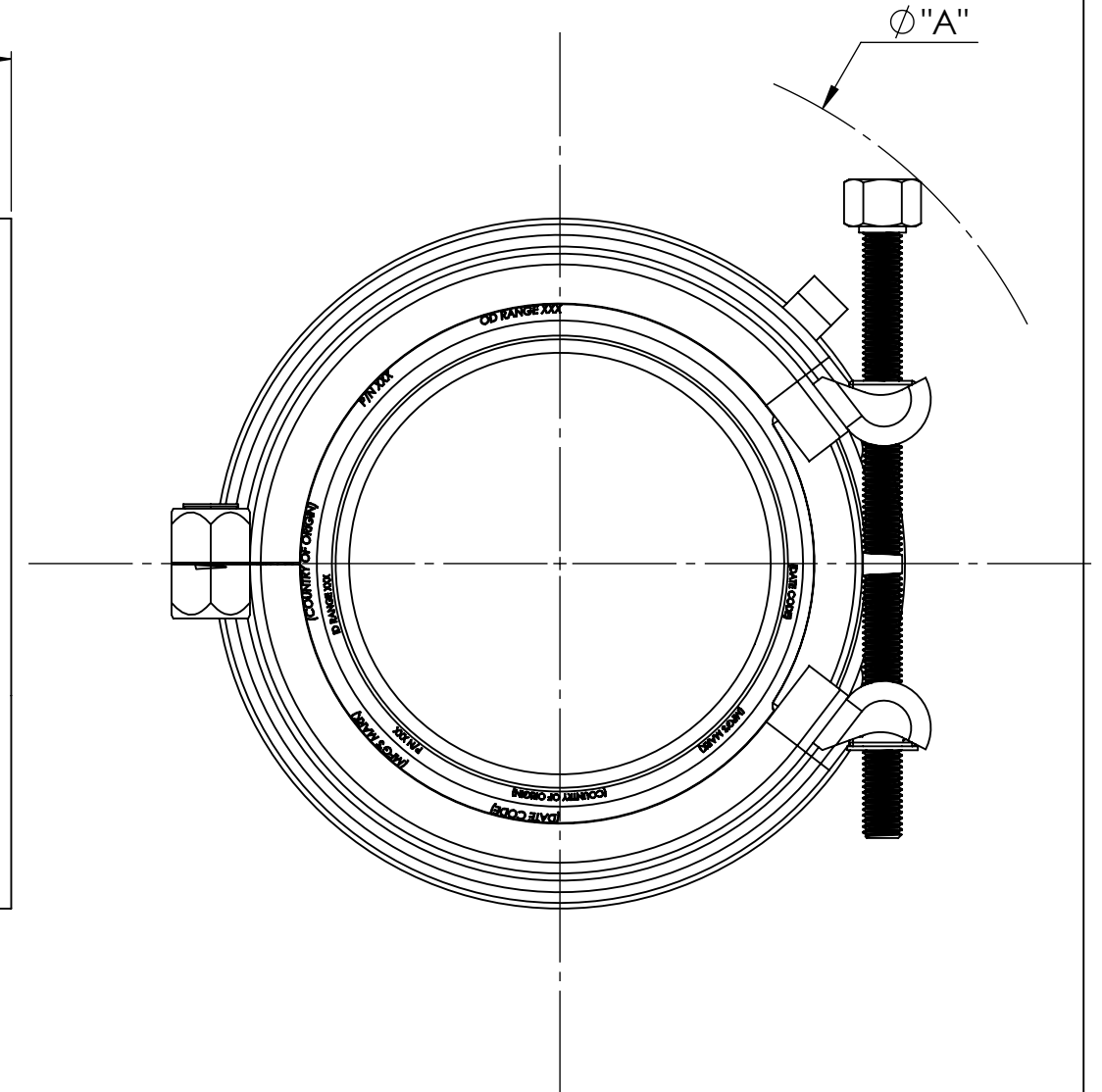
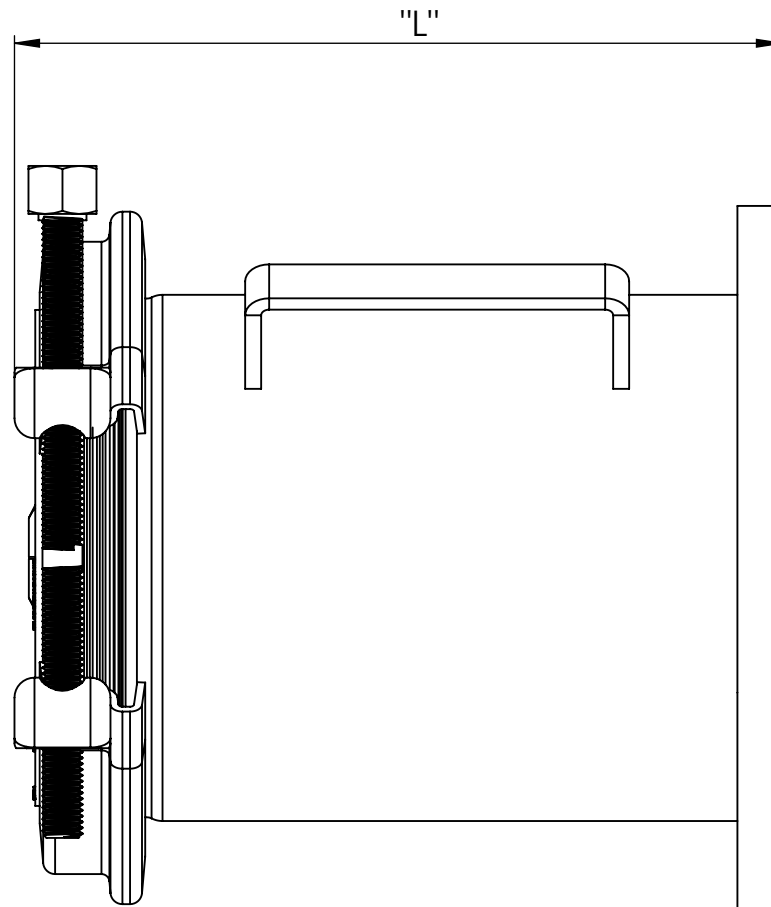
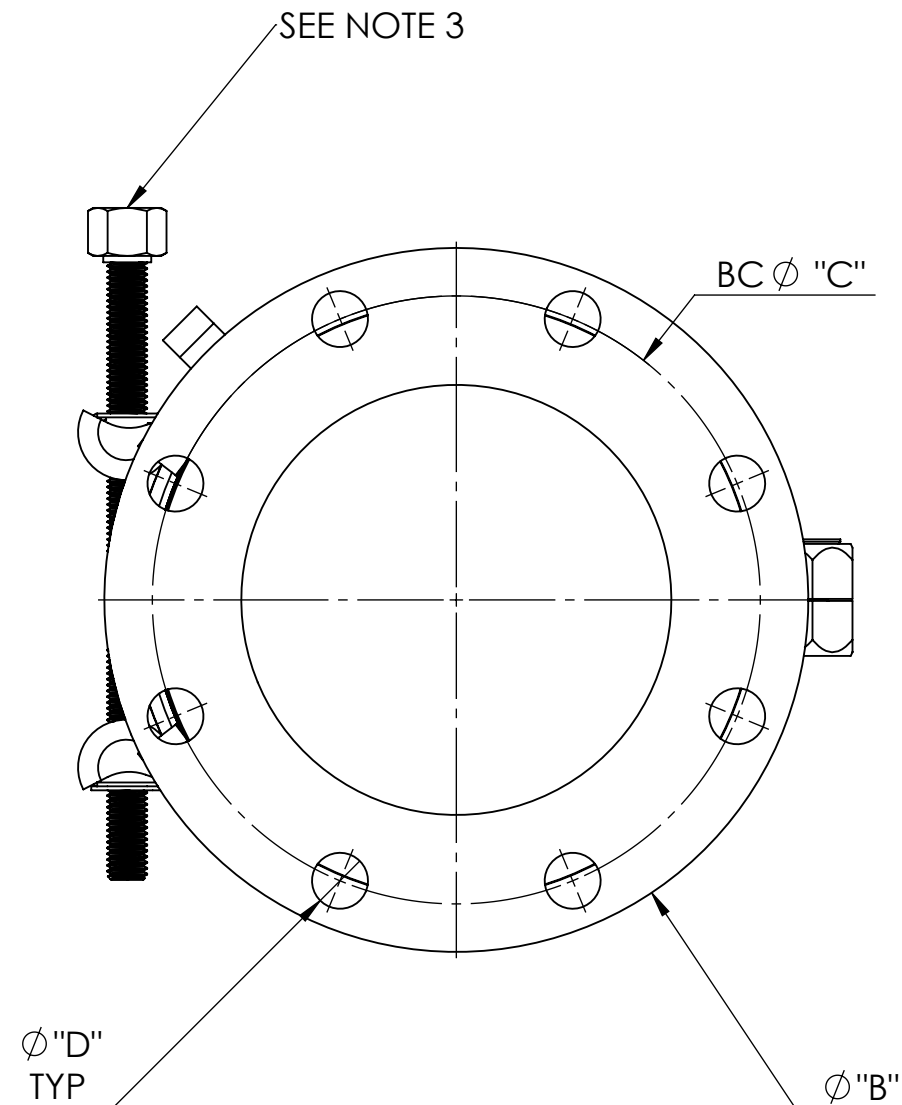
NOTES

- Pipe stiffeners **are required** when this product is used on HDPE
- Xylem, Smith-Blair, SB stylized, Flexi-Coat® and Top-Bolt® are registered trademarks of Xylem, Inc., or one of its subsidiaries.
- These product specifications were correct at the time of publication and are subject to change without notice
- See the Smith-Blair website for part numbers and ordering information
- See the Smith-Blair website for warranty information
- See the Smith-Blair website for corrosion notice



THIS PRODUCT DOES NOT RESTRAIN PIPE MOVEMENT. Proper anchoring is required to prevent pipe pullout. Failure to anchor or improper anchoring can result in dangerous pipe content escape, property damage, serious injury, or death. Read the product installation instructions prior to installing this product.

30 Globe Ave, Texarkana, AR 71854
Ph: 870-773-5127 • Fax: 870-773-5212
Toll-Free Numbers: Ph: 800-643-9705 • Fax: 800-648-6792



NOTES:

1. SEE CATALOG FOR PART NUMBERS AND RANGES.
2. 6" COUPLING SHOWN.
3. BOLT TYPE:
 - 2IN THRU 4IN - SINGLE ACTING BOLT
 - 6IN THRU 12IN - DOUBLE ACTING BOLT

NOMINAL SIZE (IN)	A (MAX)	B	C	D	L	FLANGE BOLT QTY.	BOXED WEIGHT (LBS)
2	10.13	6.00	4.50	.750	9.00	2	12
3	11.38	7.50	6.00	.750	9.00	4	18
4	12.75	9.00	7.50	.750	9.00	8	26
6	16.75	11.00	9.50	.875	12.00	8	34
8	19.00	13.50	11.75	.875	12.00	8	45
10	21.00	16.00	14.25	1.00	12.00	12	56
12	22.88	19.00	17.00	1.00	12.00	12	75

WRENCH SIZE CHART	
NUT/BOLT	SIZE
1/2"-13UNC ALLEN	5/16"
2"-4", 9/16"-12UNC	7/8"
6"-12", 5/8" HEAVY HEX	1 1/16"

TOLERANCES U.N.O. XX= ±.05 XXX= ±.010 ANGLES= ±1° MACH. FIN=v125 FRACTIONS=1/16 ALL DIMENSIONS ARE IN INCHES	NOTES U.N.O. REMOVE BURRS. REMOVE SHARP EDGES. DO NOT SCALE DWG.	APP'D	DATE
	TSK NO.	DRN	JCC
		DATE	12/18/23
TITLE SPECIFICATION			
TOP BOLT® LONG SLEEVE FLANGE COUPLING ADAPTER			
MODEL 922			
P/N		N/A	
DWG. NO. SPEC_922.DRW		1 OF 1 SHEET	12/18/23 REV.

Smith-Blair
a xylem brand