

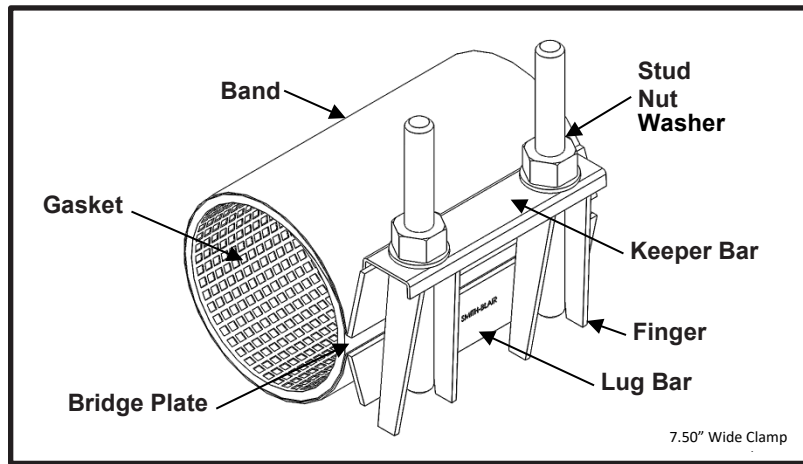


Smith-Blair
a xylem brand

SPECIFICATION

FULL CIRCLE® REPAIR CLAMP AII STAINLESS

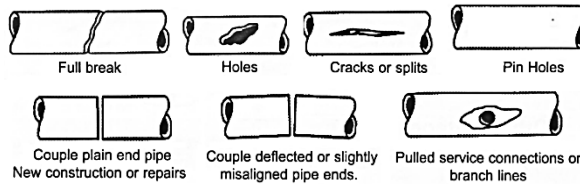
MODEL 261



APPLICATIONS

Typical Uses

- Repair leaks due to complete breaks, splits, or holes
- Joining pipes of the same diameter
- Examples:



Standard Pipe Sizes

- 2" to 12" nominal

Standard Widths

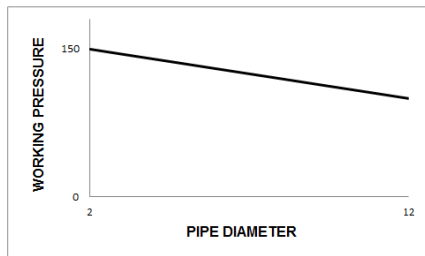
- 7.5", 10.0", 12.5", 15.0", 20.0", 25.0", 30.0"
- 4.50" diameter and smaller only available up to 15.0"

Type of Pipe

- Carbon Steel, Stainless Steel, Ductile Iron, PVC, HDPE DR17 or thicker (with use of spring washers), Asbestos Cement, Copper, Aluminum

Working Pressure

- Up to 150 psi depending on type of pipe, type of repair, pipe diameter, service conditions, and installation workmanship





Smith-Blair
a xylem brand

SPECIFICATION

FULL CIRCLE[®] REPAIR CLAMP AII STAINLESS

MODEL 261

MATERIALS

- **Band**
 - Type 304 Stainless Steel per ASTM A240
 - Band Thickness: 24 gauge thick for clamps 4.50" diameter and smaller
20 gauge thick for clamps 4.80" diameter and larger
- **Finger**
 - Type 304 Stainless Steel per ASTM A240
 - Finger Thickness: 10 gauge
 - Solution annealed for increased corrosion resistance and strength
 - Long fingers allow for up to 0.40 inches of range in clamp
- **Lug Bar**
 - Type 304 Stainless Steel per ASTM A240
 - Lug Bar Thickness: 10 gauge
 - Solution annealed for increased corrosion resistance and strength
 - Spans entire width of clamp for uniform distribution of clamping force
- **Keeper Bar**
 - Type 304 Stainless Steel per ASTM A240
 - Keeper Bar Thickness: 14 gauge
 - Solution annealed for increased corrosion resistance and strength
 - Helps pull clamp around the pipe and closes the clamp during installation
- **Gasket**
 - Nitrile (Buna-N) per ASTM D2000
 - Gasket Thickness: 0.192" thickness for clamps 4.50" diameter and smaller
0.218" thickness for clamps 4.80" diameter and larger
 - Certified to NSF/ANSI 61-G & 372
 - Compounded to resist water, oil, natural gas, acids, alkalies, most (aliphatic) hydrocarbon fluids, and many other chemicals
 - Temperature range: -20°F to +180°F
 - Full 360° gridded face gasket provides maximum pipe support, reinforcement, and sealing pressure
 - Tapered ends allow for full circumferential sealing
- **Bridge Plate**
 - Type 304 Stainless Steel quarter hard per ASTM A240
 - Molded and recessed into gasket
 - Preformed for uniform distribution of gasket pressure over the entire pipe circumference
- **Stud**
 - Type 304 Stainless Steel per ASTM A276
 - Epoxy coated threads to prevent galling
 - 5/8"-11UNC x 7.00" long, Stud
 - Rolled threads for improved physical characteristics, greater thread accuracy, and smooth surface finish
- **Nut**
 - Type 304 Stainless Steel GR. 8 per ASTM A194
 - Fluoropolymer coated to prevent galling
 - 5/8"-11UNC, Heavy Hex Semi-Finished
- **Washer**
 - Type 304 Stainless Steel per ASTM A240
 - 5/8" Type A Plain



Smith-Blair
a xylem brand

SPECIFICATION

FULL CIRCLE® REPAIR CLAMP ALL STAINLESS

MODEL 261

- **Welding**
 - Welds accomplished using qualified welders
 - GMAW & GTAW weld process utilized
 - Welds passivated to preserve corrosion resistance

LISTINGS

- Certified to NSF/ANSI 61-G & 372
- Meets applicable AWWA C230 standards

OPTIONS

- Type 316 Stainless Steel band
- Type 316 Stainless Steel hardware with fluoropolymer coated nuts to prevent galling
- Alternative gasket material (e.g. Viton, EPDM, etc.)
- Spring washers for use of clamp on HDPE pipe
- Offset gaskets to allow for repairing longer cracks using multiple clamps
- Conductivity feature

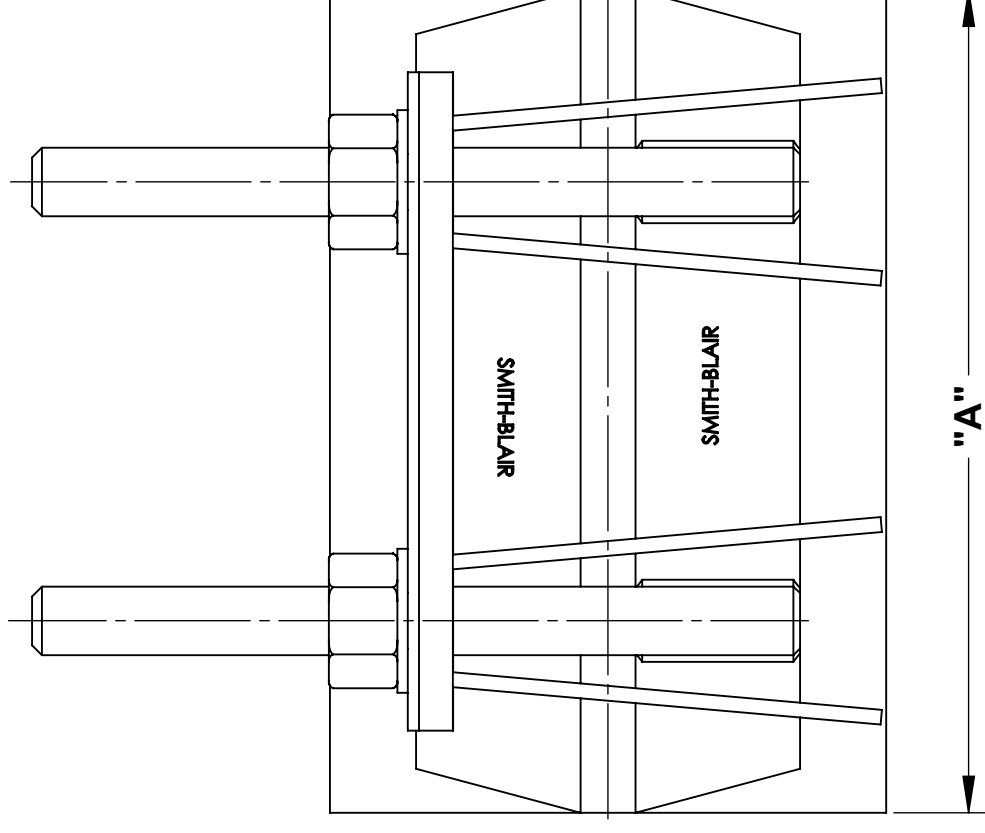
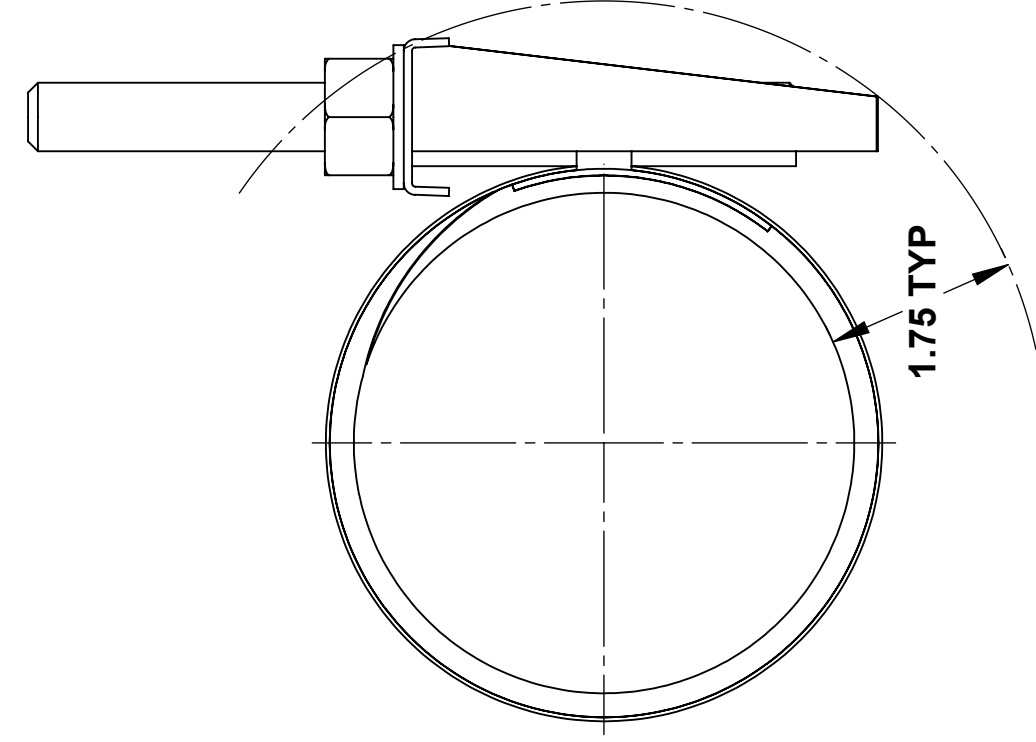
NOTES

- Spring washers **are required** when this product is used on DR17 or thicker HDPE pipe (Not recommended for use on HDPE pipe DR 17 or thinner)
- Pipe stiffeners **are required** when this product is used to join HDPE and thin wall PVC pipe
- Full Circle® is a registered trademark of Smith-Blair Inc.
- These product specifications were correct at the time of publication and are subject to change without notice
- See the Smith-Blair web site for part numbers and ordering information
- See the Smith-Blair web site for warranty information
- See the Smith-Blair web site for corrosion notice



THIS PRODUCT DOES NOT RESTRAIN PIPE MOVEMENT. Proper anchoring is required to prevent pipe pullout. Failure to anchor or improper anchoring can result in dangerous pipe content escape, property damage, serious injury, or death. Read the product installation instructions prior to installing this product.

30 Globe Ave, Texarkana, AR 71854
Ph: 870-773-5127 • Fax: 870-773-5212
Toll-Free Numbers: Ph: 800-643-9705 • Fax: 800-648-6792



NOTES:

1. SEE SMITH-BLAIR CATALOG FOR AVAILABLE PIPE DIAMETER AND WIDTH COMBINATIONS AS SOME COMBINATIONS ARE NOT AVAILABLE

2. 7.50" WIDE CLAMP SHOWN OTHER SIZES SIMILAR

CERTIFIED TO NSF/ANSI 61-G & 372

A	KEEPER BAR		HARDWARE			SOCKET SIZE
	QUANTITY	SIZE	QUANTITY	STUD SIZE	WASHER SIZE	
7.50	1	6.00	2	5/8" X 7.00"	5/8"	1-1/16"
10.00	1	8.00	3			
12.50	1	10.00	3			
15.00	2	6.00	4			
20.00	2	1X-6.00 1X-10.00	5			
25.00	2	1X-8.00 1X-14.00	8			
30.00	2	14.00	10			

TOLERANCES U.N.O.
XX= ±.03
XXX= ±.015
FRACTIONS= *
ANGLES= ±1°
MACH. FIN=

NOTES:
REMOVE BURRS
AND SHARP EDGES
DO NOT SCALE DWG.

APP'D
CK'D

DATE
DATE
DATE

SCALE: N/A

DRN
CHD
DATE

TITLE

SPECIFICATION
FULL CIRCLE® REPAIR CLAMP ALL STAINLESS
MODEL 261

P/N
SMITH-BLAIR, Inc.
TEXARKANA, ARKANSAS

N/A

SPEC_261.DRW
DWG. NO.

1 OF 1 SHEET
6/29/16 REV.