

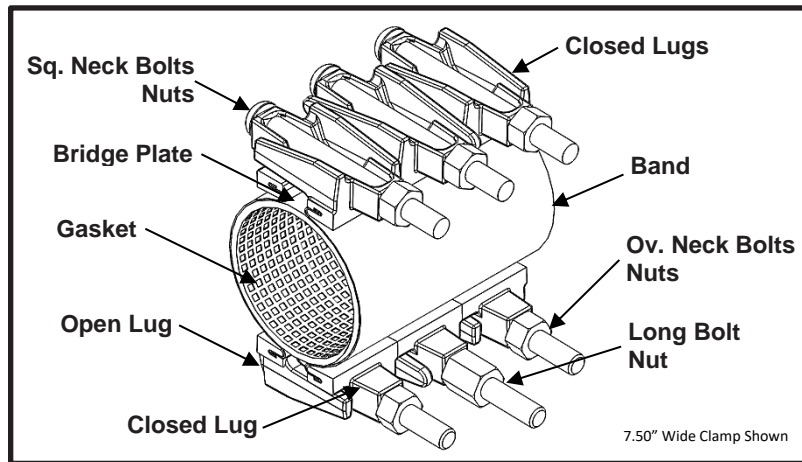


Smith-Blair
a xylem brand

SPECIFICATION

FULL CIRCLE[®] REPAIR CLAMP

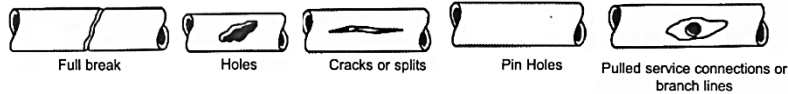
MODEL 225-2



APPLICATIONS

Typical Uses

- Repair leaks due to complete breaks, splits or holes
- Examples:



Standard Pipe Sizes

- 3" to 12" nominal

Standard Widths

- 7.5", 10.0", 12.5", 15.0", 20.0", 25.0", 30.0"

Type of Pipe

- Carbon Steel, Stainless Steel, Cast Iron

Working Pressure

- 125 psi

MATERIALS

Band

- Type 304 Stainless Steel per ASTM A240
- Band Thickness: 20 gauge thick for clamps 6.90" diameter and smaller
19 gauge thick for clamps 8.63" diameter and larger
- Hemmed ends for lug removal in tight applications



Smith-Blair
a xylem brand

SPECIFICATION

FULL CIRCLE[®] REPAIR CLAMP

MODEL 225-2

- **Lugs**
 - Cast using Ductile Iron 80-55-06 per ASTM A536
 - Flexi-Coat[®] fusion bonded epoxy finish
 - Slot cast in lug to capture band hem
 - Designed for drop in replaceable bolts
 - One open loop lug and one closed loop lug. The bolts do not have to be removed to install clamp preventing lost hardware
 - Remaining opening(s) have closed-closed loop lugs securing clamp sections together for ease of installation
 - Long interlocking fingers allow for up to 0.80 inches of range (0.40 inches per side) in clamp
 - Interchangeable lugs allow combining smaller diameter clamps to create larger diameter clamps
 - Mutually supporting sliding fingers assures proper bolt alignment and permits maximum clamping without bending bolts
- **Gasket**
 - Nitrile (Buna-N) per ASTM D2000
 - Gasket Thickness: 0.192 thickness for clamps 3.50" diameter and smaller
0.250 thickness for clamps 4.50" diameter and larger
 - Compounded to resist, oil, natural gas, acids, alkalis, most (aliphatic) hydrocarbon fluids and many other chemicals
 - Temperature range: -20°F to +180°F
 - Full 360° gridded face gasket provides maximum pipe support, reinforcement and sealing pressure
 - Tapered ends allow for full circumferential sealing
- **Bridge Plate**
 - Type 304 Stainless Steel quarter-hard per ASTM A240
 - Molded and recessed into gasket
 - Preformed for uniform distribution of gasket pressure over the entire pipe circumference
- **Bolts**
 - HSLA Steel per AWWA C111/A21.11
 - Size: 5/8"-11UNC x 6.00" long, Track Head Oval Neck (closed lug to open lug)
5/8"-11UNC x 6.88" long, Track Head Square Neck (closed lug to closed lug)
 - Fe/Zn coated per ASTM F1941-10
 - Rolled threads for improved physical characteristics, greater thread accuracy and smooth surface finish
 - Drop in replaceable bolts
- **Long Bolt**
 - HSLA Steel per AWWA C111/A21.11
 - 5/8"-11UNC x 6.88" long, Track Head Oval Neck (closed lug to open lug)
 - Fe/Zn coated per ASTM F1941-10
 - Rolled threads for improved physical characteristics, greater thread accuracy and smooth surface finish
 - Used on clamps 4.80" diameter and smaller to facilitate the initial clamp installation
 - Drop in replaceable bolts
- **Nuts**
 - HSLA Steel per AWWA C111/A21.11
 - 5/8"-11UNC, Heavy Hex Semi-Finished
 - Fe/Zn coated per ASTM F1941-10
- **Long Nut**
 - HSLA Steel per AWWA C111/A21.11
 - 5/8"-11UNC x 1.00" long, Heavy Hex Semi-Finished
 - Fe/Zn coated per ASTM F1941-10
 - Used to provide hand tightening during initial clamp installation



Smith-Blair
a xylem brand

SPECIFICATION

FULL CIRCLE® REPAIR CLAMP

MODEL 225-2

LISTINGS/STANDARDS

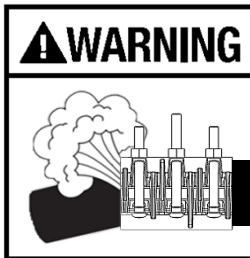
- Meets applicable D.O.T. Title 49 Section 192 regulations
- Flexi-Coat® Fusion-Bonded Epoxy Coating meets requirements of AWWA C213

OPTIONS

- Type 316 Stainless Steel band
- Type 304 Stainless Steel hardware with fluoropolymer coated nuts to prevent galling
- Type 316 Stainless Steel hardware with fluoropolymer coated nuts to prevent galling
- Offset gaskets to allow for repairing longer cracks using multiple clamps
- Conductivity feature

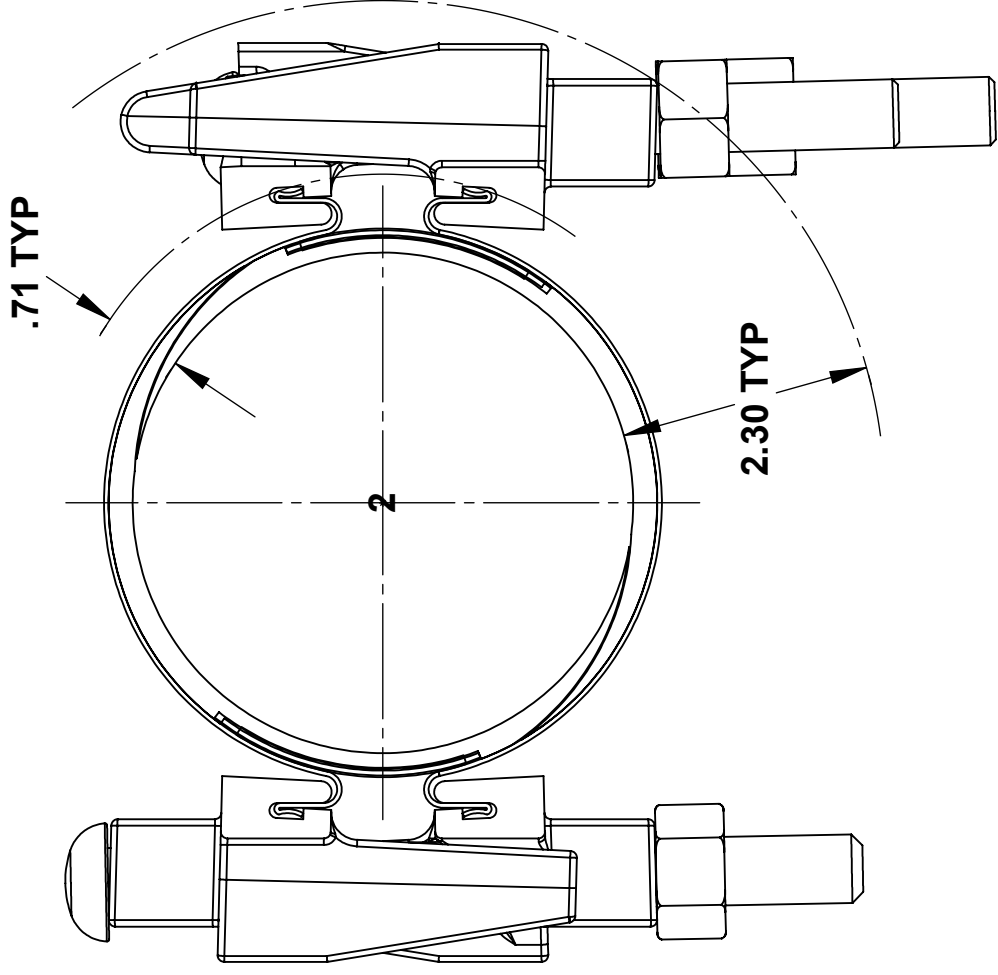
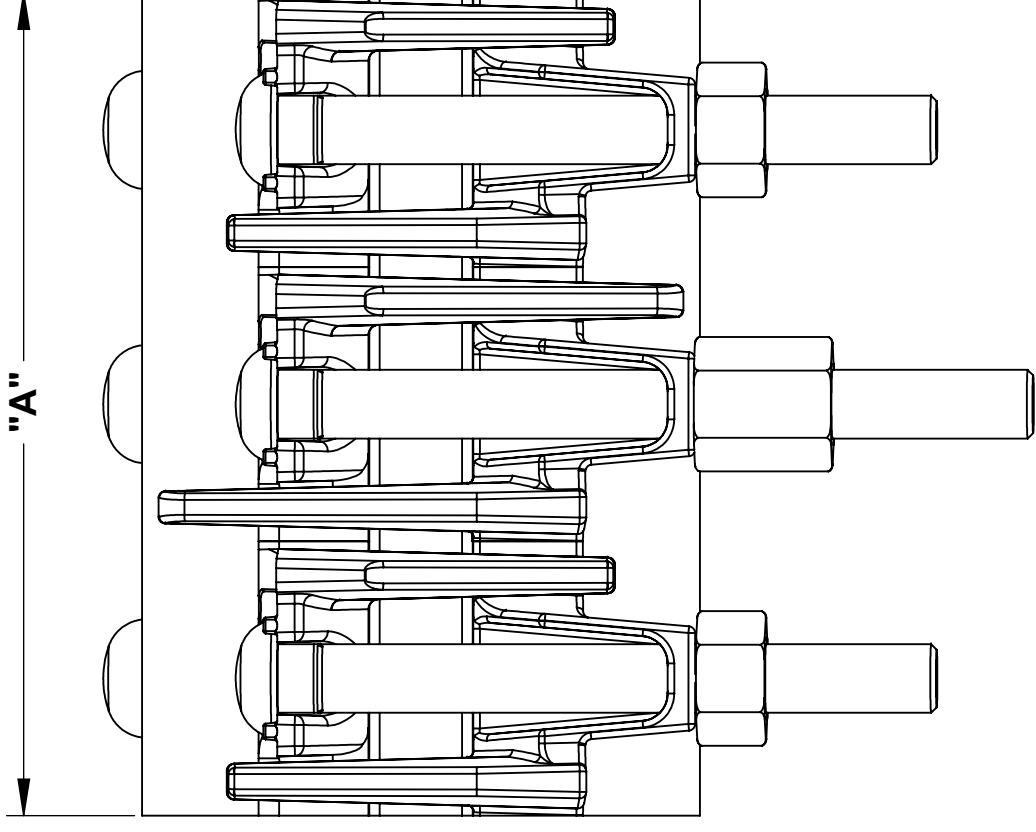
NOTES

- Full Circle® is a registered trademark of Smith-Blair
- These product specifications were correct at the time of publication and are subject to change without notice
- See the Smith-Blair web site for part numbers and ordering information
- See the Smith-Blair web site for warranty information
- See the Smith-Blair web site for corrosion notice



THIS PRODUCT DOES NOT RESTRAIN PIPE MOVEMENT. Proper anchoring is required to prevent pipe pull out. Failure to anchor or improper anchoring can result in dangerous pipe content escape, property damage, serious injury, and/or death. Read the product installation instructions prior to installing this product.

30 Globe Ave, Texarkana, AR 71854
Ph: 870-773-5127 • Fax: 870-773-5212
Toll-Free Numbers: Ph: 800-643-9705 • Fax: 800-648-6792



NOTES:

1. LONG OVAL NECK BOLTS ONLY PROVIDED ON CLAMPS 4.50" DIAMETER AND SMALLER
2. SEE SMITH-BLAIR CATALOG FOR AVAILABLE PIPE DIAMETER AND WIDTH COMBINATIONS AS SOME COMBINATIONS ARE NOT AVAILABLE
3. 7.50" WIDE CLAMP SHOWN OTHER SIZES SIMILAR.

A	BOLT QUANTITY					LONG NUT QUANTITY	SOCKET SIZE
	OVAL NECK		SQUARE NECK	TOTAL			
	SHORT	LONG					
7.50	2	1	3	6	1	1-1/16"	
10.00	2	2	4	8	2		
12.50	3	2	5	10	2		
15.00	4	2	6	12	2		
20.00	5	3	8	16	3		
30.00	8	4	12	24	4		

TOLERANCES U.N.O. XX= ±.03 XXX= ±.015 FRACTIONS= 1/16 ANGLES= ±1° MACH. FIN=	NOTES: REMOVE BURRS AND SHARP EDGES DO NOT SCALE DWG.	APP'D	DATE
SCALE: N/A	DRN	CHD	DATE
TITLE			6/10/15
SPECIFICATION			
FULL CIRCLE® REPAIR CLAMP			
MODEL 225-2			
P/N		N/A	
DWG. NO.		SPEC_225-2.DRW	
REV.		1 OF 1 SHEET	
6/28/16			

