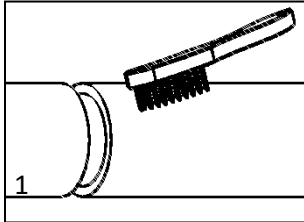




Smith-Blair
a xylem brand

Installation Instructions
Class I – EZ IPS Straight Conductive
Class II – EZ IPS Reducing Conductive
Maxi-Grip® EZ Coupling

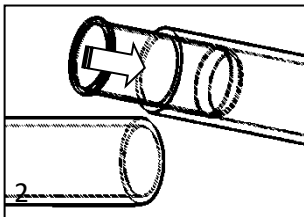
FOR JOINING IPS STEEL AND PLASTIC PIPE IN ANY COMBINATION



Step 1

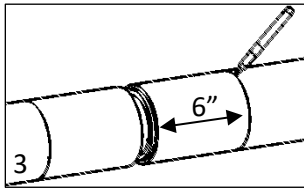
Clean pipe ends at least 6" back from end, removing dirt, rust, oil, and scale. Pipe ends must be cut square (straight) and be free of longitudinal grooves.

Leave a gap 1" to 2" wide between pipe ends.



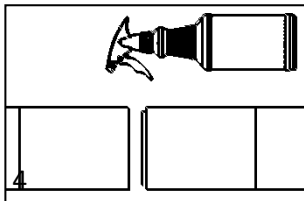
Step 2

When joining non-metallic pipe, insert a properly sized metallic stiffener into non-metallic pipe end(s). The stiffener must be at least 7" long and be marked with the same SDR as the pipe.



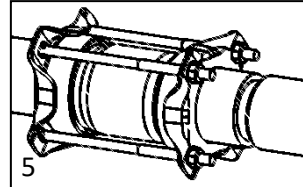
Step 3

Mark each pipe 6" back from end.



Step 4

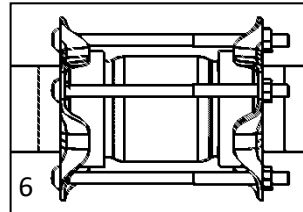
Lubricate pipes and coupling gaskets using a suitable lubricant.



Step 5

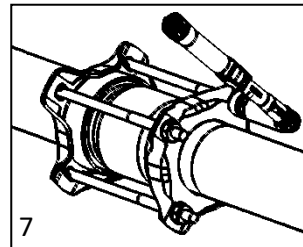
Loosen nuts and gently pull coupling entirely onto one pipe (if reducing, pull onto smaller pipe). If coupling does not stab easily onto pipe, see other side of these instructions.

Maximum pipe deflection should **not** exceed 2° at each pipe end.



Step 6

Back coupling over second pipe and center between marks on pipe.



Step 7

Torque nuts fully and evenly, in uniform increments, in a diametric pattern for all sizes to:

TORQUE

100 ft-lbs. Minimum
110 ft-lbs. Maximum

Pressure Ratings

PE to PE	125 PSI
PE to Steel	125 PSI
Steel to Steel	300 PSI

Class I – EZ IPS Straight Conductive

Pipe Diameter		Catalog Part Number	Category 1 ASTM F1948-19 DOT CFR 49-192.281(e)	
Nominal	Actual		PE 2406/2708	PE 3408/4710
2	2.38	EZ28B7UMG	11	9
3	3.50	EZ38B7UMG	11	9
4	4.50	EZ48B7UMG	11.5	9
6	6.63	EZ68D7UMG	11.5	11
8	8.63	EZ88B7UMG	11	11
12	12.75	EZ1208D10UMG	13.5	11

Class II – EZ IPS Reducing Conductive

Pipe Diameter		Catalog Part Number	Category 1 ASTM F1948-19 DOT CFR 49-192.281(e)	
Nominal	Actual		PE 2406/2708	PE 3408/4710
3 x 2	3.50 x 2.38	EZ328B7UMG	11	9
4 x 2	4.50 x 2.38	EZ428B7UMG	11	9
4 x 3	4.50 x 3.50	EZ438B7UMG	11	9
6 x 4	6.63 x 4.50	EZ648D7UMG	11	11
8 x 6	8.63 x 6.63	EZ868D7UMG	11	11
12 x 8	12.75 x 8.63	EZ1288D12UMG	13.5	11

For other SDR configurations, please contact Smith-Blair

Additional size configurations available upon request



Smith-Blair
a xylem brand

Installation Instructions

Class I – EZ IPS Straight Conductive

Class II – EZ IPS Reducing Conductive

Maxi-Grip® EZ Coupling

DISASSEMBLY INSTRUCTIONS

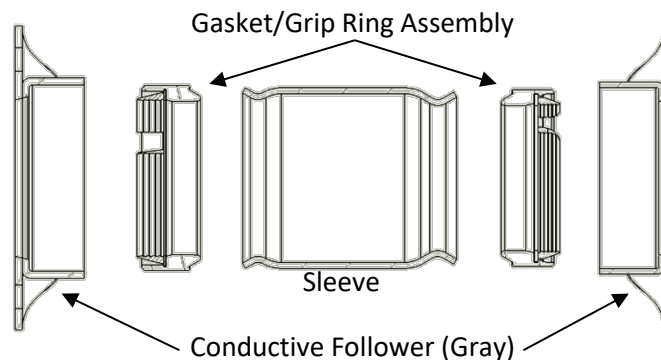
Most installations should not require disassembly of the Maxi-Grip® EZ coupling. If a coupling does not stab, loosen the nuts and then gently attempt to pull the coupling onto the pipe while supporting it under the sleeve. If the coupling must be disassembled for installation (such as in tight spaces or on out-of-round pipe), observe the following guidelines.

- 1) Prepare pipes as per instructions 1 thru 4 on front of the page.
- 2) Place coupling on a stable surface.
- 3) Remove nuts (and bolts) from coupling, but keep all components within each follower.
- 4) Slide each follower (with internal components) onto its

respective pipe.

- 5) Center sleeve between marks on pipes.
- 6) Bring each follower back against sleeve. Be sure to keep components evenly aligned with pipe.
- 7) Replace bolts and nuts and tighten fully as specified on front of page.

In extreme cases it may be necessary to slide component parts individually onto each pipe. In this case, slide the parts onto each pipe as indicated below.



IMPROPER INSTALLATION CAN RESULT IN PRODUCT FAILURE.
Failure to follow proper installation procedures can result in dangerous pipe content escape, property damage, serious injury, and/or death. Read the product installation instructions prior to installing this product.

WARRANTY

Smith-Blair, Inc. warrants its products to be free of defects in materials and workmanship for a period of one (1) year from the date of shipment by Smith-Blair, Inc. (the "Warranty Period"). Dated proof of purchase, such as a bill of sale, is required to establish warranty eligibility. If a product fails to perform due to a defect in materials or workmanship during the Warranty Period, Smith-Blair, Inc. will repair or, at Smith Blair, Inc.'s option, replace the product with the same or comparable item. In the event that the product cannot be repaired and a suitable replacement item is not available, Smith-Blair, Inc. will refund the original purchase price shown on the proof of purchase. In all cases, the customer is responsible for returning the allegedly defective product to the factory or warehouse designated by Smith-Blair, Inc.

THIS LIMITED WARRANTY IS EXCLUSIVE AND IS IN LIEU OF ANY EXPRESS OR IMPLIED WARRANTY OF MERCHANTABILITY, FITNESS FOR A PARTICULAR PURPOSE, OR OTHER WARRANTY OF QUALITY, OR THOSE ARISING FROM A COURSE OF DEALING, CUSTOM, OR USAGE OF TRADE. THE REMEDIES PROVIDED IN THIS LIMITED WARRANTY STATEMENT ARE THE CUSTOMER'S SOLE AND EXCLUSIVE REMEDIES. IN NO EVENT SHALL SMITH-BLAIR, INC. BE LIABLE FOR DIRECT, INDIRECT, SPECIAL, INCIDENTAL, OR CONSEQUENTIAL DAMAGES, WHETHER BASED ON CONTRACT, TORT, OR ANY OTHER LEGAL THEORY, AND WHETHER ADVISED OF THE POSSIBILITY OF SUCH DAMAGES.

04/18

CORROSION & PRODUCT SELECTION NOTICE

Metal products are subject to corrosion, particularly when used outdoors and/or underground. A large number of factors and local conditions affect the rate of corrosion. Consult a local corrosion expert to determine the life expectancy of this product when used with your pipeline content, soil, and environment. Also, consult your system designer to determine the suitability of this product in your piping system. Failure to determine the suitability of this product in your application, soil, and/or environment can result in premature product failure. Smith-Blair will provide additional information about this product's material specifications at your request. You may also obtain product information at www.smith-blair.com.

04/18