

Venturi Flume

3.83

ISO 4359 COMPLIANT

General

Venturi flumes are designed in accordance with ISO 4359.

They are commonly used in Europe, intended for measurement of volumetric flow rates in rectangular channels with gravity flow.

MJK Venturi flumes are, as standard, supplied as short-throated Khafagi type. Large sizes up to 2500 m³/h can be made upon request. Large flumes are also available as wings sections.

The ultrasonic sensor measures the actual liquid level.

For prefabricated flumes, an extended bracket for ultrasonic sensors is available. The sensor bracket is made of stainless steel. In places, where it is not possible to use the extended sensor bracket, the standard MJK bracket for ultrasonic sensors can be used.

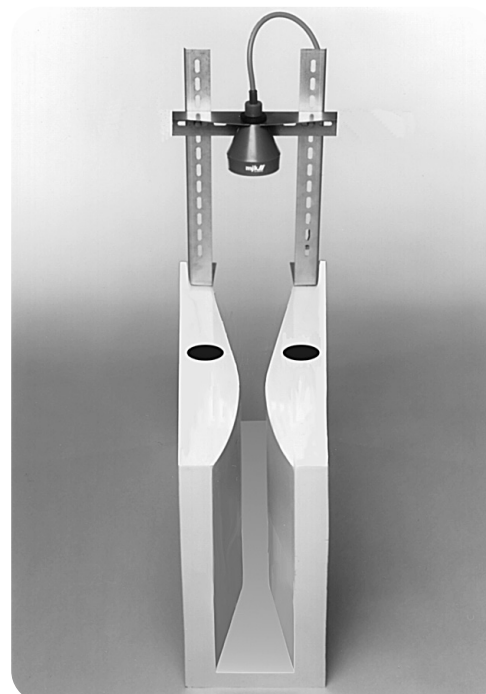
Sensor must be installed 3 to 4 x H_{max} before inlet (L, see illustration on back).

Features

- Easy to build in.
- Prepared for molding with air holes and concrete anchors.
- Flat bottom (therefore suitable for building into existing rectangular channels).
- Three standard sizes cover ranges from 3.5 m³/h to 450 m³/h.
- Made of stainless steel 304.

Applications

- Inlet wastewater for treatment plants.
- Final effluent water from treatment plants.
- Storm flow.
- Industrial wastewater.



DATASHEET

EN 3.83 VENTURI FLUME DATASHEET 2008

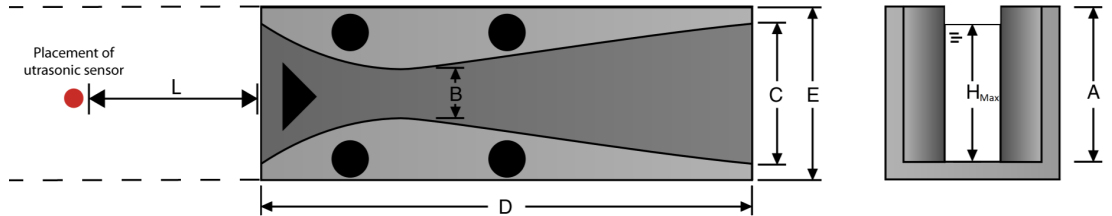
mjk
a xylem brand

Venturi Flume

Specifications

Venturi flume	
Material	Steel 304
pH range	3-12 pH
Temperatur range	-20...+60° C; for short periods up to 90° C

Dimensions



Accessories



Order numbers

Order number	Item name	Size [inch]	Q min-max [m ³ /h]	H max [mm]	A [mm]	B [mm]	C [mm]	D [mm]	E [mm]	L [mm]	Weight kg
170050	5 inch flume, 3.5-35 m ³ /h	5"	3.5-35	125	150	120	300	1050	400	375-500	18,6
170052	5 inch flume, 3.5-120 m ³ /h	5"	3.5-120	273	300	120	300	1050	400	819-1092	28,5
170063	6 inch flume, 10-50 m ³ /h	6"	10-150	267	300	160	400	1400	500	801-1068	38,9
170072	8 inch flume, 15-200 m ³ /h	8"	15-200	281	320	200	500	1750	600	843-1124	54,0
170076	8 inch flume, 15-450 m ³ /h	8"	15-450	467	520	200	500	1750	600	1401-1868	76,0

Order numbers

Accessories

Order number	Item name
200219	Sensor bracket, short 120 mm
200220	Sensor bracket, standard, 325 mm
200230	Sensor bracket for flume max. width 550 mm / 21.6"
200235	Sensor bracket for flume max. width 950 mm / 37.4"