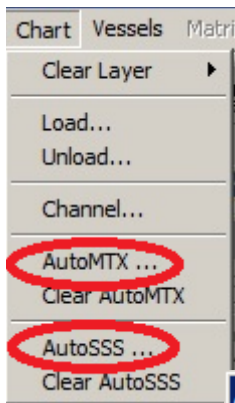




## Real-time Side Scan Mosaic with Automatic Matrix in HYPACK® SURVEY and HYSWEEP® SURVEY

By Lazar Pevac

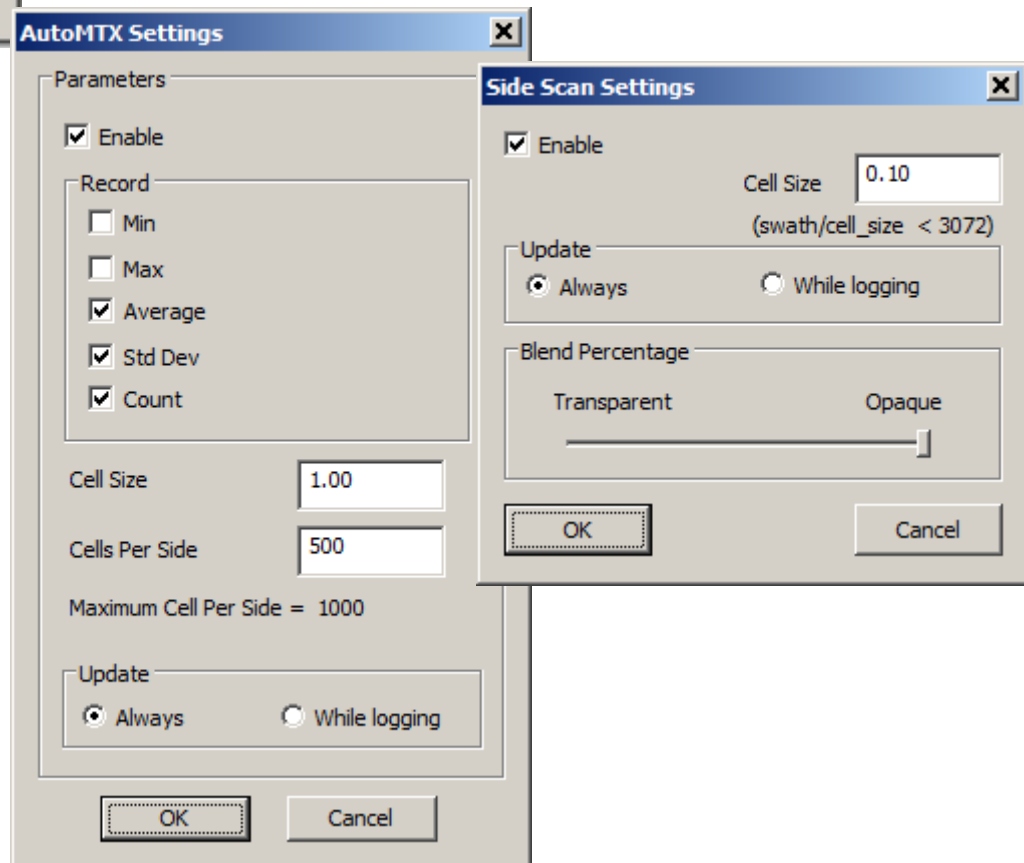


A lot of multibeam devices are now capable of exporting side scan data simultaneously with multibeam data. We decided to change HYPACK® SURVEY to meet this challenge.

If you run HYPACK® SURVEY and HYSWEEP® SURVEY, you will see a few new items in the Chart menu:

There are two menu items that allow you to invoke dialogs for initial setup and two useful menu items that give you a quick way to erase data.

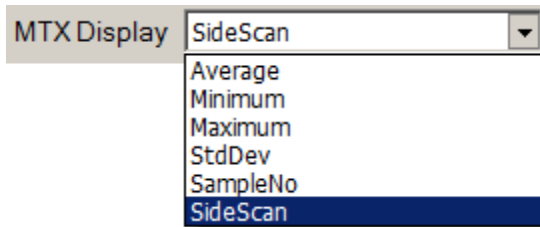
**FIGURE 1.** AutoMTX for Automatrix Options (left) and AutoSSS for Real-time Mosaic options (right)



The first step is to configure HYSWEEP® HARDWARE to export side scan and multibeam data. HYPACK® SURVEY does not need any hardware setup unless you have additional devices attached to the vessel.

When you start both programs, you should open the setup dialogs and set the parameters. The programs will save the settings and you do not need to do it again.

Each Map window has a drop-down box that allows you to select data that will be displayed in this specific window.



**FIGURE 2.** Two Maps with Different Selections Running Simulated Data.: Side Scan (top) and Multibeam (bottom)

