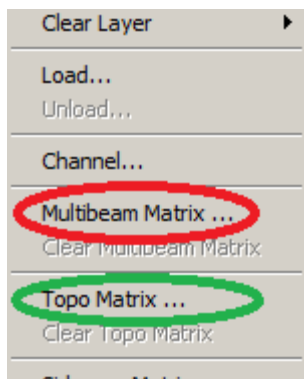




Real-time Multibeam and Laser Automatic Matrix with HYPACK® SURVEY and HYSWEEP® SURVEY

by Lazar Pevac

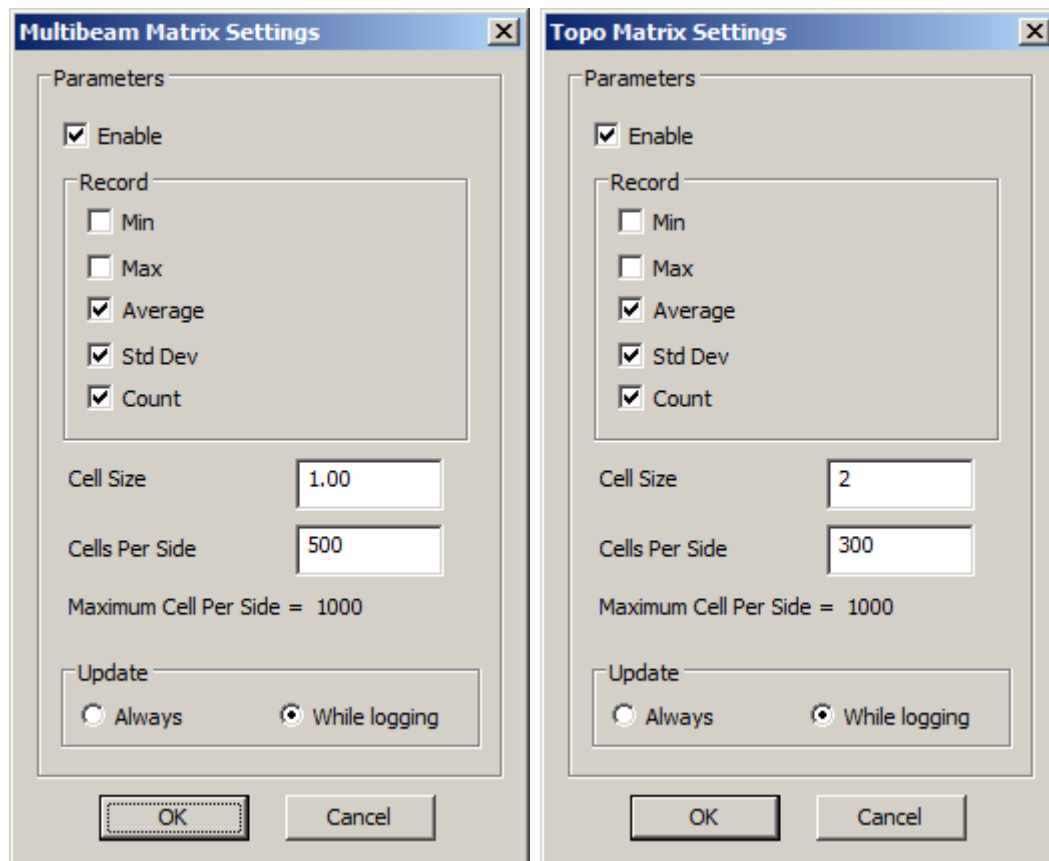


HYSWEEP® SURVEY allows you to log from multibeam and laser devices simultaneously. HYPACK® SURVEY is already capable of processing multibeam data to save it in the matrix format.

We have now decided to modify HYPACK® SURVEY to save multibeam and laser data, at the same time, in separate matrices.

You will notice that we have a couple of new menu items in the Chart menu: Multibeam Matrix and Topo Matrix. They open almost identical setup dialogs that allow you to set matrix parameters for each data type. Generally, the parameters will be different.

FIGURE 1. Setting Multibeam (left) and Topographic (right) Matrix Parameters



You can monitor both matrices in the Map window, selecting different view parameters. In Figure 2, the multibeam matrix displays the average value, while the laser matrix displays the number of samples per cell.

FIGURE 2. Multibeam and Topographic Matrices Configured with Different View Options

