



Configuring the Kongsberg EA440 in HYPACK®

By Muhamad Azie Zairie and Boris Schulze

The Kongsberg EA440 software has been updated, and so we felt that an updated document might help with configuring the device connection.

HYPACK® has the KONGSBERG NETWORK driver (KongsbergNetwork.dll) to work with the EA440 single beam echosounder. Previously, it worked only with the EA400 echosounder. In addition to the digitized depths, the driver saves the echogram and side scan data (if you have the side scan option). You must set up the echosounder properly for HYPACK® to read the proper datagrams. This article describes how to set up both the echosounder and the driver.

EA440 SOFTWARE

1. Set **Operation** to **Inactive Mode**.
2. Create a LAN Port.

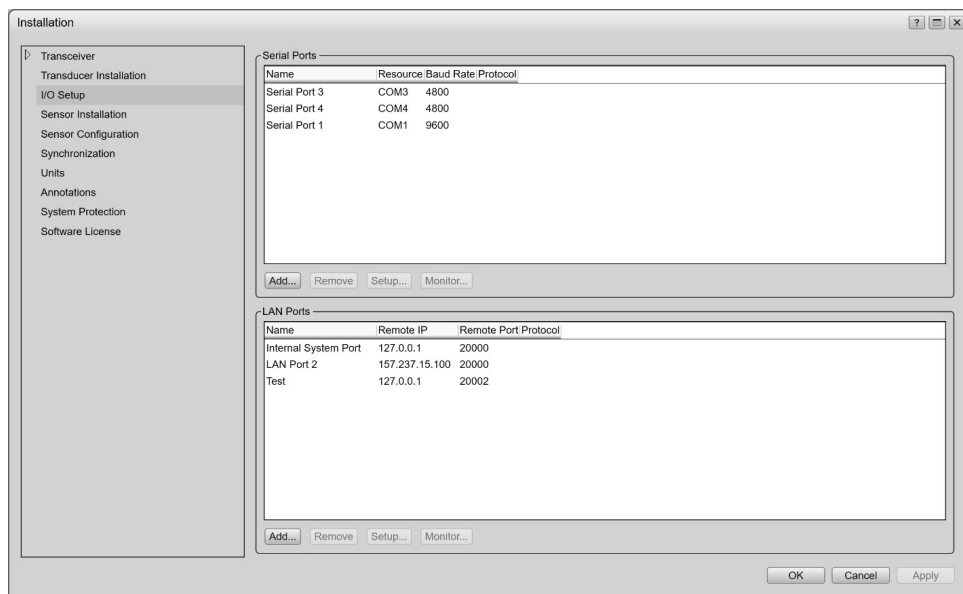


- a. In the Setup tab, select installation and click [Add].



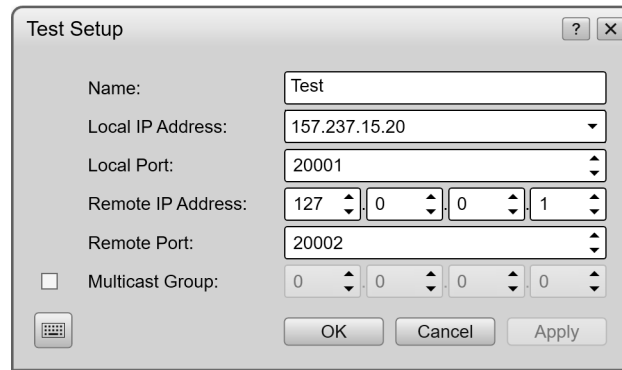
, select I/O Setup, and

Figure 1. Adding a LAN Port



-
- b. Select Test under the LAN Port list, click [Setup...].

Figure 2. Setting the Local IP Address



- c. Choose your **Local IP Address** for your PC.
- d. Note the **Local and Remote Ports**. (Local will be your write port in HYPACK®. Remote will be your read port).

3. Set Operation to Normal. 

4. Under the Operation tab, click Output. 


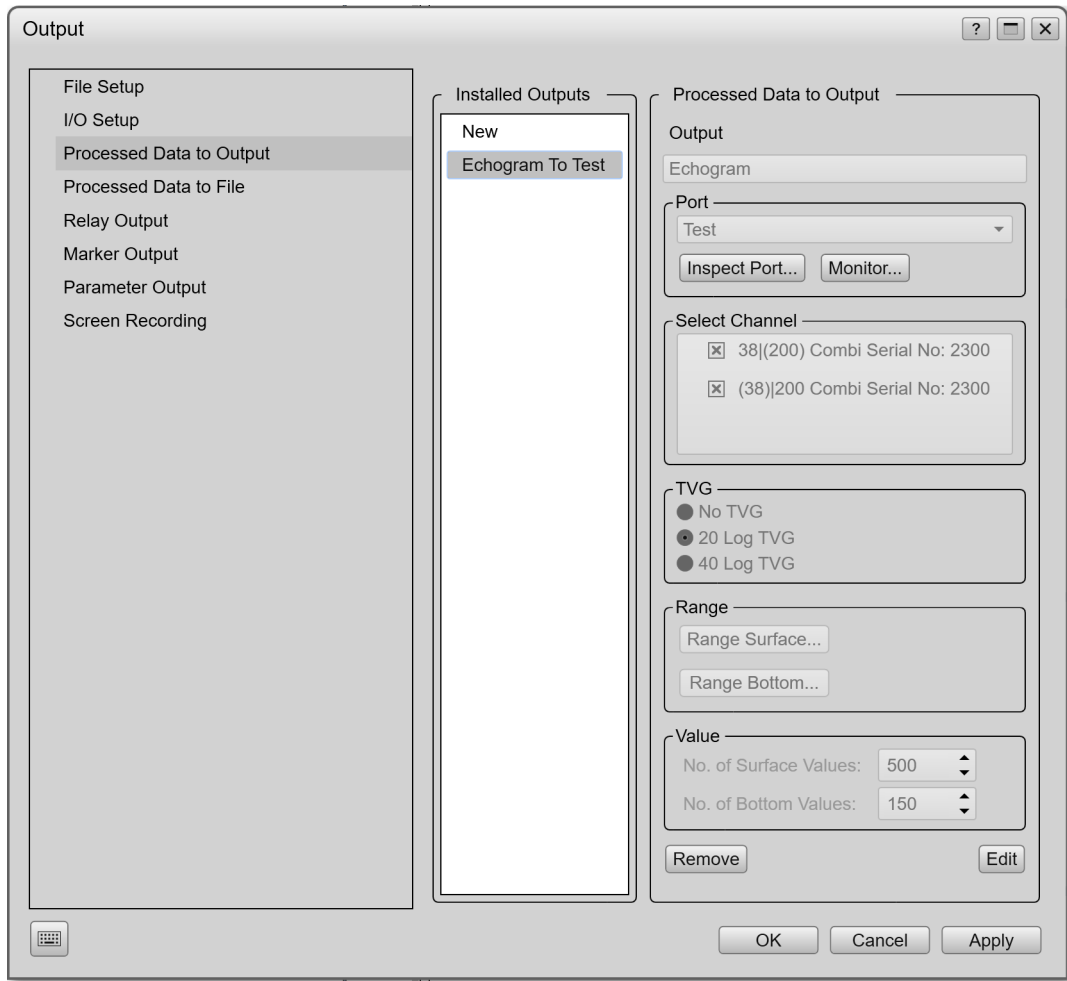
- Select **Processed Data Output**.
- Under the [Installed Output] column in the middle, choose **New**.
- Under the [Processes Data to Output] column:
 - Select **Echogram** under Output option.
 - Select **Test** under the Port Option. This is the LAN Port you set up earlier.
 - Select **echosounder channels** available.
 - Leave TVG, Range, and Value as the default.
- Click Add. 

Figure 3. Processed Data Output Configuration Dialog




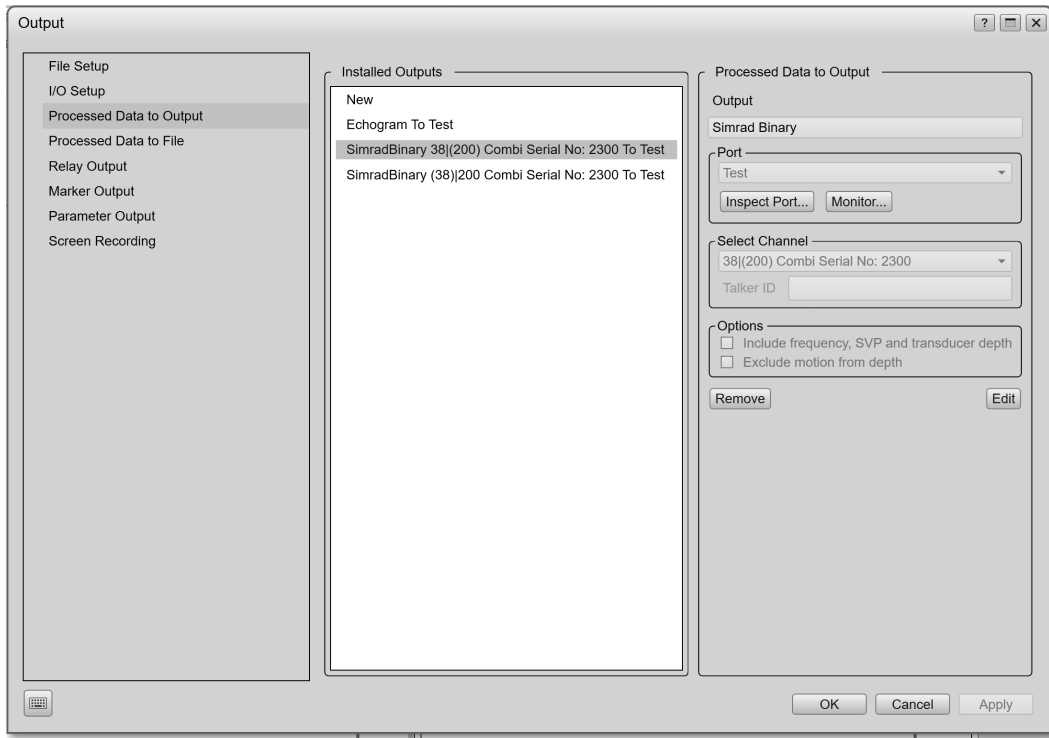

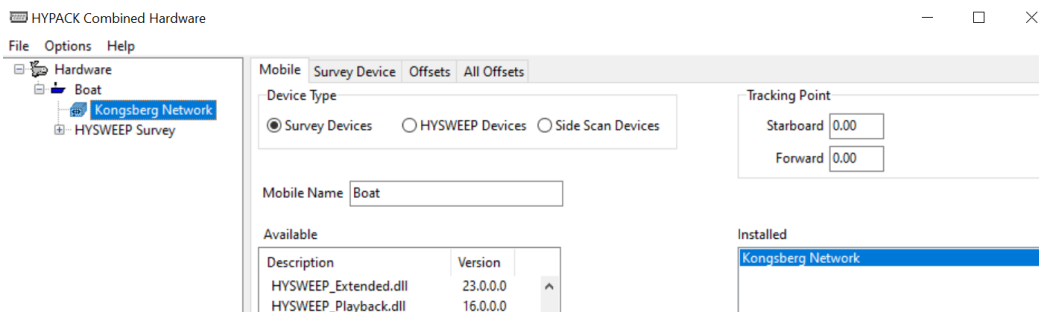
5. While still in Output window, select New in the Installed Outputs column.
 - a. Select **Simrad Binary**.
 - b. Select **Test** under the Port Option. This is the LAN Port you set up earlier.
 - c. Select an available channel.
 - d. Click Add. 
 - e. Repeat for multiple channels.
 - f. When done, click [Apply].

Figure 4. Installed Outputs Applied



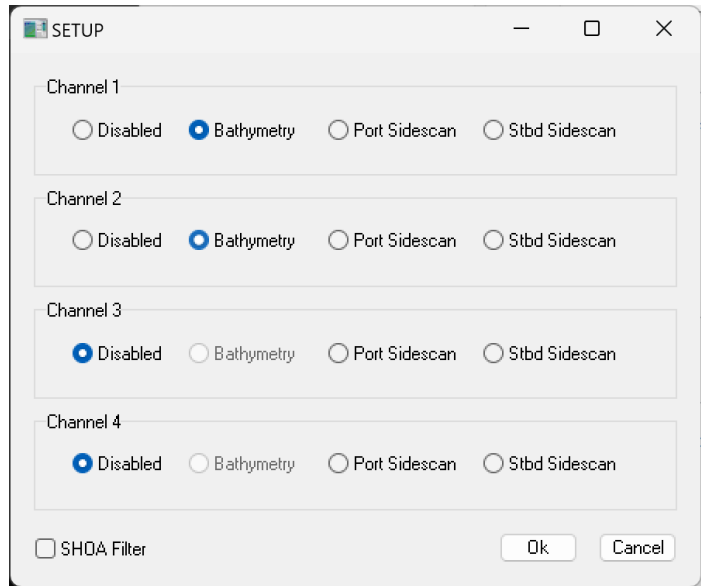
HYPACK® HARDWARE

1. In **HARDWARE SETUP** , add the KONGSBERG NETWORK driver (KongsbergNetwork.dll).



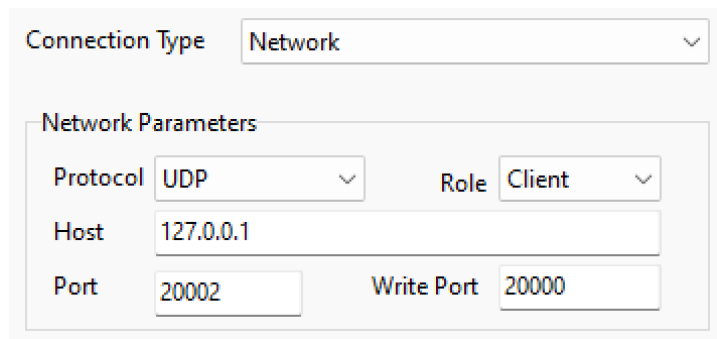
2. Select the Survey Device tab. Click [Setup] and select appropriate channel options.

Figure 5. KongsbergNetwork.dll Driver Setup Dialog



3. Still under the Survey Device tab, select Connection Type.
 - a. Select **Network**.
 - b. Protocol **UDP**.
 - c. Role **Client**.
 - d. Host **127.0.0.1**.
 - e. Enter port info noted from the EA440 software setup.

Figure 6. Network Parameters



4. Test Configuration. Click on Test Device to see the SURVEY display and verify everything is working properly.

NOTE: The EA440 Software must be running.

Figure 7. EA440 Running with Ping On

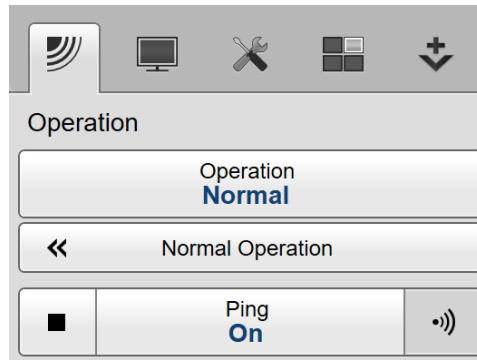


Figure 8. Sample Kongsberg Network Display

