



## Computer Performance Options for the SBET EDITOR

By Caryn Zacharias

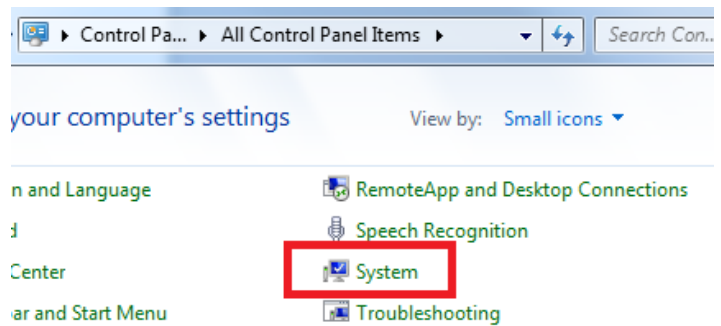
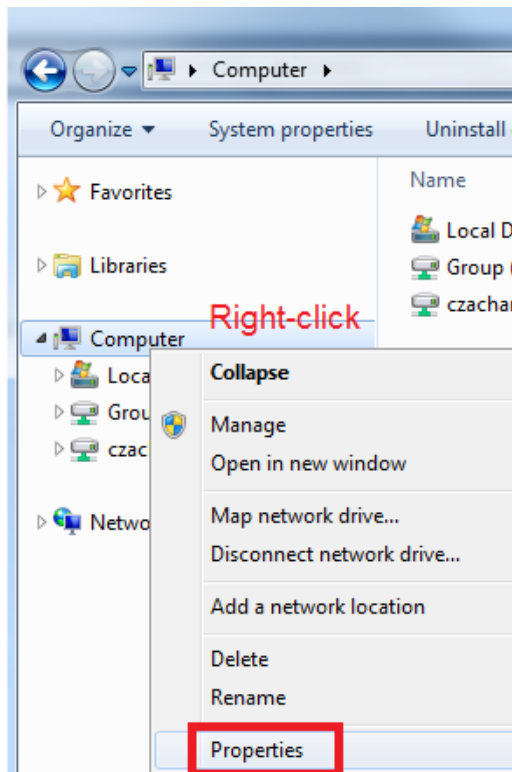
We have noticed that some HYPACK® users have had issues displaying their SBET files in the SBET EDITOR. The file loads and might display on the screen, but the user is not able to zoom in or pan around; or they see that the file loads, but nothing displays on the screen.

We have found if they go into the Performance Options and select the 'Adjust for best appearance' or 'Custom:' and selects all options, the display issue goes away.

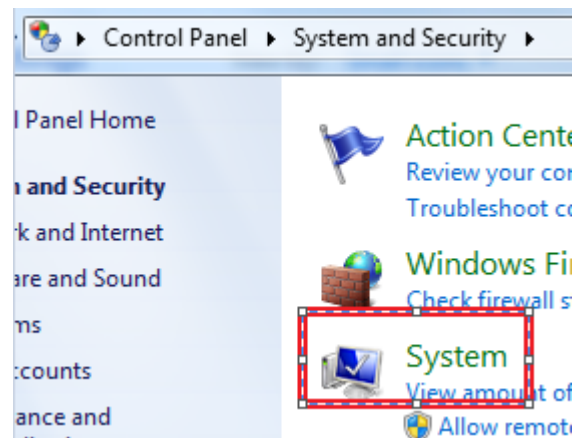
In this article, I will explain how to set this option up. If you find other programs are having some weird display issues you can always check these settings first and see if this resolves them.

### HOW TO SET THE PERFORMANCE OPTIONS

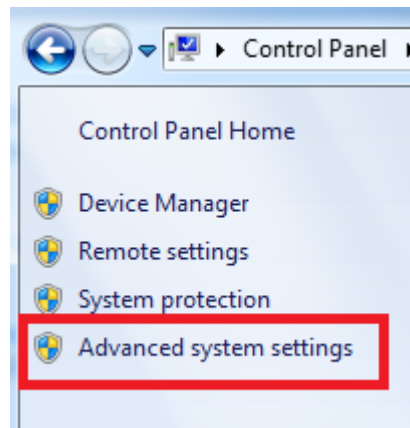
1. Open Windows Explorer.
2. **Right-click on Computer and select Properties**, or Go to the Control Panel – System and Security, or All Control Panel Items – System.



OR

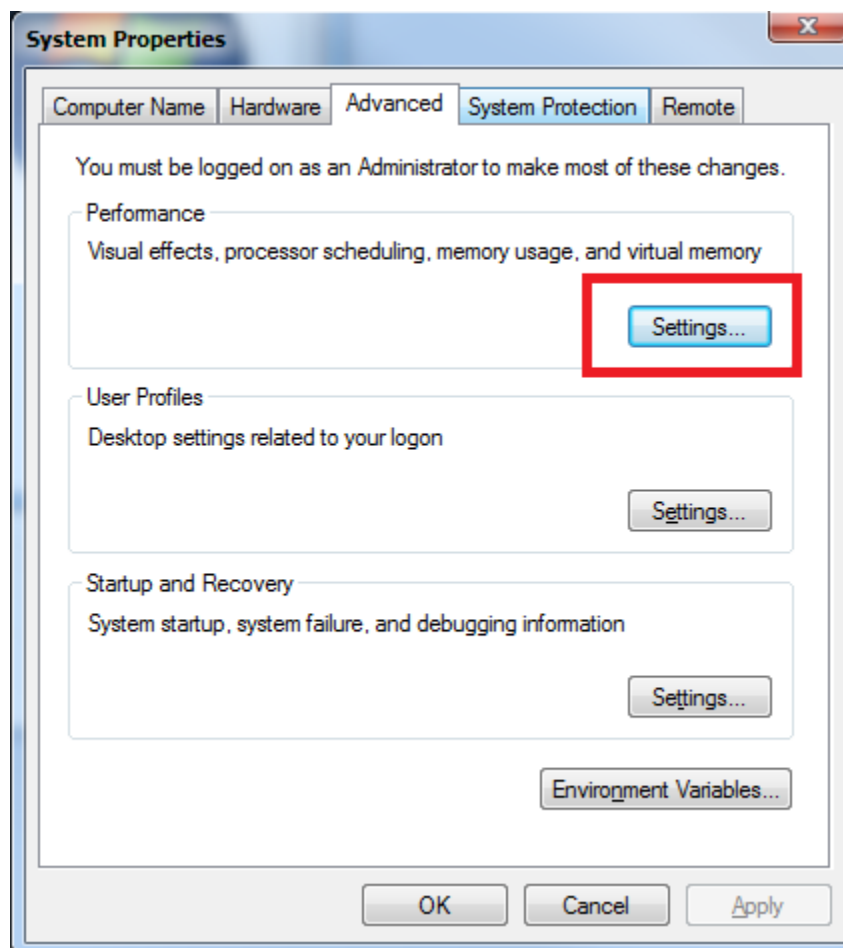


3. In the new screen that opens, **select the Advanced System Settings**. The System Properties window will open.



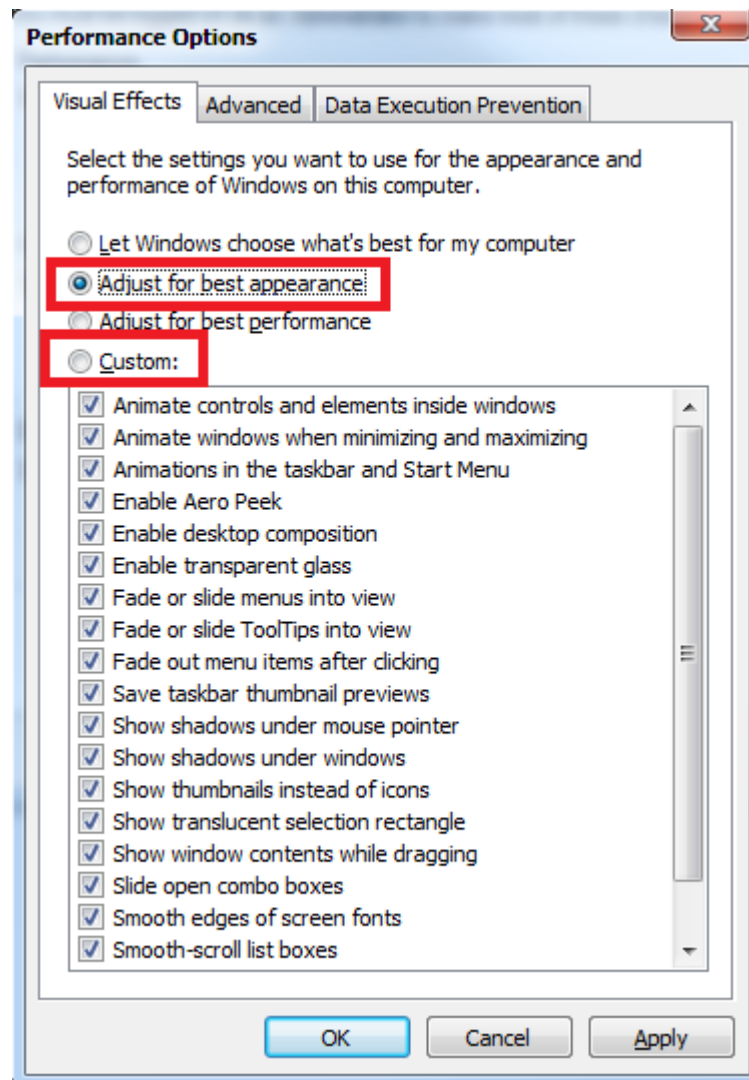
4. In the Advanced Tab, under Performance, click [Settings...]. The Performance Options window will open.

**FIGURE 1.**



5. Choose 'Adjust for best appearance', or 'Custom' and select all options.

FIGURE 2. Performance Options Dialog



That's it! Please let us know if you continue to have display issues after trying this.

As always, feel free to contact [help@hypack.com](mailto:help@hypack.com) with any issues or concerns.