



**HYPACK**  
a xylem brand

Sounding Better!

## Connecting a Kongsberg Mesotech M3 and HYPACK/ HYSWEEP

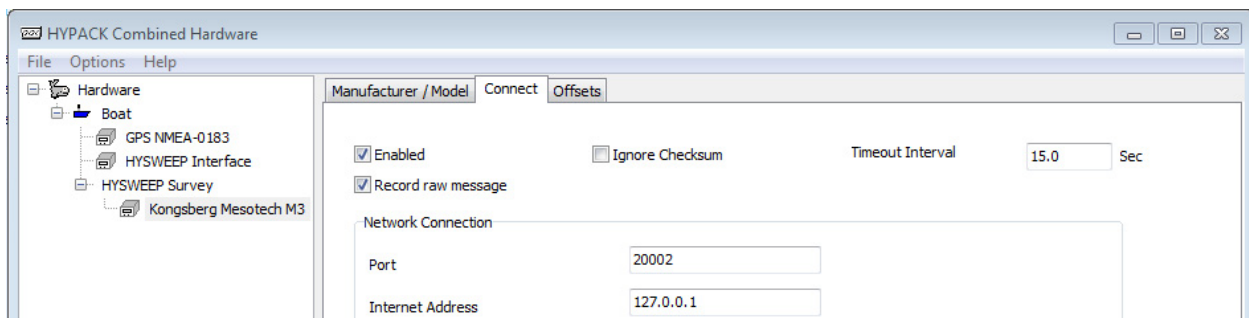
By Caryn Zacharias

I have been meaning to get this article posted for some time now. Then, the other day, I received a call from a customer having an issue bringing the M3 data into HYPACK®. I was able to get the customer working in a few seconds. It was just one little step that is necessary with the M3.

As most of you have found out, there are certain orders necessary when starting up your equipment and software. This is true for the M3 as well. HYPACK®/HYSWEEP® Survey must be started, then in the M3 Software “Export Data” is selected. Please see the M3 HYPACK® HARDWARE setup, as well as the configuration needed in the M3 software.

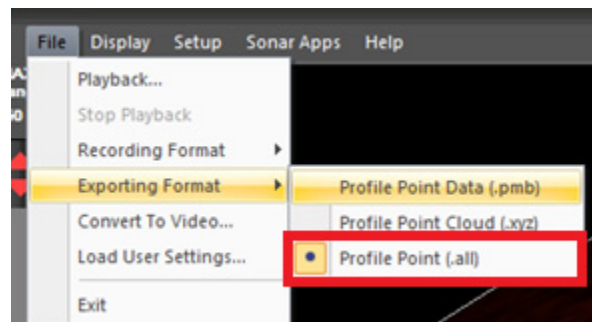
### **HYPACK® HARDWARE**

Add the Kongsberg Mesotech M3 driver under HYSWEEP® SURVEY. The default Port number for the M3 is 20002. Check the [M3 Software Setup](#) step 3 to verify the port and IP.



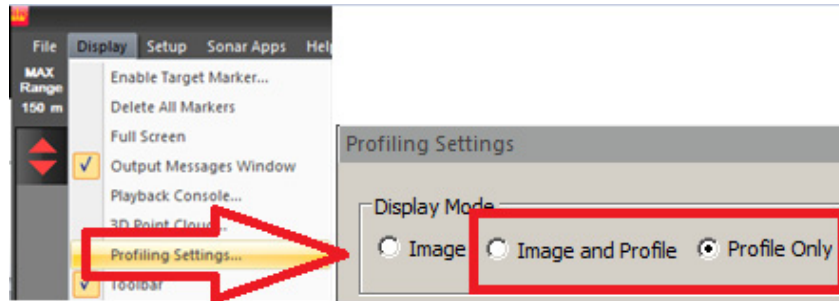
### **M3 SOFTWARE SETUP**

1. **Export the \*.all file.** Select FILE–EXPORTING FORMAT–PROFILE POINT (.all).



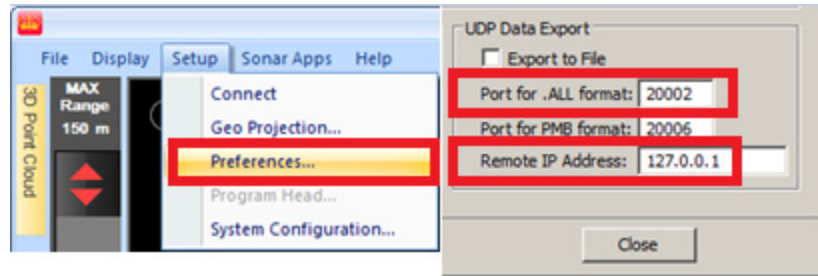
2. **Profiling Setup:**

- a. **Select DISPLAY – PROFILING SETTINGS.**
- b. For bottom Detection, choose “Image and Profile” or “Profile Only”.



3. **UDP Data Export:**

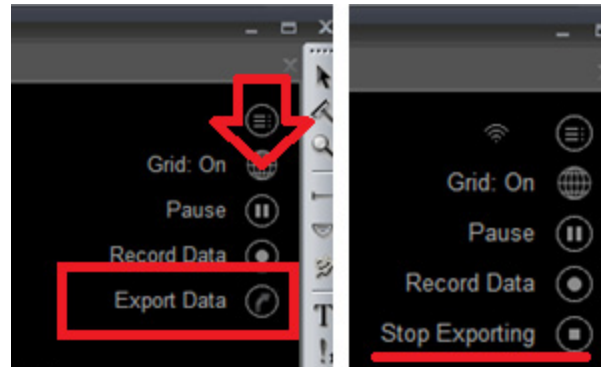
- a. **Select SETUP – PREFERENCES.**
- b. **Port for .ALL Format: 20002**
- c. **Remote IP Address: 127.0.0.1**



4. **Export Data:**

- a. **Expand the record option.** Click on top right corner.
- b. **Start HYPACK®/HYSWEEP® then click ‘Export Data’.**

Stop Exporting will show when it is exporting data.



As always if you have any issues or questions please contact HYPACK® at [help@hypack.com](mailto:help@hypack.com)