



HYPACK
a xylem brand

Sounding Better!

Marine Search 2016a Service Pack

By Daniel Tobin

The popular Marine Search package we released in 2016 is receiving a service pack with a number of new features, interface tweaks, and bug fixes. This update should make the package more powerful and accurate for our customers.

LAYBACK CALCULATIONS

The first change we've introduced is a completely new method for calculating layback in Marine Search.

When you open GEODESY / HARDWARE from the shell, you'll notice the Side Scan Sonar section has some new options.

FIGURE 1. The new Geodesy and Hardware layout:

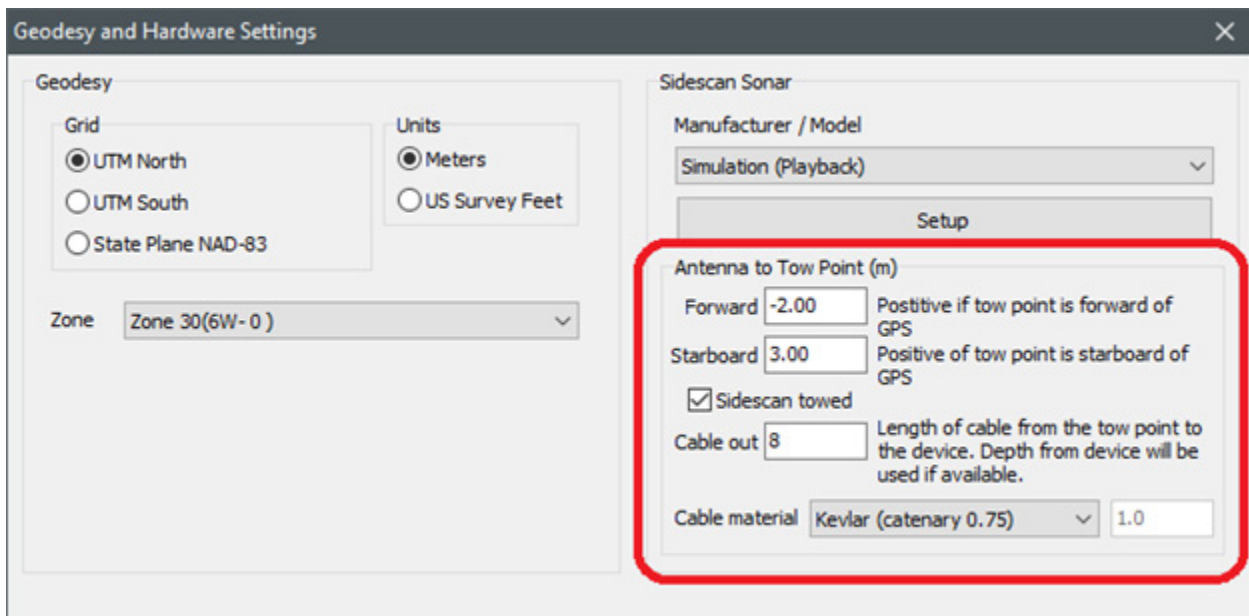
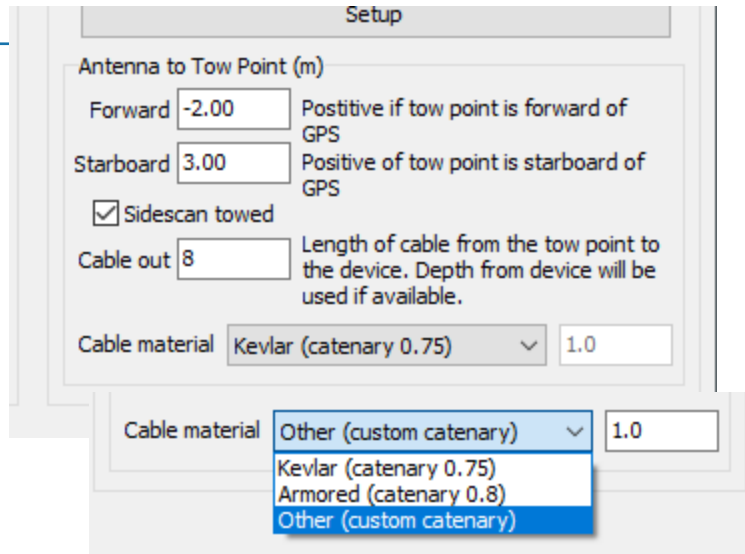


FIGURE 2. Closeup of the Change:

You can still set forward/starboard offsets, but now you can set a layback from that offset. This should be used when you're towing your side scan sonar and the tow point is offset from your GPS.

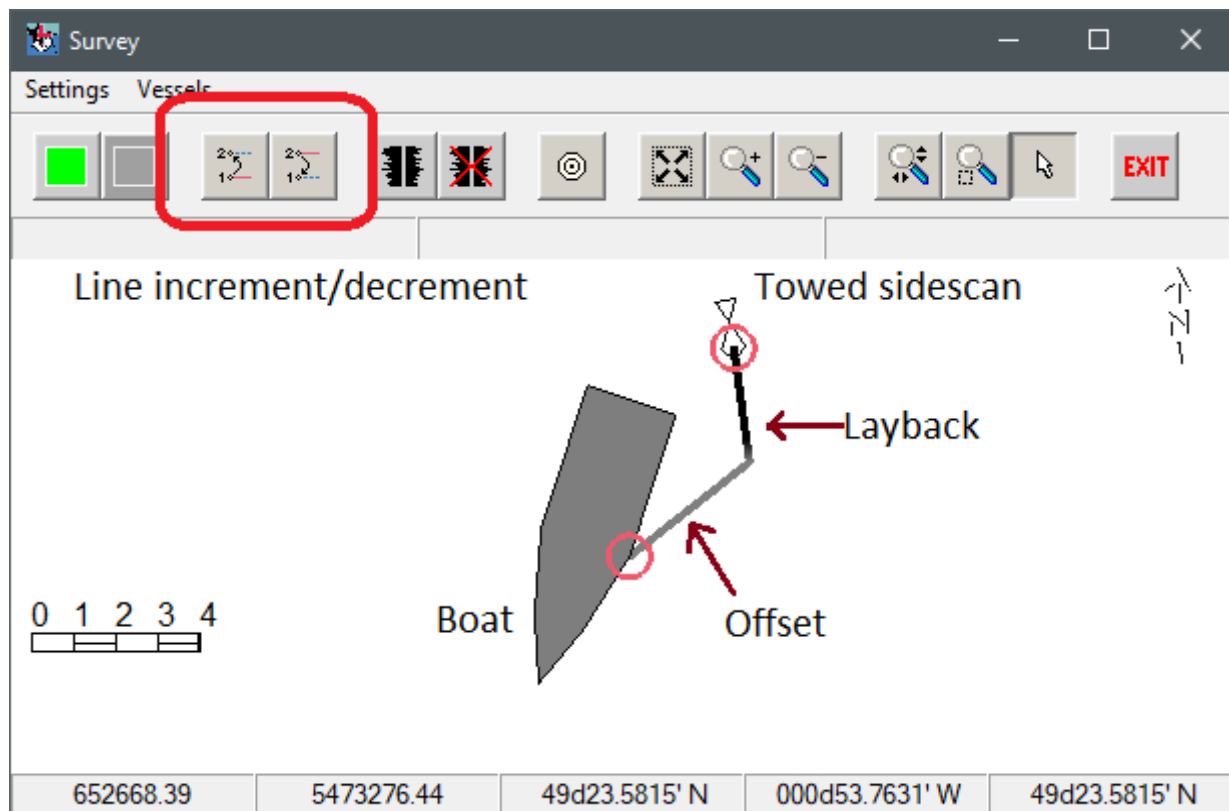
You may also set a catenary factor for your towfish, based on your cable material.



SURVEYING WITH A PLANNED LINE FILE

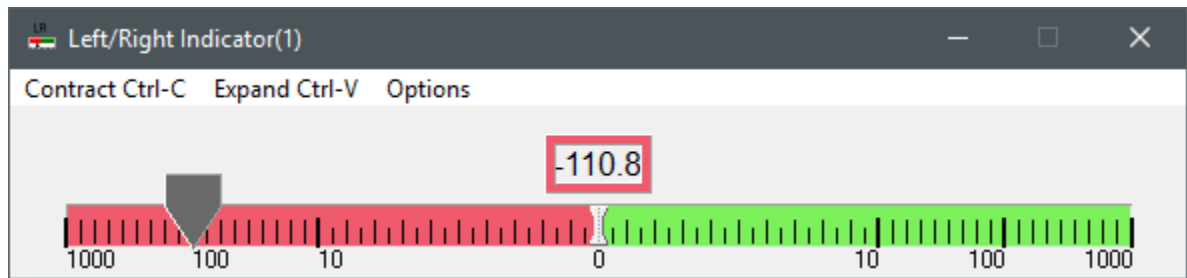
If you have a line plan in your survey, the SURVEY interface has new buttons that can be used to increment/decrement which particular line you're tracking. Here's what SURVEY looks like when using fixed offsets and a towfish while using a line plan:

FIGURE 3. SURVEY with Planned Lines, Fixed Offsets and a Towfish



When you're using a line plan, you'll also have a left/right steering indicator, useful for piloting:

FIGURE 4. Sample Left-Right Indicator



SIDE SCAN SURVEY INTERFACE UPDATES

You'll also notice an update in the SIDE SCAN SURVEY interface. The towfish layback adjust buttons are now much larger and more visible

FIGURE 5. Layback —More Visible, Easier to Use

