



HYPACK
a xylem brand

Sounding Better!

What We Did Last Summer

By Boris Schulze

I don't know what *you* did last summer. You probably had some nice vacations and enjoyed the summer (unless you live in Germany where it rained a lot this summer). I know what I did last summer. Like you, I went on vacations, but I did some work as well! Part of that was a nice little workshop in the Lausitz, an area in the eastern part of Germany.

This workshop was organized by my colleague, Falk Richter from Xylem Analytics, in Germany. We were doing a few presentations about HYPACK® and other products before we took the class (around 20 people) down to a renatured open cast mine, now the Senftenberg lake, to try the kit in reality.

The area is quite fascinating. The Lausitz is a chain artificial lakes being constructed through flooding as a part of an extensive regeneration program. Several decommissioned, opencast lignite mines are being transformed into Europe's largest artificial lake district. Since the 1970s, some of the old pits left by the mining process have been transformed into a new landscape formerly unknown in this region. What was once a plain, overgrown with heather and a few trees, is now a lake district.



The lakes need to be constantly monitored, so it is a good opportunity to show how we can help using the SonTek M9 ADCP combined with HYPACK®.

This time, we used the rQPOD, a lightweight, remote survey boat equipped with a SonTek M9 ADCP, to collect discharge measurements and do a bathymetric survey at the same time.

We had a great time and lots of fun driving the rQPOD around. The sun came out as well and brought two really warm days.

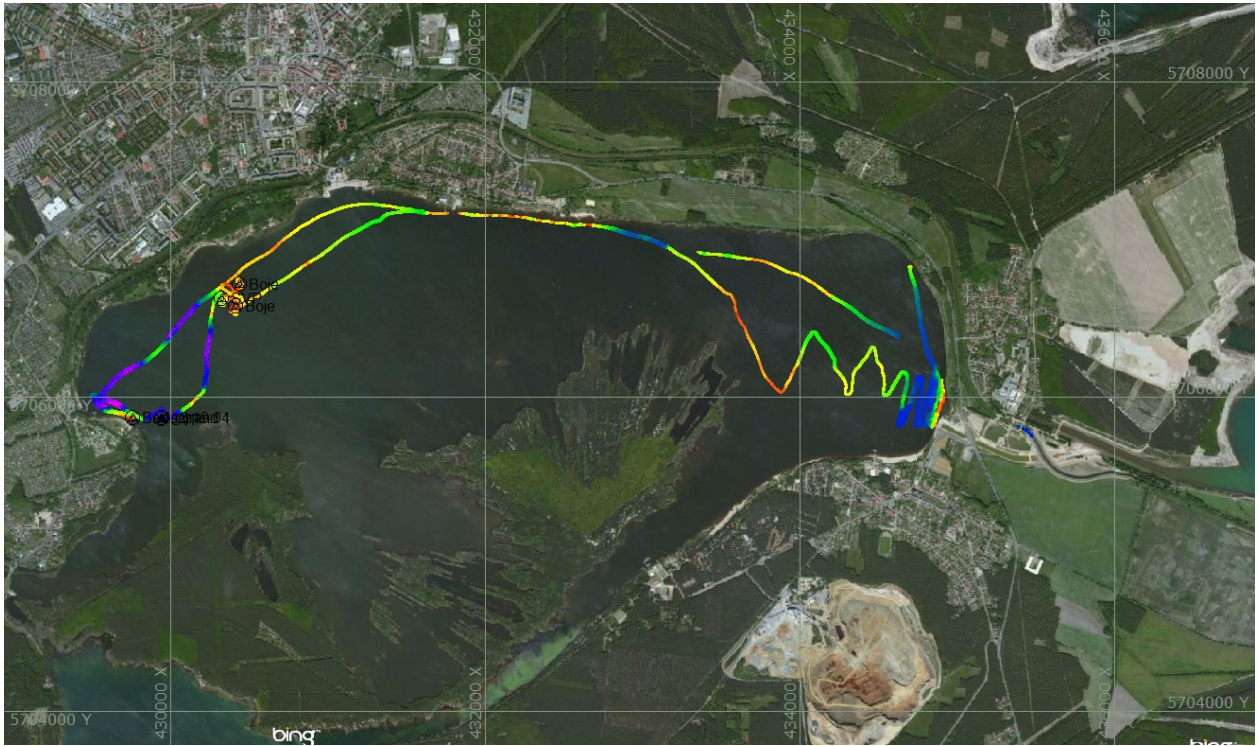
FIGURE 1. Castaway CTD (left)



FIGURE 2. Falk with some clients and a Flowtracker 2 (left), rQPOD with M9 ADCP (right)



FIGURE 3. The Senftenberg Lake with Survey Results



Boris

Boris@hypack.com