



HYPACK
a xylem brand

Sounding Better!

Brunswick Engineering Chooses HYPACK NEXUS 800 to Place Them as a Leader in the UAV Industry

By Lourdes Evans



HYPACK
a xylem brand



HYPACK is excited to have Brunswick Engineering as a new member of our NEXUS 800 family.

When asked why Brunswick chose the HYPACK Solution, President and Founder, Stephen Perry said:

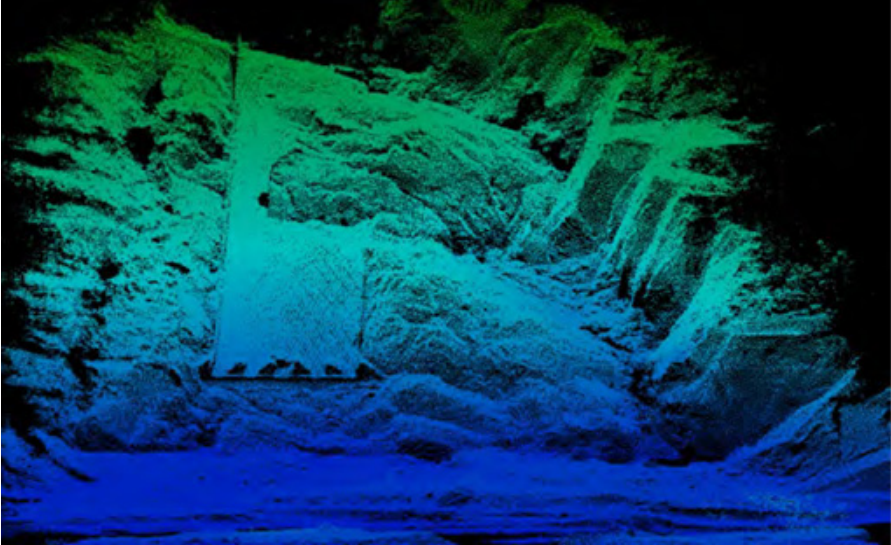
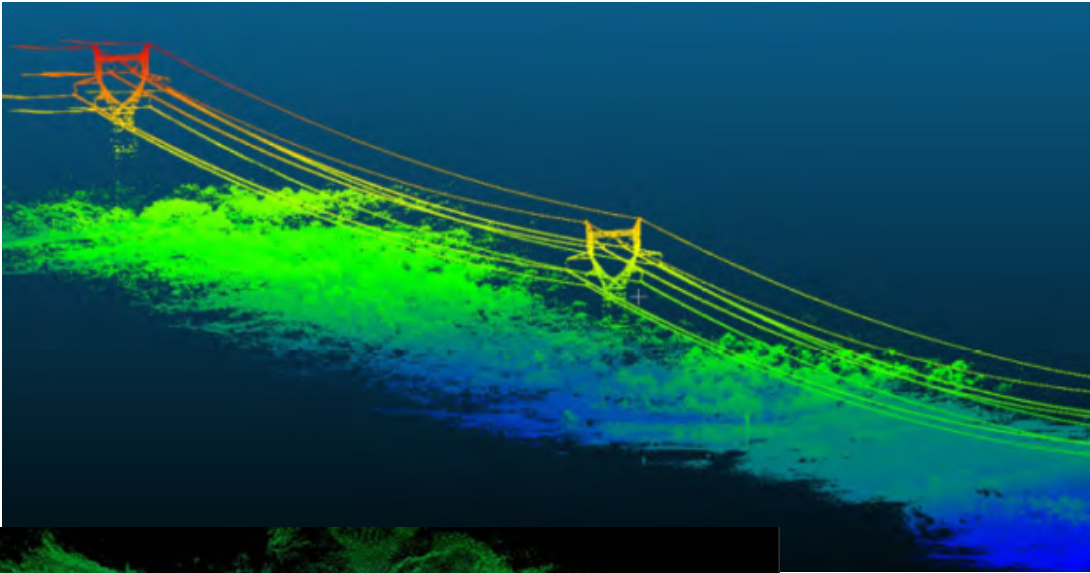
“Brunswick Engineering is excited to welcome the NEXUS 800 into our fleet of UAVs.” and “The NEXUS will be our UAV craft and, by far, our most powerful. The NEXUS 800 will be a nice complement to our ever-growing UAV service base and we believe the NEXUS will provide us a platform that will enhance our ability for advanced sensor integration beyond the intended LIDAR puck.

With the NEXUS 800 we hope to remain at the leading edge of the industry and are proud to have one of the first, if not the first, UAV based LIDAR unit operating in Atlantic Canada”

Based out of Saint John, New Brunswick, Brunswick Engineering & Consulting Inc. is a locally-owned and operated engineering consulting firm serving clients throughout Atlantic Canada. Incorporated in 2012, Brunswick Engineering provides a wide range of services including contract administration, project management, design, laboratory testing and construction inspection.

WHY CHOOSE LIDAR?

The LIDAR technology excels where the photogrammetry fails. Photogrammetry software has problems dealing with heavily vegetated areas; with moving water; blue sky with clouds; dark conditions; smooth, white, snow-covered surfaces and shadows. These problems can lead to anomalies in the data, or simply to the inability to process. The LIDAR removes these problems. (You can read about the HYPACK® vegetation filter in “Vegetation Filter for LiDAR Data” by Jerry Knisley in this issue of *Sounding Better!*.)



THE NEXUS 800

The NEXUS 800, powered by HYPACK®, is a full, end-to-end solution that represents a new paradigm in Unmanned Aerial Vehicle (UAV) data collection by seamlessly harmonizing LIDAR data with photogrammetry. The NEXUS 800 is an out-of-the-box turnkey system that tightly integrates hardware and software to provide an advanced and seamless solution for LIDAR survey planning, data acquisition, post-processing and analysis, and product creation.



Powered by our HYPACK®-HYSWEEP® mapping software, the operator can plan, acquire, and process the LIDAR and Photogrammetry data onboard a high-powered Windows® PC and high performance UAV allowing for rapid analysis and product creation of a variety of CAD and GIS formats.

For more information, please email us at unmanned@hypack.com