



**HYPACK**  
a xylem brand

Sounding Better!

## Valeport SWiFT SVP Interface

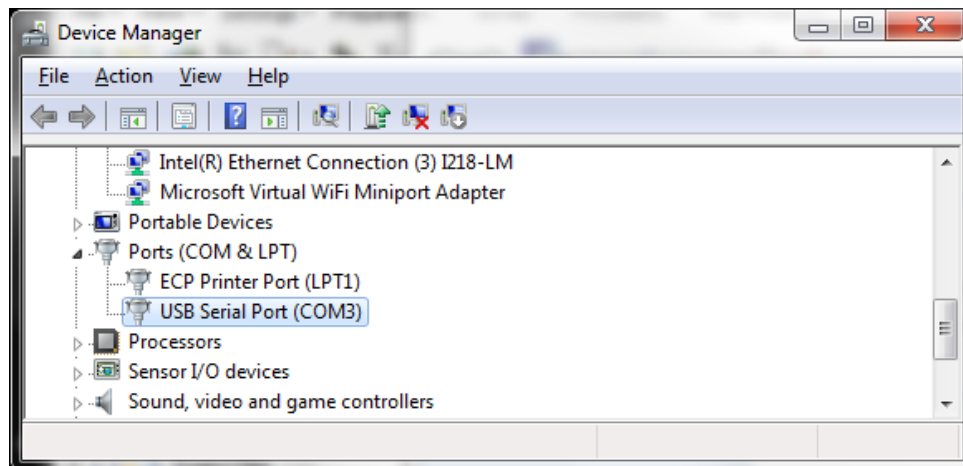
By John Lindberg

HYPACK recently added an interface to download sound velocity directly from the Valeport SWiFT SVP via Bluetooth. While the SWiFT can export a HYPACK® \*.VEL file from the Valeport DataLog software, this interface makes it much easier for you to download the SWiFT SVP sound velocity data directly into HYSWEEP® SURVEY and the HYPACK® SOUND VELOCITY program.



To use the Bluetooth function of the SWiFT SVP, you must use the Bluetooth adapter on the SWiFT SVP. This will be configured as a serial port as shown in the Windows 7 Device Manager:

*FIGURE 1. Configuring the Bluetooth as a Serial Port*



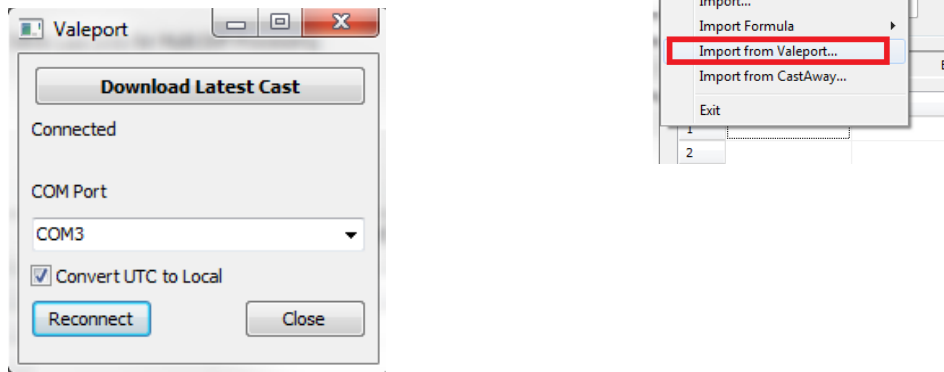
---

---

## IMPORTING THE SWIFT SVP DIRECTLY TO THE SOUND VELOCITY PROGRAM

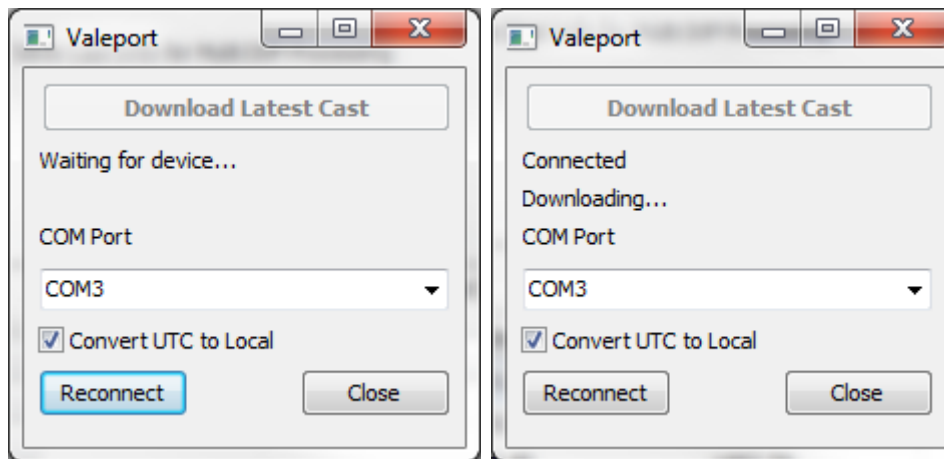
1. Select **FILE- IMPORT FROM VALEPORT**. A dialog will then pop up.
2. Select the proper **COM Port** and click **[RECONNECT]**.

**FIGURE 2.** Connecting the Valeport



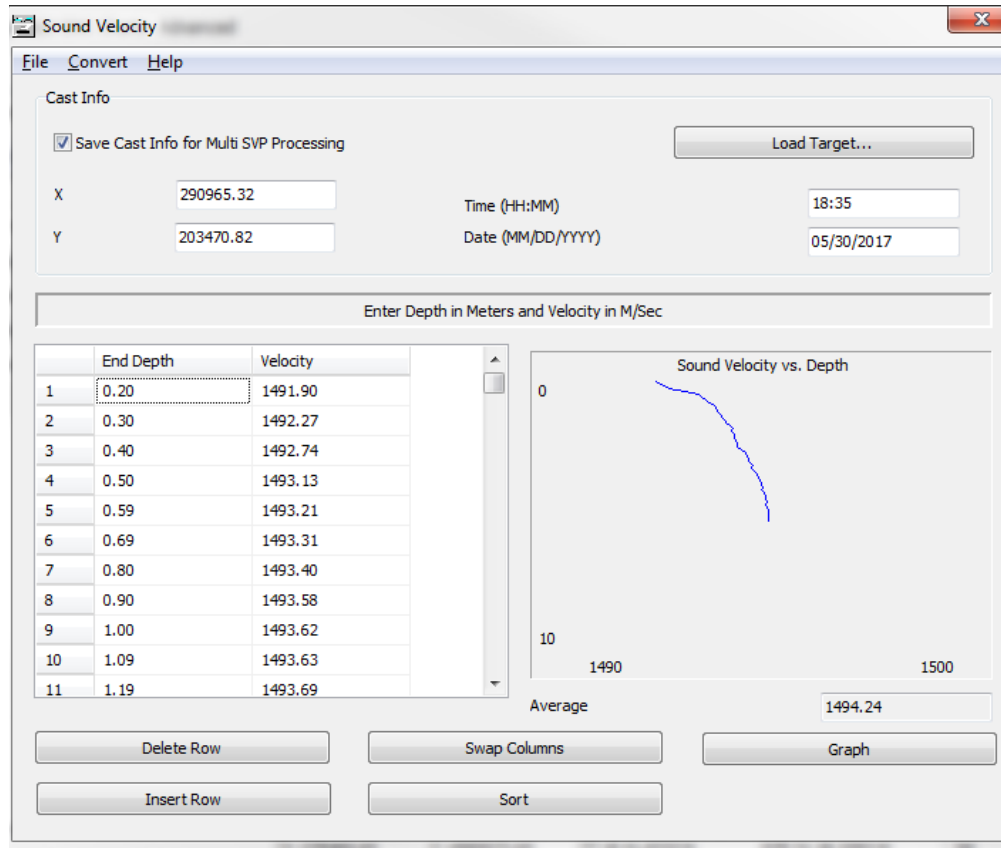
3. When the dialog shows that the **SWIFT SVP** is connected, you can click **[Download Latest Cast]**. You will see the status change from “Waiting for device” to “Downloading.”

**FIGURE 3.** Downloading the Sound Velocity Data



The downloaded SV data populates the SOUND VELOCITY program as shown here:

**FIGURE 4.** Downloaded SV Data Populates the SOUND VELOCITY Program



Since the SWIFT SVP has a built in GPS, the SOUND VELOCITY program will also download the time and position of the current cast. The position will be displayed, in local coordinates, based on the geodetic parameters in the current project.

4. **Save the \*.VEL file.**

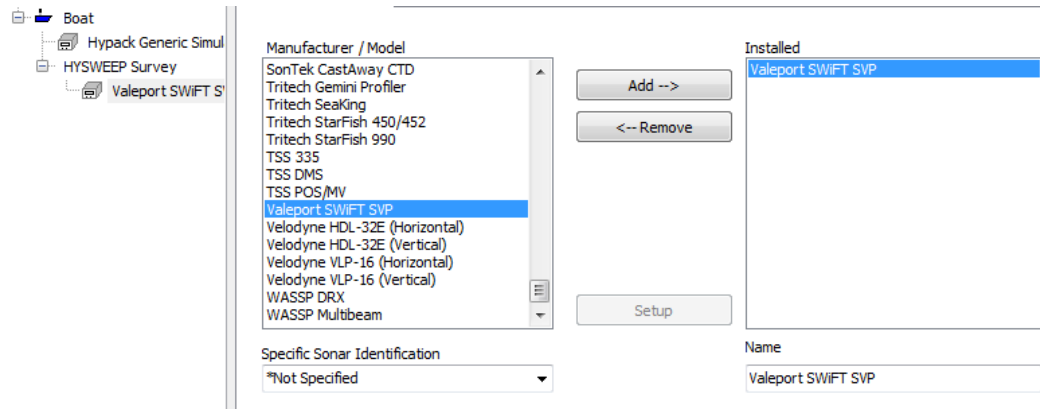
---

---

## THE SWIFT SVP IN HYSWEEP® SURVEY

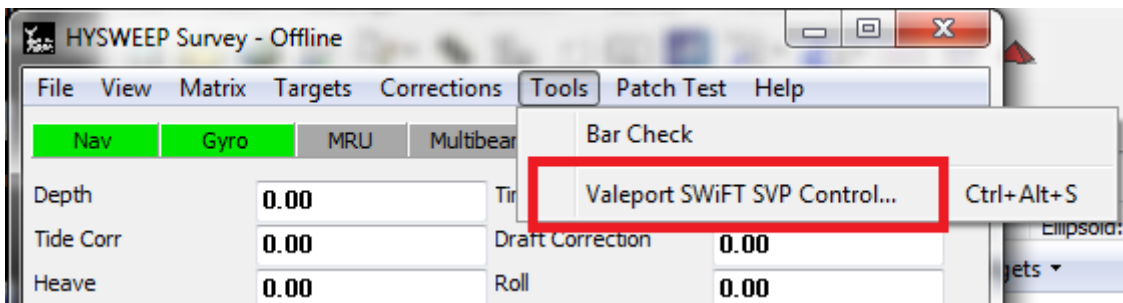
To use the SWiFT SVP in HYSWEEP® SURVEY, you must add it as a device in the HARDWARE program.

**FIGURE 5.** Adding the Valeport SWiFT SVP in HARDWARE



In HYSWEEP® SURVEY, you can download the latest cast through the TOOLS menu VALEPORT SWiFT SVP CONTROL item.

**FIGURE 6.** Downloading the SV Data to HYSWEEP® SURVEY



HYSWEEP® SURVEY downloads the cast, then gives you the option to preview the cast and save a HYPACK® \*.VEL file.

Currently HYPACK® and HYSWEEP® can only download the latest cast. We plan on giving the option to download additional casts in the near future so stay tuned!