

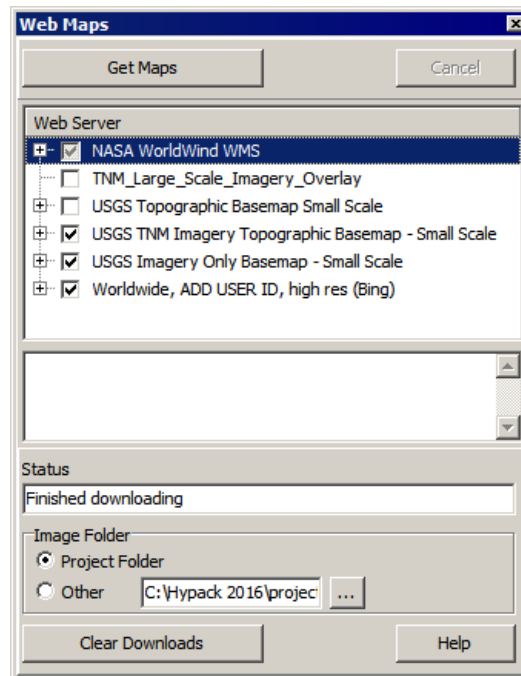


# Updated and Simplified Satellite Web Maps for HYPACK 2016

By Daniel Tobin

In the next release of HYPACK®, version 2016, Web maps has been updated and simplified to be quicker and easier to use. You can select VIEW->WMS WEB MAPS to see the Web Maps interface:

*FIGURE 1. Web Maps Interface*



## *SIMPLIFIED WEB MAPS*

You'll notice there are fewer buttons at the top compared to the 2015 release.

The server list was also simplified.

**To download a map,**

1. **Zoom to the area for which you'd like imagery.**
2. **Expand a server's listing to see its layers.** Different layers and servers offer different types of imagery of varying quality.
3. **Select a layer and click [Get Maps].**

FIGURE 2. No Web Map Loaded

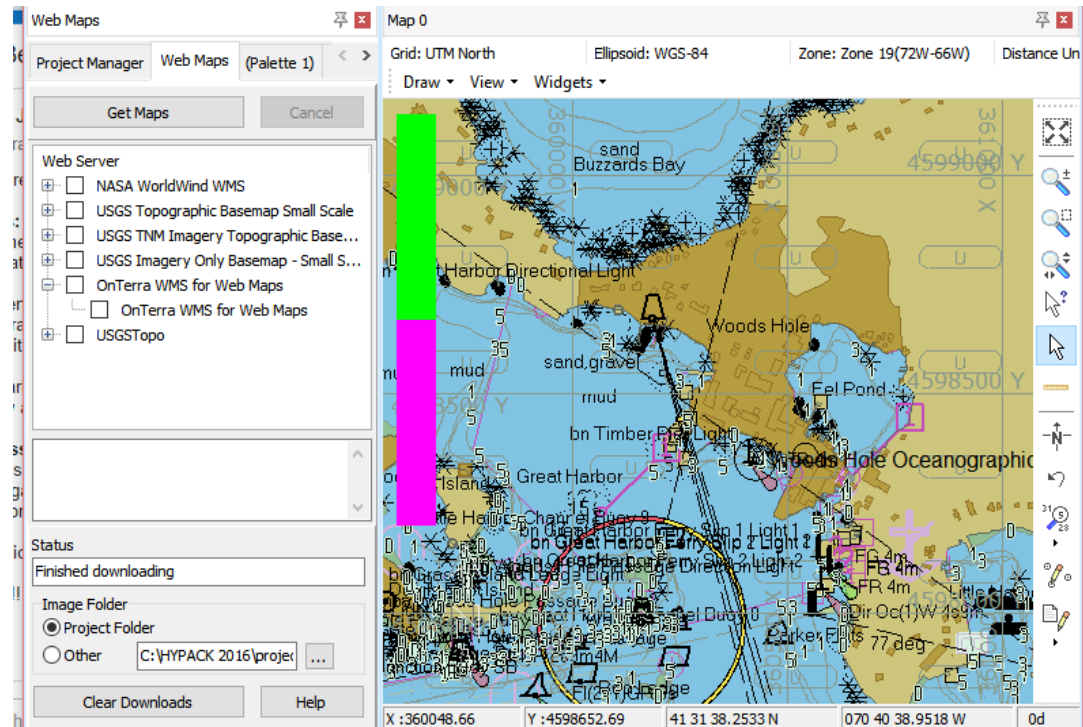


FIGURE 3. Low Resolution Web Map

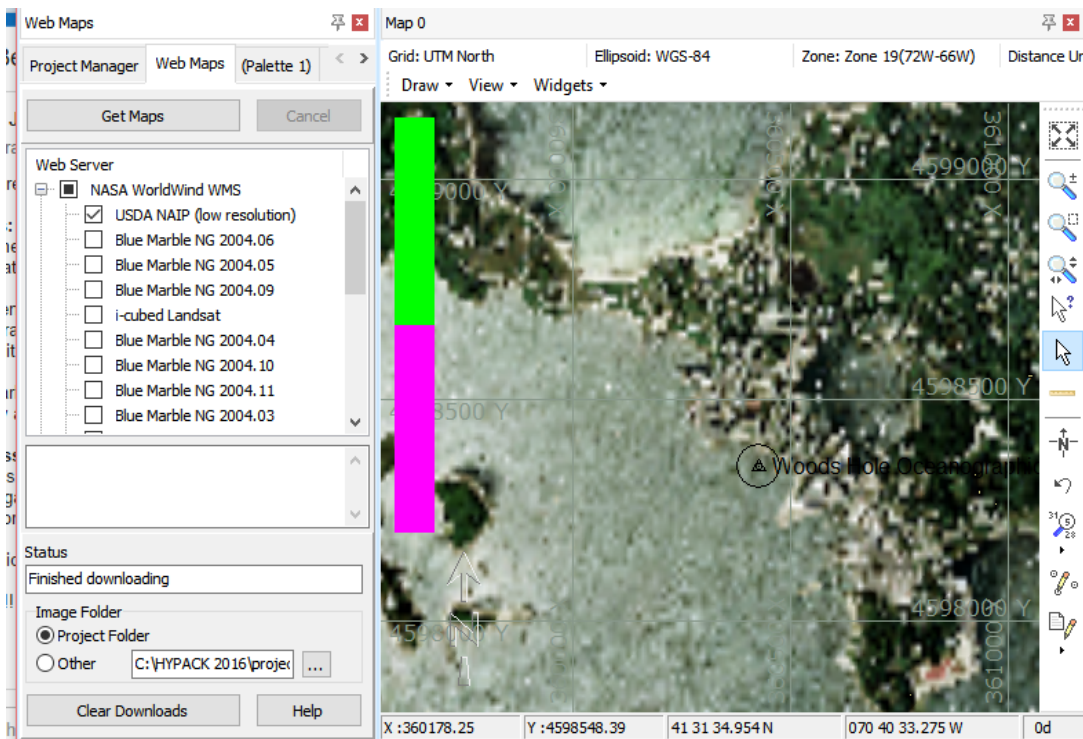
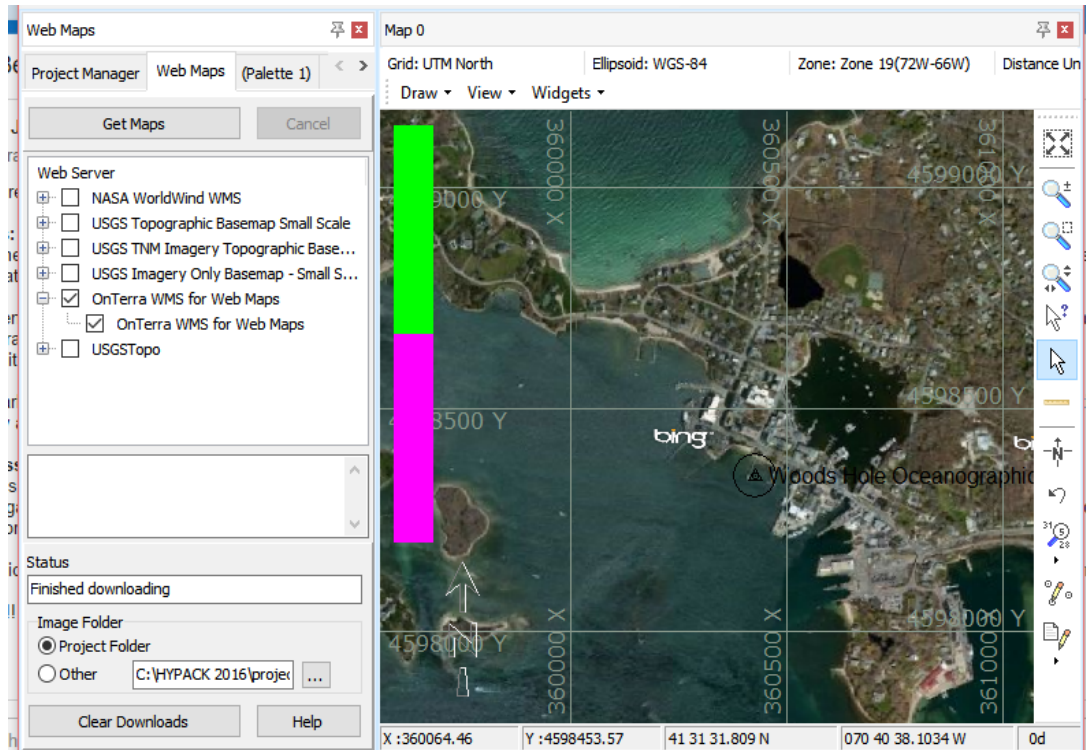


FIGURE 4. High Resolution Web Map



## WEB MAP TILED SERVICE

We're also happy to announce that, in addition to Web Map Service (WMS), we now support Web Map *Tiled* Service (WMTS).

**To add a WMTS server**, right-click in the Web Server window and click "Add Server". Then, enter the server information and check the box that says "This is a tiled web map server":

WMTS servers are generally faster than WMS servers, so you'll be able to get imagery faster than before with these.

