



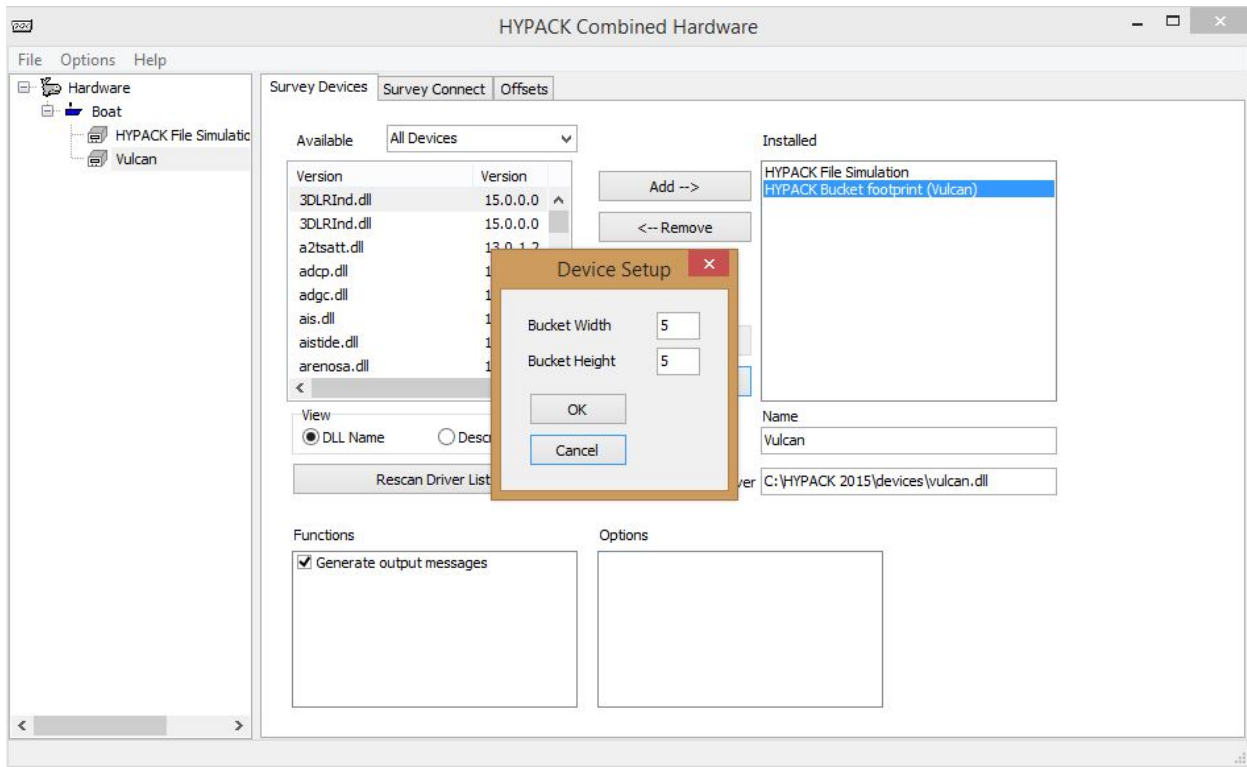
Span Multiple Matrix Cells with VULCAN Device Driver

By Christian Shaw

In situations where you want to span multiple matrix cells with a cutter tool in DREDGEPACK® or paint a matrix with the SURVEY program, HYPACK® has tweaked the old Vulcan driver.

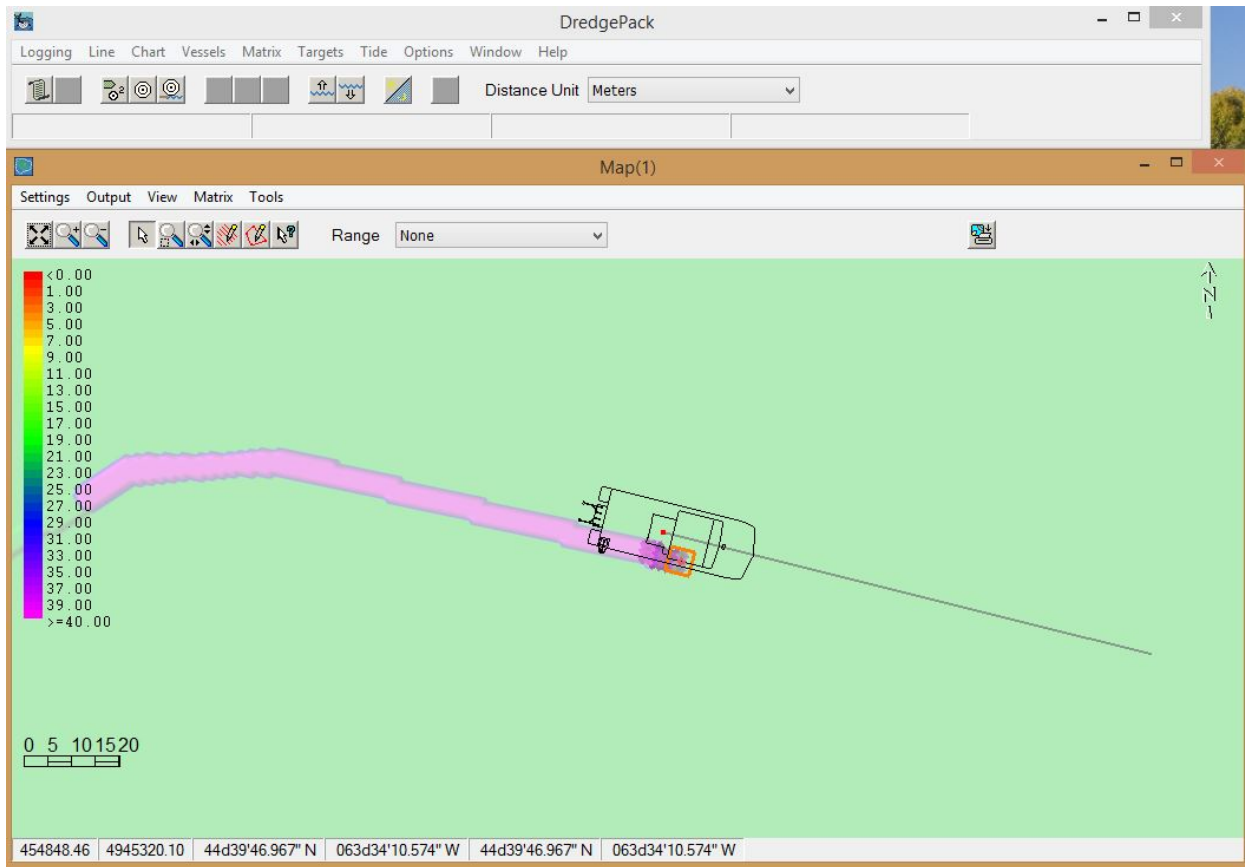
In the past the Vulcan.dll, setup in HARDWARE, called for not only the dimensions of the swath to be cut through a matrix, but also the number of nodes within the dimension. This caused some issues as there were gaps between matrix cells that were painted. Recently, programming has simplified this driver so that the only requirement in the Vulcan.dll setup is the dimension of the swath. The idea for this driver is to paint any high-resolution matrix with the exact dimension of any depth device in HARDWARE.

FIGURE 1. Vulcan Driver Setup



Now in the SURVEY or DREDGEPACK® program the painted matrix looks much nicer and the whole swath is colored based on the depths within the footprint of the Vulcan.dll.

FIGURE 2. *Painting the Matrix with the New Vulcan Driver*



This driver will be included with HYPACK® 2016.

Upon request our Technical Support department can also send it to customers with HYPACK® 2015.

NOTE: Not only do you need a new Vulcan.dll device driver but an updated SURVEY.exe program.