



DWG Layers

By John Marinuzzi

A new option to look for the upcoming HYPACK® 2016 will be the ability to turn DWG Layers on or off. In the past, you only had this option for DXF or DGN charts. Because we rely on third-party tools for the reading/creation and drawing of DWG charts, the options were limited. We have been working on expanding the functionality through these third-party tools and this is the first step. The next step will be to query the individual objects for their data.

FIGURE 1. DWG Layers—Matrix Layer ...Now you see it!

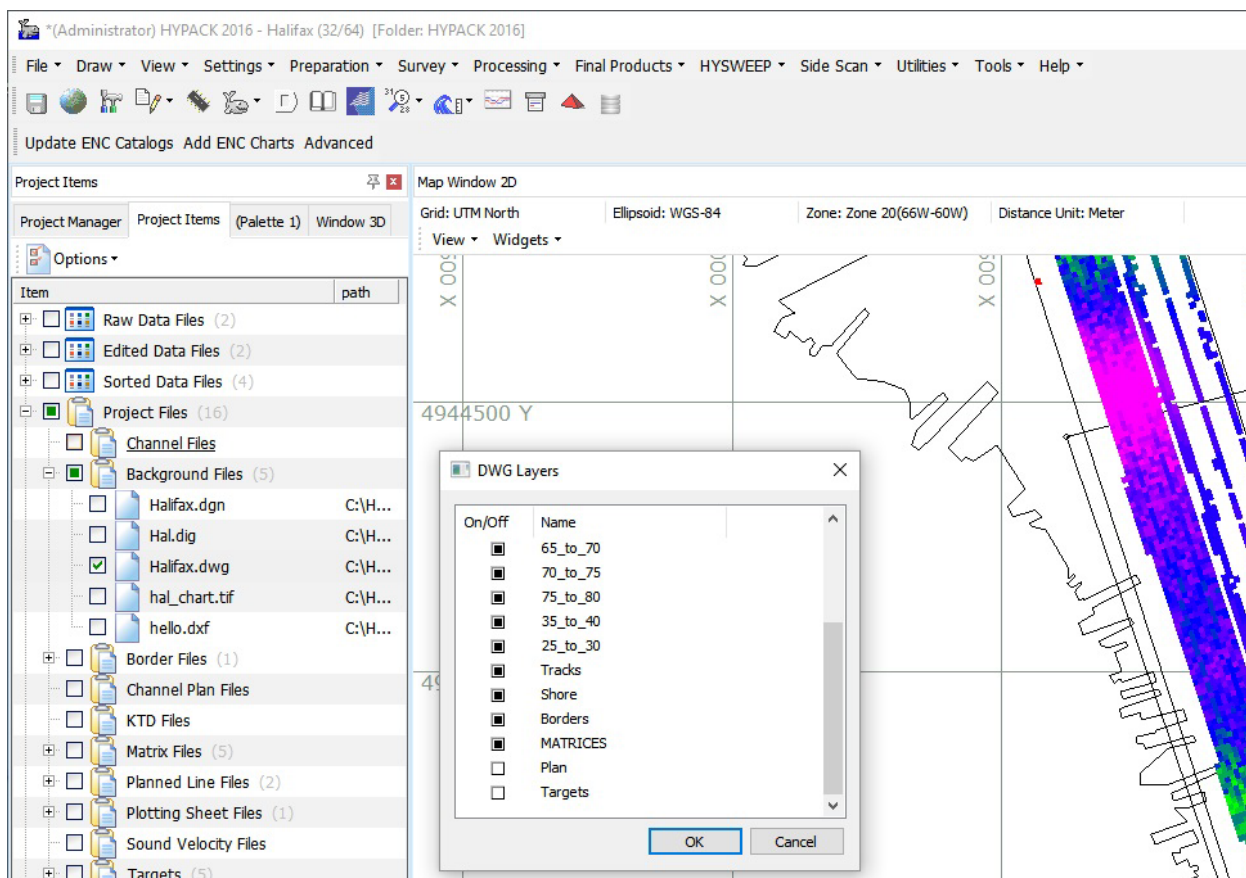


FIGURE 2. DWG Layers—Matrix Layer ...Now you don't!

