



# DREDGEPACK® Template Profile and Smoothing the Slope

By Christian Shaw

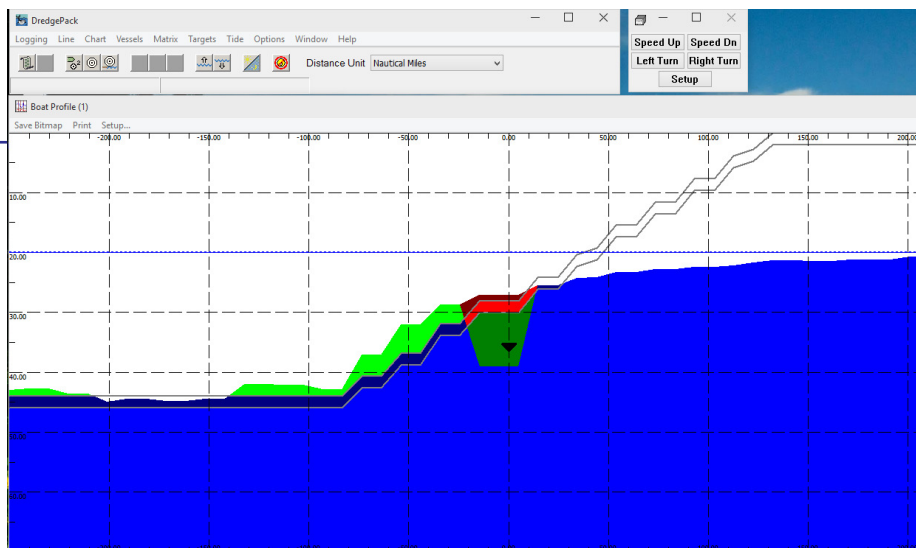
Many users use HYPACK® DREDGEPACK® to track the cutter tool relative to a CHN file. These templates contain slopes or grade changes that need to be seen so that it can be graded to the design prism. Because of the nature of the DREDGEPACK® program and how it displayed the slopes, in the past it has looked like a stair stepped slope regardless of how the CHN file was created. We have now put a provision in DREDGEPACK® under the Cutter Profile Setup Dialog to “Smooth” the template slope so that it appears the way it was designed in ADVANCED CHANNEL DESIGN. The profile is opened in the Vessel Setup dialog.

**FIGURE 1.** Channel Display in the Profile Window

This is the way that the channel was previously displayed. Notice the stair steps.

The option to smooth this channel is in the Profile Window Setup dialog. Please note, however, that this

option does not work with a matrix file that's used as a template. If you want to smooth out a MTX template in DREDGEPACK®, choose a higher resolution for your MTX design.



**FIGURE 2.** Smooth Channel Profile Option in the Vessel Setup Dialog

