



# Setting up a Digi Connect Port for Remote Displays

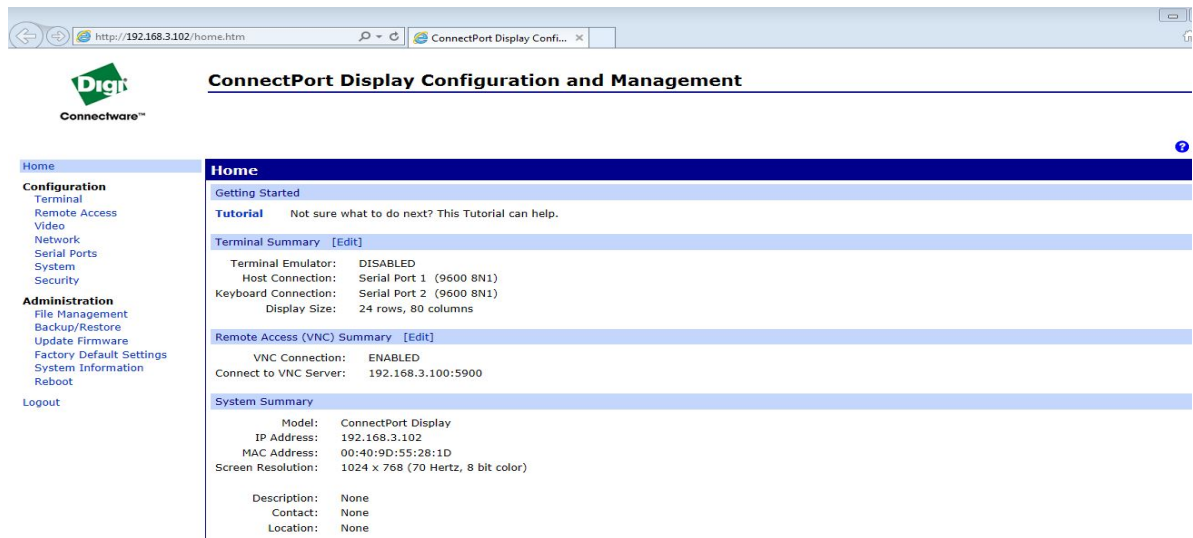
By Bob Glover

It can be necessary at times, to setup a monitor in an area that is not easily accessible for a video cable to be placed. We use this type of setup on most of our crane system installations and it can also be very useful in other marine construction applications.

The Digi connect port is a terminal emulator. Using it's built in VNC (Virtual Network Computing) software, it can remotely connect into any computer on the network and mirror its display. One of the other nice features of the Digi connect port is that there are two USB ports along with a RS232 serial port that can be used for keyboards or to add a mouse. In the following setup, we will be using the Digi port for remote display only and we are assuming that your wireless network is already functioning as expected.

1. The first step is to **install the device discovery software that is included with the unit.** This will allow the unit to be discovered on the network and the IP address displayed.
2. **You must log into the display port** to access its web interface to configure the unit for your network.

*FIGURE 1. Configuring The In The Digi Home Page. (Configuration Options Listed At The Far Left.)*



3. **Connect to the Digi port.**
  - a. **Open a web browser page from any computer that is on the network.**
  - b. **Enter the IP address of the connect port.** This should be the IP address displayed when the unit was discovered using the Digi software.

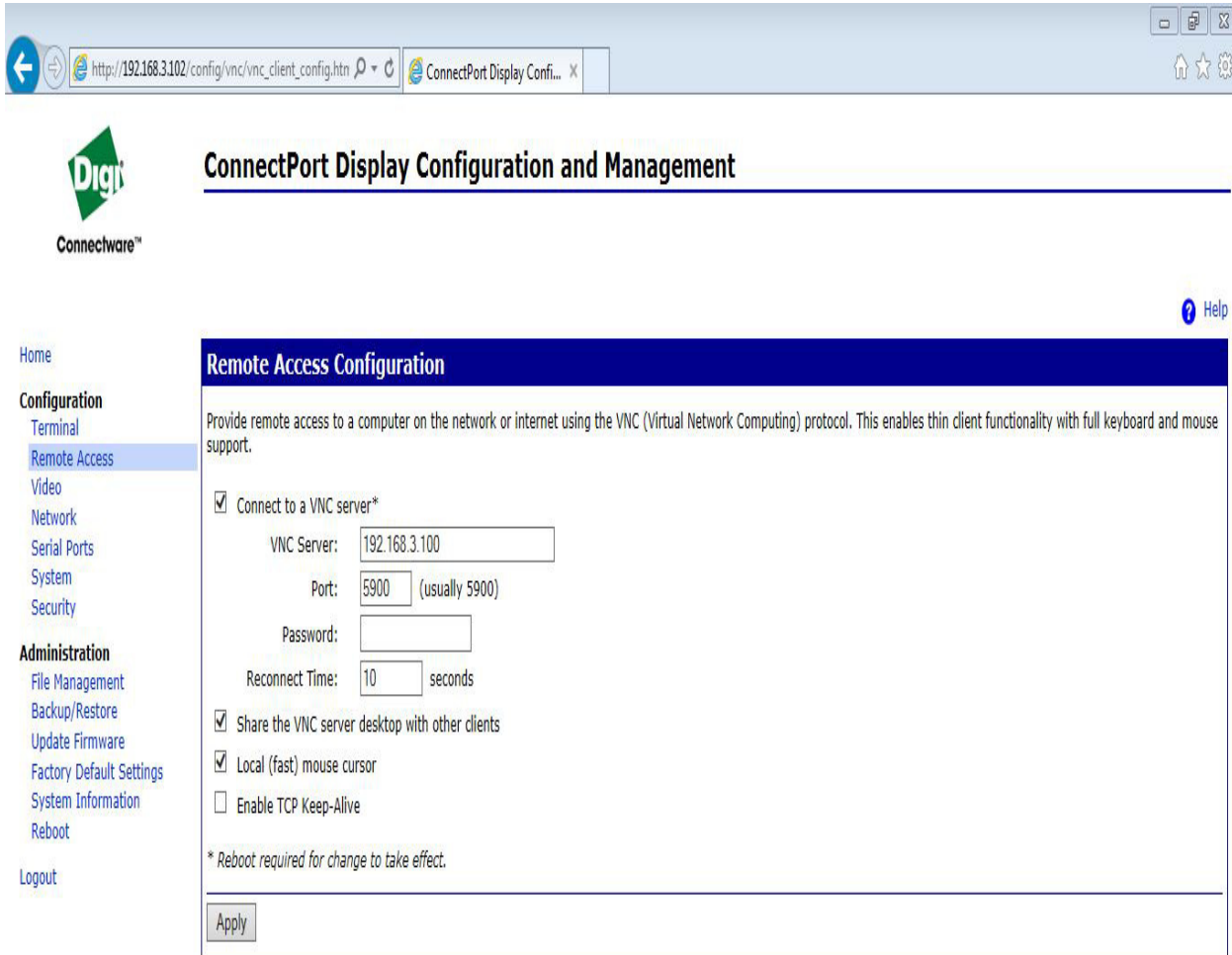
The Video and the Remote Access pages are where the VNC is configured.

## *REMOTE ACCESS PAGE*

The Remote Access page is where the Digi port is assigned an IP address to which it will connect using VNC. In Figure 2, the IP address is 192.168.3.100.

**Note:** VNC server software must be installed and running on the host machine. There are many free VNC packages available for download. We have found Tight VNC (<http://www.tightvnc.com/download.php>) to work very well.

**FIGURE 2.** Remote Access Page



Copyright © 1996-2005 Digi International, Inc. All rights reserved.  
[www.digi.com](http://www.digi.com)

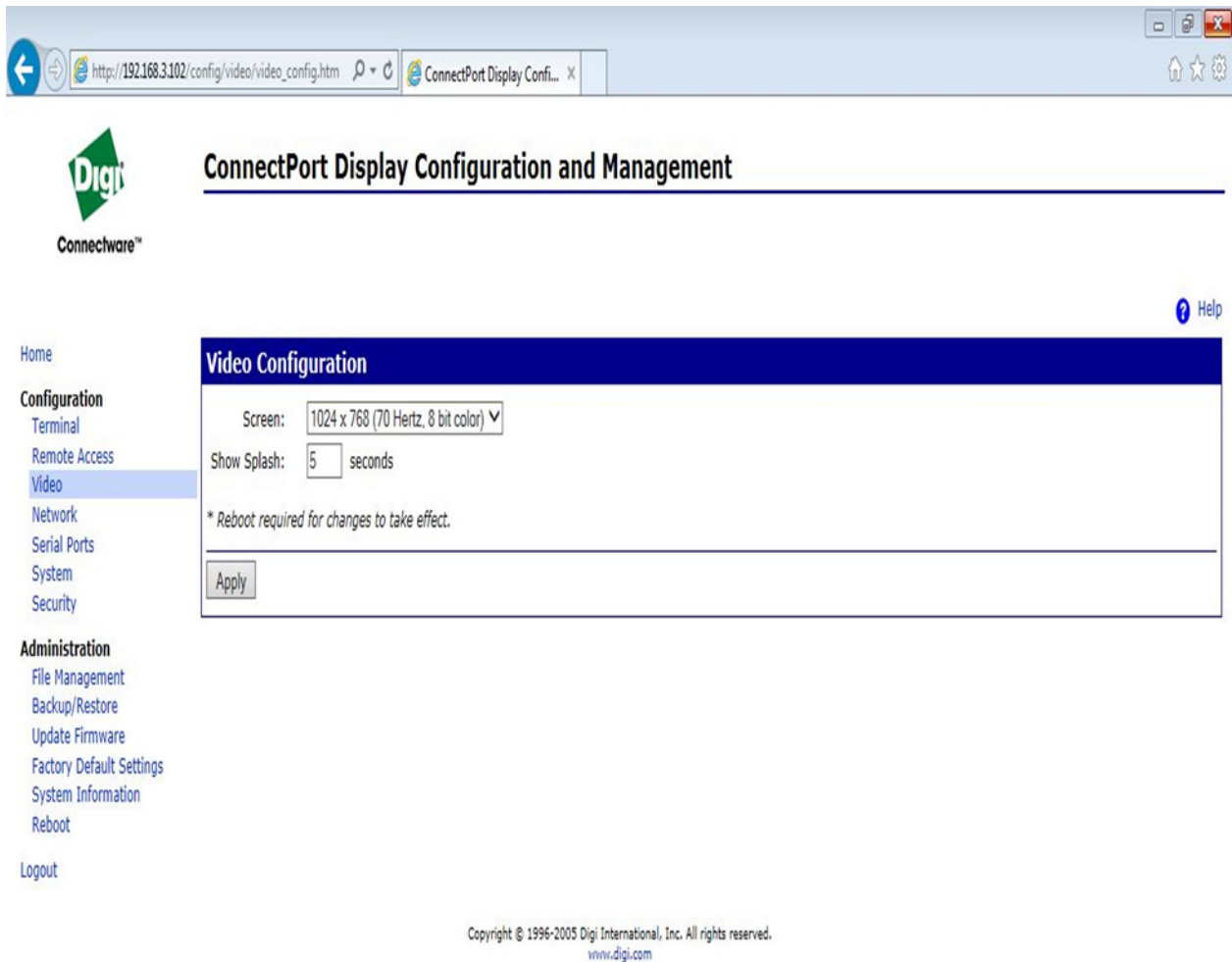
## DIGI VIDEO SETUP

From the Video Configuration window, the video resolution can be adjusted to better mirror the computer that you wish to remotely view. For best results and faster refresh rates, the computer to be viewed should be running in Windows® Basic Mode.

Now, with the Digi connect port correctly configured, the unit on the network, and VNC software running on the host computer, we can have a remote monitor located anywhere

within the network. Using the onboard USB ports, a mouse and keyboard can be connected to allow the remote user to have control of the host computer.

**FIGURE 3.** Video Configuration



Should you have any further questions regarding the setup and configuration of the Digi Connect port, please feel free to contact [help@HYPACK.com](mailto:help@HYPACK.com)