



# HYPACK® 2014:

Our Commitment to Provide Our Customers with the Best Features and Tools

By Lourdes Evans

After months of development and testing, HYPACK® 2014 will be introduced at our HYPACK Training Event in January 2014 and available for release in February, 2014. We are very excited about this new version.

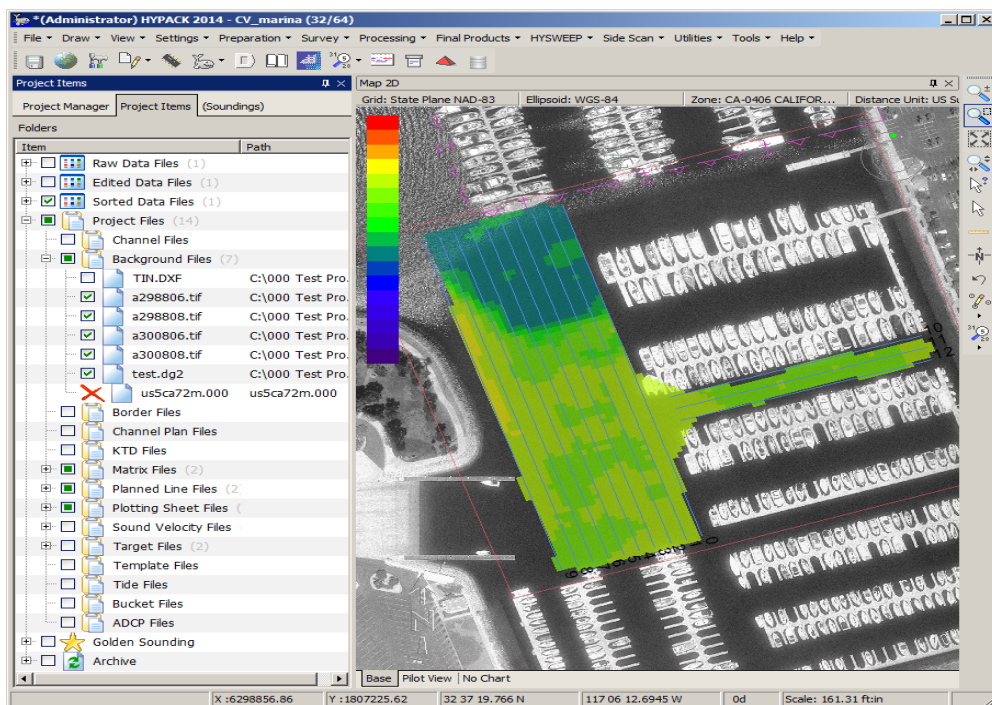
This release demonstrates both our commitment to be a leader in the hydrographic and dredging industries and our continuing efforts to provide our customers with the best features and tools to give them an ongoing competitive advantage as new equipment and technologies become available. The continuous feedback we receive from our customers and partners provides a tremendous pool of enhancement ideas that constantly improve our software. We value the input we receive, and we have set up the following e-mail address, [feedback@hypack.com](mailto:feedback@hypack.com), to more easily enable you to send your comments, questions and ideas to us. *Because when you ask we listen!!!*

The ongoing theme in HYPACK® 2014 seems to be “automate and simplify”. The following are the major enhancements in HYPACK® 2014.

## ***NEW HYPACK SHELL LOOK***

The HYPACK® Shell has undergone a facelift. The program has more of a web base feel and navigation through it is easier.

**FIGURE 1. HYPACK® 2014 Interface**



---

---

Few of the great options include:

- Drag-and-drop data files to the appropriate editor
- Easy access to the Project Manager and Colors dialog
- Multi-selecting files
- Automatically get maps from web servers

---

## ***AUTOMATIC BACKGROUND SEARCHES***

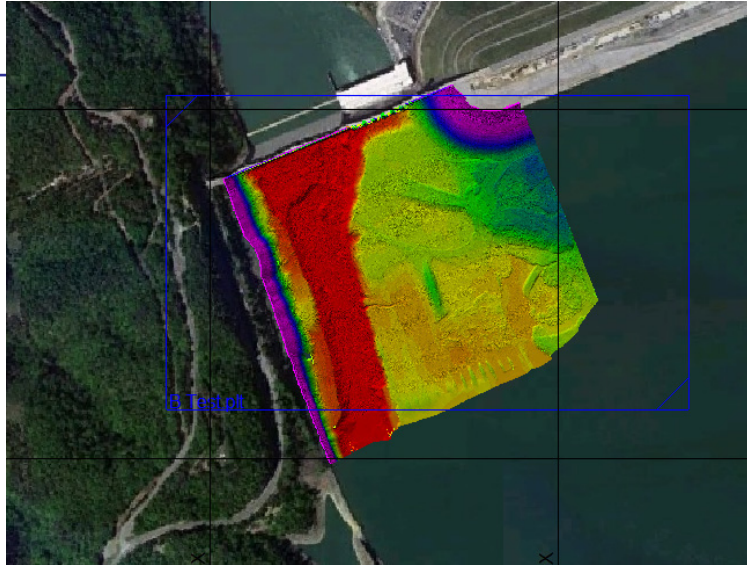
***FIGURE 2.** Sample Chart  
Downloaded from an Internet Server*

The HYPACK® shell can automatically go out to web map servers to get your background files!

- **USA:** Hi and Lo Resolution Maps from the USDA.
- **Outside USA:** Low Resolution Maps

You will just have to set the area limits (zoom the HYPACK® Shell to an appropriate scale and click [Set Limits] in HYPACK® 2014) and then, provided they have an

Internet connection, available imagery will be automatically downloaded. The routine will also be able to access other map servers, provided you have the correct permissions.

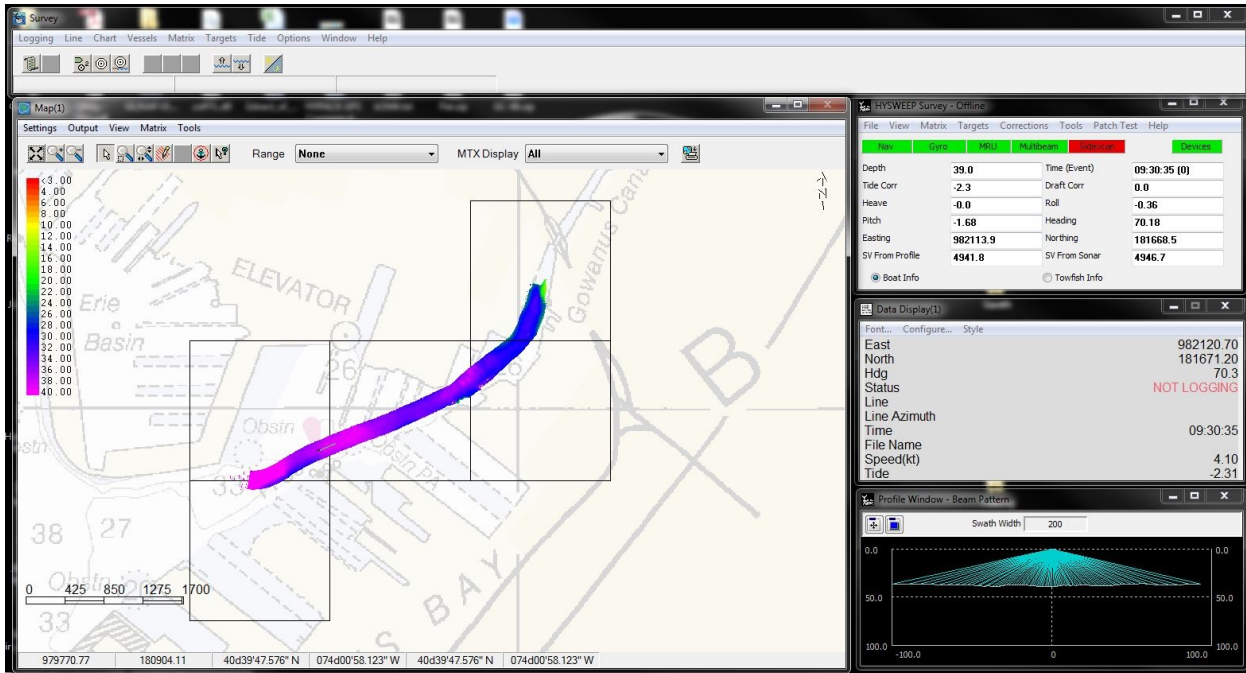


---

## ***AUTOMATIC MATRIX CREATION IN HYPACK® SURVEY***

In HYPACK® 2014, we automatically create MTX files “on-the-fly” to show your multibeam coverage, regardless of where the vessel transits. No need to create your matrix in advance.

**FIGURE 3. On-the-fly Matrix Display**



## **A NEW MAGEDIT PROGRAM**

After years of using our HYPACK® SINGLE BEAM EDITOR to process the magnetometer data, we finally decided it was time to improve this area. With the assistance and input of the French Navy, we have developed a new magnetometer editor called MAGEDIT (Magnetometer Editing). Our new MAGEDIT program is a standard tool included in HYPACK® 2014. It provides additional enhanced capabilities to process your magnetometer data.

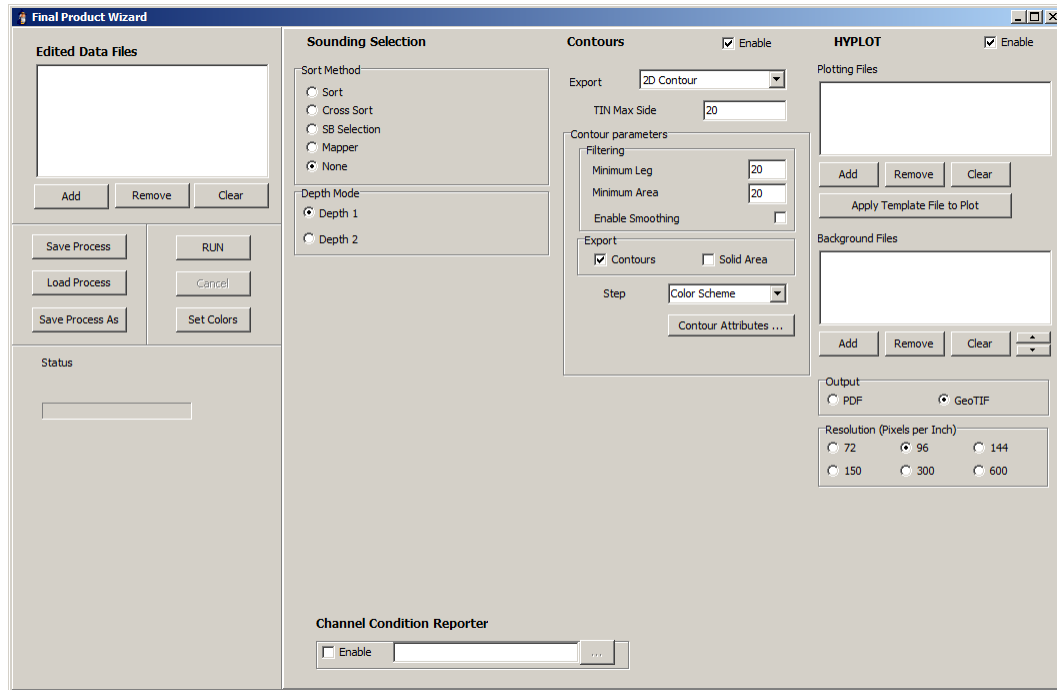
Designed specifically for editing of magnetometer data, the MAGEDIT program supports:

- Stand-alone magnetometers.
- Stand-alone magnetometers with IGRF corrections.
- Sea magnetometer with Shore Based magnetometer, both with IGRF corrections.

The program calculates diurnal anomalies and creates an Edited ALL format file that can be plotted or exported using the standard HYPACK® programs.

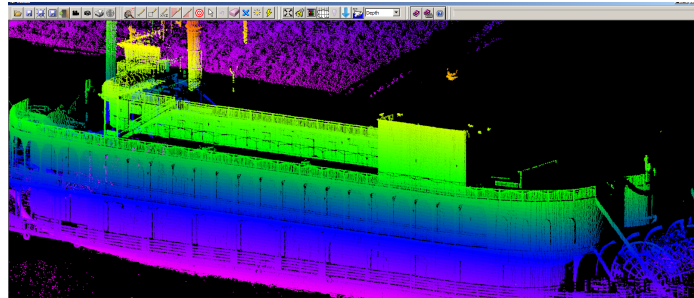
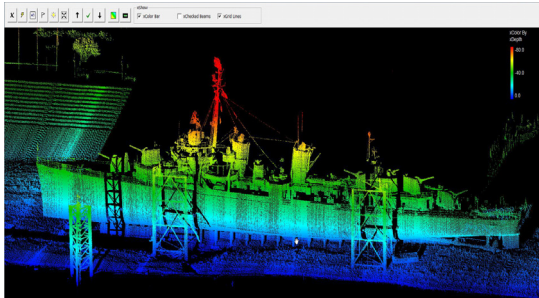
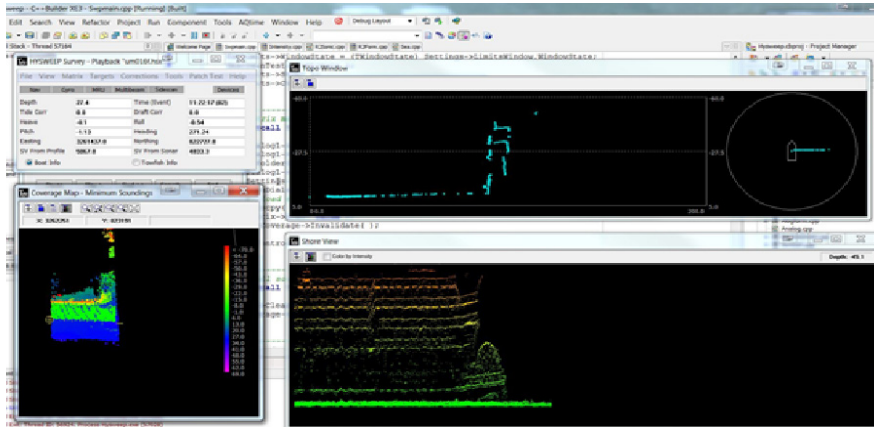


**FIGURE 6. Final Products Wizard**



## ENHANCED TOPOGRAPHIC LASER SYSTEMS SUPPORT

This is probably my favorite enhancement in 2014. We are no longer restricted to the 1440 point limit. This allows us to log and display the data recorded by multibeam and laser scanners simultaneously and create spectacular 3D images in real time.



---

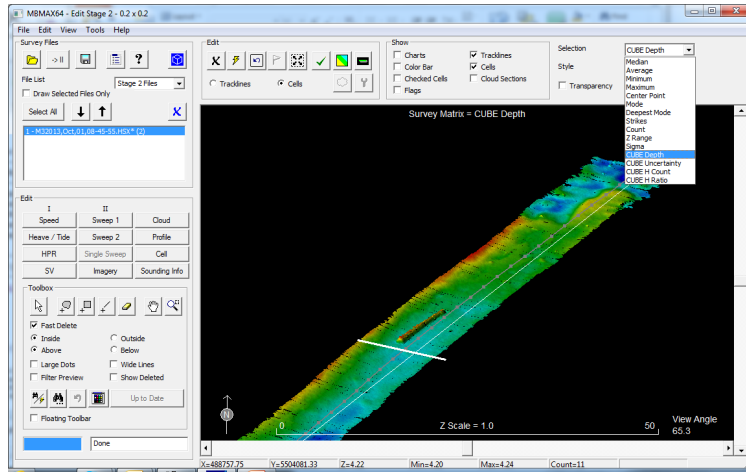
---

## ADDITIONAL FEATURES

Some additional features in HYPACK® 2014, include the following:

- MBMAX-64 with Integrated CUBE

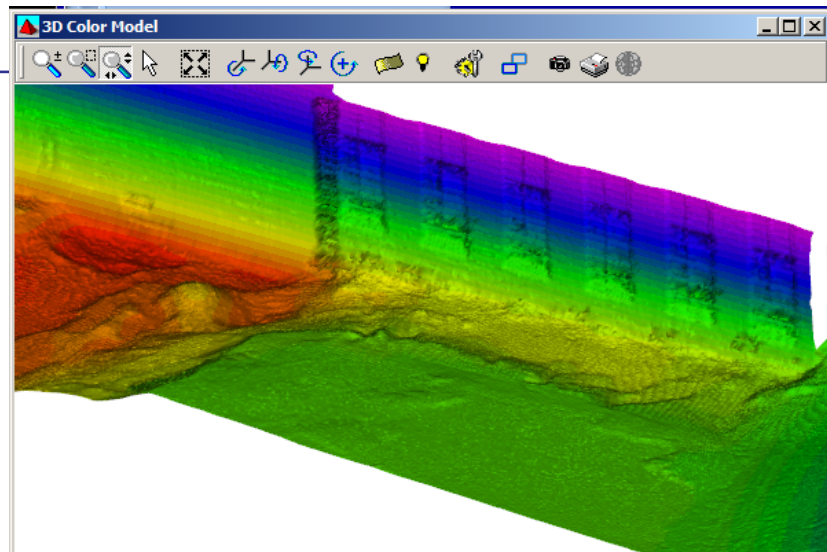
**FIGURE 7. MBMAX64 with CUBE**



- 3D TIN Adjustment for viewing vertical structures and 64-bit TIN MODEL.

**FIGURE 8. 3D TIN Adjustment**

- New routines for marine construction
- An integrated Hydrographic Database
- New drivers in HYPACK® – Sonardyne, Novatel
- New drivers in HYSWEEP® – dual head logging for EM2040, R2Sonic and MB1; added Klein3500, Imagenex DT100



The **HYPACK® 2014** release CD will be distributed in February 2014 to all users subscribed to our HYPACK Maintenance Plan and it will also become available for downloading in our website. For additional information on HYPACK® you can visit [www.hypack.com](http://www.hypack.com) or contact [sales@hypack.com](mailto:sales@hypack.com). To check your Maintenance Plan status or to renew it, please contact [mp@hypack.com](mailto:mp@hypack.com).