



HYPACK® Project Manager

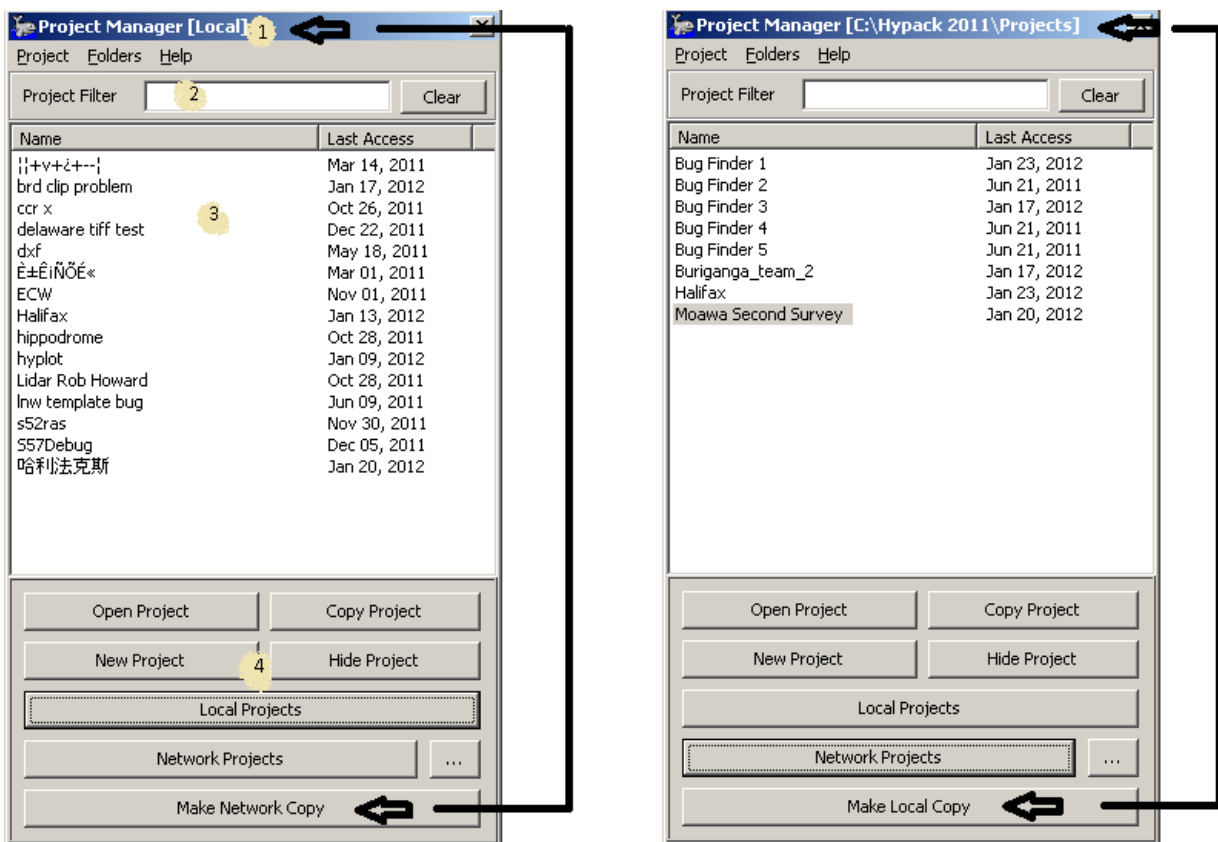
By Bill Bergman

The Project Manager makes it easy to perform all the common operations needed on a HYPACK® Project.

A **project** is a folder in the file system with a few special naming requirements, and a few minimum required files existing in the folder. Groups of projects are managed by storing them all in a common directory. Your HYPACK® install location will always contain one of these directories. Its name in the file system is 'Projects' and is treated in the Project Manager under the pseudonym 'Local'. There is also support for the concept of one or more 'Network' project locations. This points to another directory containing a group of projects. This directory can reside on your computer or point to any accessible location on your network.

The picture below shows the state of the Project Manager when viewing local projects (left) and network projects (right). The arrows show how the user interface differs in these cases. The Make Network/Local copy button provides a mechanism to transfer the highlighted project between the two project locations.

FIGURE 1. Project Manager—Local Projects (left), Network Projects (right)



(1) The active project directory is displayed in the caption. Local projects always display as Local. Network locations display the full path to the project folder.

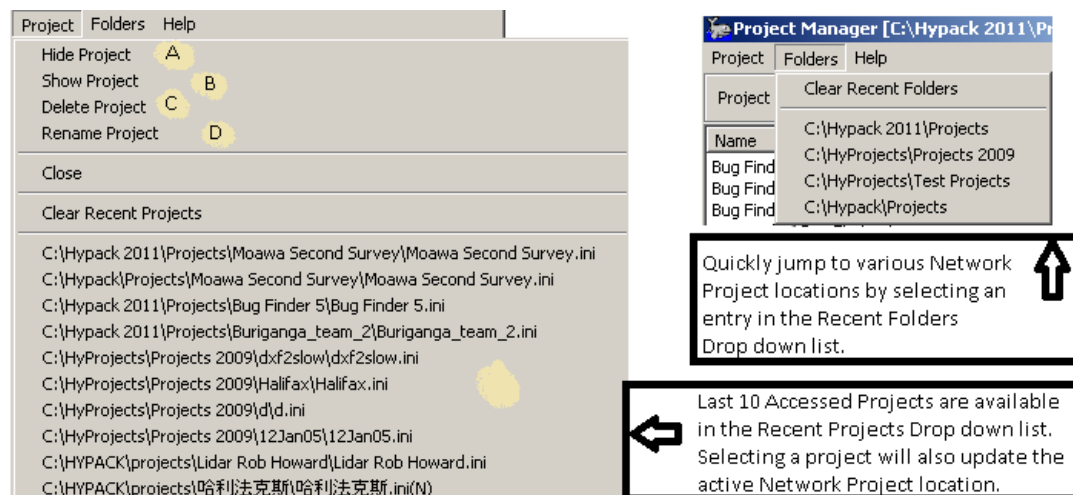
(2) The Project filter aids to quickly find a project of interest by partial name matching. This can be a big time-saver when jumping amongst hundreds of projects and a well-defined project naming scheme is in place. To disable the filter, clear any text in the Project Filter field or press the Clear button.

(3) All available projects in the selected directory are listed here. Highlight a project to perform further operations. The list can be sorted alphabetically or by last access time.

(4) Common Project options are listed here for convenience:

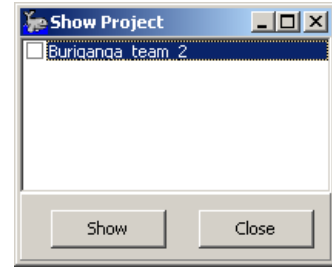
- **Open Project:** Opens the highlighted project. You will be prompted to save any changes in effect.
- **Copy Project:** Creates a new Project using the highlighted project as the source. No data files are copied into the new project.
- **New Project:** Creates a new, empty project. Default parameters, such as geodesy settings are copied from HYPACK® defaults.
- **Hide Project:** Makes the highlighted project no longer appear in the list. More detail can be found below.
- **Local Projects:** Sets the active directory to the projects folder in your HYPACK® install location.
- **Network Projects:** Sets the active directory to the directory associated with the network. Use the ellipses '...' to make this association.

FIGURE 2. Project Options Available in the Menu:



(A) The **Hide Project** button causes a project folder to no longer show in the project list. It hasn't been deleted, but renamed on disk in such a way that the Project Manager can no longer 'see' it. If you hide the active project, it will be closed and HYPACK® will be in a no project selected state.

(B) The **Show Project** button will open the Show Project dialog. Any project in the active directory that has been previously hidden will be listed. Place a check mark next to the project you wish to make visible again, and press the Show button.



(C) The **Delete Project** button will move the highlighted project into your recycle bin. You will need to go into your recycle bin, find the project folder, and click restore if you wish to recover it. If you delete the active project, it will be closed and HYPACK® will be in a no projected selected state.

(D) Choose **Rename Project** to change the name of the highlighted project. The dialog which accepts the new name automatically prevents the entry of an illegal name. Since a project resides in the file system, the rules for a legal file name are the rules for a legal project name. The currently active project in the shell can not be renamed. This can be worked around by opening another project, renaming the desired project, then opening it.