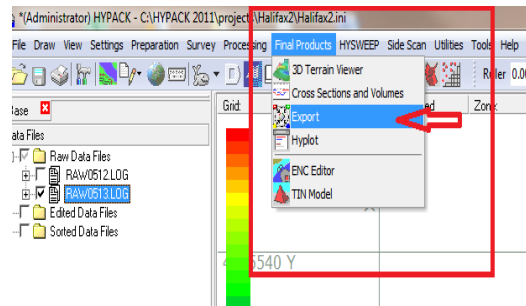




Export of Track Lines to Google Earth

by Roy Goyette

In version 2011 there has been a change to exporting track lines to Google Earth™. You used to be able to right-click on the file in the Data Files area and select Export to Google Earth™. While this still works for some features of the Google Earth™ export, this no longer works for track lines. The Export to Google Earth™ feature has been moved to the Export program which you will find in the Final Products menu.

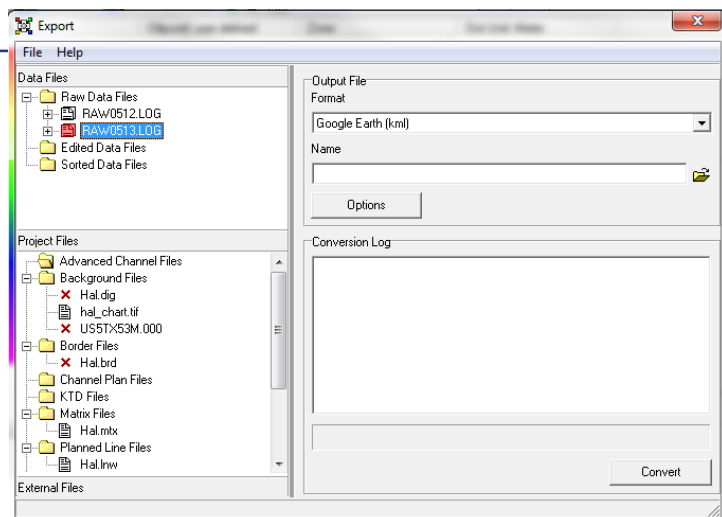


To export track lines to Google Earth™ without the soundings:

1. **Configure the main HYPACK® Shell to show only the track lines.** To accomplish this you must disable the sounding display.
 - a. Right-click on the Data folder for the data set you want to export. A menu will appear that includes 'Enable Soundings' and 'Enable Tracklines'. With these options, each click toggles the option on (checked) and off (no check).
 - b. If the 'Enable Soundings' option is checked, click the option to remove the check.
 - c. If the 'Enable Tracklines' option is not checked, click the option to check it.
2. **Open the EXPORT program** by selecting FINAL PRODUCTS-EXPORT.

FIGURE 1. Sample EXPORT Program

3. **In the Output File field, select Google Earth™.**
4. **Name your output file.**
 - a. **Click on the File Open icon** corresponding to the Name field.
 - b. In the Save As dialog, **give your output file a meaningful name.** You can also change the directory or folder to which the item will be saved.
 - c. **Click [Save].**



5. **Click [Convert]** and the file is created. When you exit the EXPORT program, it's ready for Google Earth™.

FIGURE 2. Sample Track Lines Exported to Google Earth™

