



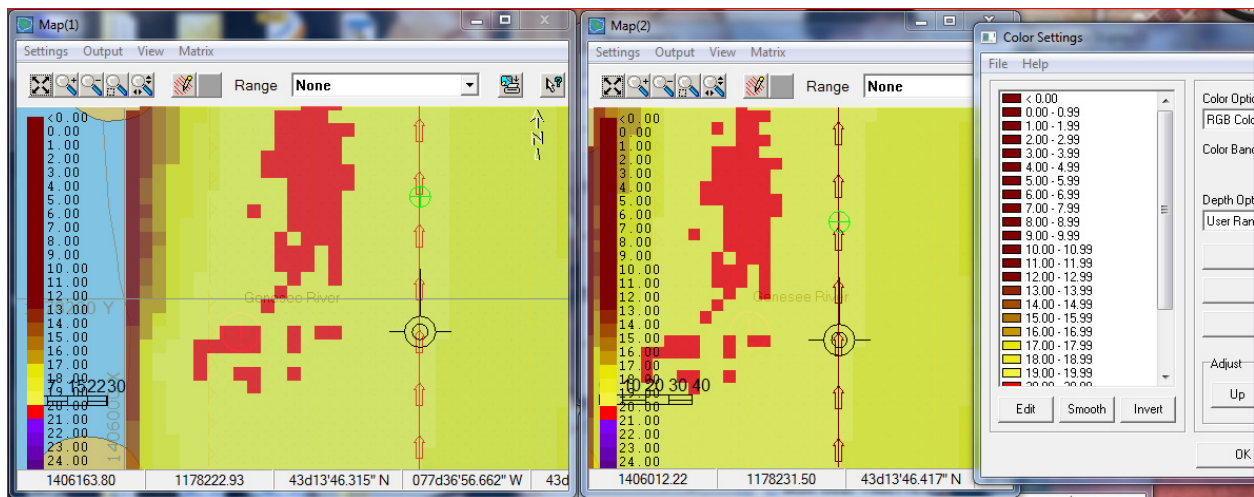
Different Matrix Colors in HYPACK® SURVEY Maps

By John Lindberg

With the ability to display multiple map screens in HYPACK® SURVEY, you can also configure each map screen differently. For example, the surveyor may want to display just planned lines at a “north up” map orientation, while the boat driver may also want to display a back ground chart with the map orientation in “Line Up” mode.

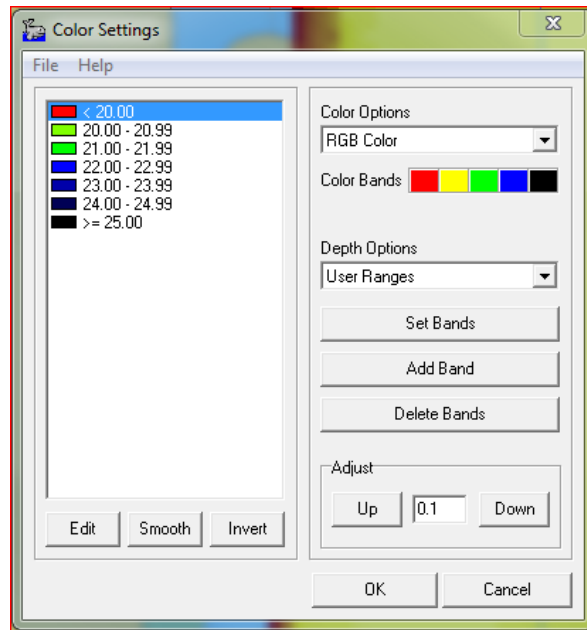
One user wanted to display different matrix colors on two maps. He wanted to show a range of depths on one map, and on the second map display any depth above the project depth a specific color. This is how you do it:

FIGURE 1. Both Maps Using the Same Color Scheme



HYPACK® SURVEY (and any other HYPACK® program that can display depths by color) reads the “color.hcf” file stored in your current project folder. You define these colors in the Color Settings dialog.

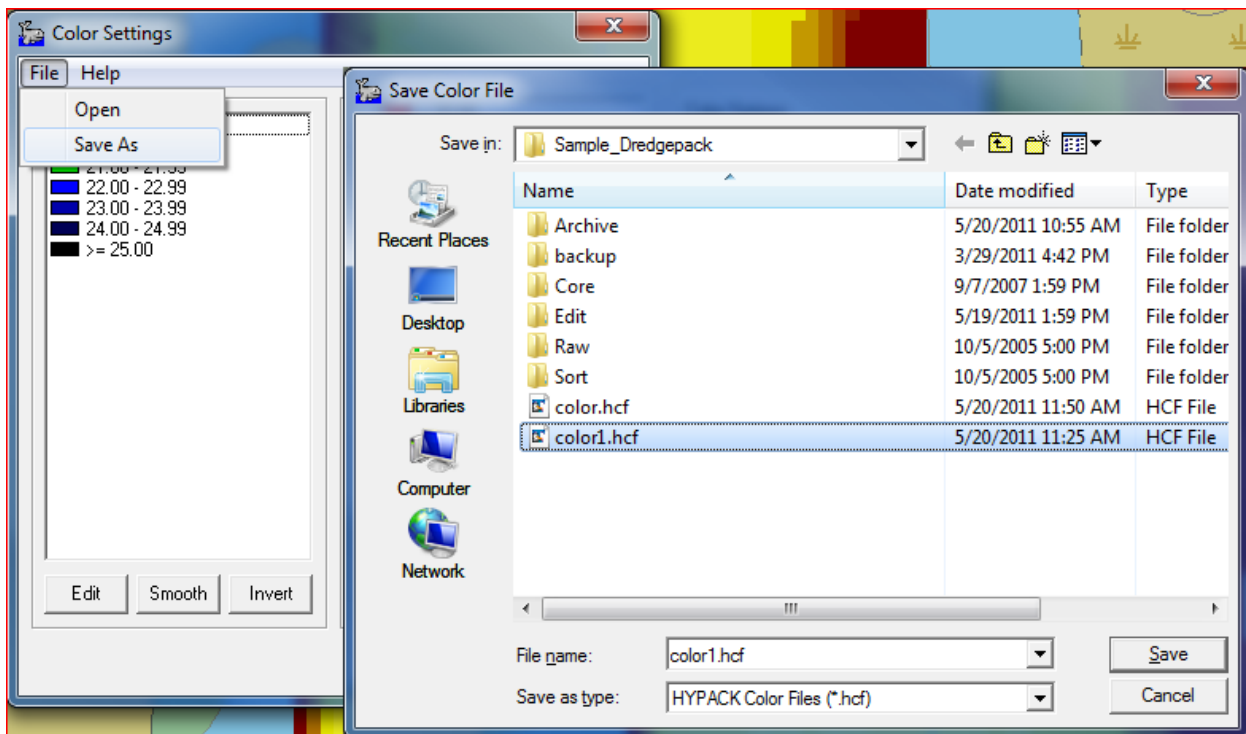
FIGURE 2. Defining your Depth Colors in the Colors Dialog



To change the matrix colors for Map 2:

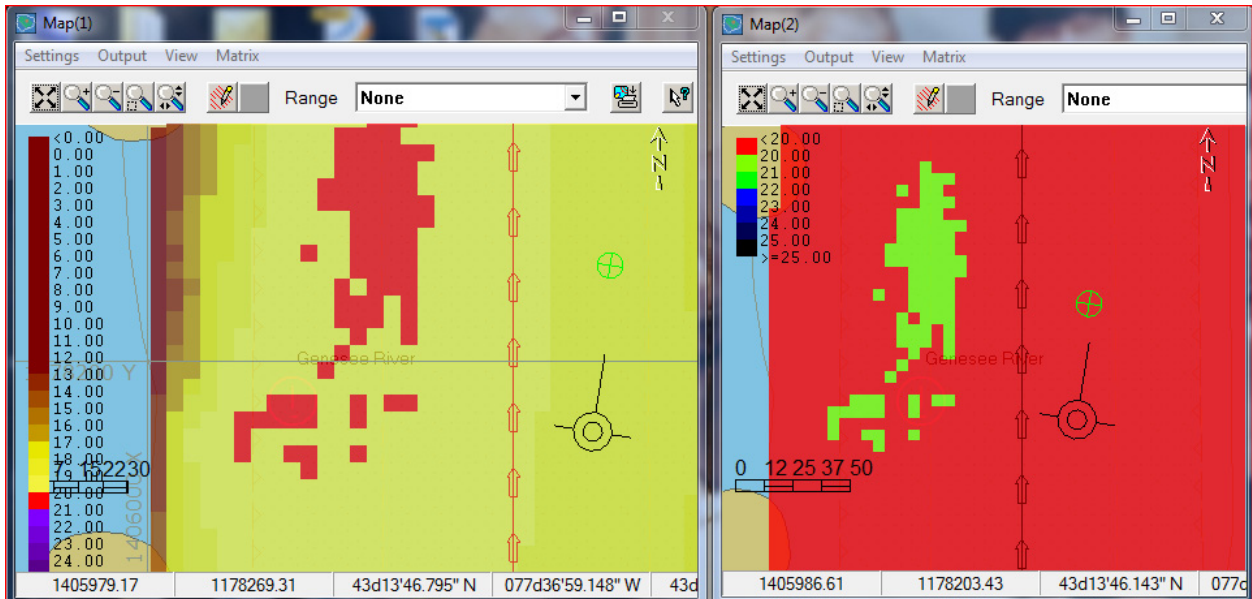
1. In HYPACK®, select **SETTINGS – SOUNDING COLORS**.
2. Set your color ranges for map 2.
3. Select **FILE – SAVE AS** and name the file “color1.hcf.”

FIGURE 3. Creating a Second Color File



4. **Using [CANCEL], close the Color Settings dialog** so you don't change the original color palette, as these colors will be used for Map 1. (The color.hcf file stores the color settings which are used throughout your project for all the different program routines.) You should now be able to go into HYPACK® SURVEY or DREDGEPACK®, and these settings will reflect your new color schemes.

FIGURE 4. Two HYPACK® SURVEY Map windows using Different Color Schemes



To change the matrix color of Map 3 simply create a “color2.hcf” color file. For Map 4, create a “color3.hcf” color file.