



The Simple Question: Matrix as Depth Record vs Channel

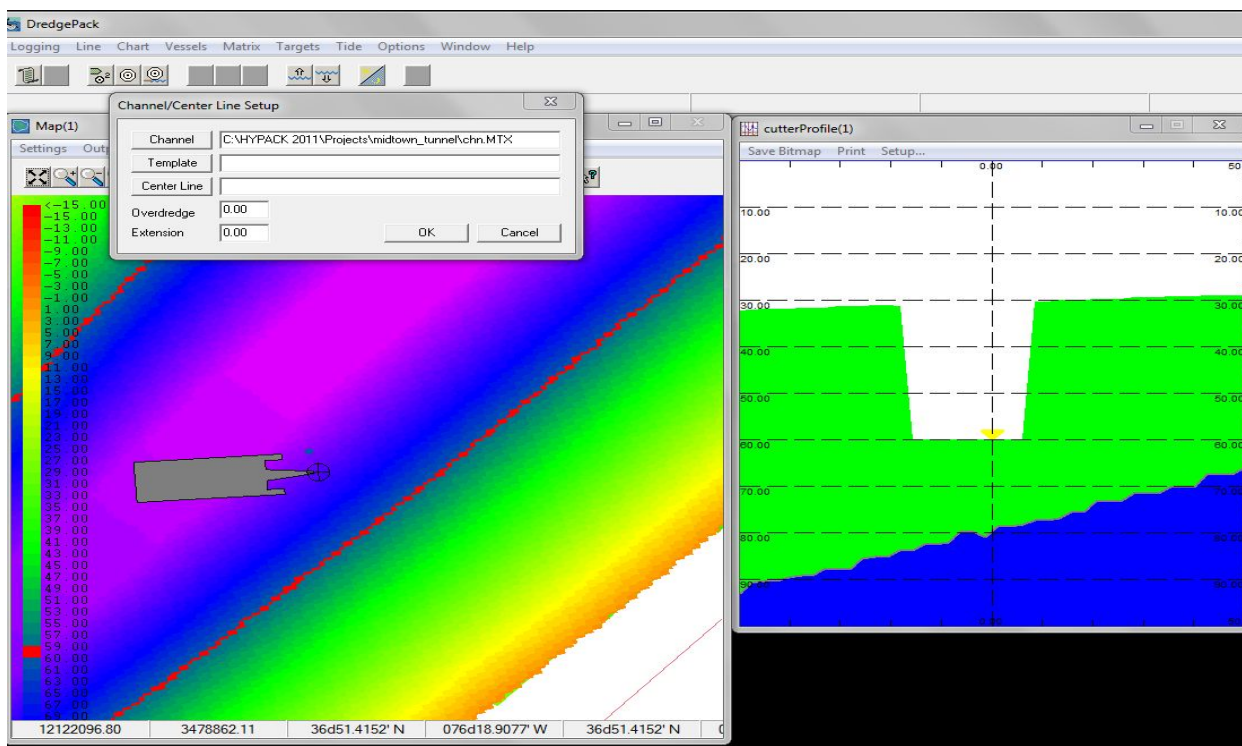
By Jerry Knisley

Working in Technical Support at HYPACK means never knowing just what questions you are going to receive from day to day. Some days you get the easy ones that you can just pop off the answer to without much thought, or sometimes it the ones that make you scratch your head and you work on it for hours. Most of our customers like to start their question by letting me know that this will be a "simple one", and sometimes they are just that; however it's also the simple ones that somehow escape you.

I have had two clients call in the last few days with the same issue, a "simple question", but for some reason this wasn't so simple at first. Both customers were reporting that their matrix wasn't updating in the DREDGEPACK® map window, although when looking at it in HYPACK® shell they could clearly see that the matrix had indeed been updated. The profile window was also updating as expected for both clients. At first we went through all of the normal yeses and nos regarding matrix options to make sure there wasn't a box checked accidentally that would be preventing the update of the matrix. We checked in HYPACK® HARDWARE to make sure that a device was selected to update the matrix and, after a few more checks, I felt pretty sure that we weren't missing anything obvious. So the simple question isn't so simple after all.

One of the great features of DREDGEPACK® is that the program allows you to use a matrix file as your channel in order to see your profile. Here lies the answer to our question of why the matrix did not appear to be updating in the DREDGEPACK® map window.

FIGURE 1. Using a Matrix as your Channel in DREDGEPACK®



In this case both customers were using a matrix file to display their profile window and from the above screen capture it can be seen that the profile is indeed updating while the matrix in the map window is not. I must admit that this was a head scratcher for a few minutes, everything was setup correctly and yet no matrix update.

Here is the answer and yes it was a simple one in the end. When a matrix is loaded as a channel in order to display a profile, it looks just like any matrix that would be displayed in the map window of DREDGEPACK®. We must remember that this matrix is functioning as a channel, and channels can be displayed in the map window. Time to open the Layer Manager and see if the channel is displayed and whether it is on top of our survey matrix.

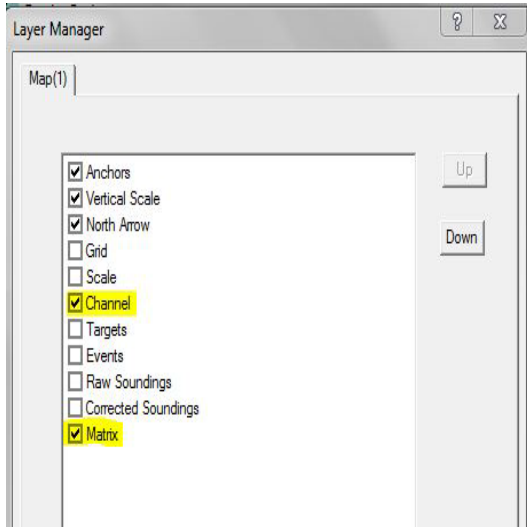


FIGURE 2. Layer Manager

You can see in Figure 2 that, in this case, the channel is indeed being displayed and it is also on top of our depth matrix. The fix, in this situation, is just to click off the channel or move the matrix above it in the list of layers to be displayed.

Figure 3 shows the map window after the channel has been moved beneath the matrix in layer manager. The matrix in the map window has been updating the entire time just as it should have been but we were unable to see it due to the channel, in this case a matrix, layered over it in the map. Sometimes a simple question can really make you think.

FIGURE 3. Setting the Depth Matrix Above the Channel Matrix

