



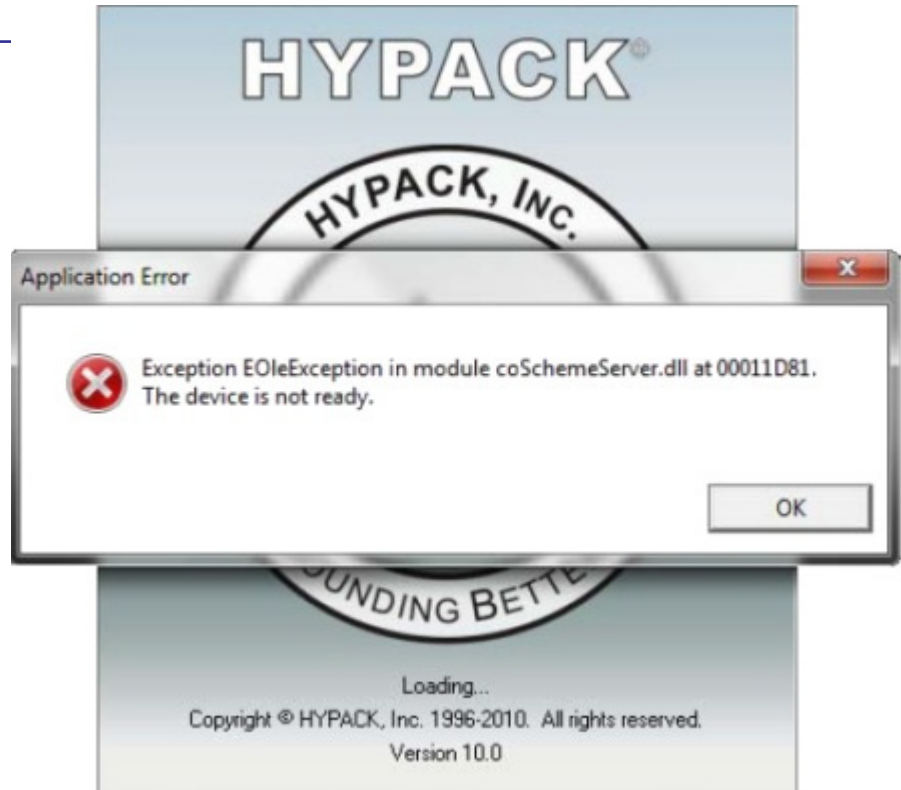
coSchemeServer Start Errors

By John Marinuzzi

Have you seen the error shown in Figure 1?

FIGURE 1.

Chances are that if you have, you already called us and got the fix. There has been an increased occurrence of these errors coming in lately, and, while we haven't quite figured out what causes it, we do know that it is external forces, most likely a Windows® update. A system file for reading XML files, which is how a scheme file is stored, is getting updated and breaking compatibility with the XML reader built into the



SchemeServer. SchemeServer is an internal unit that keeps track of your project colors and fonts.

What we do know, however, is how to fix it. The fix is as simple as downloading a file from Microsoft and reinstalling it. The file you need can be found here:

<http://www.microsoft.com/download/en/details.aspx?displaylang=en&id=15697>

If you encounter this error, please let us know about any recent changes to your system so we can get a better idea about what *exactly* is causing it.