



Using two Dongles at Once in 2011

By Rob Baird

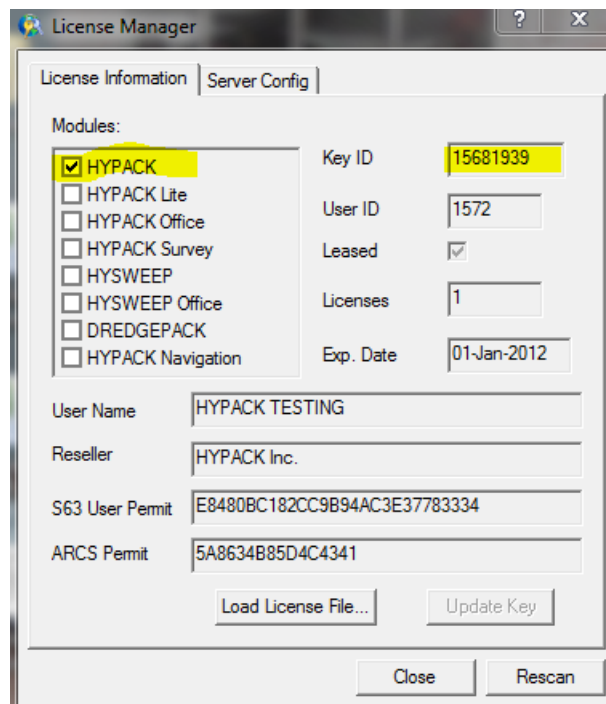
Several HYPACK® users have called Support recently with the same dilemma. They were concerned that when using multiple HYPACK® dongles simultaneously, only one would be recognized, therefore limiting HYPACK® functionality.

Thankfully, this is NOT the case. The alarm was raised when the users would open License Manager. With the new License Manager (Keyview.exe), only one of the dongles is shown in the display as checked, even though both dongles (keys) were in place.

Previous versions of the License Manager WOULD recognize multiple dongles at once, but that is NOT the case with HYPACK 2011.

In Figure 1, the screen capture was taken of the license manager when BOTH a HYPACK® and a HYSWEEP® dongle were inserted at the same time:

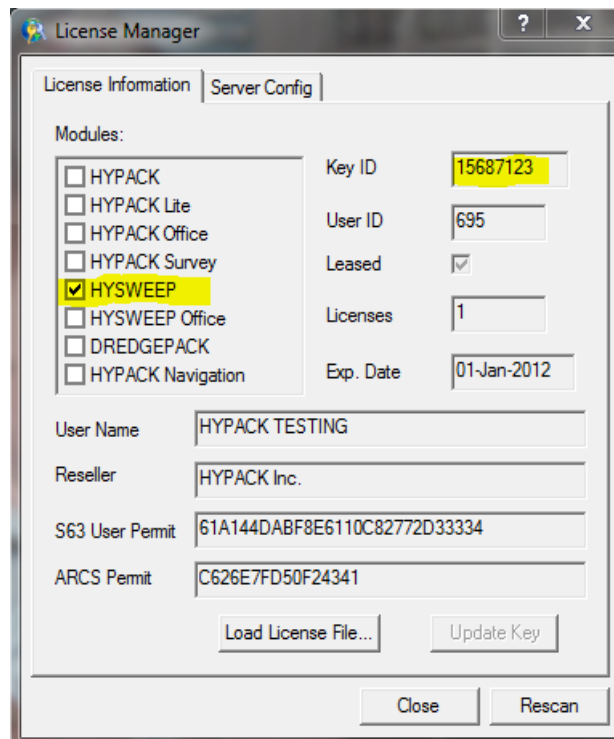
FIGURE 1. Only HYPACK is checked when both HYPACK® and HYSWEEP® keys are present



Note only HYPACK® is checked, despite both having both keys in the USB ports.

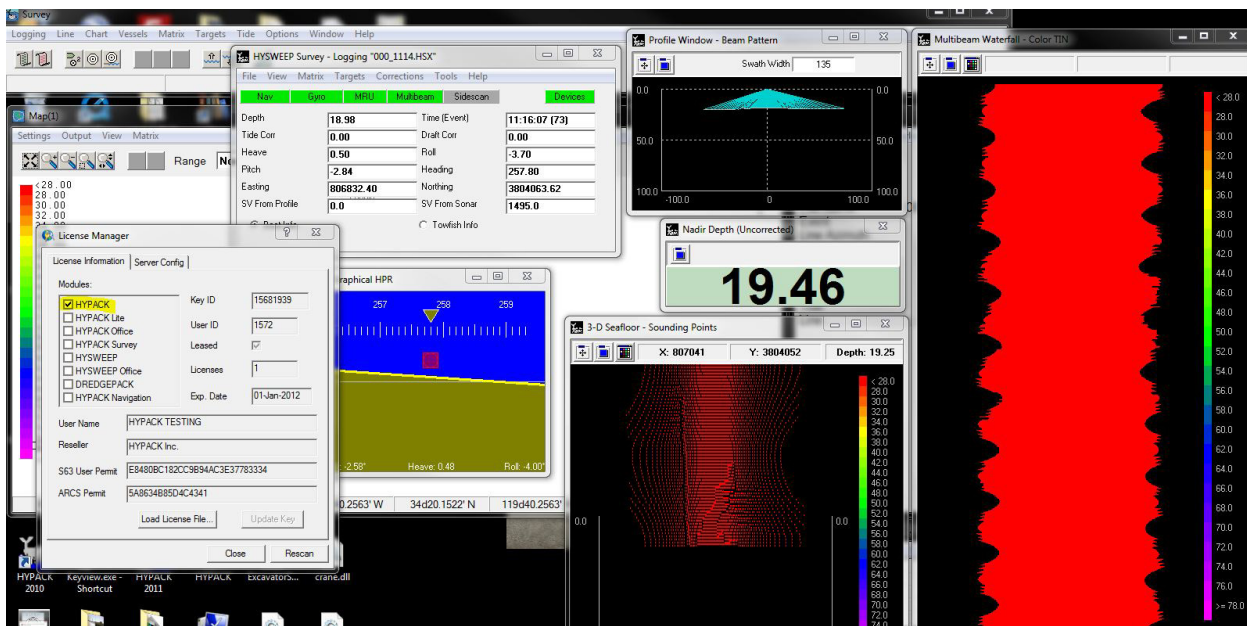
After reversing the placement of the two dongles in their respective USB ports, we took another screen capture of the License Manager:

FIGURE 2. Only HYSWEEP is checked, despite both dongles being inserted



To further illustrate that there is no issue with multiple dongles being used simultaneously, we have provided the following screen capture:

FIGURE 3. HYSWEEP is open with a project loaded. License Manager shows only HYPACK is checked



Note that HYSWEEP is open with a project loaded, despite the License Manager showing that only HYPACK is checked... with no HYSWEEP!

So don't be concerned when your License Manager displays only one dongle, despite multiple dongles being inserted at the same time. The program reads the USB ports in a particular order (computer-specific), and only displays that first recognized dongle.

Rest assured that when you open HYPACK®, you will have the functionality of both inserted dongles!