



HYPACK® Interfaces – Updates and News

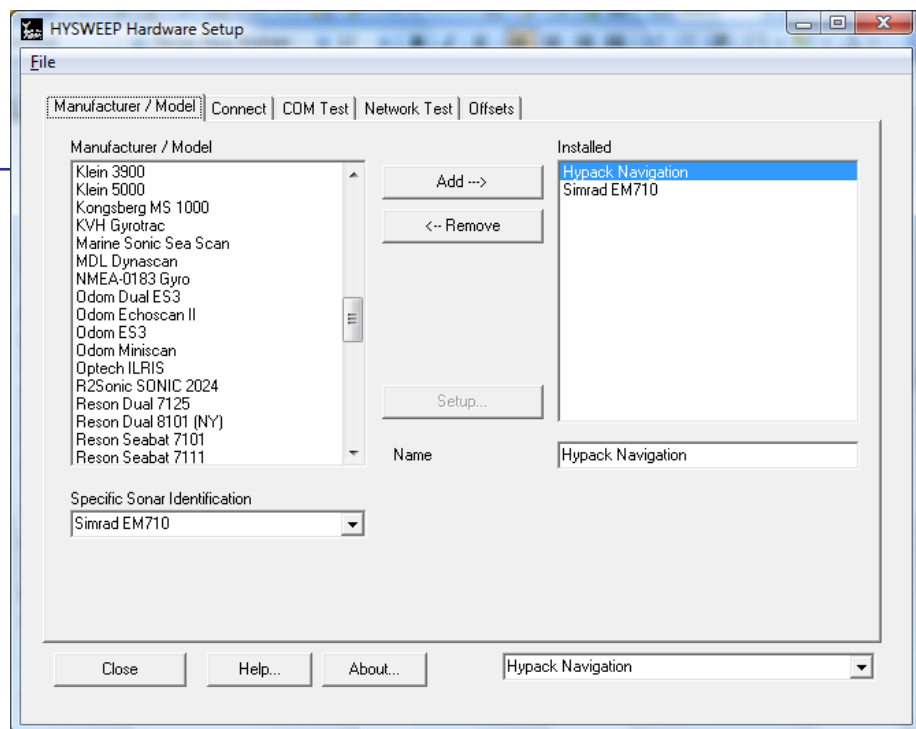
by Harold Orlinsky

One of the changes you will see in HYPACK® 2011, when compared to HYPACK® 2010, is the addition of many new sonar interfaces. During the past year, HYPACK® has worked with many of the sonar manufactures in use today, and added systems that benefit all users. Some of the new interfaces include the Edgetech 4600 sonar, Electronic Navigation WASSP sonar, Kongsberg EM2040, and the scanning Optech ILIRS system to name a few. We also updated some of our existing drivers, to take advantage of new manufacture formats; These include the Reson 7x series with added uncertainly values, Odom ES3 for use with their RTA box and the R2Sonic for use of their updated format.

All of these interfaces, whether new or old, and improvements to existing ones, are included in the HYPACK® software suite. If your Maintenance Plan is current, they are all available to you at no additional cost. This has been the HYPACK® policy – our clients are not charged for using any of the existing sonar interfaces, or incur any additional costs for using a new sonar system. For those folks interested in using these new sonar interfaces, the release for 2011 will be out shortly .

FIGURE 1. Some of the HYSWEEP® interfaces included in the release of HYPACK® 2011

We will soon begin working on features and enhancements for HYPACK® 2012. New sonar interfaces and improvements to existing ones will continue to meet the requests of our clients.



On an unrelated topic; we were asked to add the Humminbird side scan. This can already be done in HYPACK®!. Our side scan mosaicking program – HYSCAN, can read both HSX files and also XTF files. The Humminbird has a conversion utility to create XTF files from their SON and DAT files. With that easy conversion, the data can be brought into HYPACK® for processing and display.