



# Windows Manager Inside SURVEY Program

By Ivan Izaak

I'm getting the following questions from our customers regarding the windows inside the SURVEY program:

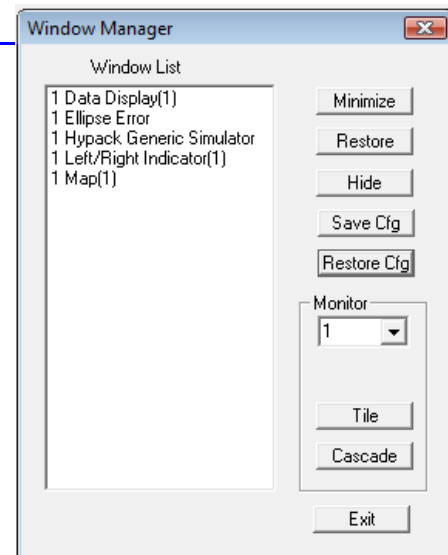
1. After I removed one of the monitors from my surveying system, some windows inside SURVEY have disappeared. How do I make them visible on my monitor?
2. I need a different set of windows and their configuration from day to day in the same project. Is there a way to have different window configurations inside SURVEY?
3. My colleague has closed some windows and changed the DATA DISPLAY settings as well as the MAP window settings. Now I need to start SURVEY in a minute but everything gets screwed!

For all such issues there is a **Windows Manager** which you can access through the **Window** menu in the main SURVEY screen.

**FIGURE 1.** Windows Manager inside HYPACK® SURVEY

You may select multiple windows in the list of available windows in the WINDOW LIST and perform the following manipulations:

- **Minimize** – minimize all selected windows.
- **Restore** – restore selected windows.
- **Hide** – if you do not want to see selected window at all on the screen.
- **Monitor** – by default all the windows will appear on the main monitor. You may select windows and assign them to another monitor. Every window in the Window List has a label to the left of its name indicating the monitor on which it is displayed. In Figure 1, all of the windows are assigned to monitor 1 in my system.
- **Tile** – Tile selected windows on specific monitor.
- **Cascade** – cascade the windows.



After you set all the windows as you like them and configure each individual window, you can save the configuration into an \*.ini file by clicking [**Save Cfg**]. By default your configuration will be saved as **SurveyWinCfg.ini** in the project folder, but you can provide another name. In this way, you can have multiple configurations for different purposes and different operators, and restore the desired configuration by clicking [**Restore Cfg**] button.