



Matrix Channel in SURVEY

By Lazar Pevac

The ADVANCED CHANNEL DESIGN program allows you to create “regularly” shaped channels and you can load such channels into the SURVEY program without any difficulties.

For more complex channels, you could opt to use the TIN MODEL program to generate your channel file. It will make channel file very quickly, but the file might be so big that it will cause the SURVEY program to become very slow and eventually crash.

For such channels, we recommend that you use the TIN MODEL program and create matrix file instead. The latest SURVEY program allows you to input a matrix file as a channel file.

FIGURE 1. Using a Matrix File as a Channel File in SURVEY

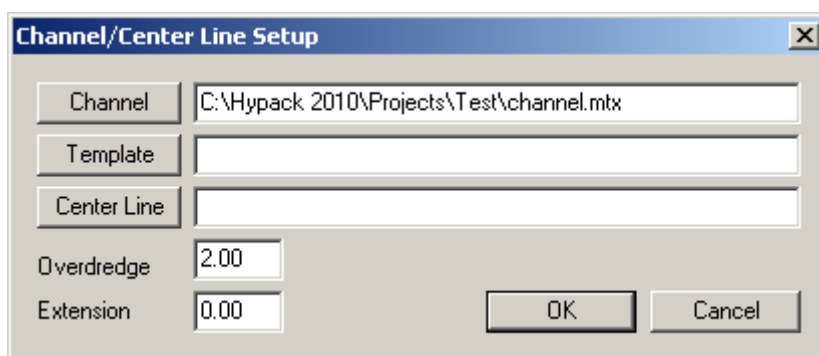
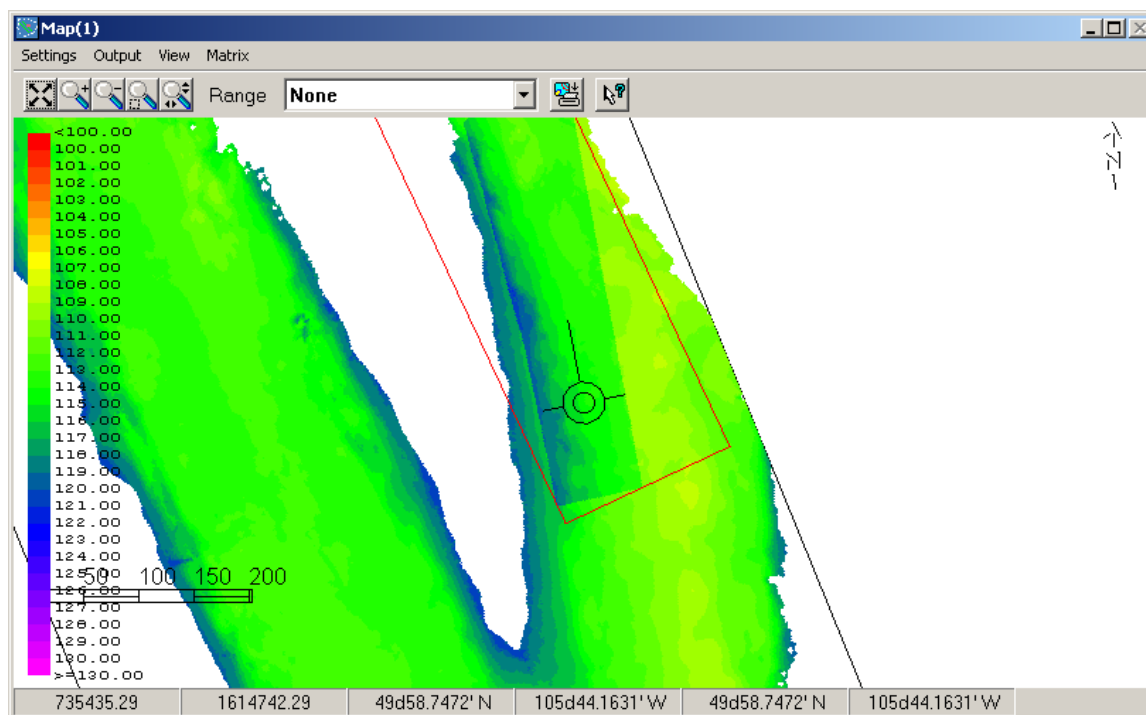
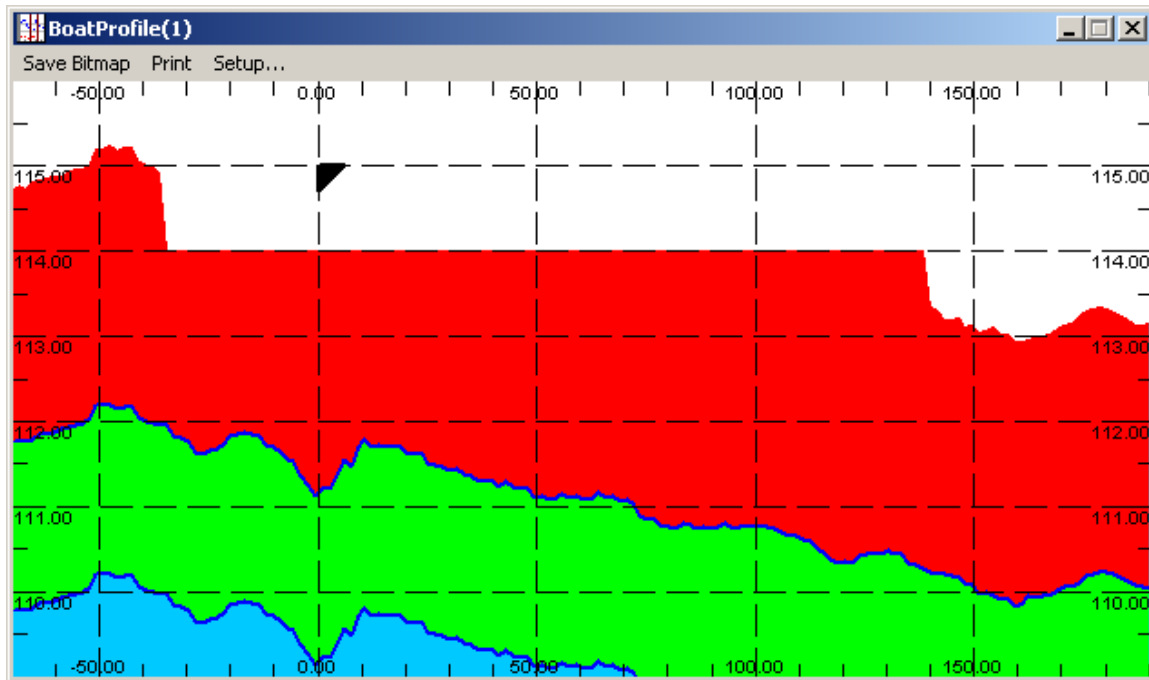


FIGURE 2. SURVEY Map Window displays the matrix (red) and the channel (black).



You can use the Boat Profile window to see your matrix with channel line and overdepth line.

FIGURE 3. Using a Matrix as a channel template in SURVEY



The Channel line is painted in dark blue. Material above the channel is in red; material in overdepth is green; material below overdepth is light blue.

NOTE: Keep in mind that this method, applied on “regularly” shaped channel, will give you an approximation of the channel. A smaller matrix cell size yields a better approximation, but it creates bigger matrix file.

For very accurate dredging, it is still better choice to use standard CHN or PLN files.