



Using XYZ Data to Make a Channel in HYPACK® CHANNEL DESIGN

By Christan Shaw

Many times users have XYZ data files that defines their channel dimensions. In these cases, you can import the XYZ data files directly into HYPACK® CHANNEL DESIGN.

For this to work properly you must have three separate XYZ files, one for each toe and one for the centerline. By using the “Import” option in Centerline, Left Toe and Right Toe tabs you can import these files to populate the CHANNEL DESIGN spreadsheet.

FIGURE 1. Importing Waypoints to CHANNEL DESIGN

This can be a handy feature if you have a CAD file that defines your channel. You can simply perform a List Points Command in CAD and save out each toe and the centerline, each to its own XYZ file, ready to take to CHANNEL DESIGN.

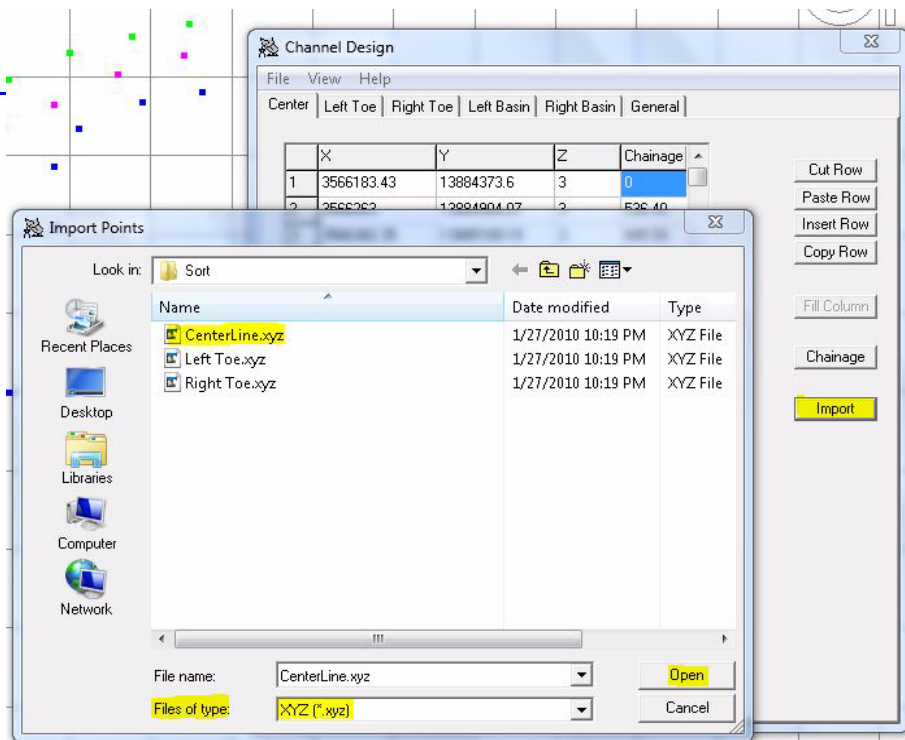


FIGURE 2. Extracted XYZ Waypoints in HYPACK® (left), Resulting Channel in CHANNEL DESIGN (right)

