



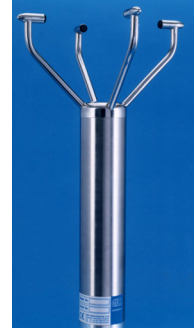
# WindObserver.dll

By Ken Aiken

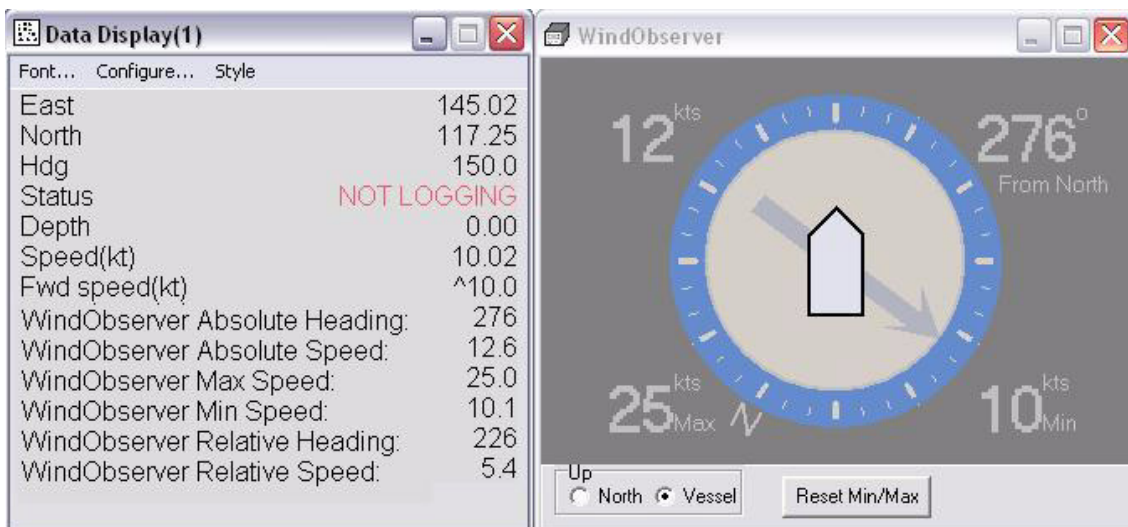
Recently, we have created a driver for the Gill Wind Observer II anemometer. The driver is designed to work with the Wind Observer's default settings. Set-up is quick and easy. Just add the device in your hardware configuration then load up SURVEY.

In the SURVEY Data Display, you can opt to add both the absolute and relative speeds and directions. You may also add the minimum and maximum speed.

In the device window, you can choose North or Vessel Up orientation on the compass.



**FIGURE 1.** Wind Observer Displays in SURVEY - Data Display (left), Device Window (right)



**FIGURE 2.** Sample Windobserver Raw Data

The data is then to WND records in the RAW file. Each record stores the device number, Veritime time tag, the absolute wind speed, wind heading relative to the vessel, vessel heading, and the absolute wind heading.

```
WND 0 53344.613 2.1 213 224 341
WND 0 53345.699 1.7 215 223 348
WND 0 53346.685 1.1 218 224 321
WND 0 53347.672 5.7 220 231 31
WND 0 53348.646 4.9 223 228 38
WND 0 53349.638 0.8 225 222 182
WND 0 53350.623 0.8 227 224 85
WND 0 53351.611 2.1 229 228 53
WND 0 53352.700 1.1 231 226 101
WND 0 53353.685 2.3 233 220 116
WND 0 53354.672 2.3 233 220 118
WND 0 53355.654 4.3 233 223 67
WND 0 53356.639 2.2 234 224 96
WND 0 53357.622 0.8 237 234 98
WND 0 53358.609 0.8 237 235 81
WND 0 53359.699 0.8 237 233 112
WND 0 53360.683 3.4 237 257 348
WND 0 53361.667 5.0 237 267 350
WND 0 53362.654 5.4 237 269 348
WND 0 53363.637 5.2 237 267 339
WND 0 53364.627 4.1 237 260 331
WND 0 53365.611 3.0 237 257 3
```