



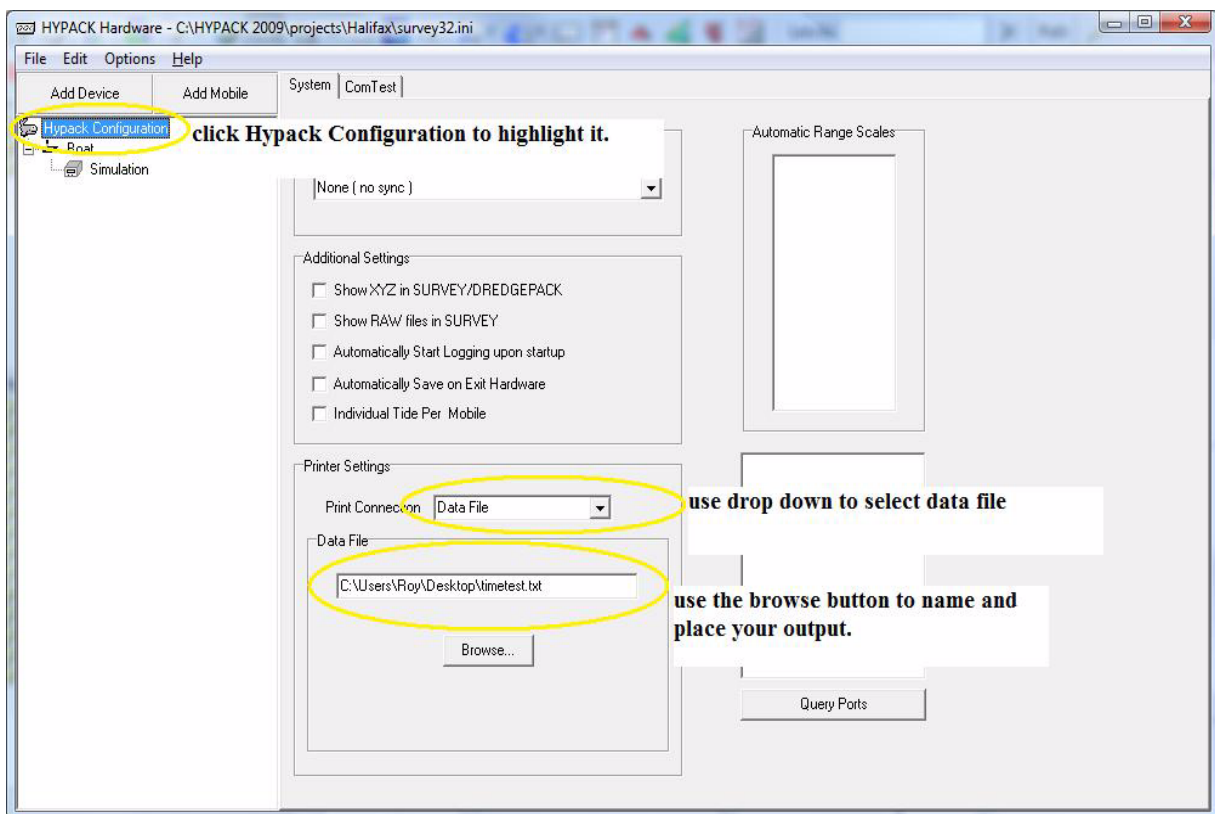
Configuring SURVEY to Output a Printed Report

By Roy Goyette

I got questioned this month on how to output a simple text report of a vessel's position every 15 minutes. Sounds simple enough but I honestly couldn't figure this out, so I went to my back up CHRISTIAN!! He suggested using the printer function from the HYPACK® HARDWARE program.

This method works pretty well for what I needed—a simple report of just the time of day and the X and Y of our HYPACK® User's vessel. I also discovered it has more abilities than I needed that day, but I'll let you discover those on your own. I wouldn't want to steal all the fun!

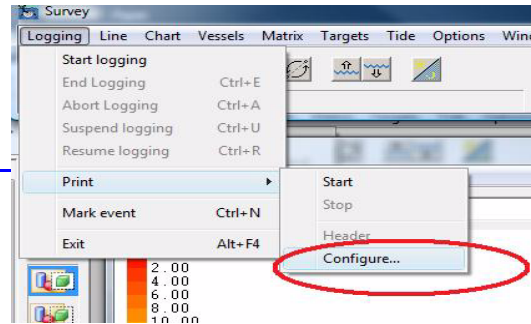
FIGURE 1. Configuring to print a Data File



- 1. Configure HYPACK® HARDWARE to perform this function.**
 - a. Click on PREPARATION -HYPACK HARDWARE.
 - b. **Select 'Hypack Configuration'.** Your screen will look like Figure 1.
 - c. **Set your Printer Connection to Data File.** This will send the information you want to a text file. The Data file configuration options will appear.
 - d. **Click [Browse], navigate to where you want to save the file, enter a name.**
- 2. Configure your output to the file.** SURVEY is where we configure exactly what we want to output to the file and at what frequency: Time, Distance, or Event.

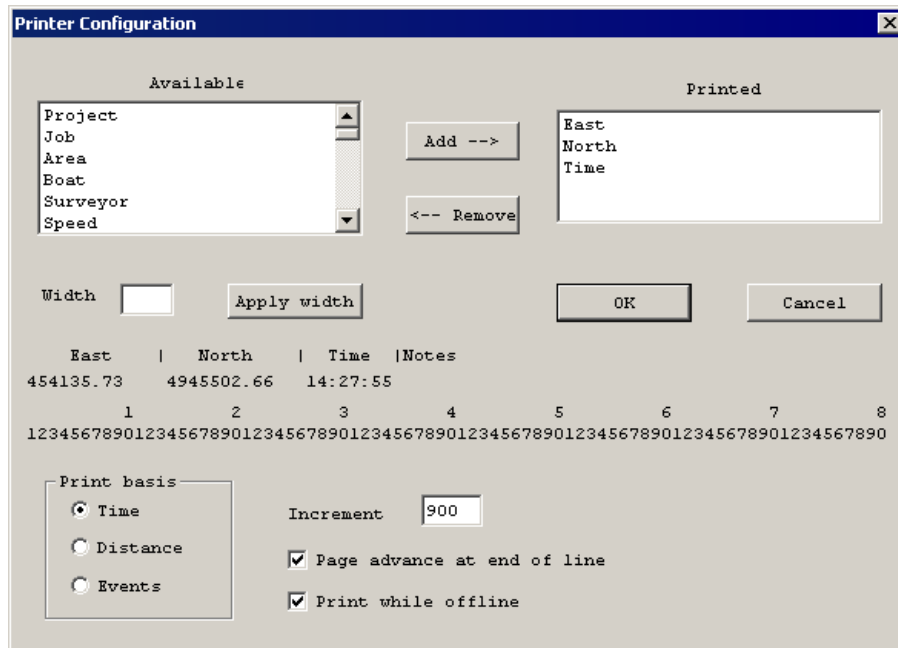
- a. **Launch SURVEY.** Click the whale icon on the Icon Bar or select SURVEY-SURVEY from the menu.
- b. **Select LOGGING-PRINTER-CONFIG-URE.** This will open the Printer Configuration window.

FIGURE 2. Accessing the Print Configuration Dialog



- c. **Configure each item you want sent to your data file.**

FIGURE 3. Configuring Data Sent to the Printer



Anyone who has used HYPACK® for even a short period of time probably already understands this type of dialog. Items in the list on the left are available to be added to the Printed items listing on the right.

- i. **Add an item** simply select it in the Available list then click the Add button.
- ii. **Check the Column Width.** The value in the 'Width' field defines the number of characters allocated for the selected item. If the defined width is less than the number of characters in the data, the data will be truncated in your report.

For example, add 'Time' to the Printed listing on the right. Now, with 'Time' selected in the Available list, look at the Width field. If the value is at least 8, the time will be displayed in hh:mm:ss format.

To change the column width, enter a new 'Width' value and click [Apply].

In my example we just needed an X and Y and Time for our little report. So I added my items from the Available to the Printed list then checked the width value for each.

3. **Set other output options.** and one page per survey line. He's also dredging but he's not logging data

-
-
- **Print Basis** is the frequency at which the data is sent to the data file. My customer wanted a data entry every 15 minutes so he selected the 'Time' option. The increment for time is seconds so he had to do a little math here (15x60) and enter 900 in the Increment field.
 - **Print while offline:** Our user was dredging, but he was not logging data except this print report so he selected 'Print while offline'. Select this option to send data to your file regardless of your logging status.
 - **'Page advance at end of line':** This option begins a new page at the start of each new planned line.

You should be all set now. It's time to head out on the water for some testing.

4. **Test your report generation in SURVEY.**

- **If the 'Print while offline' option is selected,** SURVEY will automatically begin sending data to the text file as long as you are in SURVEY.
- **If the 'Print while offline' option is *not* selected,** you must manually start the print function when you first open SURVEY. (Select LOGGING- PRINT- START.) After that, the printing will turn on and off with your logging status.

With the options set in Figure 3, every 15 mins. the HYPACK® SURVEY program will write the configured items to a data file which I can then print out or email to someone.