



New ODIM MVP Sound Velocity Driver

By John Marinuzzi

We have just completed a device driver for the new ODIM MVP Series Sound Velocity Profilers (http://www.brooke-ocean.com/mvp_seismic.html). MVP, which stands for Moving Vessel Profiler, has the ability to track sound velocity values over a range of depths. The HYPACK® driver gives you the ability to display sound velocity vs. depth profiles and record the data to HYPACK® sound velocity files. The driver will also feed the device with navigation data through a serial port and send the sound velocity information to shared memory for use by other programs like HYSWEEP®.

USING THE DRIVER

The setup for the driver is very similar to any other HYPACK® driver. You specify the communication port and port settings for the device. The driver is an “output” driver.

To send the navigation information to the device, click the “Generate Output Messages” checkbox in the Options. This enables the driver to get the navigation information from the SURVEY program through shared memory and output NMEA 0183 compatible messages to the device.

FIGURE 1. MVP Device Setup

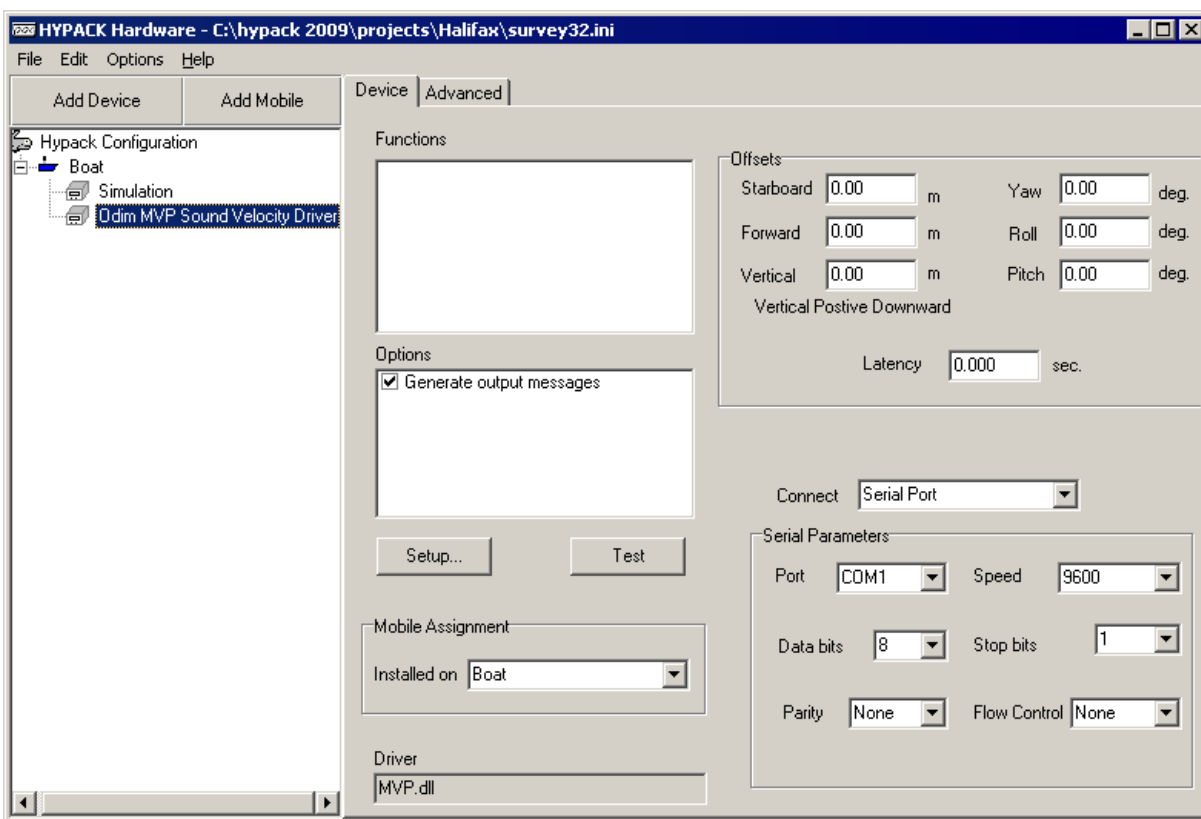
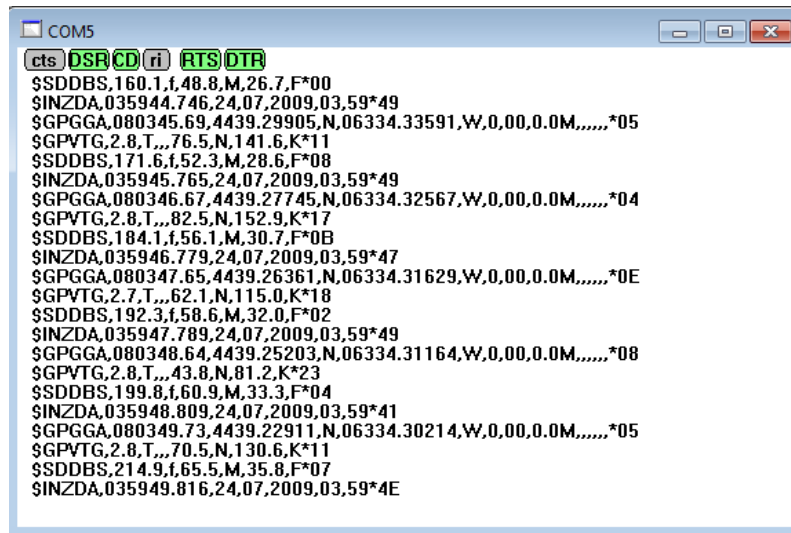
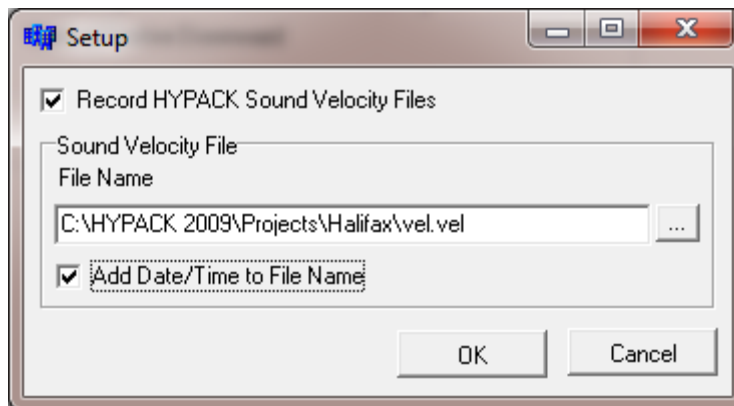


FIGURE 2. Sample Output Window from the Port.



Click the Setup button to access the following options:

FIGURE 3. MVP.dll Driver Setup



If you wanted to record HYPACK® sound velocity files to use in post-processing, you would check that option here. You can record the data either to one file, or to multiple files with the date and time the readings were taken added to the filename.

FIGURE 4. Directory listing for the options selected in Figure 3

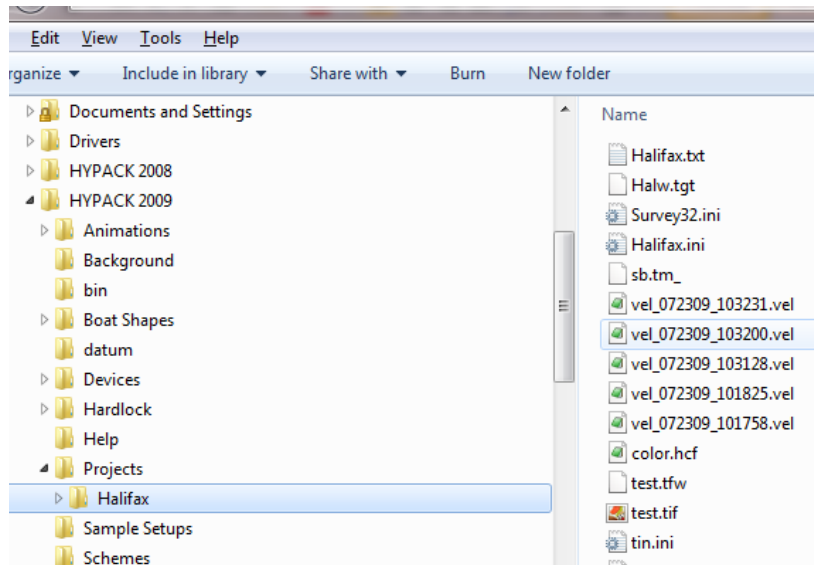
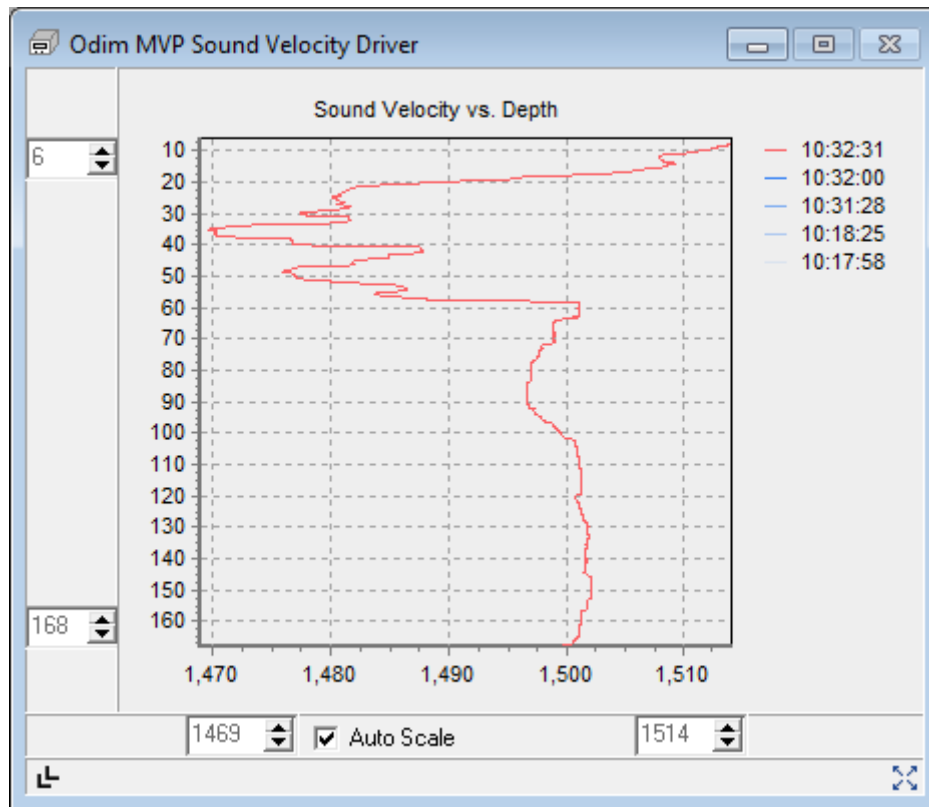


FIGURE 5. MVP Device Window



The graph will show the last five profiles, with the latest in red and the older ones in increasingly lighter shades of blue. You have the option of Autoscaling the graph window to the extents of the readings or manually setting the extents via the text boxes on the corners of the graph. The button on the bottom right can be used to zoom to the extents of your data

if autoscaling is not being used. The button on the bottom left will hide or show the extents frames. You can set it to autoscale then hide the extents frames to get more graph space in the window.

If you have any questions about the new MVP device driver please contact technical support (help@hypack.com).