



# Playback HYPACK® RAW Files

By Christian Shaw

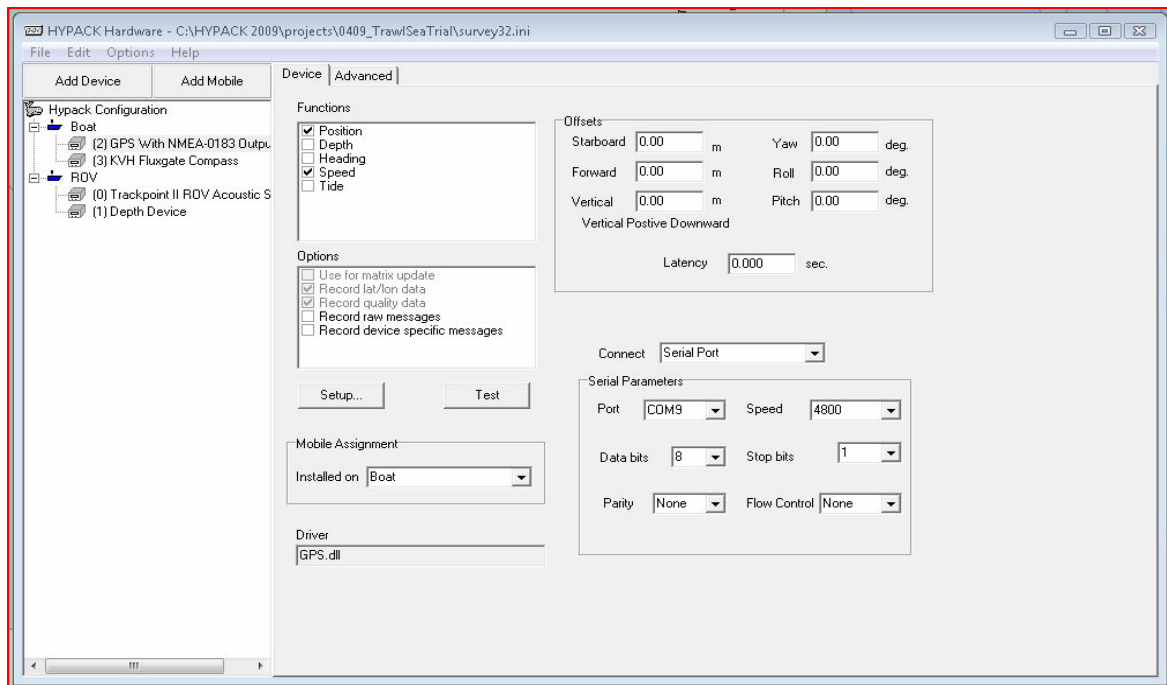
HYPACK, Inc. has a driver that allows the user to playback HYPACK® RAW data files using the HYPACK SURVEY program. The driver is Playback.dll and can be found in the device driver list in HYPACK® HARDWARE.

A few things must be done to ensure that this works properly.

1. **View your initial HYPACK® HARDWARE setup and note your device ID's.**

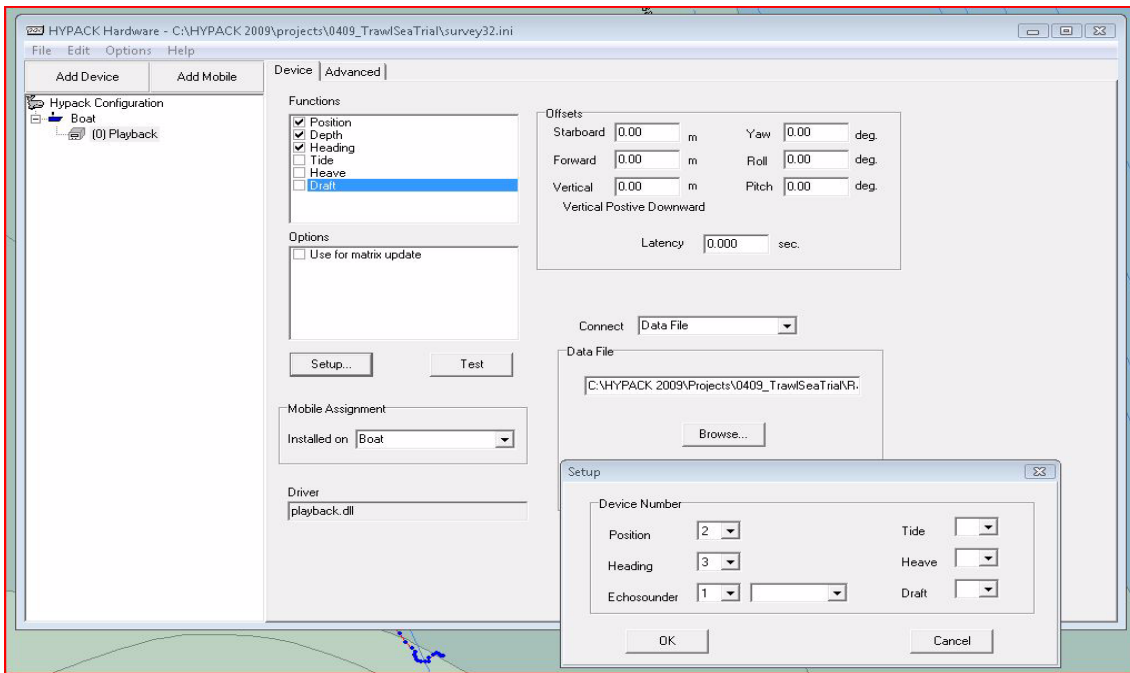
*Tip:* Select OPTIONS>DISPLAY>DEVICE ID to display the Device ID in the driver list. You will need these device numbers for the playback.dll driver setup form.

**FIGURE 1.** Viewing your Device ID's

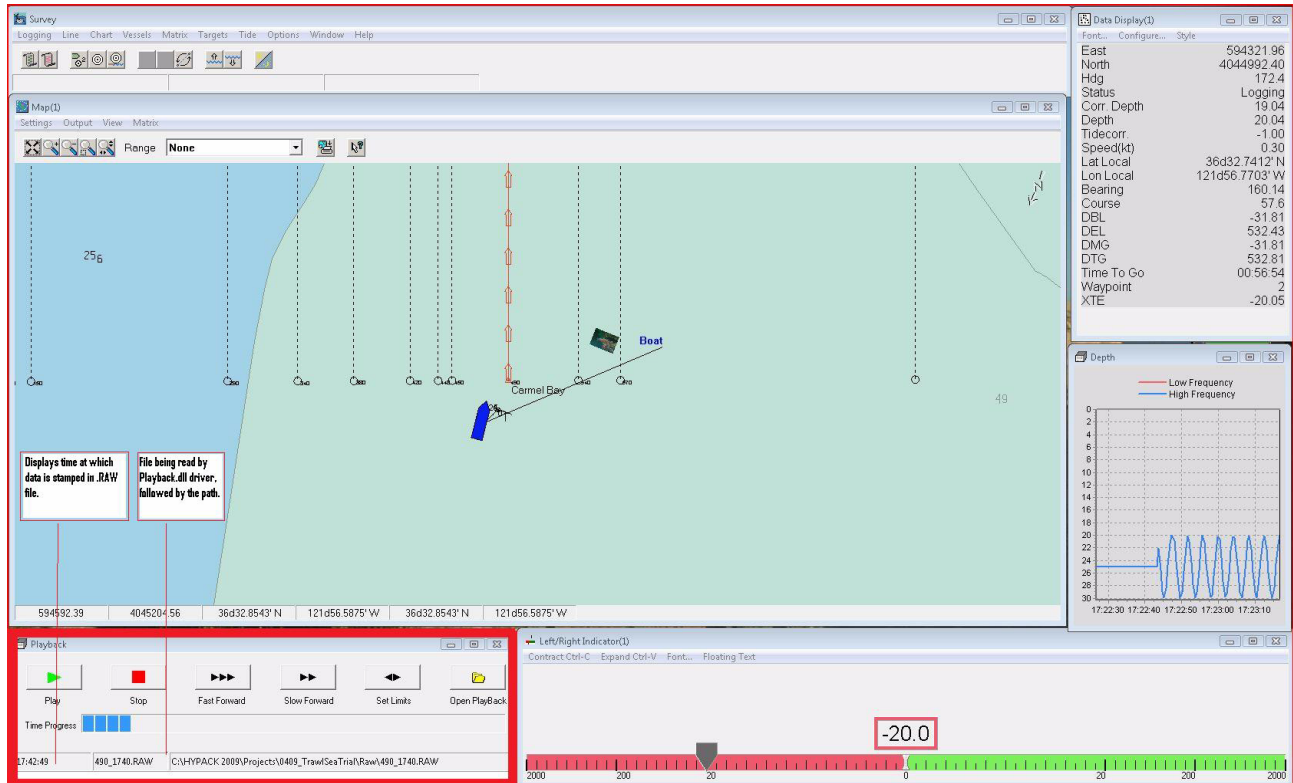


2. **Save your initial (working) Hardware profile for backup.**
3. **In a new configuration, add only the Playback.dll driver under the boat and connect your initial RAW file as a data file under the connect settings of the Playback.dll driver.**

**FIGURE 2. Configuring the Playback Driver**



4. Once these step are complete you can launch the SURVEY program.



---

---

In the SURVEY program you have a Playback Control Interface that will allow you to run the playback, open a new playback RAW file and set the time range that will be played back in SURVEY.

Programming has worked on this driver in the last few months, so if you have HYPACK 2009 or HYPACK 2008 and would like the latest and greatest, just email [help@hypack.com](mailto:help@hypack.com) to request it.