

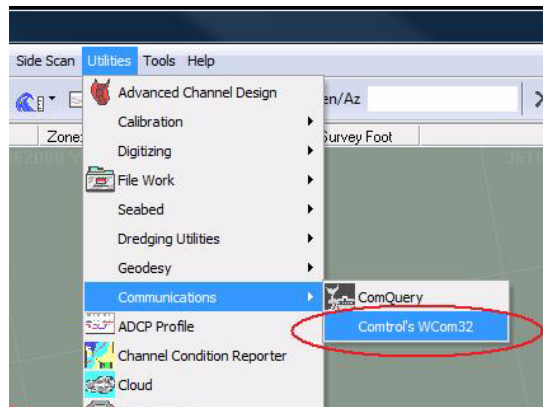


# Collecting Raw Data from your Hydrographic Equipment

By Joe Burnett

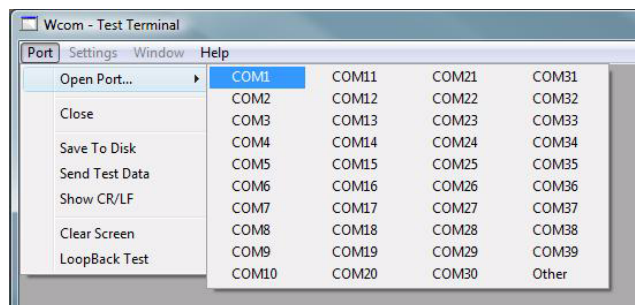
1. In the Main HYPACK Shell, Click on **Utilities**, then **Communications**, then **Control's WCom32**. Now the **Wcom-Test Terminal** Window appears.

*FIGURE 1. Launching the WCom32 Utility*



2. Click on **Port**, then **Open Port**, and select the **Com Port** that has the data coming into the computer. A window labeled **COMx** (x being the number of the Com Port that is now Open) now appears.

*FIGURE 2. COM Window*



If your equipment is hooked up to the computer and outputting data, you will now see the raw data from your equipment "streaming" up the window.

**If you do NOT see data "streaming" up your screen**, one of three things is going on:

- Your equipment is not outputting data,
- You have a bad data cable, or
- You need a Null Modem adapter on your data Cable.

I highly recommend that you ALWAYS carry at least one null modem adapter, at all times. They can be invaluable, and will only cost you about \$5 at your local Radio Shack.

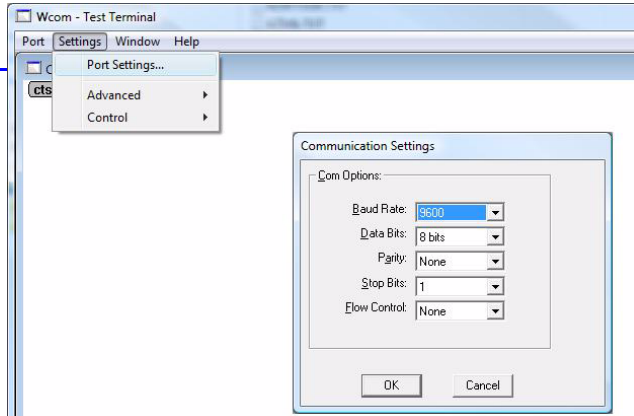
**If the data does not look as you are expecting**, then perform the following:

1. **Select Settings > Port Settings**. The Communication Settings window will appear.

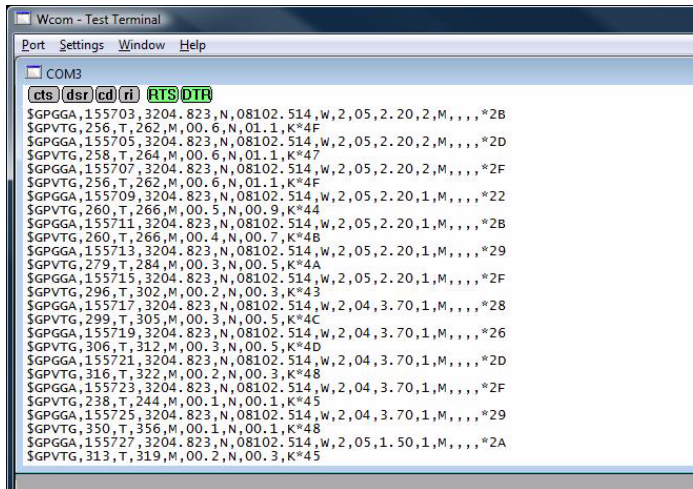
**FIGURE 3. Communications Settings Dialog**

2. **Set the each field in accordance with the equipment's output format and click OK.**

Now, you should see the correct format of your equipment's data and ready to record it.



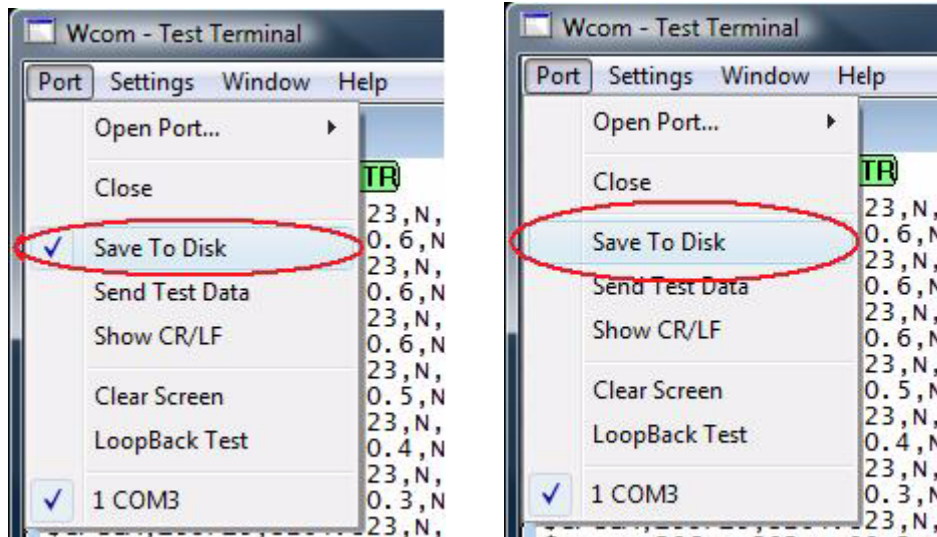
**FIGURE 4. Data Scrolling in WCom32**



To record your data:

1. **Select Port >Save to Disk and collect about 10 to 30 seconds of data.**
2. **When you have collected enough data, click on Port, and "uncheck" Save To Disk.**

**FIGURE 5. Start/Stop Recording Data in WCom32--Start (left), Stop (right)**



---

The raw data is now stored in a file named kOMx.txt (where the "x" after kOM is a number). This file is located in the C:\Hypack 200x\Support\Com Directory (in your Current Hypack version).

**FIGURE 6.** *Locating your Recorded Data*

Send this file to [help@hypack.com](mailto:help@hypack.com) and we will be able to test the driver with this data file.

*Tip:* It may also be a good idea to copy the WCOM32.EXE and place it on your computer desktop. This way it is readily accessible for, not only recording data from your hydrographic equipment, but as a way of viewing whether or not your equipment is transmitting data to your computer. If your computer can't see the data, neither can HYPACK®!

