



Bitmap-based Vessel Shapes in SURVEY

By Lazar Pevac

The new SURVEY allows you to import a vessel shape in bitmap format. You need two files to achieve this goal.

- The first file is the vessel picture in bmp format.
- The second file is a TXT file with the same name and a TXT extension. The purpose of this file is to set the vessel origin and size. It has only two lines.
 - The first line has two numbers specifying the vessel origin where (0, 0) is the lower left corner.
 - The second line has only one number defining the length of the vessel.

Here is a sample TXT file:

```
91 663  
402
```

The vessel length can be further corrected with the scale factor located in the vessel settings dialog. This option is useful when you switch from meters to feet and you want to keep the same vessel shape.

White color in the BMP file is drawn as transparent. It means that the background in SURVEY will be visible in areas painted in white.

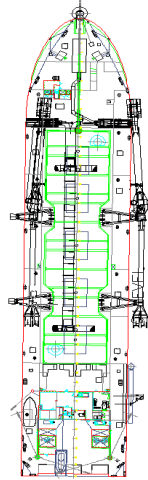


FIGURE 1. The picture below displays a BMP shape file in action.

