



DXF Safety Contours

by Judy Bragg

A **Hazard Contour** (also known as a safety contour) is a user-defined contour level that warns of depths unsafe for navigation. In HYPACK® 2009, when you display contours exported from the TIN MODEL program, the hazard contour can be set to draw in red in the SURVEY Map window.

During SURVEY, the program monitors changes in your real-time tide and draft corrections, and shifts the red contour up or down accordingly.

More than one DXF file can be affected by the Track Hazard Contour setting.

FIGURE 1. Track Hazard Contour Dialog

Choose which contours you want to display.

- **Hazard** shows only the hazard contour.
- **Shallow** displays the hazard contour in red and all shoaler contours in gray.
- **All**: Shows all contours from your files with the hazard contour in red.
- **None**: Shows all contours from your files, but the hazard contour is not drawn in red.

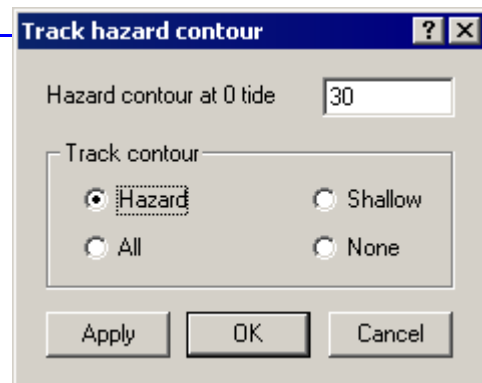
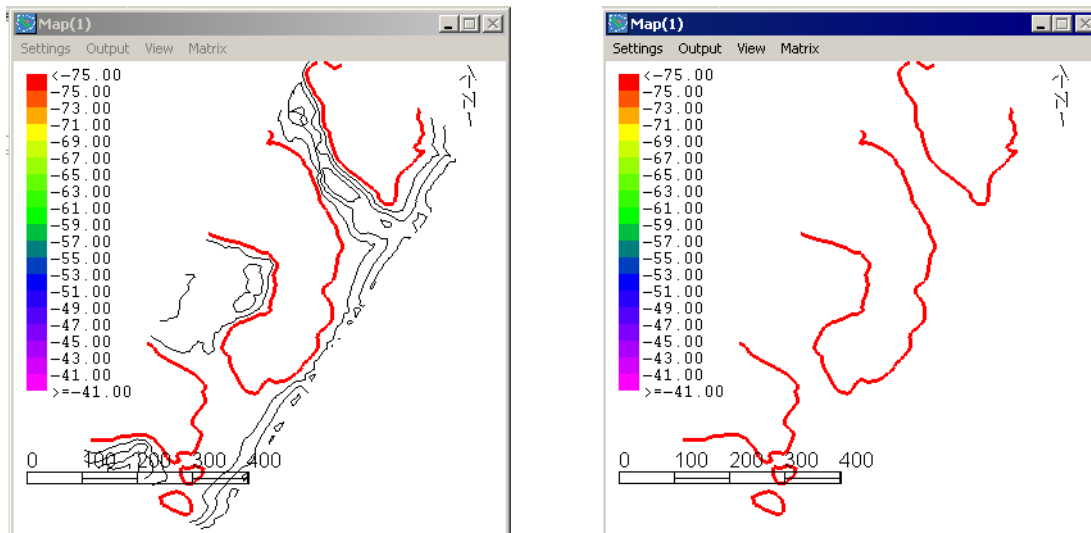


FIGURE 2. Hazard Contour - Shallow (left), Hazard (right)



Note: The Hazard Contour setting affects *only* DXF contours constructed in the TIN MODEL program.