



Cutter Head Profile in DREDGEPACK®

By Christian Shaw

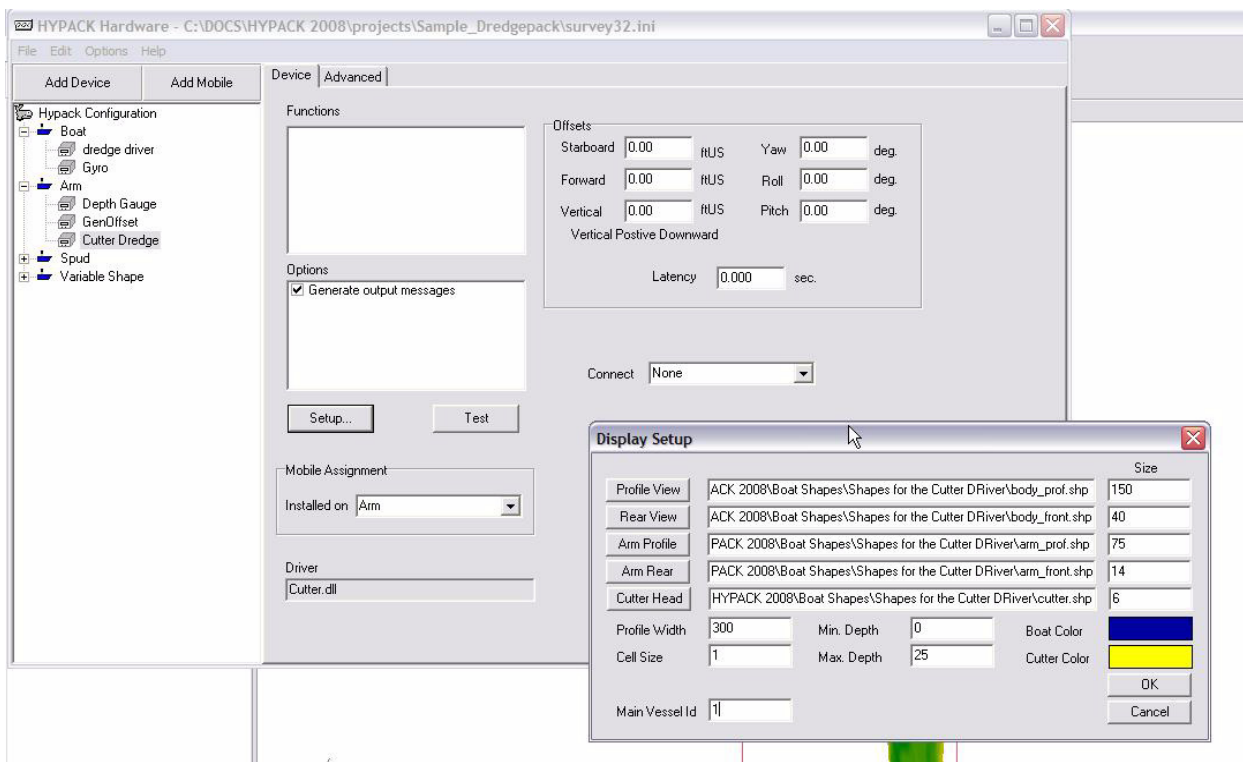
One excellent option for Cutter Suction dredging in HYPACK® is the Cutter driver. There are many advantages to using the cutter driver window in lieu of the standard Dredge Profile window while dredging:

- It allows you to Zoom and Pan within the profile window with simple keyboard commands.
- It allows you to import a custom shape that accurately depicts the shape and size of your dredge.

Installation is quite easy.

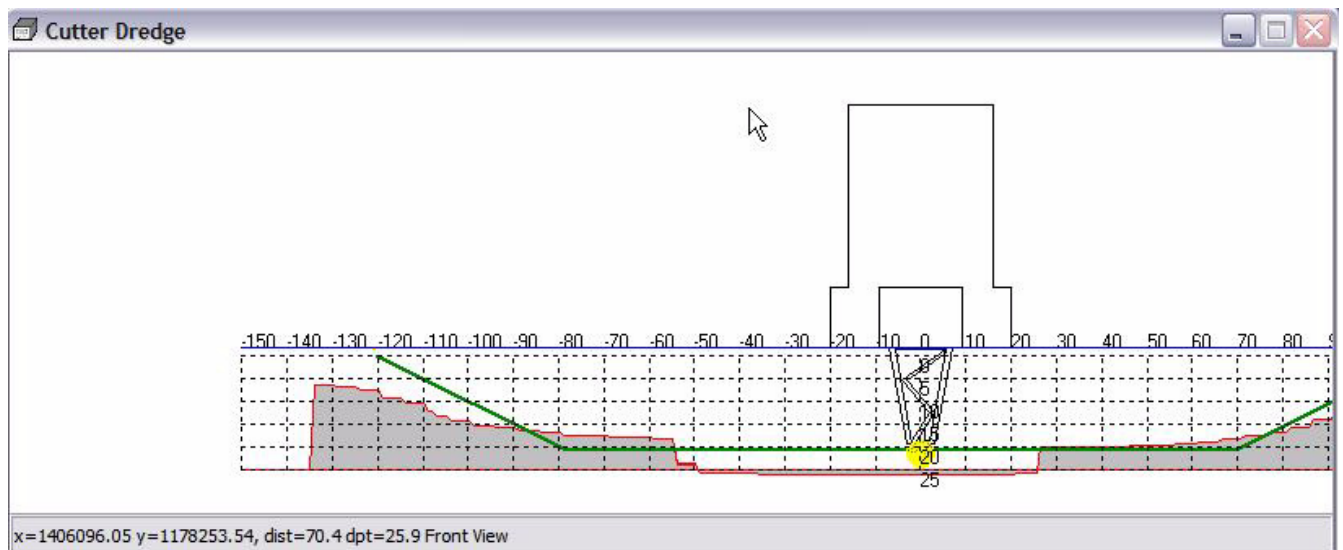
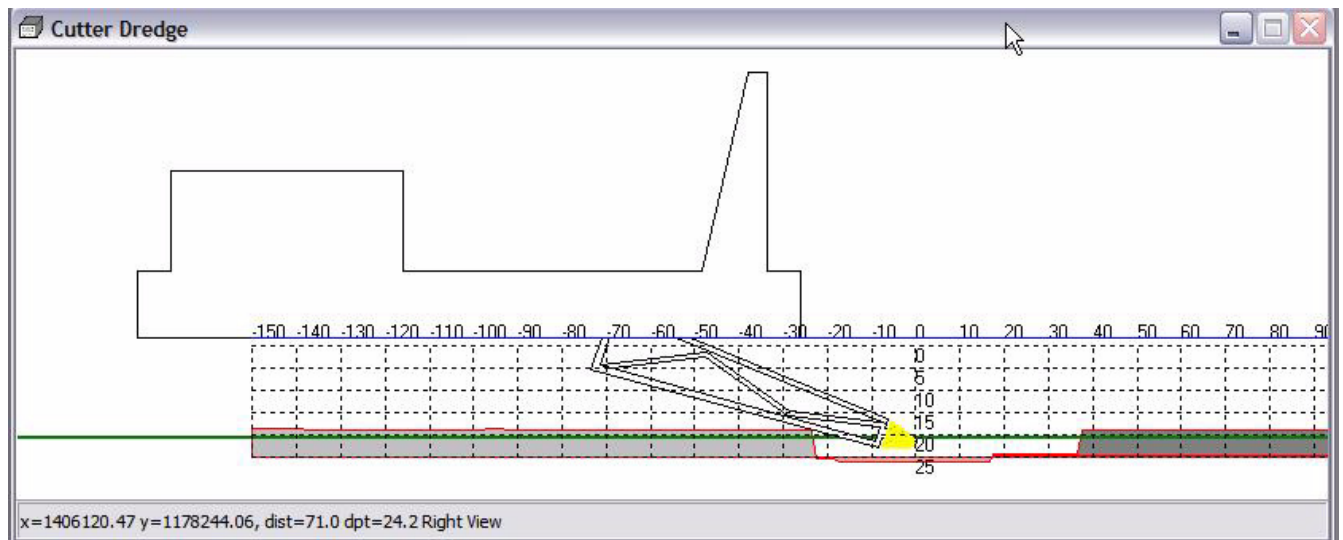
1. **Under your Cutter Head Mobile simply add the Cutter.dll driver.** You will find default shapes in the \HYPACK 2009\Boat Shapes\Shapes for the Cutter Driver folder. If you need to modify these default boat shapes, simply open these shapes in the Boat Shape Editor and make the necessary modifications as per your vessels dimensions.

FIGURE 1. In the Setup Dialog



- **Profile Width** determines the width of the profile window scale in its own window in DREDGEPACK®. If working in a navigation channel we recommend making the Width at least the width of the Channel Plan to see complete channel coverage.
- The **Cell Size** box determines how the Cutter.dll driver will resize your matrix and display this surface in the Profile Window. If you are working with a very small resolution matrix, it may be necessary to scale back this Cell Size, but the default Cell Size of 1 works well.

In DREDGEPACK you will find an extra CUTTERHEAD profile window.



The Shortcuts for this window are as follows:

- Plus Key : (+) Zoom In
- Minus Key : (-) Zoom Out
- Page Up : Rotates view Front/Right/Back/Left
- Arrow Up/Down/Right/Left : Pan Screen