

SB Selection

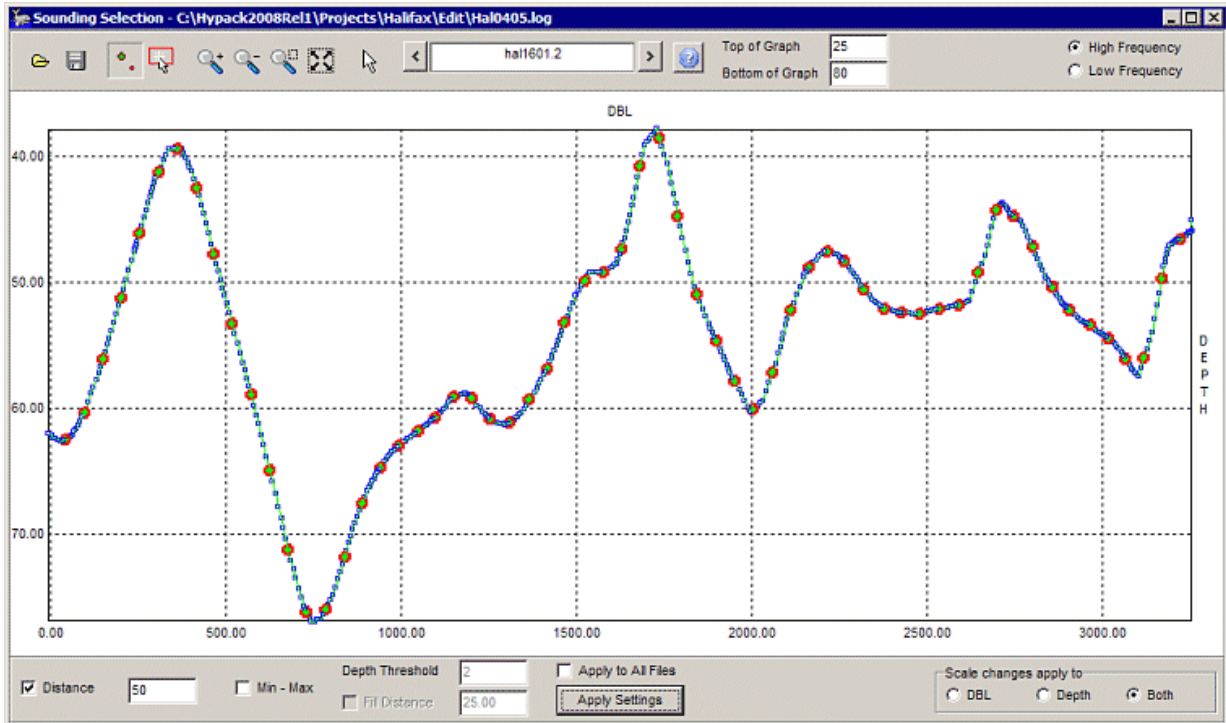
By Judy Bragg

SB SELECTION enables you to extract a subset of an edited All format dataset for the purpose of plotting. Soundings are selected based on distance, the highs and lows of your dataset, or both. The program then generates a new set of All format files containing only the selected soundings. This process *does not change the original data set*.

You can load single ALL format file, or a catalog of multiple ALL files to the program. The lines are drawn, one at a time, to the SB Selection screen.

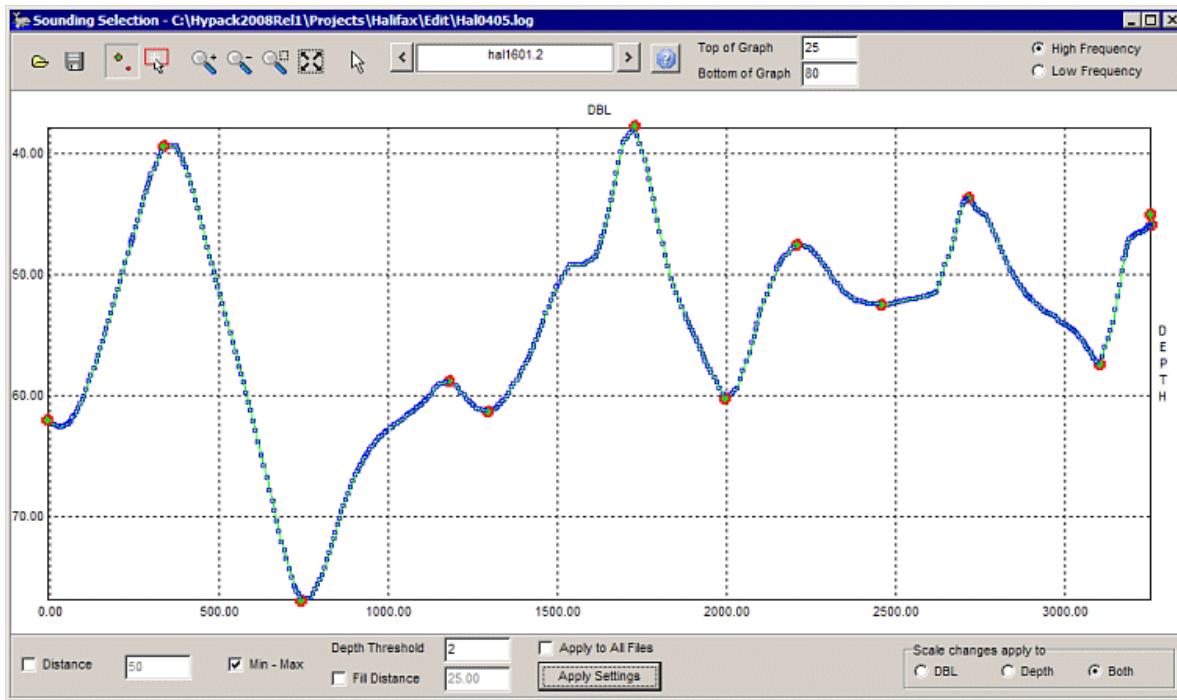
Once this is done, you can manually select points, or enter parameters to guide the program to automatically select points.

The **Distance** option spaces your soundings along the line at user-defined intervals.



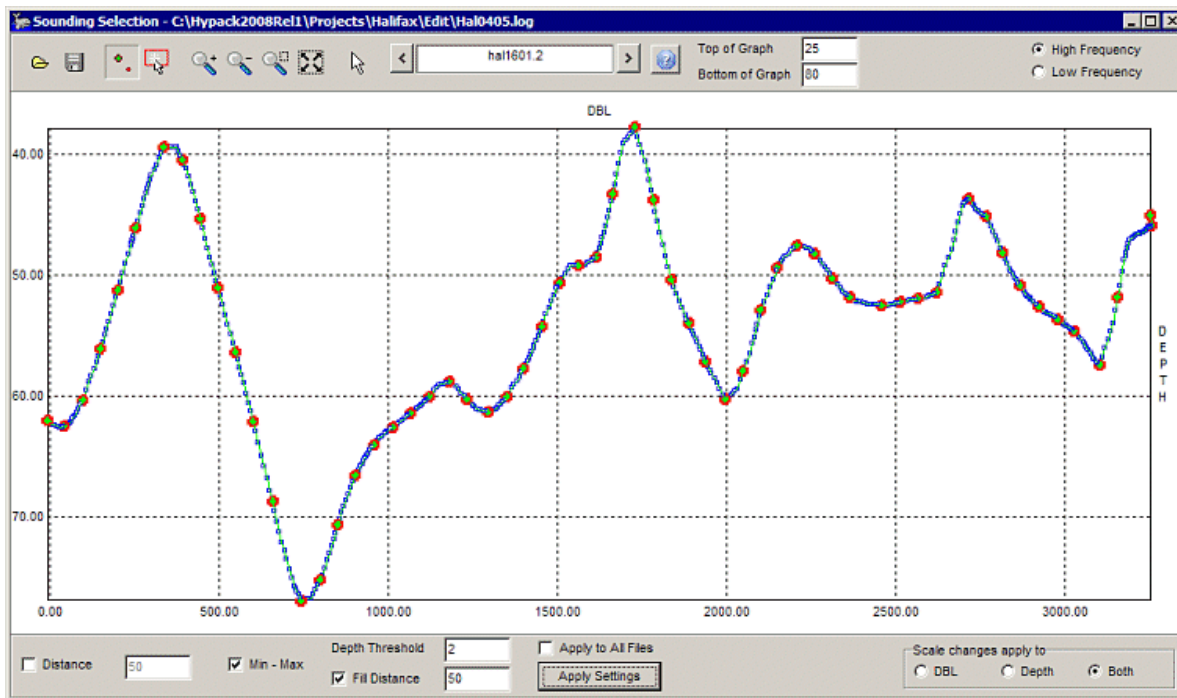
Soundings Selected by Distance

The **Min-Max** option selects soundings at the high and low points of your data.



Soundings Selected Only by Min-Max

This method insures you get the full extent of your contours, but there may still be large spaces between the selected soundings. In this case, you may choose to fill those spaces with additional soundings based on the **Fill Distance**.



Soundings Selected by Min-Max with a Fill Distance