



MCC

End suction centrifugal pumps

A full range of product features

Superior materials of construction: AISI 316L stainless steel impeller and seal housing for corrosion resistance, and improved strength and ductility.
Cast iron casing for strength and durability.

High efficiency impeller: Enclosed impeller in 316L stainless steel maintains maximum efficiencies over the life of the pump without adjustment.

Casing: Cast iron construction with NPT threaded, centerline connections, easily accessible vent, prime and drain connections.

Mechanical seal: Standard John Crane seal with carbon ceramic faces, BUNA elastomers, and stainless metal parts.

Motors: NEMA standard open drip-proof, totally enclosed fan cooled enclosures*. Rugged ball bearing design for continuous duty under all operating conditions.

* Premium efficiency where required by Department of Energy regulations.

NSF 61 Certification: Pumps assembled at the factory are certified to the NSF/ANSI 61 Drinking Water System Components Standard. (BUNA Seal versions are not NSF Certified.)



The various versions of the MCC are identified by a product code number on the pump label. This number is also the catalog number for the pump. The meaning of each digit in the product code number is shown at right.

MCC product line numbering system

Example product code

1 MC1 C 1 E 0

Mechanical seal and o-ring

0 = Pre-engineered standard
For optional mechanical seal modify catalog order no. with seal code listed below.

John Crane Mechanical Seal (5/8" seal)

Seal code	Rotary	Stationary	Elastomers	Metal parts	Part no.
0	Carbon	Ceramic	BUNA	18-8SS	10K10

Impeller option code

Impeller code	Pump size		
	100MC 1 x 1 1/4 - 6	125MC 1 1/4 x 1 1/2 - 6	150MC 1 1/2 x 2 - 6
	Diameter	Diameter	Diameter
A	6 1/8	-	5 1/8
B	5 3/4	5 15/16	5
C	5 3/16	5 3/4	4 3/4
D	4 3/4	5 11/32	4 1/2
E	4 7/16	5 1/16	4 3/8
F	-	4 7/8	4
G	-	4 5/8	3 5/8
H	-	4 1/4	-
J	-	4	-

Driver, motor

1 = 1 PH, ODP 3 = 3 PH, ODP 575V 5 = 3 PH, TEFC
2 = 3 PH, ODP 4 = 1PH, TEFC 6 = 3 PH, TEFC 575V

Note: motor is premium efficient where required by DOE.

HP rating

C = 1/2 HP E = 1 HP G = 2 HP J = 5 HP
D = 3/4 HP F = 1 1/2 HP H = 3 HP

Driver: hertz/pole/RPM

1 = 60 Hz, 2 pole, 3500 RPM 4 = 50 Hz, 2 pole, 2900 RPM

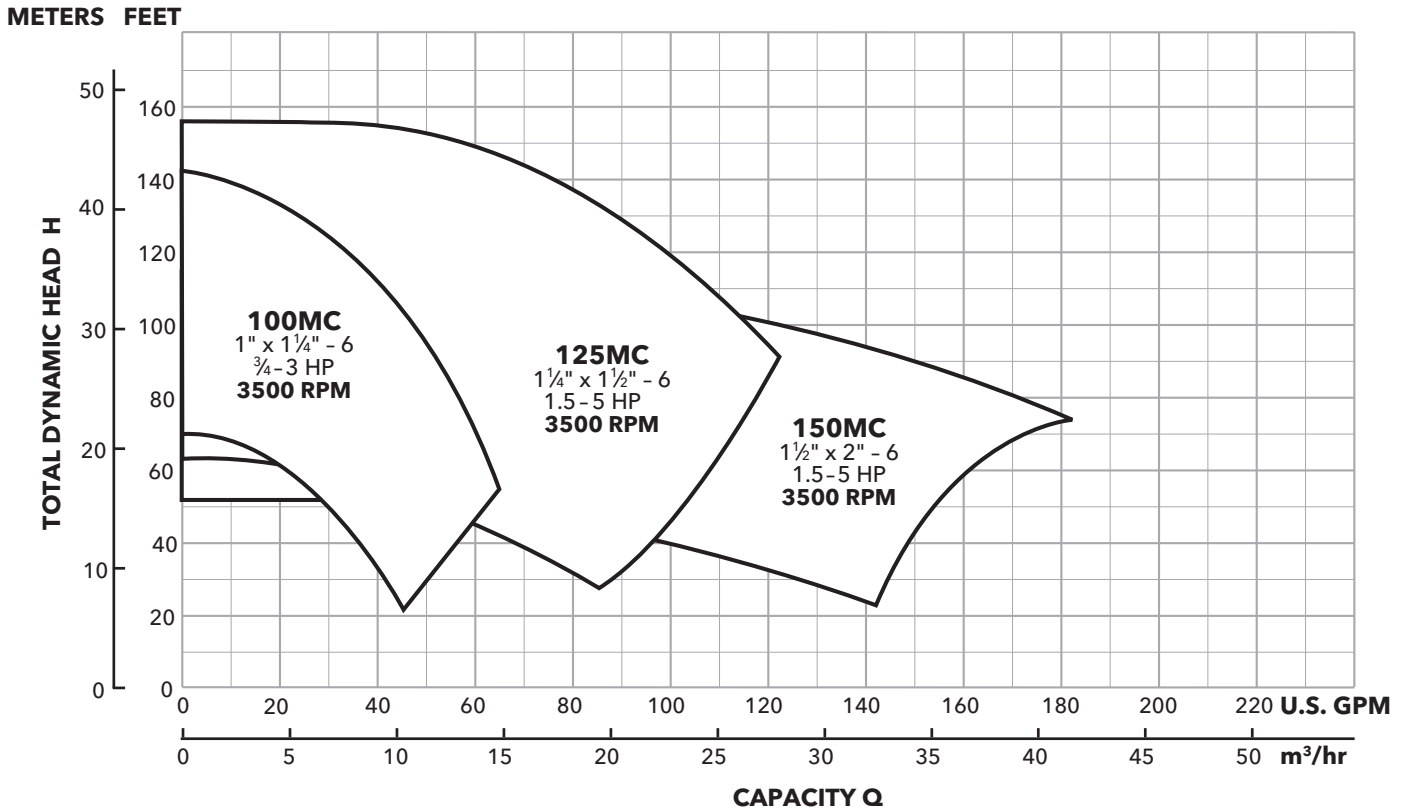
Material

MC = Cast iron

Pump size

100 = 1 x 1 1/4 - 6 125 = 1 1/4 x 1 1/2 - 6 150 = 1 1/2 x 2 - 6

Performance coverage (60 Hz)



Notes:

Not recommended for operation beyond printed H-Q curve.

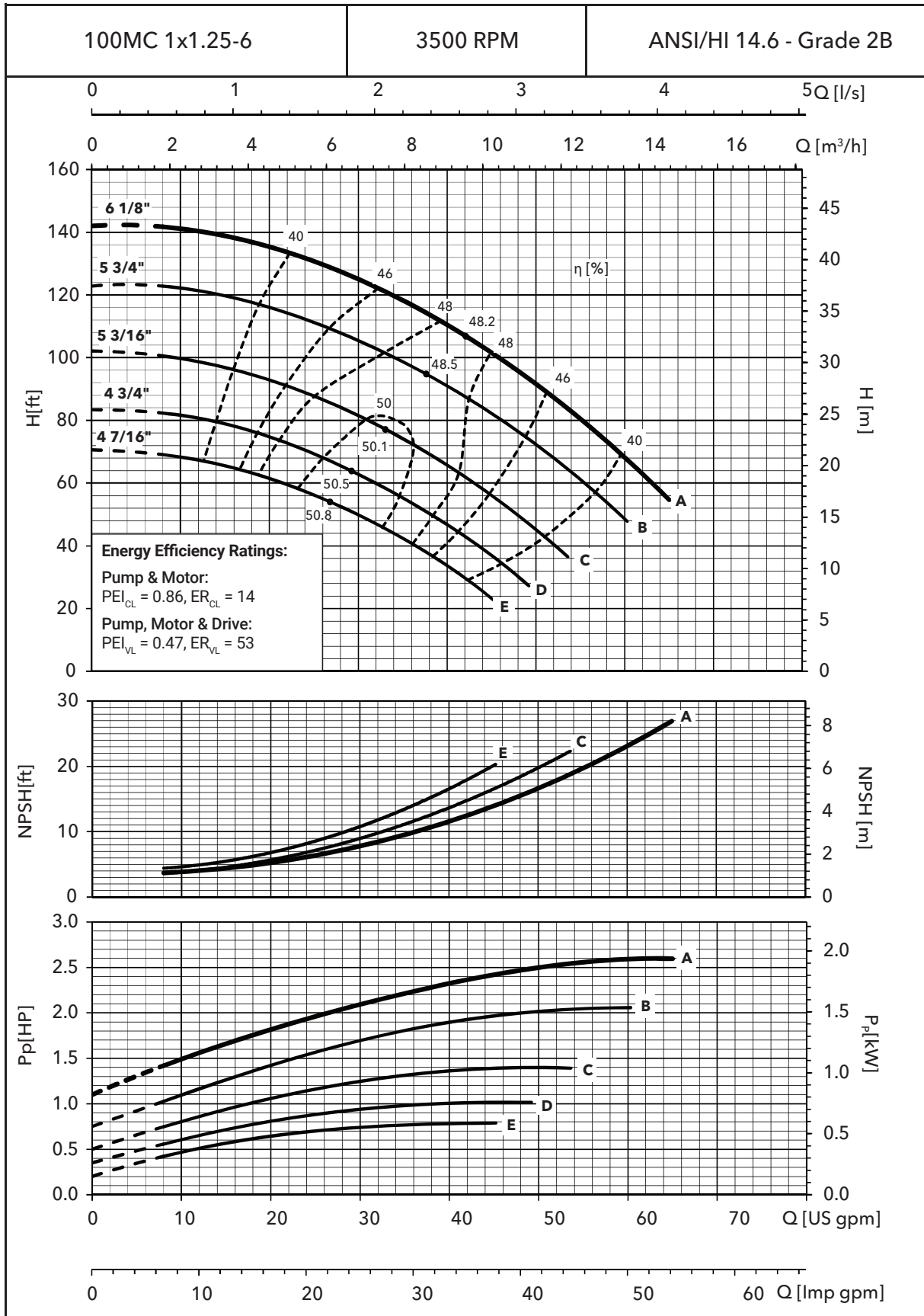
For critical application conditions consult factory.

Not all combinations of motor, impeller and seal options are available for every pump model. Please check with Goulds Water Technology on non-cataloged numbers.

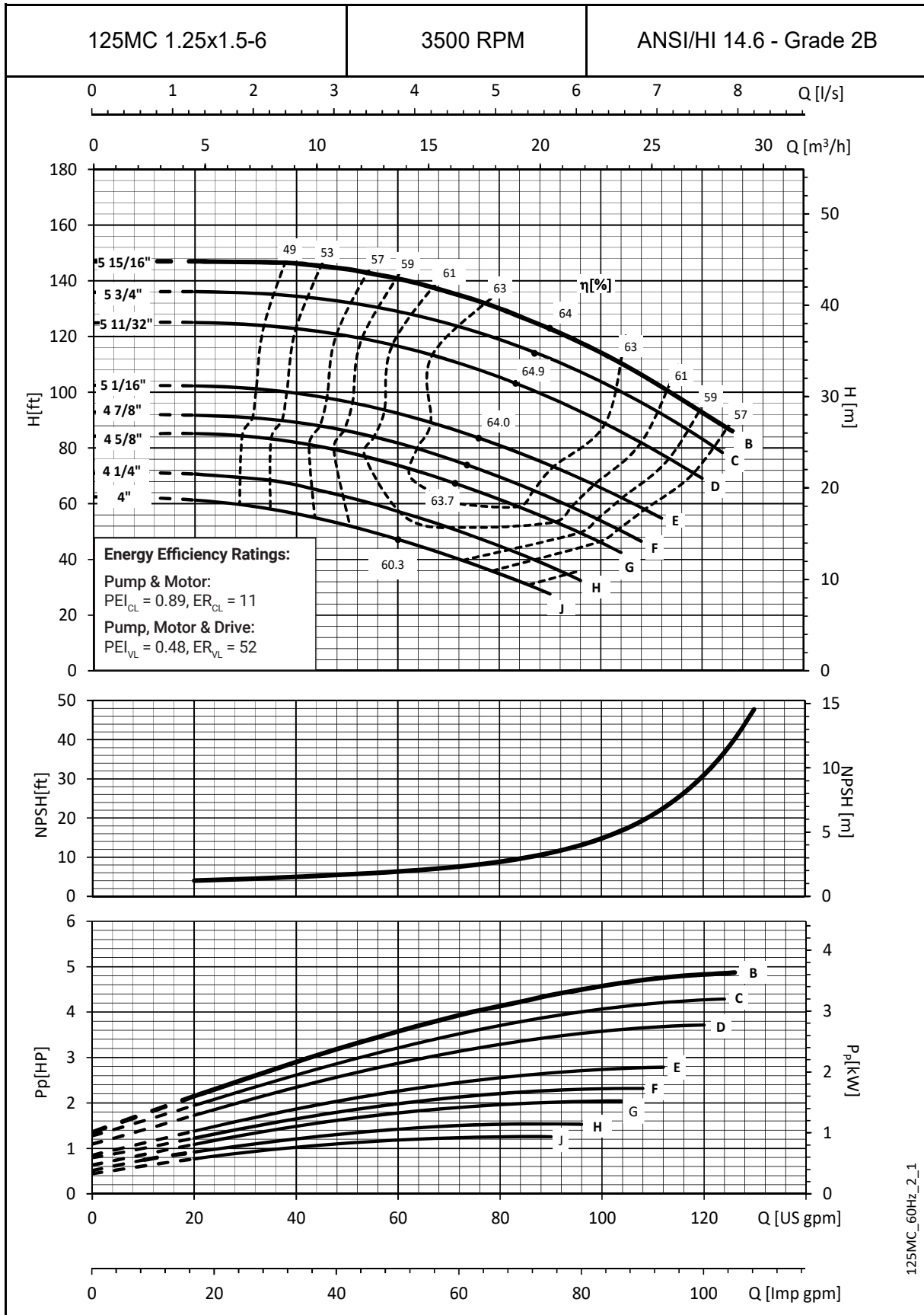
All standard 3500 RPM ODP* and TEFC* motors supplied by Goulds Water Technology, have minimum of 1.15 service factor. Standard catalog units may utilize available service factor.

* Premium efficiency where Department of Energy regulations apply.

Performance curves – 60 Hz, 3500 RPM

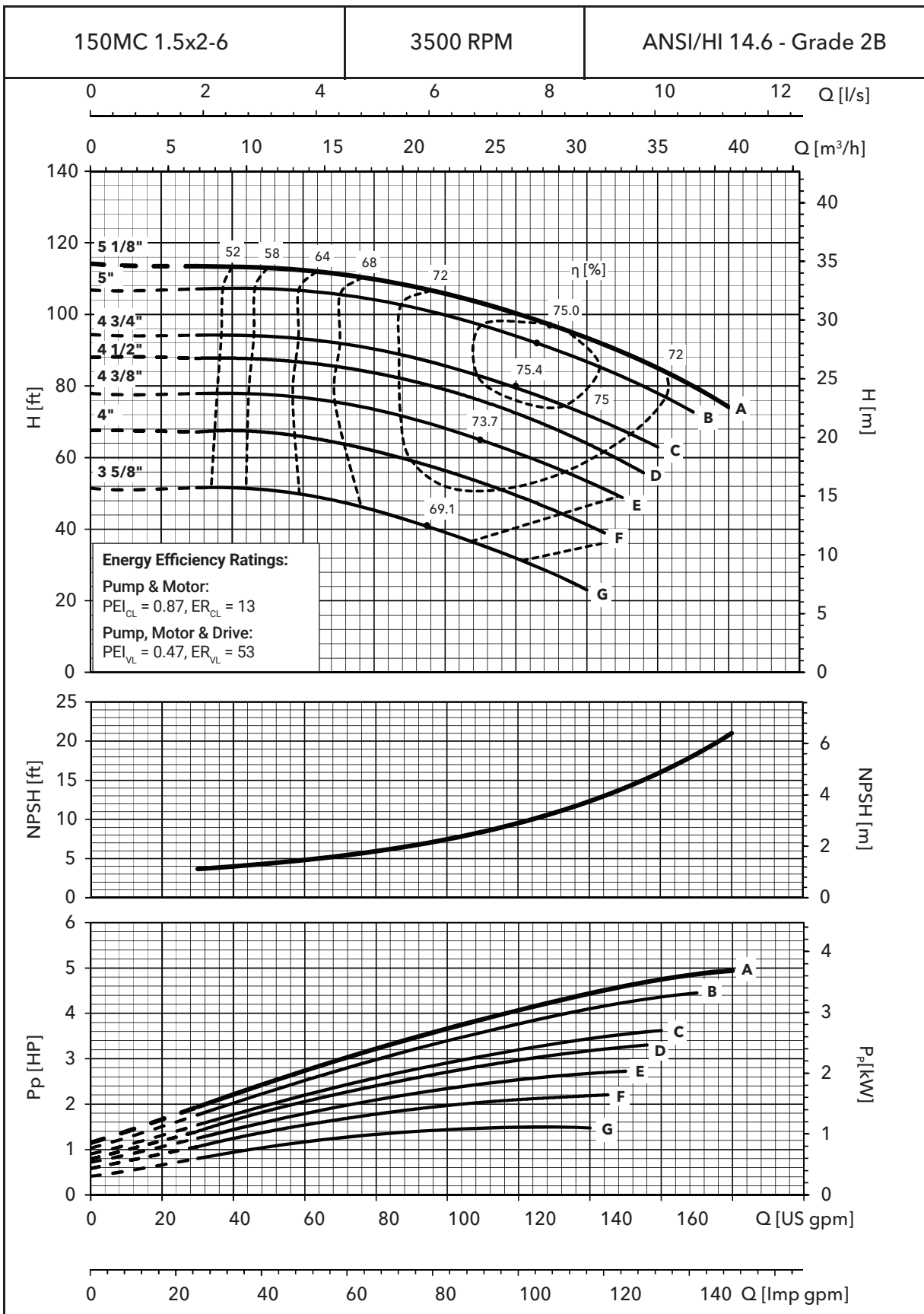


Performance curves – 60 Hz, 3500 RPM

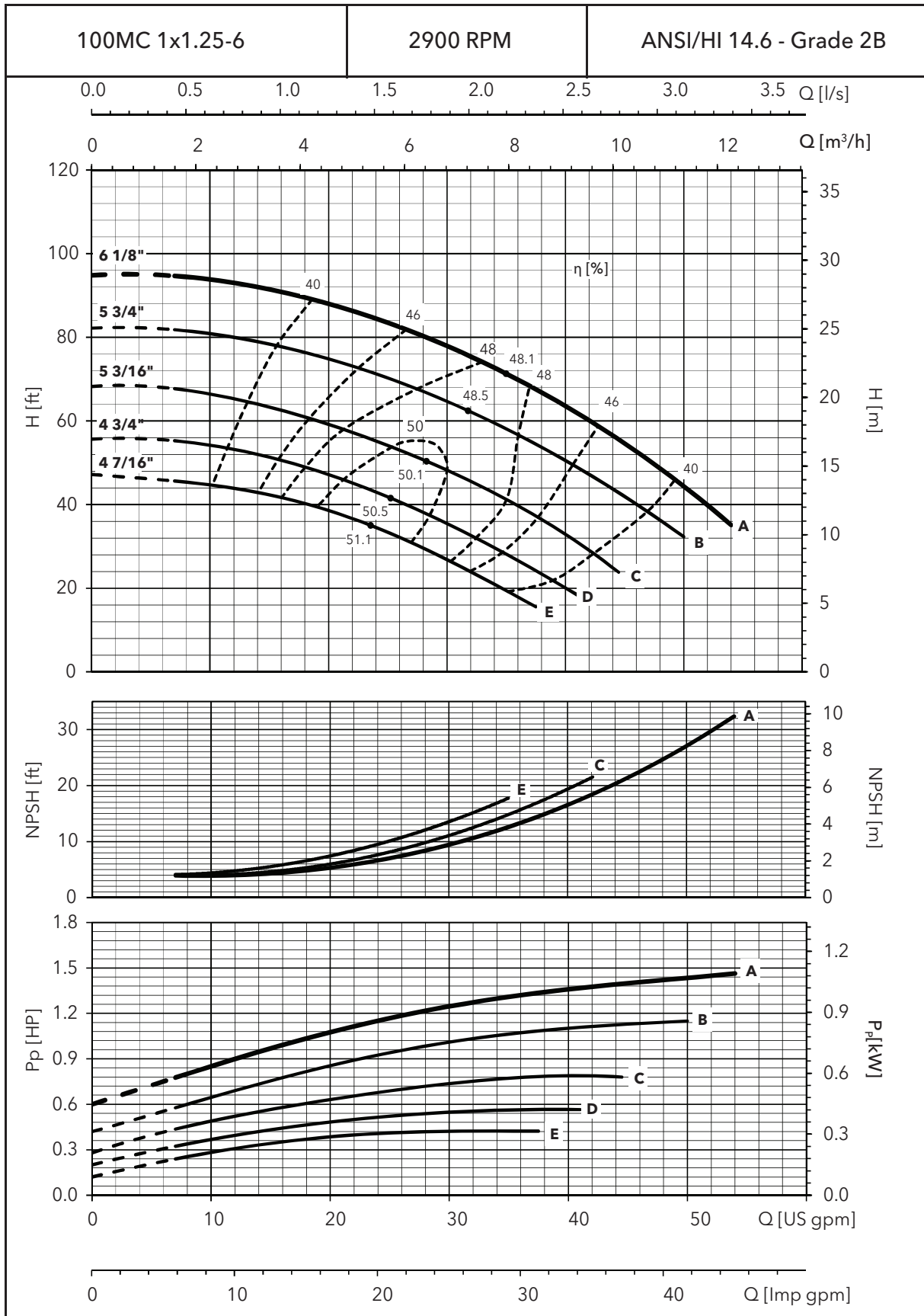


125MC_60Hz_2_1

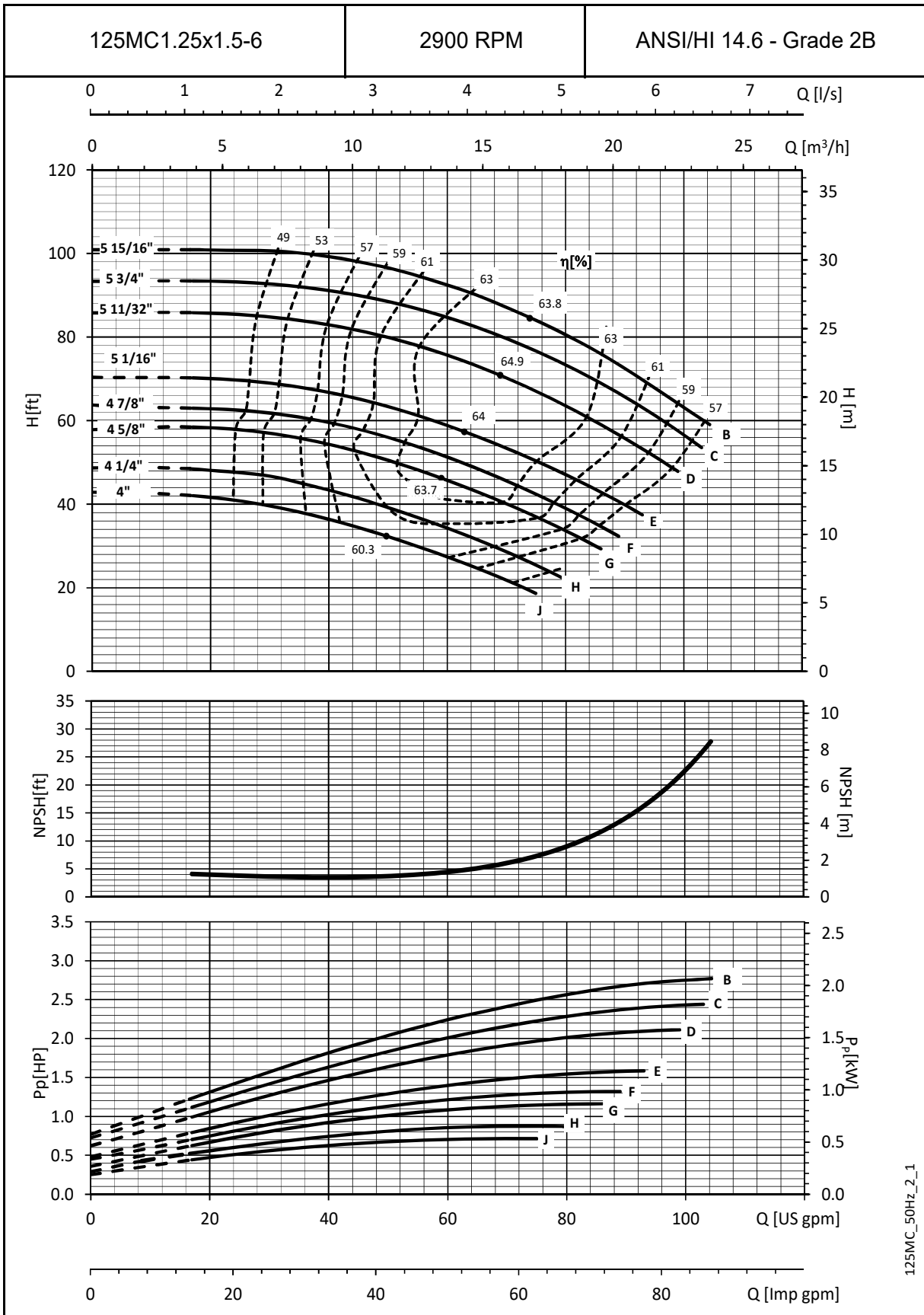
Performance curves – 60 Hz, 3500 RPM



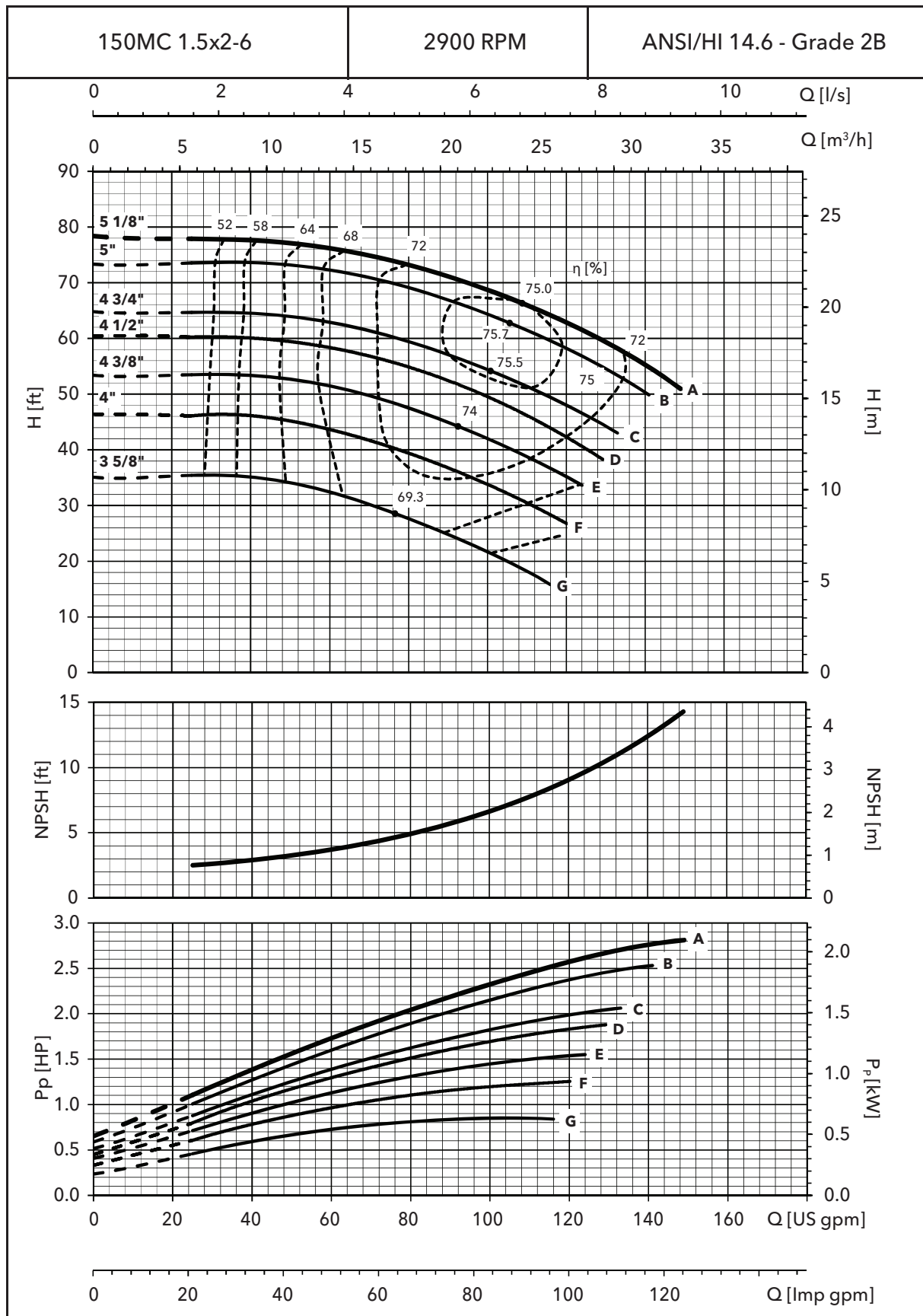
Performance curves – 50 Hz, 2900 RPM



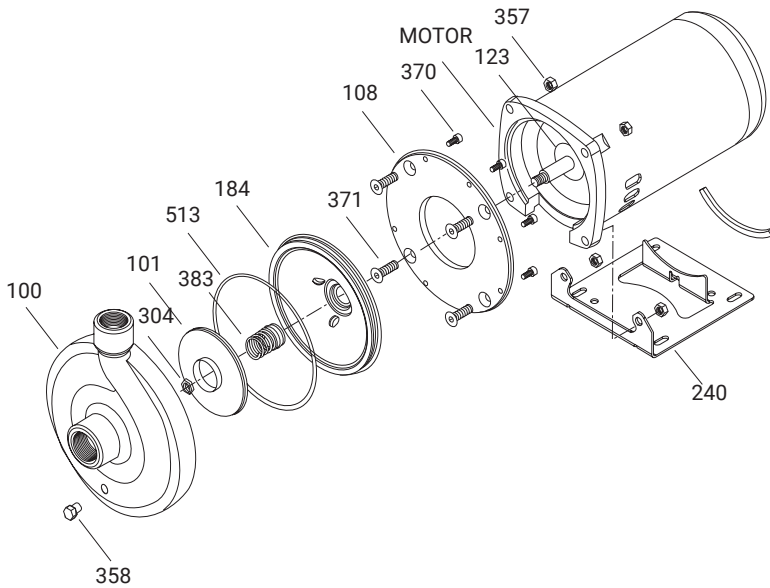
Performance curves – 50 Hz, 2900 RPM



Performance curves – 50 Hz, 2900 RPM

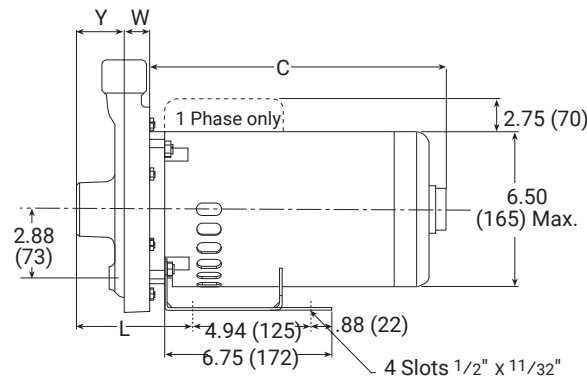
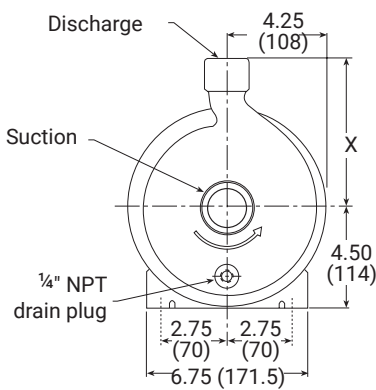


MCC close coupled pump major components: materials of construction



Item no.	Description	Materials
100	Casing	Cast iron
101	Impeller	AISI 316L SS
108	Motor adapter	Aluminium
123	Deflector	BUNA-N
184	Seal housing	AISI 316L SS
240	Motor support	Steel
	Rubber channel	Rubber
304	Impeller locknut	AISI 316 SS
357	Nut, motor	AISI 300 SS
358	Plug, drain	Steel plated
370	Socket head screws	AISI 410 SS
371	Bolts, motor	Steel
383	Mechanical seal	see chart
513	O-ring, casing	BUNA
Motor	NEMA standard, 56Y flange	

MCC close coupled – dimensions, weights and specifications



Clockwise rotation viewed from drive end.

Notes:

1. Pumps will be shipped with top vertical discharge as standard. For other orientations, remove casing screws, rotate to desired position, and tighten 1/4" screws to 5 – 6 lbs./ft. (6.8-8 N-m).
2. Dimensions in inches and millimeters (mm). Weight in pounds and kilograms (kg).
3. Motor dimensions may vary with motor manufacturer.
4. Not to be used for construction purposes unless certified.

Dimensions and weights – determined by pump

Pump	Suction	Discharge	HP	W	X	Y	L	Wt. less motor
100MC	1.25 (32)	1.00 (25)	3/4-3	1.12 (28)	6.25 (159)	2.00 (51)	4.38 (111)	10 (4.5)
125MC	1.50 (38)	1.25 (32)	1.50-7.50	1.41 (36)	6.25 (159)	2.00 (51)	4.67 (119)	11 (5)
150MC	2.00 (51)	1.50 (38)	1.50-5	1.36 (35)	6.25 (159)	2.00 (51)	4.62 (117)	13 (5.9)

Dimensions and weights – determined by motor

HP	Motor length and weights							
	1 Phase				3 Phase			
	ODP*		TEFC*		ODP*		TEFC*	
	C	Weight	C	Weight	C	Weight	C	Weight
1/2	9.88 (251)	21 (9.5)	11.34 (288)	34 (15.4)	9.79 (249)	19 (8.6)	8.60 (218)	20 (9.1)
3/4	10.63 (270)	26 (11.8)	11.59 (294)	33 (14.9)	9.79 (249)	25 (11.3)	10.34 (263)	21 (9.5)
1	10.88 (276)	28 (12.7)	12.09 (307)	37 (16.8)	9.79 (249)	26 (11.8)	10.84 (275)	30 (13.6)
1 1/2	11.13 (283)	28 (12.7)	12.59 (320)	42 (19)	10.54 (268)	28 (12.7)	11.09 (282)	33.75 (15.3)
2	11.73 (298)	40 (18.1)	12.84 (326)	42 (19)	11.04 (280)	34 (15.4)	11.81 (300)	36 (16.3)
3	12.48 (317)	43 (19.5)	13.34 (339)	48 (21.7)	12.29 (312)	34 (15.4)	12.56 (319)	41 (18.6)
5	13.14 (334)	49 (22.2)	—	—	13.79 (350)	46 (20.8)	—	—

* Premium efficiency where Department of Energy regulations apply.

MCC motor tables

100MC

Impeller dia.	Impeller code	Maximum power	Motor selection	Motor selection 1.0 SF
6.13	A	2.6	3	3
5.75	B	2.06	2	3
5.19	C	1.39	1.5	1.5
4.75	D	1.02	1	1.5
4.44	E	0.79	0.75	1

125MC

Impeller dia.	Impeller code	Maximum power	Motor selection	Motor selection 1.0 SF
5.94	B	4.9	5	5
5.75	C	4.3	5	5
5.34	D	3.7	5	5
5.06	E	2.8	3	3
4.88	F	2.2	2	3
4.63	G	2.0	2	2
4.25	H	1.5	1.5	1.5
4.00	J	1.3	1.5	1.5

150MC

Impeller dia.	Impeller code	Maximum power	Motor selection	Motor selection 1.0 SF
5.13	A	5.0	5	5
5.00	B	4.5	5	5
4.75	C	3.6	3	5
4.50	D	3.3	3	5
4.38	E	2.7	3	3
4.00	F	2.2	2	3
3.63	G	1.5	1.5	1.5

Specifications

Capacities to: 180 GPM (40.9 m³/hr) at 3500 RPM

Heads to: 156 feet (47.5 m) at 3500 RPM

Working pressures to: 75 PSIG (5 bars) 125 PSIG (9 bars) optional seals

Maximum temperatures to: 212°F (100°C)

Motor specifications*: NEMA 48 or 56 square flange frame. 3500 RPM ½ through 5 HP. Open drip-proof, ½ -3 HP totally enclosed fan-cooled enclosures. Stainless steel shaft with ball bearings.

Single phase*: Voltage 115/230 ODP and TEFC. (3 HP model – 230 V only) Built-in overload with auto-reset provided.

Three phase*: Voltage 208-230/460 ODP and TEFC.

Note: For three phase motors, overload protection must be provided in starter unit. Starter and heaters must be ordered separately.

* Premium efficiency where Department of Energy regulations apply.

Typical applications

Specifically designed for a broad range of general applications

- Water circulation
- Booster service
- Liquid transfer
- Spray system
- Chillers
- Washing/cleaning systems
- Injection molding cooling
- Air scrubbers
- Heat exchangers
- Filtration systems
- Jockey pumps
- OEM applications
- General water services



Learn more about
MCC pumps

Xylem Inc.
2881 East Bayard Street Ext.,
Suite A
Seneca Falls, NY 13148

Phone: (866) 325-4210
Fax: (888) 322-5877
www.xylem.com/goulds

Subject to change without notice. All information presented herein is believed reliable and in accordance with accepted engineering practices. Xylem makes no warranties as to the completeness of this information. Users are responsible for evaluating individual product suitability for specific applications. Xylem assumes no liability whatsoever for any special, indirect or consequential damages arising from the sale, resale or misuse of its products.

© 2025 Xylem is a registered trademark of Xylem Inc. or one of its subsidiaries. Goulds is a registered trademark of ITT Manufacturing Enterprises LLC and is used under license. All other trademarks or registered trademarks are the property of their respective owners.