



# CWK11/CWK12

UNASSEMBLED RIBBED POLYETHYLENE BASIN KITS

### FEATURES

Ribbed polyethylene basin for strength and durability.

Eight (8) bolt structural foam cover is strong and corrosion resistant.

Vent grommets for both 2" and 3" vent provided. Adds system flexibility and reduces inventory.

Inlet Hub is a molded-in, slip-fit type for fast, easy connection using flexible, slip-fit connectors and clamps (not included).

Vent, discharge and cord holes all pre-drilled.

Torque stop insert to stabilize the pump.

Swing type 2" check valve:

- A9-2PH rubber sleeve type
- A9-2P compression type

Schedule 40, 2" PVC discharge pipe with 1/8" bleed hole.

### APPLICATIONS

Specially designed for the following uses:

- Homes, rural water districts, parks and dewatering
- Sewage lift station
- Anywhere waste or drainage must be disposed of quickly, quietly and efficiently
- Waste drainage in new additions below sewer line.

### SPECIFICATIONS

#### Basin:

- Ribbed polyethylene
- Usable capacity: 24.8 gallons
- Dimensions: 23" w x 30" h
- Inlet: 4" slip fit hub for fast, easy connection
- Shipping weight: 46 lbs.

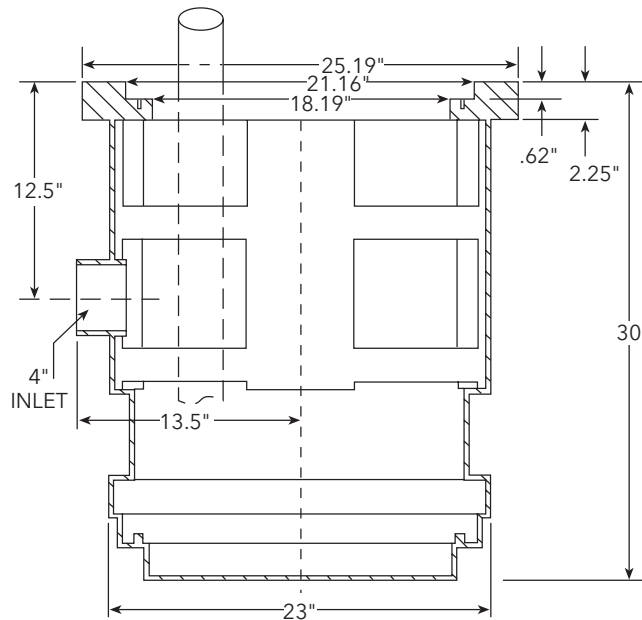
### 23" X 30" RIBBED POLY BASIN WITH 18" STRUCTURAL FOAM COVER

Kit Order Number		Basin	Cover	Check Valve	Discharge Pipe	Torque Stop Insert
CWK11	Includes	Ribbed polyethylene 23" dia. x 30" deep basin with 4" slip fit inlet hub	18" structural foam cover with (8) bolts, seal tape, cord grommet, and (2) 2" and (1) 3" vent and discharge grommets	2" rubber sleeve type model A9-2PH	Sch 40 PVC 2" dia. x 30" long discharge pipe	Basin torque stop insert
CWK12				2" compression type model A9-2P		

### BASIN KIT COMPONENTS

	<u>Replacement Part Order Number*</u>
• Ribbed Polyethylene Basin 23" x 30" (uses 18" diameter cover).	A7RP2330
• Structural Foam 18" Diameter Cover Assembly (includes bolts, seal tape, cord grommet and (1) 3" and (2) 2" grommets).	A8SF18
• Swing Style Check Valve (2 choices)	
• 2" Compression Type	A9-2P
• 2" Full Flow Rubber Sleeve Style	A9-2PH
• Sch 40 PVC Discharge Pipe 2" D x 30" L	ADP2030
• Ribbed Basin 23" Torque Stop Insert	ATS23
• Vent and Discharge Grommets* (to purchase separately from cover assembly).	
• 2" (pipe) x 4" (cover hole) Grommet	*A8-24U
• 3" (pipe) x 4" (cover hole) Grommet	*A8-3U

\* These order numbers should only be used to order replacement parts as it will be much less expensive to order the "kit" versus all components.



# Xylem |'zīləm|

- 1) The tissue in plants that brings water upward from the roots;
- 2) a leading global water technology company.

We're 12,500 people unified in a common purpose: creating innovative solutions to meet our world's water needs. Developing new technologies that will improve the way water is used, conserved, and re-used in the future is central to our work. We move, treat, analyze, and return water to the environment, and we help people use water efficiently, in their homes, buildings, factories and farms. In more than 150 countries, we have strong, long-standing relationships with customers who know us for our powerful combination of leading product brands and applications expertise, backed by a legacy of innovation.

**For more information on how Xylem can help you, go to [www.xyleminc.com](http://www.xyleminc.com)**



Xylem, Inc.  
2881 East Bayard Street Ext., Suite A  
Seneca Falls, NY 13148  
Phone: (866) 325-4210  
Fax: (888) 322-5877  
[www.xyleminc.com/brands/centripro](http://www.xyleminc.com/brands/centripro)

CentriPro is a trademark of Xylem Inc. or one of its subsidiaries.  
© 2012 Xylem, Inc. BCPCWK11 R5 April 2012