



Marlow Series 20EVP

VERTICAL IN-LINE SELF-PRIMING CENTRIFUGAL PUMPS
FOR PETROLEUMS AND SOLVENTS



STANDARD UNIT INCLUDES:

PUMP: Heavy-duty cast iron construction, with 2" NPT female threaded, in-line suction and discharge ports. This compact, vertical design is self-supporting and requires a minimum of floor space.

The self-priming feature allows the pump to be mounted above the liquid and suction lifts of 10' to 20' can be achieved, depending on the liquid and the pump model. Diffuser priming eliminates the need for a check valve and reduces radial loads insuring longer bearing life.

These pumps are sealed by a self-lubricating, Viton mechanical shaft seal. When used on a suction lift any leakage that may occur will be down into the pump rather than up the motor shaft as the seal is on the suction side of the impeller.

MOTOR: Single phase motors are 60 cycle, 115/230 volt, except 2 HP explosion proof motors which are 230 volt only. Three phase motors are 60 cycle, 230/460 volt and all are 3450 RPM motors. All explosion proof motors are Class I, Group D, Code: T3B.

OPTIONAL MOUNTING: All models fit the Marlow Pumps lightweight, two wheel chassis. Kit illustrated in Section 800.

OPTIONAL SEAL: Kalrez mechanical seals are available. Contact factory for more information.

PERFORMANCE

Capacity in U.S. Gallons per Minute											
Pump Model	Size	Total Head in Feet									
		10	20	30	40	50	60	70	80	90	100
20EVP	9A	–	112	93	72	23	–	–	–	–	–
	10A	–	–	63	58	51	36	12	–	–	–
	11A	–	103	94	84	72	55	15	–	–	–
	12A	–	115	108	100	90	78	65	41	–	–
	17A	–	121	120	116	110	102	91	77	60	32

NOTE: Capacities listed are for 5 ft. dynamic suction lift. With higher lifts, capacities will be lower and on flooded suction, capacities will be higher.

STANDARD CONSTRUCTION

- Casing – Close Grained Cast Iron
- Base – Close Grained Cast Iron
- Impeller – Nickel Plated Cast Iron
- Diffuser – Nickel Plated Cast Iron
- Shaft Seal – $\frac{5}{8}$ " Viton, Stainless and Brass, Self-Lubricating

SPECIFICATIONS

- Pump Tank Capacity – 1 Gallon
- Priming Connection – 1" (Plugged)
- Drain Connection – $\frac{3}{8}$ " (Plugged)
- Working Pressure – 100 PSI

Elastomers – Model EVP – Viton

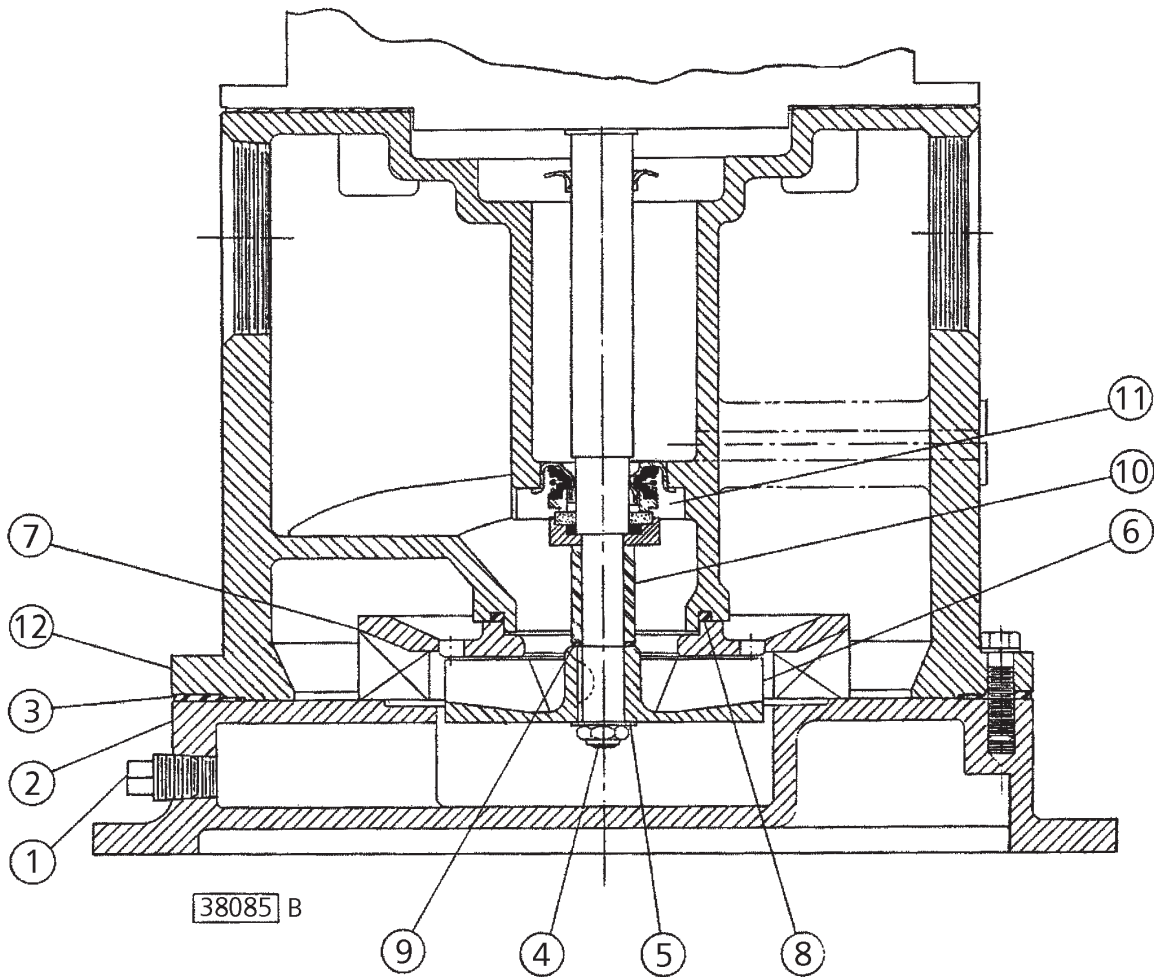
MAXIMUM STATIC SUCTION LIFT

Cold, Clear Water at Sea Level					
Model	9A	10A	11A	12A	17A
S.L. in Feet	12	14	11	20	20

TYPE IMPELLER AND SOLIDS SIZE

Pump Sizes					
Type Impeller	9A Open	10A Closed	11A	12A	17A
Maximum Size Solids Handled	$\frac{7}{16}$ "	$\frac{3}{16}$ "	$\frac{3}{16}$ "	$\frac{3}{16}$ "	$\frac{3}{16}$ "

CROSS SECTION

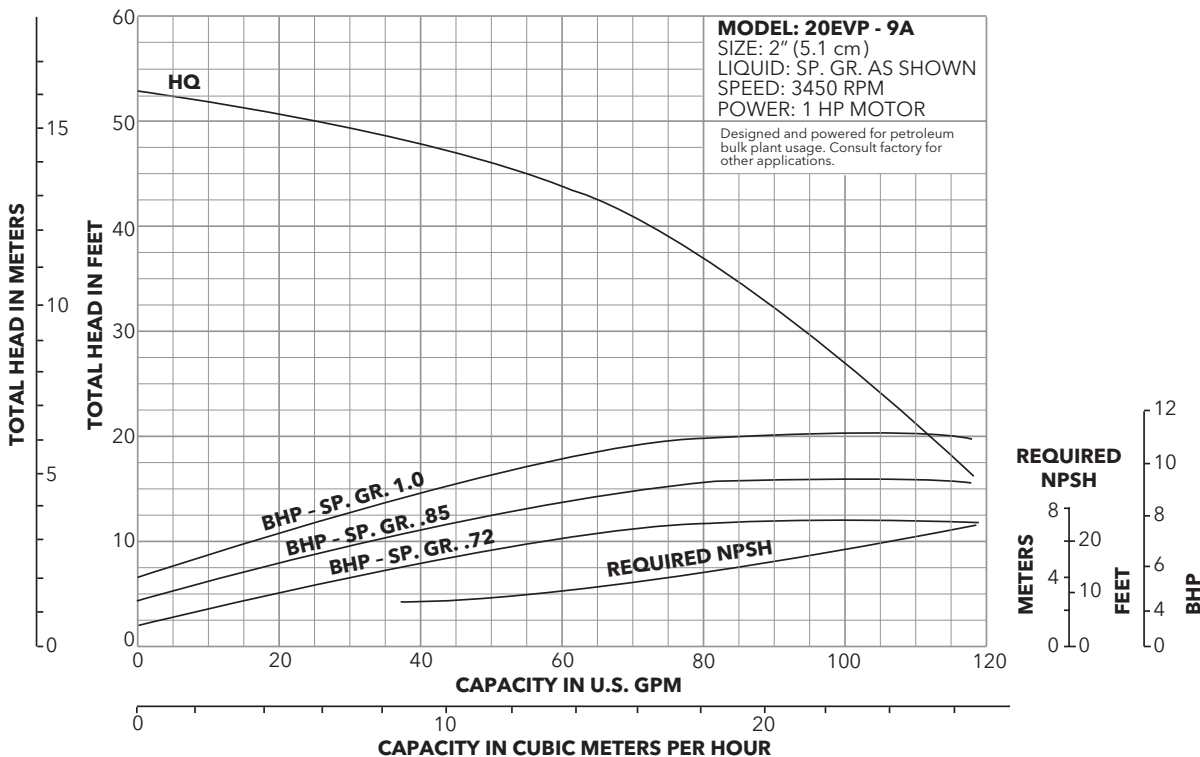
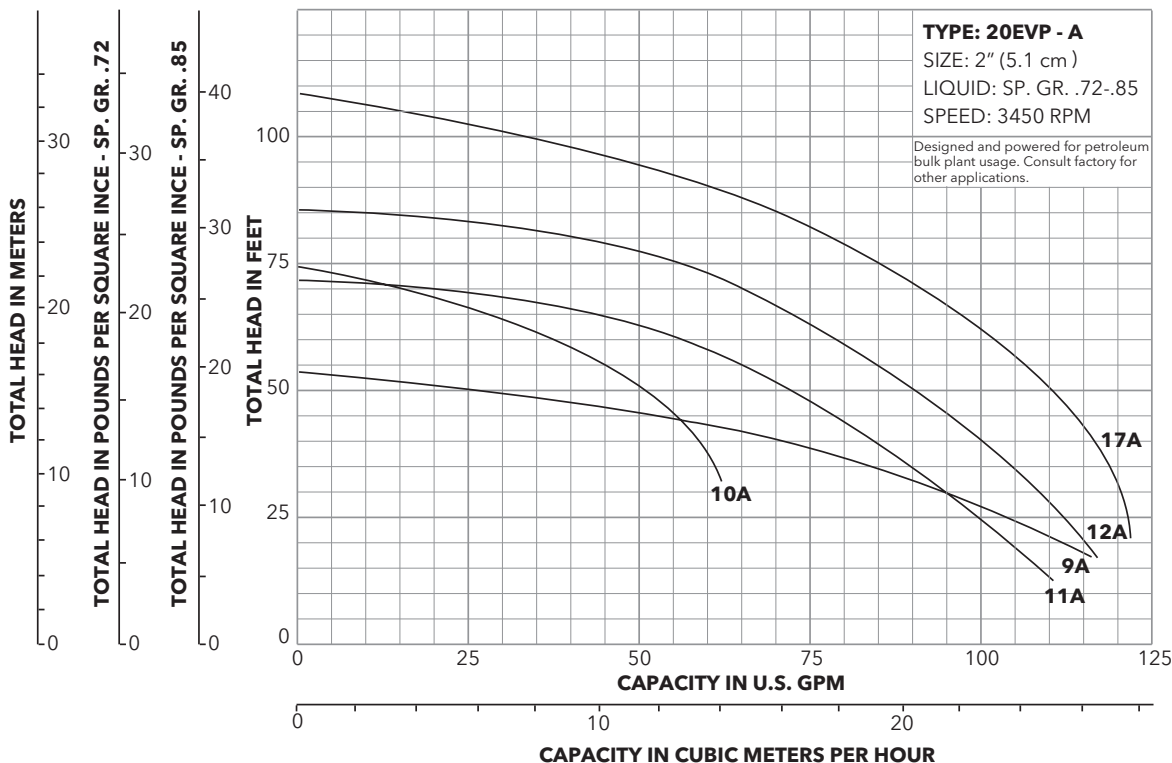


Key	Description	Key	Description
1	Drain Plug	7	Diffuser
2	Cover	8	Gasket, Diffuser
3	Gasket, Cover	9	Impeller Shim
4	Impeller Nut	10	Impeller Spacer
5	Impeller Washer	11	Seal Assembly
6	Impeller	12	Tank

PERFORMANCE CURVES

EVP-A Units Designed and Powered for Petroleum Bulk Plant Usage

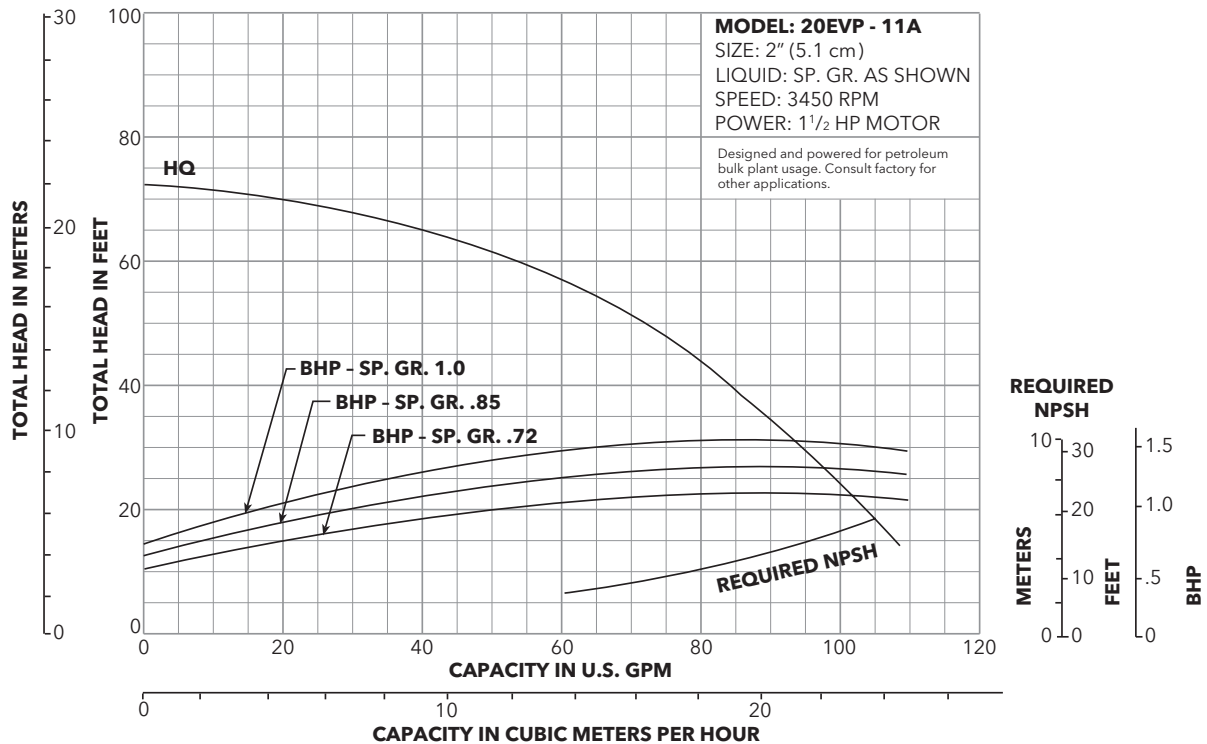
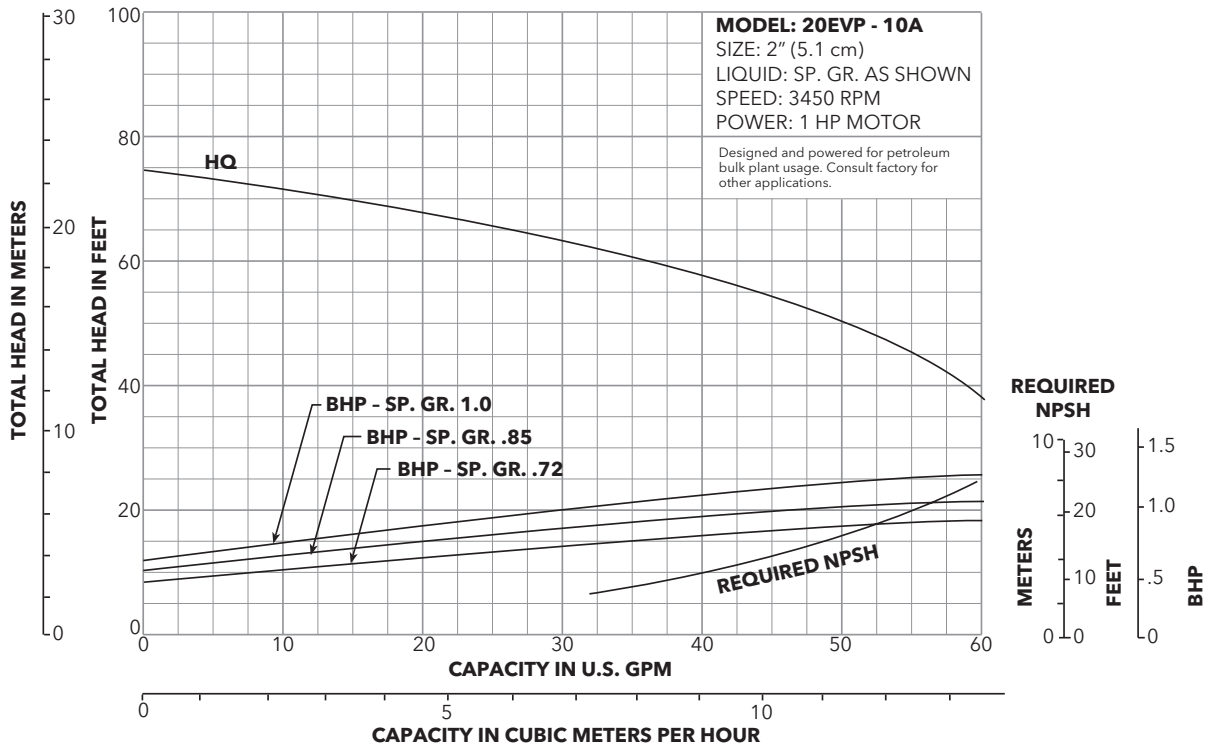
The performance curves shown in this manual and other published literature were taken from actual tests of standard production pumps and reflect an average performance of the pumps indicated.



PERFORMANCE CURVES

EVP-A Units Designed and Powered for Petroleum Bulk Plant Usage

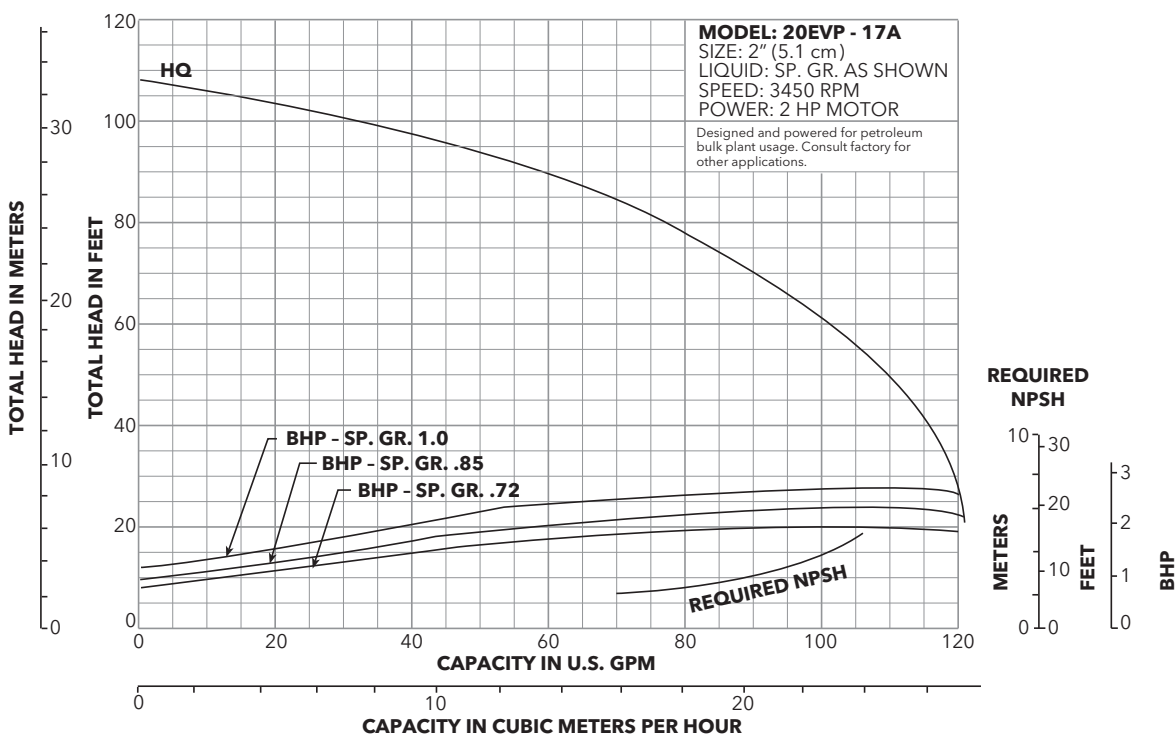
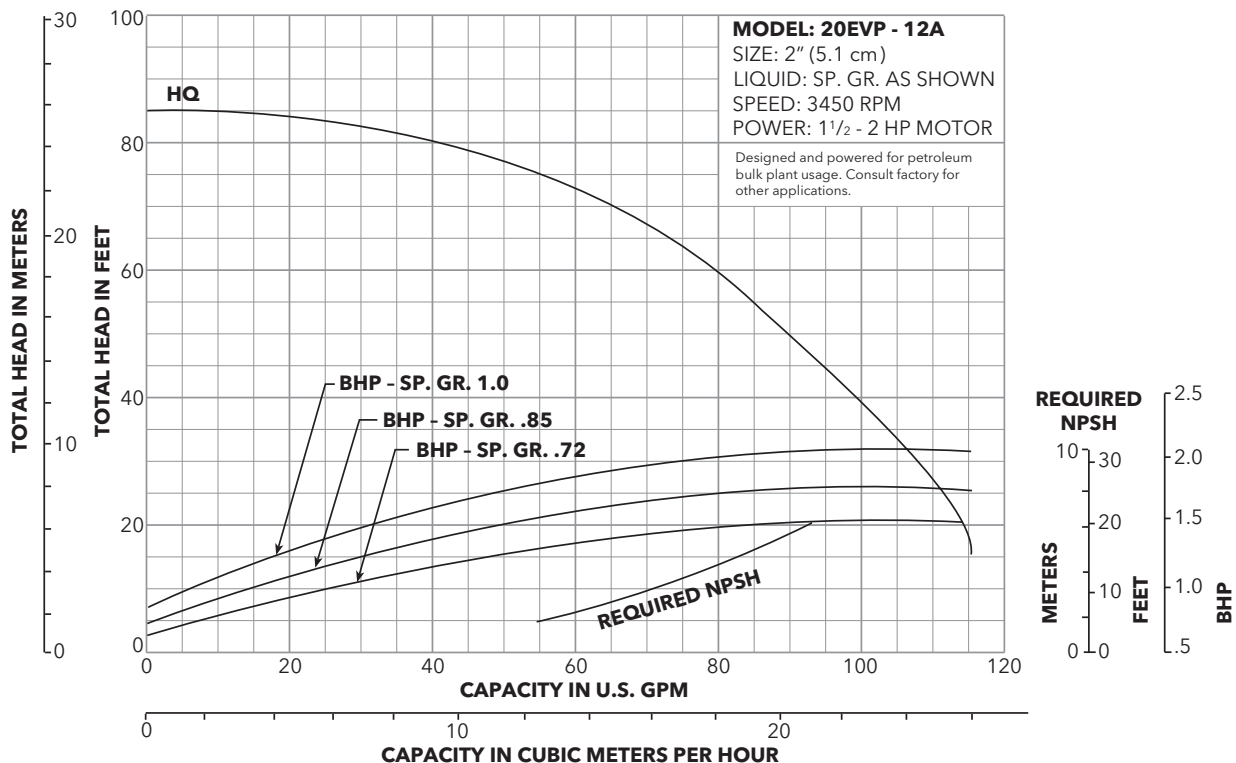
The performance curves shown in this manual and other published literature were taken from actual tests of standard production pumps and reflect an average performance of the pumps indicated.



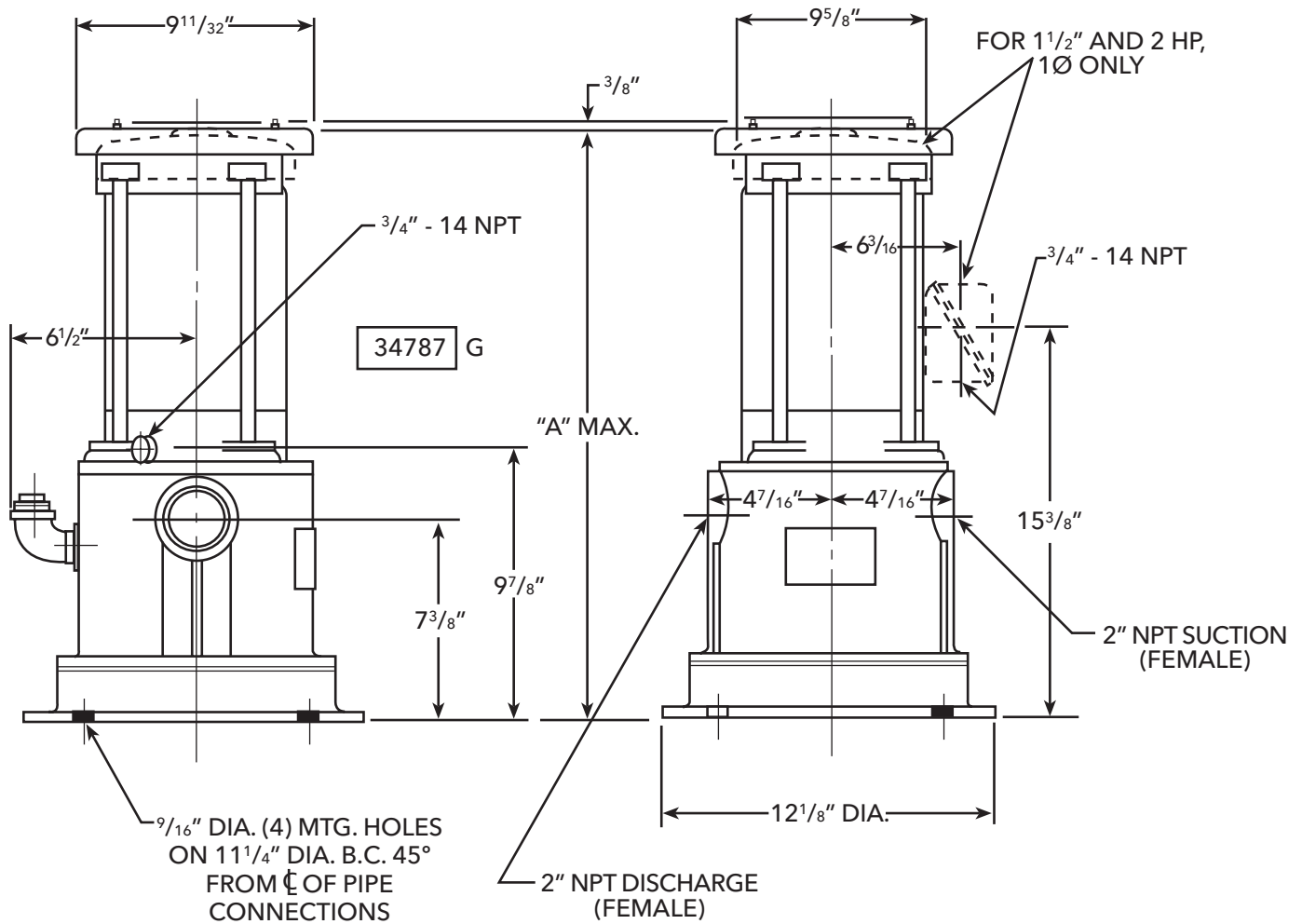
PERFORMANCE CURVES

EVP-A Units Designed and Powered for Petroleum Bulk Plant Usage

The performance curves shown in this manual and other published literature were taken from actual tests of standard production pumps and reflect an average performance of the pumps indicated.



DIMENSIONS



Dimensions shown in inches

Explosion Proof Motor			
HP	Phase	Cycle	A
1	1	60	24.8
	3		23.8
1.5	1		24.8
	3		24.8
2	1		25.685
	3		25.685

Dimensions may vary by manufacturer.

NOTE: These dimensions are not to be used for construction purposes without formal factory approval.

Xylem |'zīləm|

- 1) The tissue in plants that brings water upward from the roots;
- 2) a leading global water technology company.

We're a global team unified in a common purpose: creating advanced technology solutions to the world's water challenges. Developing new technologies that will improve the way water is used, conserved, and re-used in the future is central to our work. Our products and services move, treat, analyze, monitor and return water to the environment, in public utility, industrial, residential and commercial building services settings. Xylem also provides a leading portfolio of smart metering, network technologies and advanced analytics solutions for water, electric and gas utilities. In more than 150 countries, we have strong, long-standing relationships with customers who know us for our powerful combination of leading product brands and applications expertise with a strong focus on developing comprehensive, sustainable solutions.

For more information on how Xylem can help you, go to www.xylem.com



Xylem Inc.
2881 East Bayard Street Ext., Suite A
Seneca Falls, NY 13148
Phone: (800) 453-6777
Fax: (888) 322-5877
www.xylem.com/goulds

Xylem is a registered trademark of Xylem Inc. or one of its subsidiaries. Goulds is a registered trademark of ITT Manufacturing Enterprises LLC and is used under license. All other trademarks or registered trademarks are property of their respective owners.
© 2022 Xylem Inc. B20EVP R3 November 2022