



**REPAIR PARTS**

R50-320L R5

---

# 50-320L REPAIR PARTS



Item No.	Part Description	Current Models							
		HP	50L	65L	95L	120L	160L	250L	320L
	Number of Stages	3	4	3	3	–	1	–	–
		5R	7	–	–	–	–	–	–
		5	8	5	5	2	2	–	–
		7.5	11	7	7	3	3	2	2
		10	15	10	10	5	4	3	–
		15	23	16	14	7	6	5	4
		20	28	21	17	10	8	7	5
		25	–	27	21	12	9	8	6
		30	–	*32	*28	15	11	9	8
		40	–	*41	–	20	15	13	11
		50	–	–	–	*24	18	16	13
		60	–	–	–	–	20	19	16
1	Check Valve Kit (contains: seat valve, seat ring, valve, o-rings (EPDM), thrust bearing support)	7L507							
2	Shaft Coupling Kit	7L434 (4" MTR), 7L435 (6" MTR)							
3	Impeller Bolt Kit (contains: initial spacer, impeller bolt and washer)	7L509							
4	3" Discharge Head	7L378						NA	
	4" Discharge Head	NA						7L508	
5	Motor Adapter with Strainer	7L379 (4" MTR), 7L380 (6" MTR)							
6	Impeller	7L520	7L377	7L372	7L373	7L374	7L375	7L376	
7	Diffuser without Bushing	7L381			7L382		7L383		
8	Diffuser with Tungsten Bushing	7L389			7L384		7L385		
9	Initial Stage	7L386			7L387		7L388		
10	Thrust Bearing	7L510			7L511		7L512		
11	Tungsten Carbide Bearing	7L513							
12	Impeller Spacer	7L517			7L518		7L519		
13	Bearing Stage Spacer	7L514			7L515		7L516		
14	Shaft	HP	50L	65L	95L	120L	160L	250L	320L
		3	7L394	7L392	7L392	–	7L530	–	–
		5R	7L397	–	–	–	–	–	–
		5	7L398	7L395	7L395	7L391	7L391	–	–
		7.5	7L402	7L397	7L397	7L393	7L393	7L394	7L394
		10	7L527	7L401	7L401	7L396	7L395	7L396	–
		15	7L528	7L407	7L405	7L400	7L398	7L403	7L399
		20	7L417	7L412	7L409	7L405	7L402	7L408	7L403
		25	–	7L416	7L412	7L409	7L404	7L410	7L405
		30	–	NA	NA	7L411	7L406	7L411	7L410
		40	–	NA	–	7L417	7L411	7L418	7L415
50	–	–	–	NA	7L414	7L419	7L418		
60	–	–	–	–	7L417	7L533	7L419		
15	Tie rods	3	7L472	7L471	7L471	–	7L531	–	–
		5R	7L474	–	–	–	–	–	–
		5	7L475	7L473	7L473	7L470	7L470	–	–
		7.5	7L478	7L474	7L474	7L484	7L484	7L472	7L472
		10	7L527	7L477	7L477	7L485	7L473	7L485	–
		15	7L528	7L465	7L479	7L486	7L475	7L490	7L476
		20	7L480	7L468	7L466	7L479	7L478	7L491	7L490
		25	–	7L482	7L468	7L466	7L487	7L467	7L479
		30	–	NA	NA	7L489	7L488	7L489	7L467
		40	–	NA	–	7L480	7L489	7L493	7L492
50	–	–	–	NA	7L481	7L483	7L493		
60	–	–	–	–	7L480	7L535	7L483		
16	Cable guard	3	7L441	7L440	7L440	–	7L532	–	–
		5R	7L443	–	–	–	–	–	–
		5	7L444	7L442	7L442	7L439	7L439	–	–
		7.5	7L447	7L443	7L443	7L458	7L458	7L441	7L441
		10	7L524	7L446	7L446	7L459	7L442	7L459	–
		15	7L525	7L449	7L448	7L460	7L444	7L453	7L445
		20	7L464	7L452	7L450	7L448	7L447	7L454	7L453
		25	–	7L438	7L452	7L450	7L461	7L451	7L448
		30	–	NA	NA	7L463	7L462	7L463	7L451
		40	–	NA	–	7L464	7L463	7L456	7L455
50	–	–	–	NA	7L437	7L457	7L456		
60	–	–	–	–	7L464	7L534	7L457		

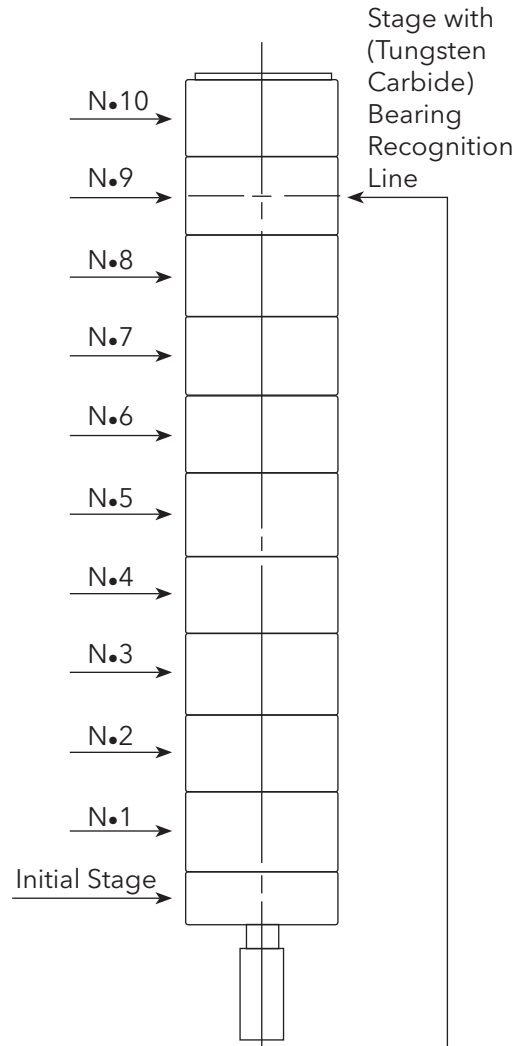
\* High pressure models have an exterior lining and larger diameters.

## Residential Water Systems

50L	65L	95L	Bearing Pos. (see note)	# of Bearings
Stages				
--	3	3	N.4	1
4	--	--	N.5	
--	5	5	N.6	
7	7	7	N.7	
8	--	--	N.8	
--	10	10	N.10	
11	--	--	N.10	
--	--	14	N.13	
15	--	--	N.13	
--	16	--	N.14	
--	--	17	N.15	
--	21	21	N.9 & 22	2
23	--	--	N.10 & 24	
27	27	--	N.12 & 27	
--	--	*28	N.12 & 28	
--	*32	--	N.7&19, N.3&15	4
--	*41	--	N.9&23, N.1&14	

120L	160L	Bearing Pos. (see note)	# of Bearings
Stages			
--	1	N.1	1
2	2	N.2	
3	3	N.3	
--	4	N.4	
5	--	N.4	
--	6	N.5	
7	--	N.6	
--	8	N.7	
--	9	N.8	
10	--	N.9	
--	11	N.9	2
12	--	N.5 & 12	
15	15	N.6 & 14	
--	18	N.7 & 17	3
20	20	N.5, 13 & 21	
*24	--	N.6, 15 & 23	

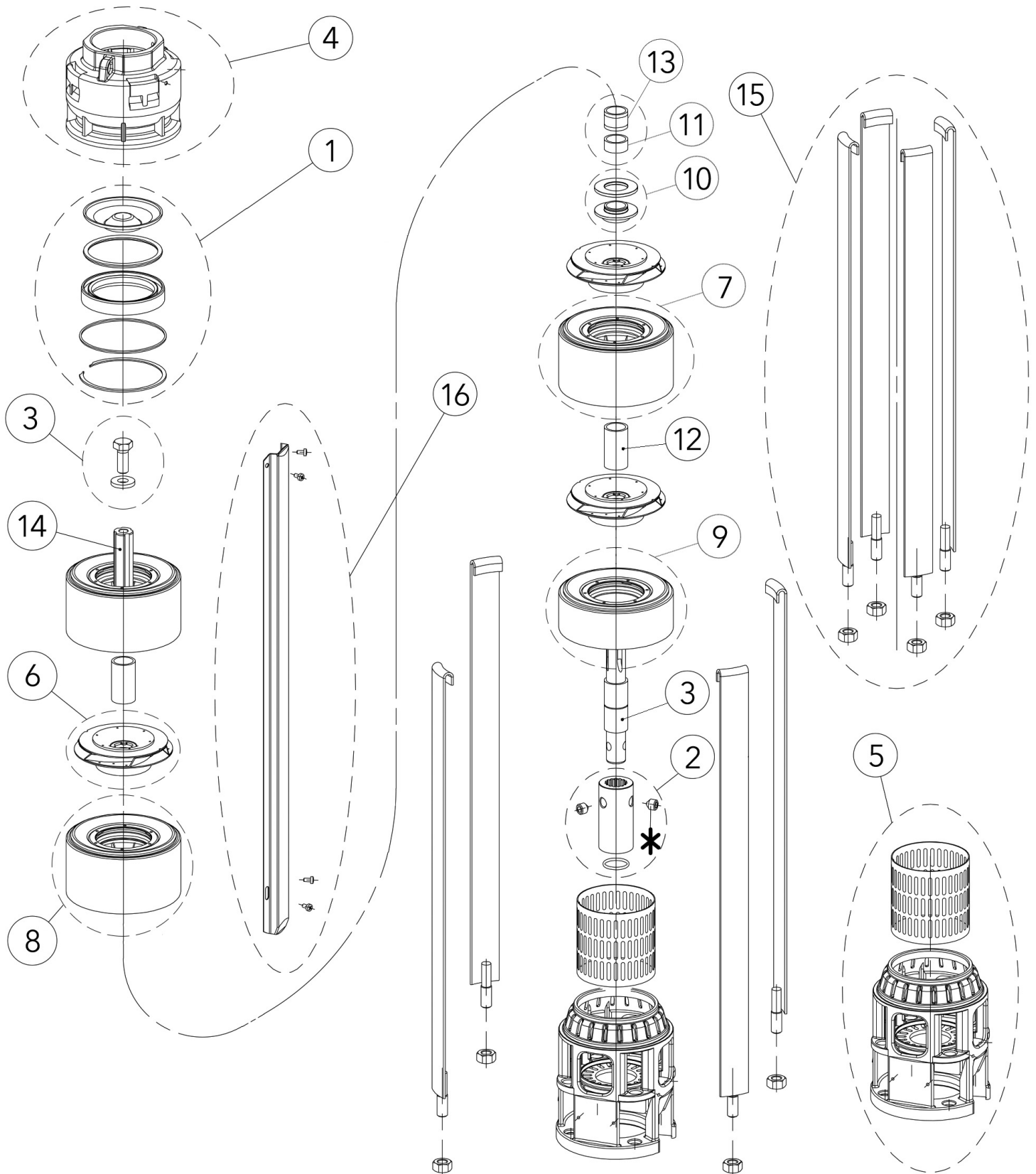
250L	320L	Bearing Pos. (see note)	# of Bearings
Stages			
2	2	N.2	1
3	--	N.3	
--	4	N.4	
5	5	N.4	
--	6	N.5	
7	--	N.6	2
8	8	N.3 & 8	
9	--	N.4 & 9	
--	11	N.4 & 10	3
13	13	N.3, 8 & 13	
16	16	N.4, 10 & 16	
19	--	N.4, 10 & 18	



Example: 120L20 10-stage pump bearing located in position N.9.

**NOTE:** When counting stages for bearing position, the chart does not include the initial stage, it is not counted. Ex. N.6 would be the 7th stage up from the bottom.

\*High pressure models have an exterior lining and larger diameters.



**xylem**  
Let's Solve Water

Xylem Inc.  
2881 East Bayard Street Ext., Suite A  
Seneca Falls, NY 13148  
Phone: (800) 453-6777  
Fax: (888) 322-5877  
[www.xylem.com/goulds](http://www.xylem.com/goulds)

Xylem is a registered trademark of Xylem Inc. or one of its subsidiaries. Goulds is a registered trademark of ITT Manufacturing Enterprises LLC and is used under license. All other trademarks or registered trademarks are property of their respective owners.  
© 2023 Xylem Inc. R50-320L R5 August 2023