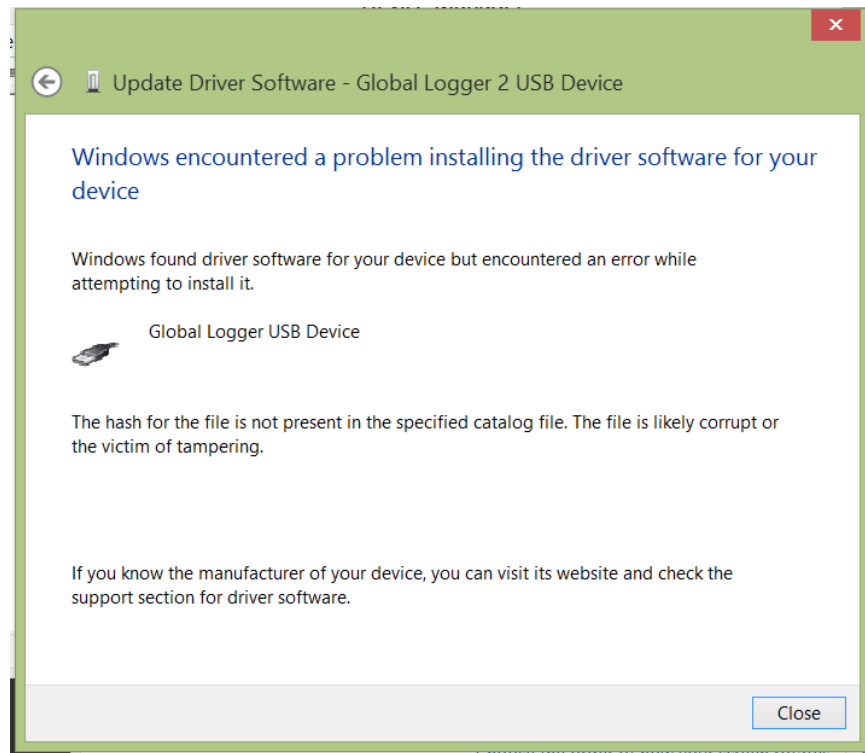


# Installing and Uninstalling Global Logger USB Drivers in Windows 8 32- and 64-bit Operating Systems

## Installing Global Logger USB Drivers

For 32-bit Windows 8, skip to the section labeled, “Continue with Driver Installation”. For 64-bit Windows 8, start the process here.

At the time of this writing, the Global Water USB drivers are not Microsoft Signature Certified. If the steps below are NOT followed, then an error message will appear during the install to Windows 8 64-bit as shown here:



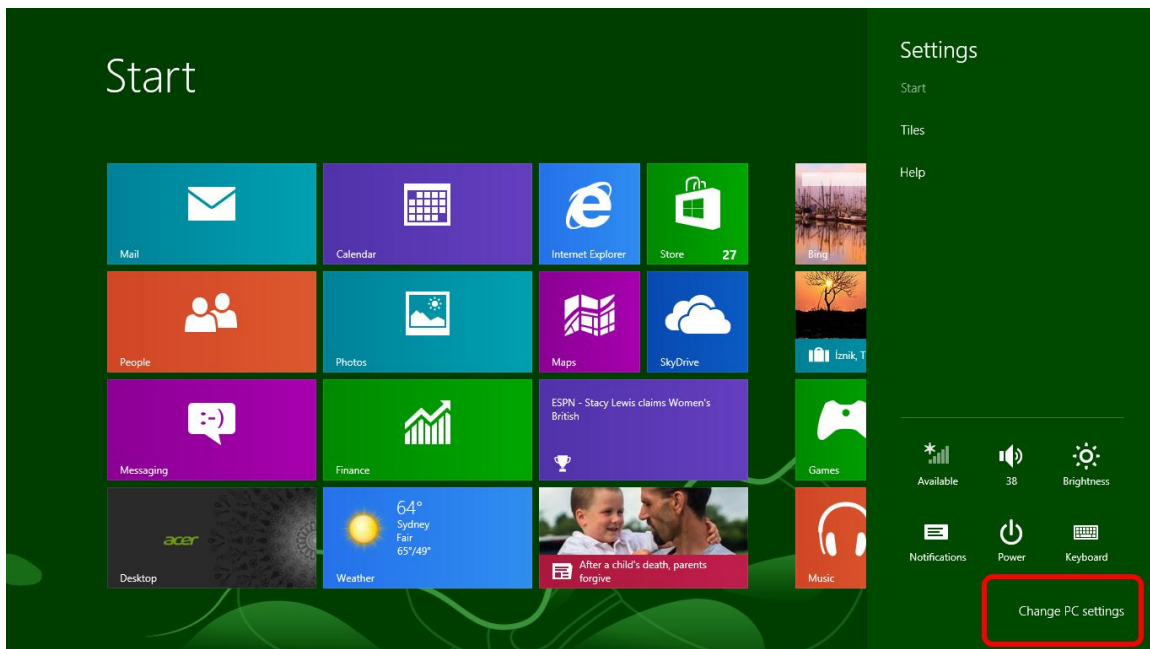
In order to install the drivers, it is necessary to temporarily override Windows 8 64-bit default behavior, and set Windows to bypass driver signature checking during installation. To do that, proceed as described below.

# Installing and Uninstalling Global Logger USB Drivers in Windows 8 32- and 64-bit Operating Systems

Swipe along the right side of display to open Charms bar, select Settings.

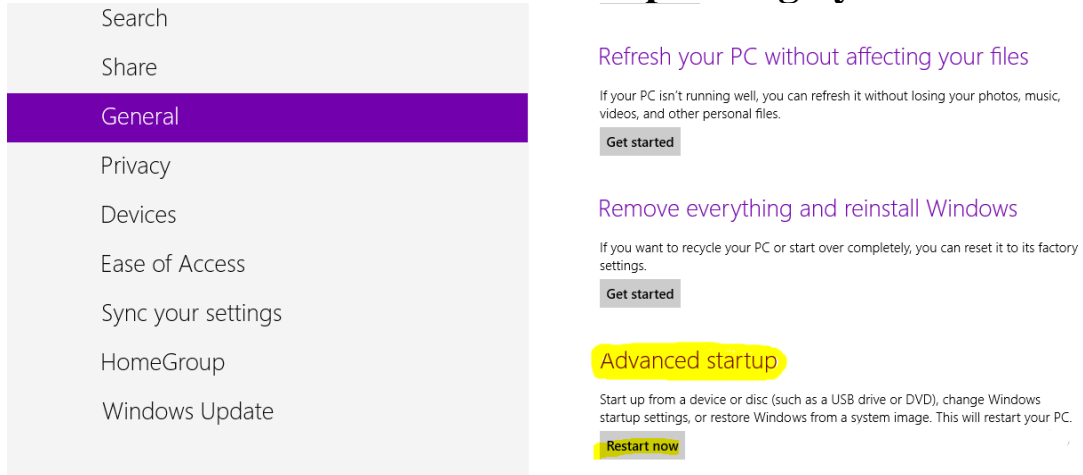


Select Change PC Settings.

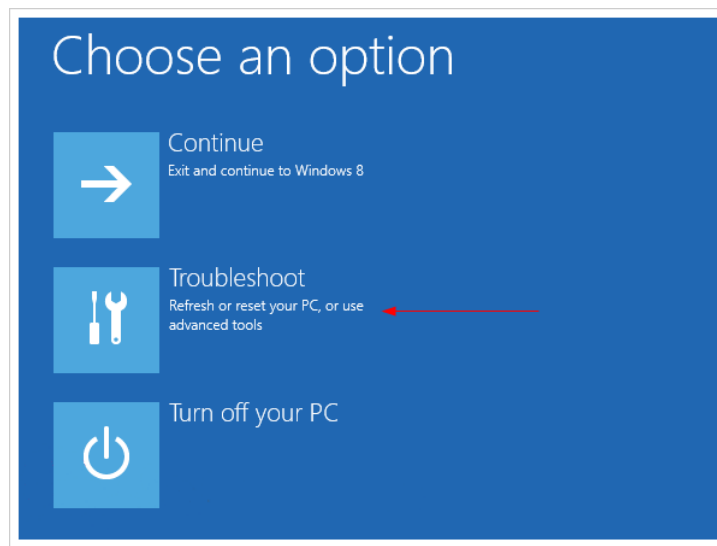


Choose General. Scroll to the bottom and select Restart Now under the Advanced Settings screen.

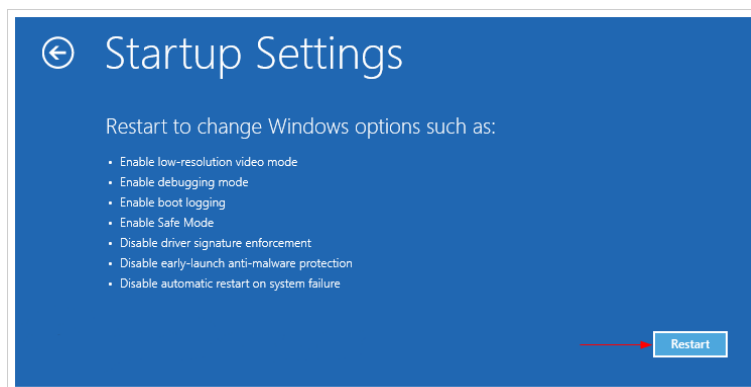
# Installing and Uninstalling Global Logger USB Drivers in Windows 8 32- and 64-bit Operating Systems



Proceed, and when the Choose an Option screen appears, select Troubleshoot.



Select Advanced Options, then select Startup Settings. Select Restart.



## **Installing and Uninstalling Global Logger USB Drivers in Windows 8 32- and 64-bit Operating Systems**

When prompted, use the F7 key or number 7 key on the keyboard to select “Disable driver signature enforcement”. This will be in effect until you reboot the system again.

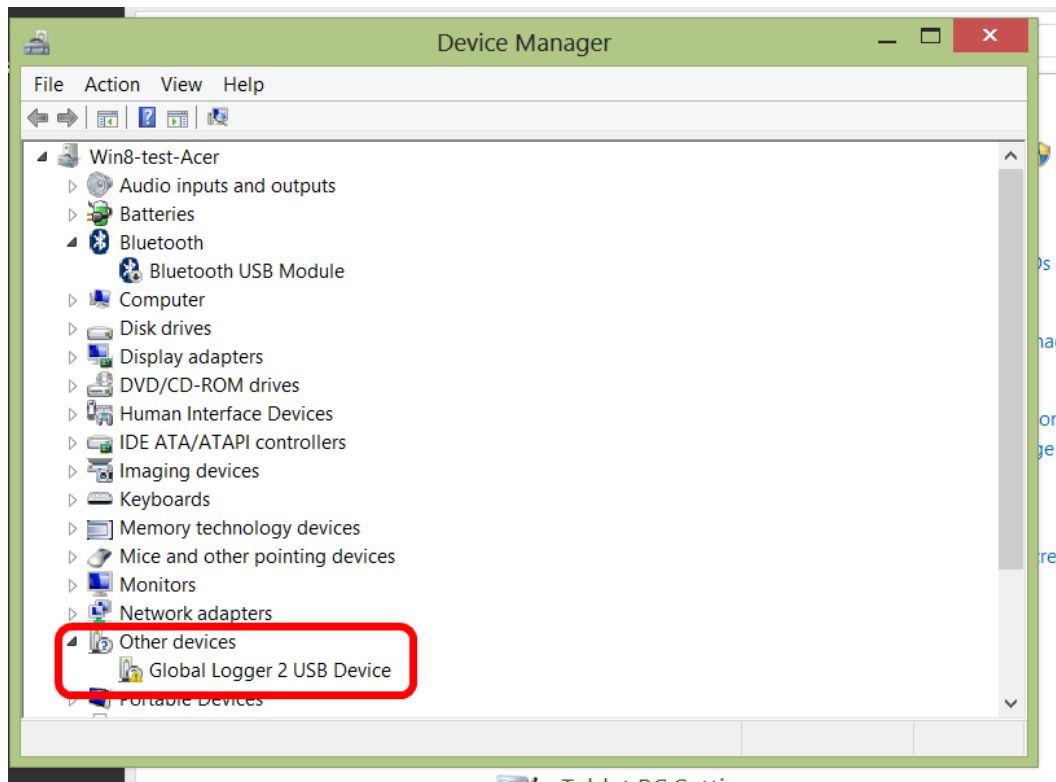


Now you will be able to install the drivers provided by GWI.

# Installing and Uninstalling Global Logger USB Drivers in Windows 8 32- and 64-bit Operating Systems

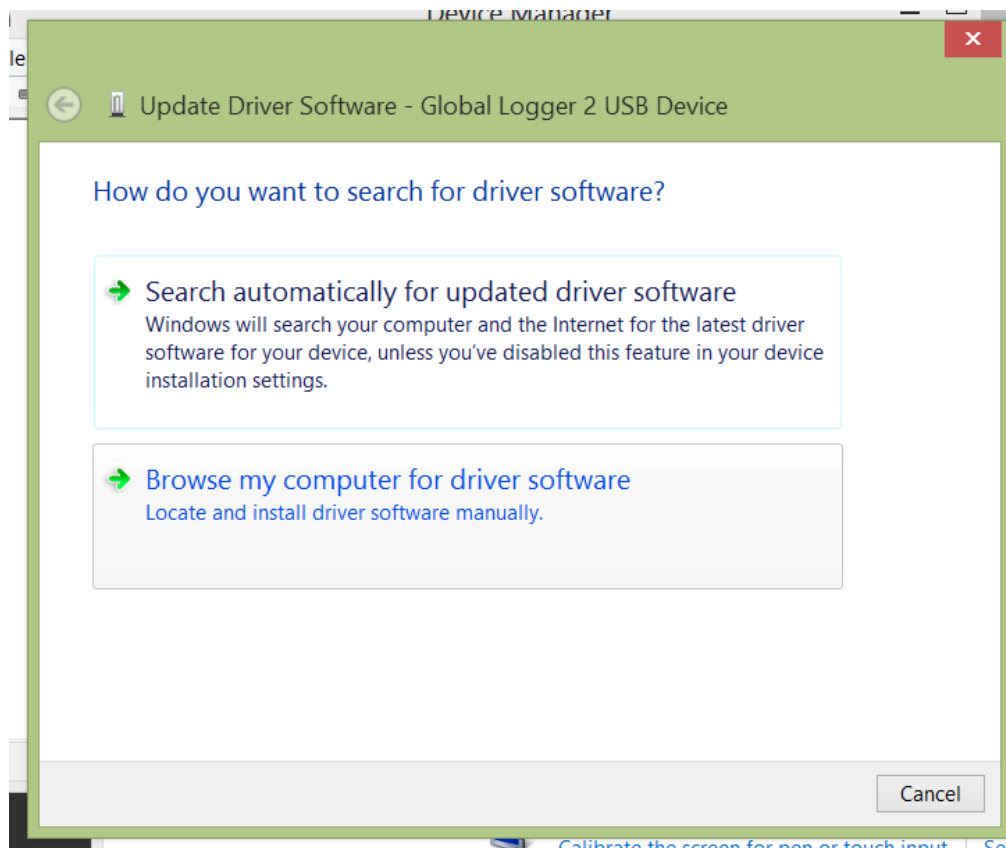
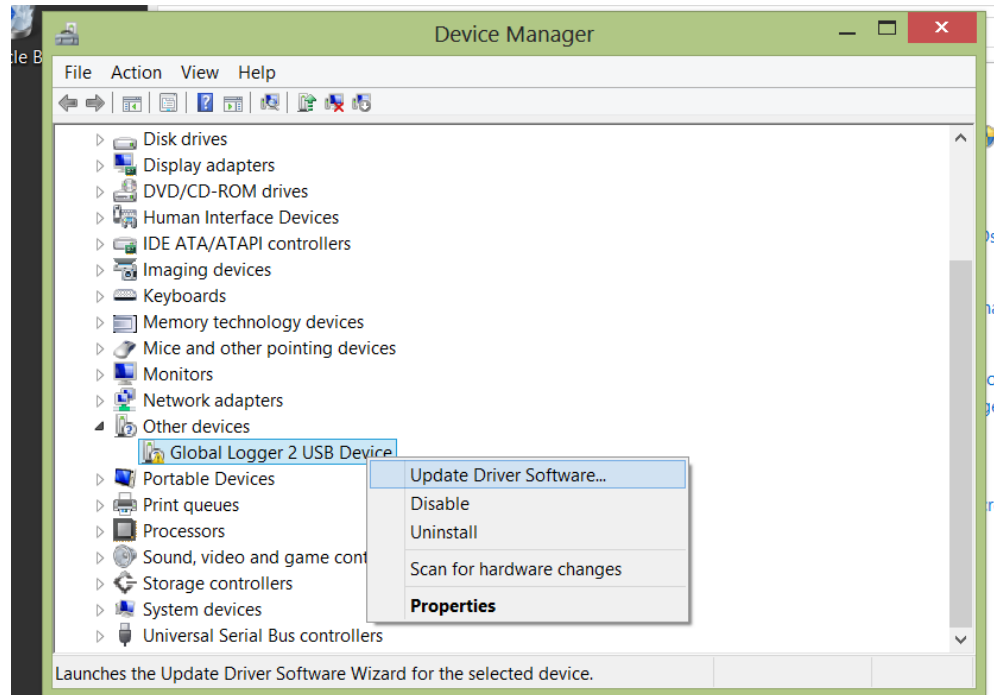
## Continue with Driver Installation

Plug the Global Water data logger device in to an unused USB port on the computer. Open the Device Manager. (The Device Manager can be opened in Windows 8 as described below.) Cancel any prompts that appear. The Global Logger USB Device appears in the Other Devices section. Right click and select Update Driver Software.



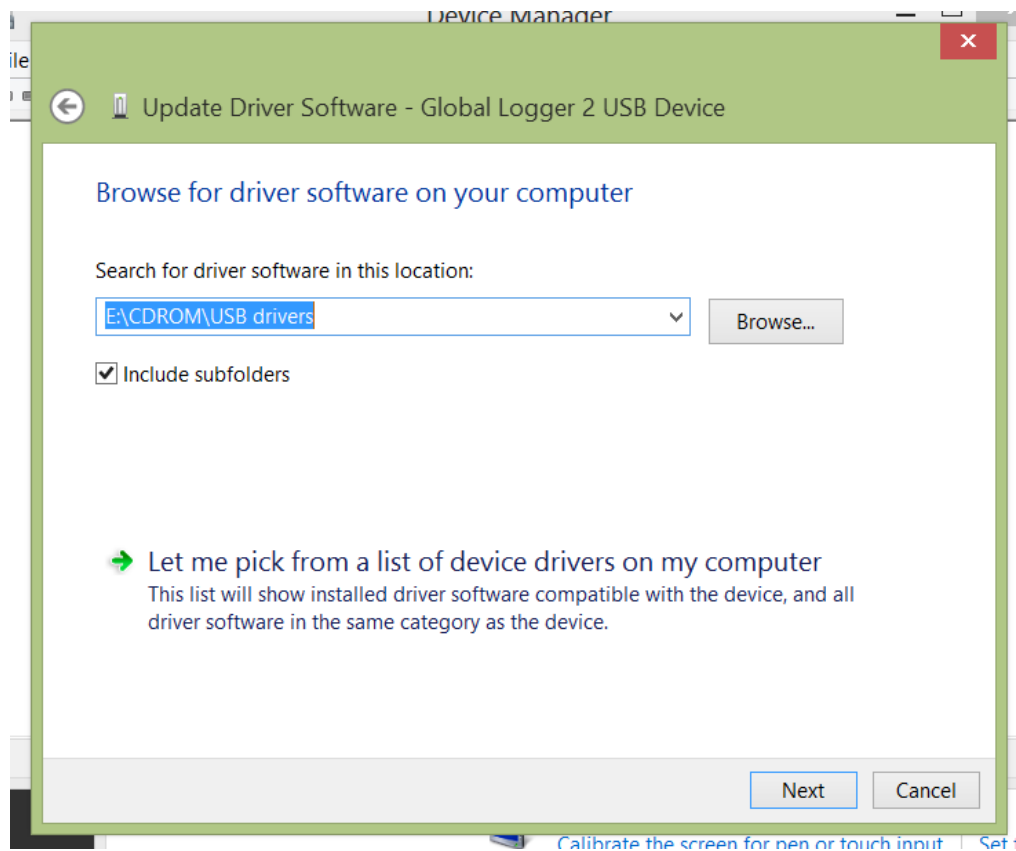
Select Browse My Computer for Driver Software. Browse to the location of the driver software, generally the D: drive; although, the drivers can be located on the local computer, on a network, or on a removable storage device such as a flash drive.

# Installing and Uninstalling Global Logger USB Drivers in Windows 8 32- and 64-bit Operating Systems



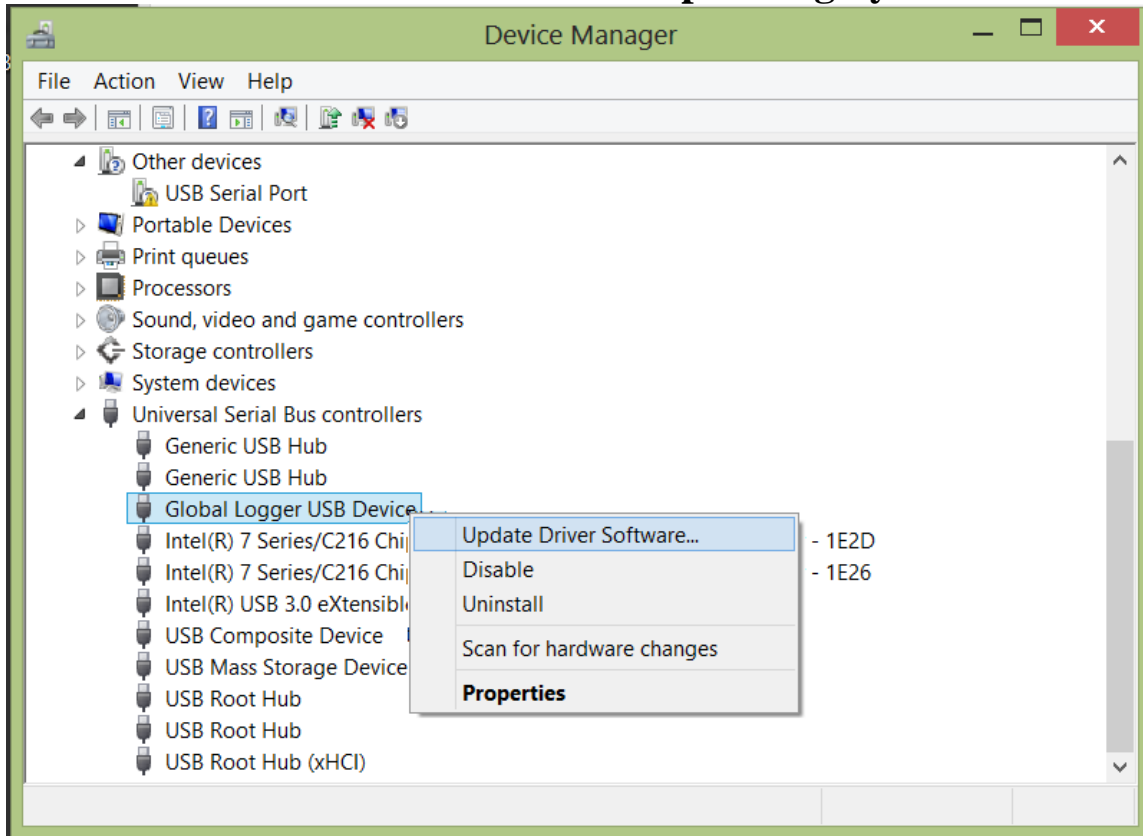
# Installing and Uninstalling Global Logger USB Drivers in Windows 8 32- and 64-bit Operating Systems

Find the location and click Next



Again, open the Device Manager, find the Global Logger item in the list of Universal Serial Bus Controllers, select it, then right-click and choose “Update Driver Software”.

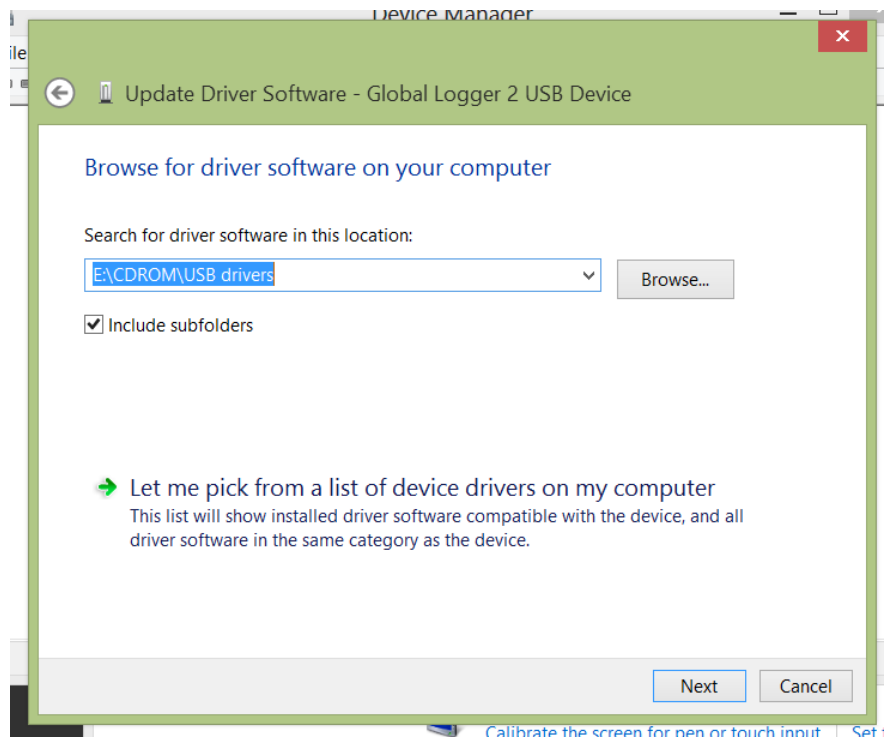
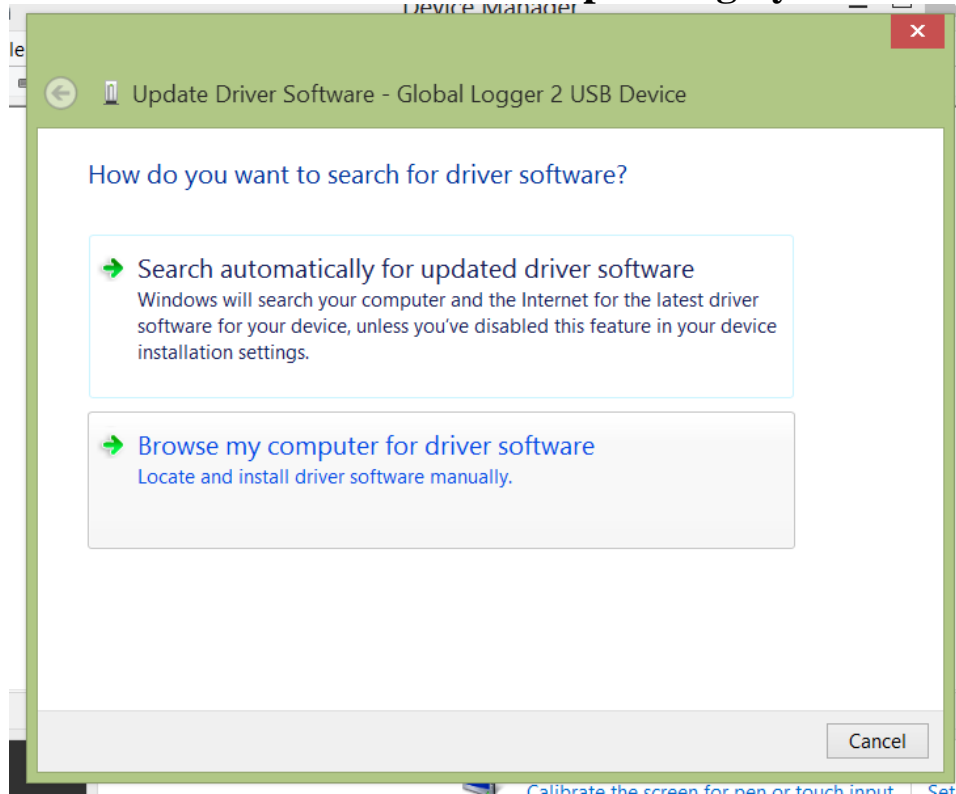
## Installing and Uninstalling Global Logger USB Drivers in Windows 8 32- and 64-bit Operating Systems



Choose the option to Browse my computer for driver software, choose the proper folder, and click Next.

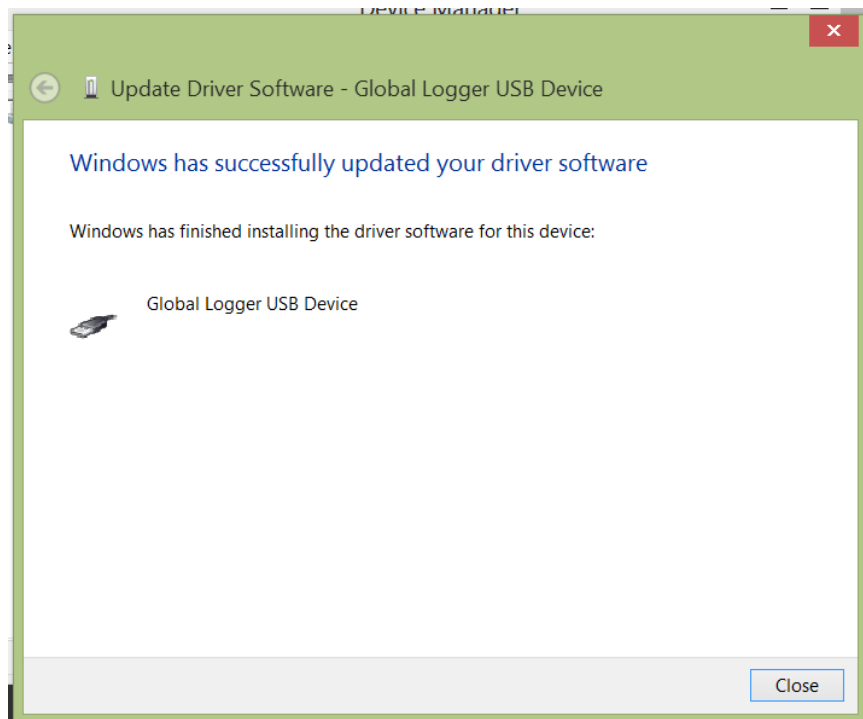
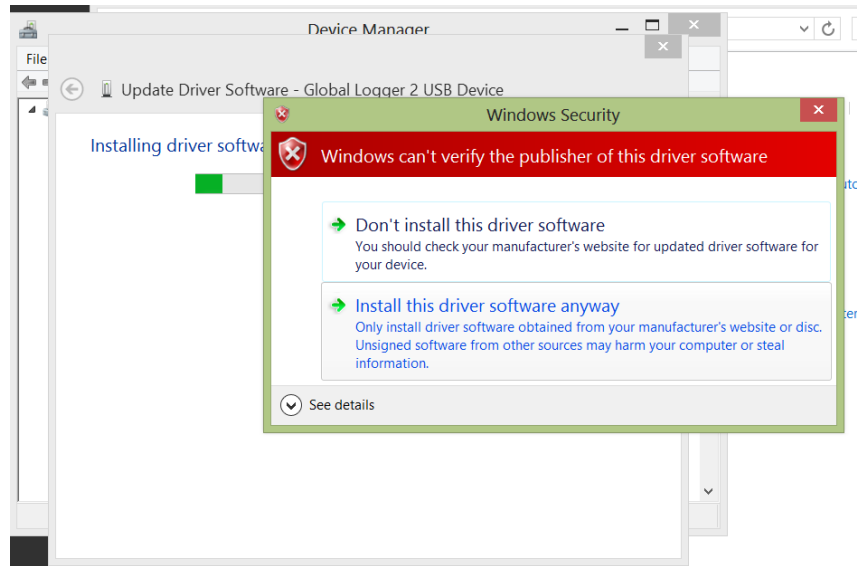


## Installing and Uninstalling Global Logger USB Drivers in Windows 8 32- and 64-bit Operating Systems



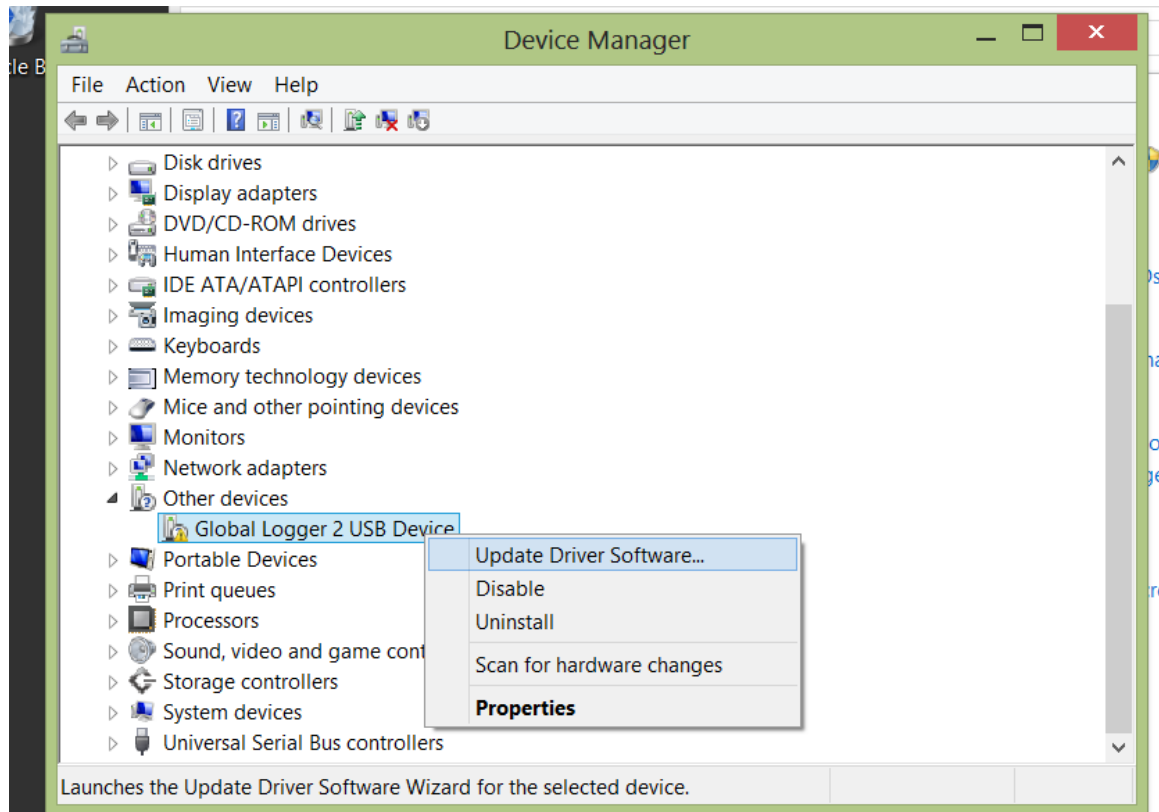
## Installing and Uninstalling Global Logger USB Drivers in Windows 8 32- and 64-bit Operating Systems

You will be prompted that Windows cannot verify the publisher of the driver software. Click **Install This Driver Software Anyway**. The first driver is installed.



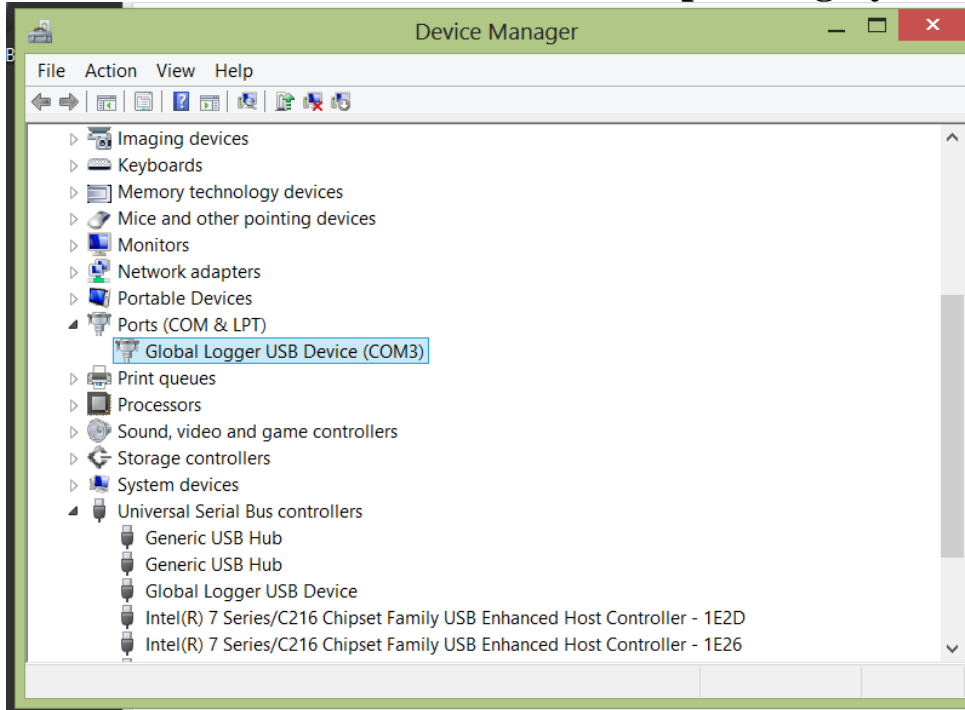
## Installing and Uninstalling Global Logger USB Drivers in Windows 8 32- and 64-bit Operating Systems

Now the Global Logger USB Device appears in the Universal Serial Bus Controllers section; However, it also still appears in the Other Devices section as USB Serial Port.



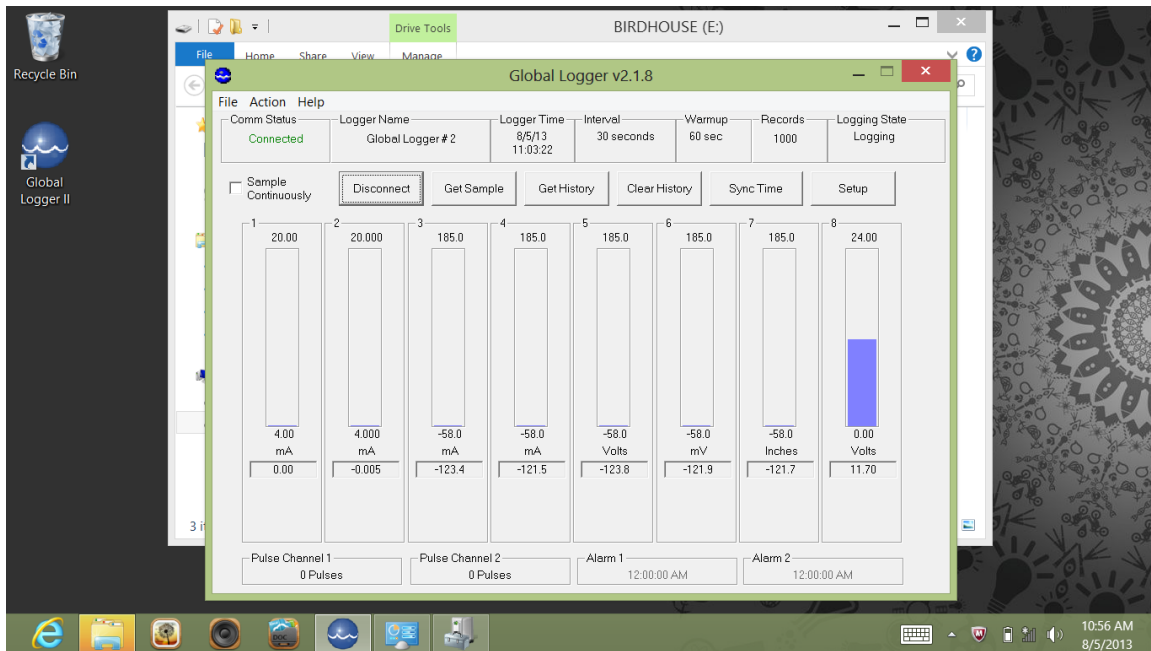
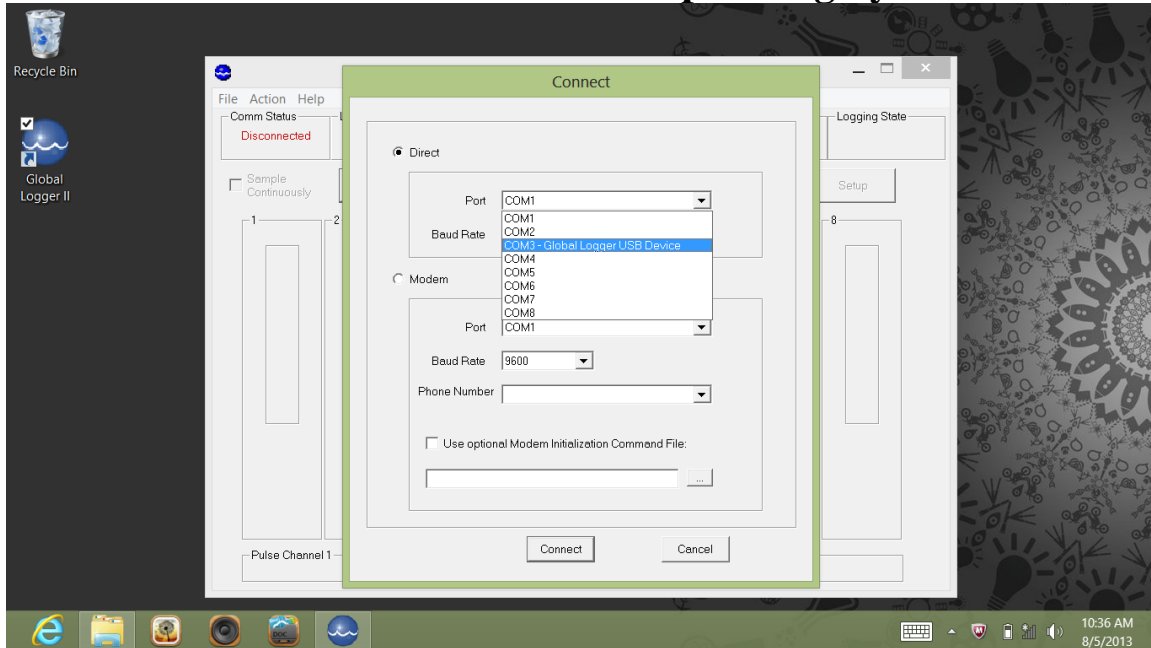
Select USB Serial Port in the Other Devices section, then right click. Perform the same actions as above, select Update Driver Software, browse to the driver location, select install anyway when the warning message appears to allow the second half of the VCP drivers to be installed for the Global Logger USB Device.

## Installing and Uninstalling Global Logger USB Drivers in Windows 8 32- and 64-bit Operating Systems



Now the Global Logger USB Device appears in both the Ports and USB Controllers sections, and it has disappeared from the Other Devices section. In the Ports list, the Global Logger USB Device is shown in COM3; use this port setting when connecting to a Global Water USB Data Logger. The drivers are now installed and ready to use.

# Installing and Uninstalling Global Logger USB Drivers in Windows 8 32- and 64-bit Operating Systems

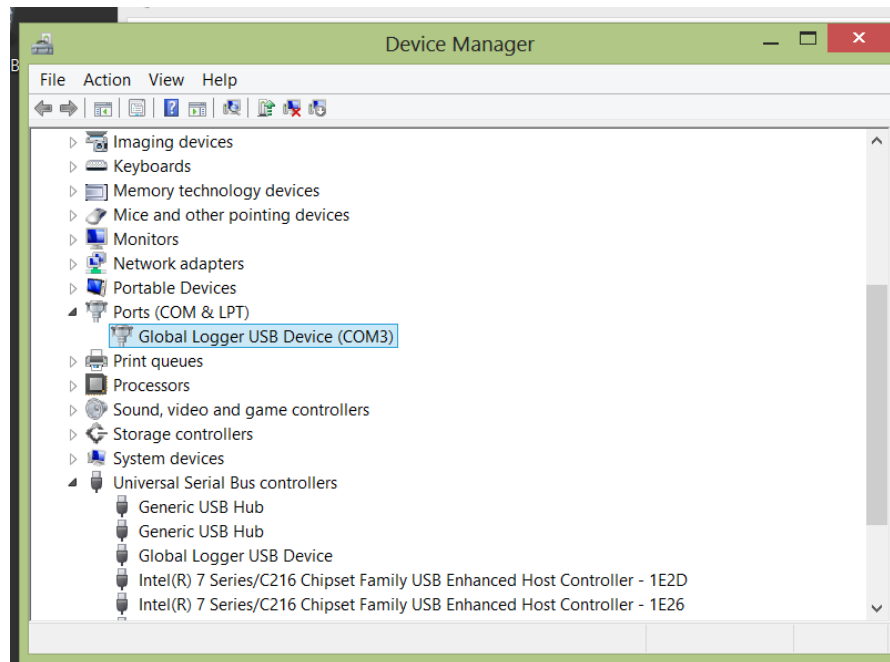


# Installing and Uninstalling Global Logger USB Drivers in Windows 8 32- and 64-bit Operating Systems

## Uninstalling Global Logger USB Drivers

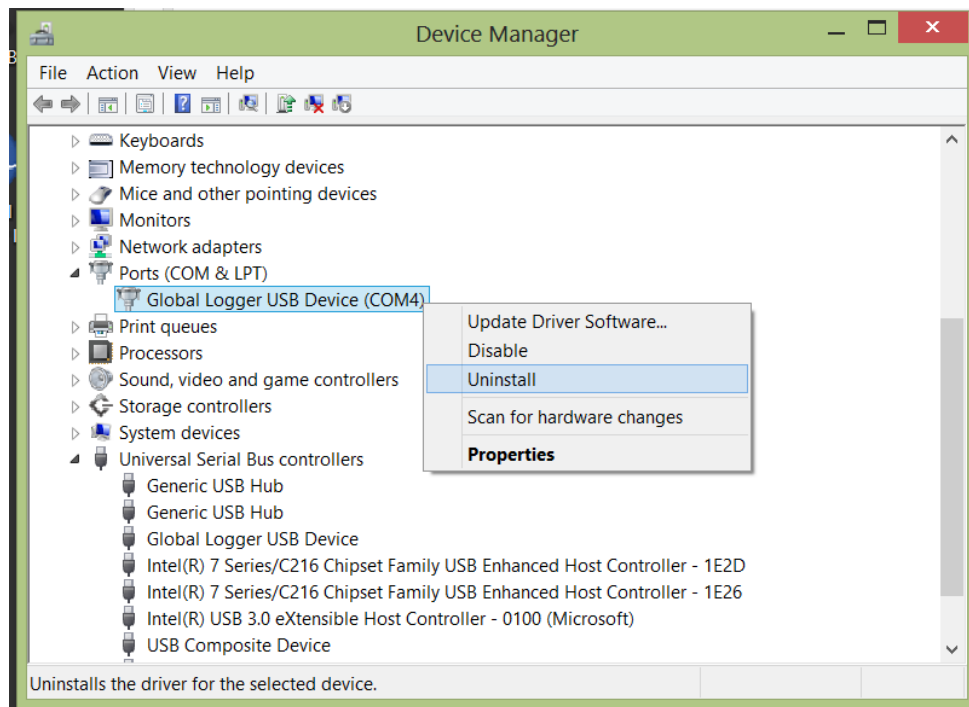
If the USB drivers for the Global Logger devices have been previously installed and are not working properly, it is possible that files have been corrupted or that older drivers intended for 32-bit operating systems have been installed. These corrupted or older drivers must be uninstalled before the correct drivers can be installed.

Connect the Global Water data logger to the USB port. Open the Device Manager. (The Device Manager can be opened in Windows 8 as described below.) Expand the Ports (COM & LPT) section and the Universal Serial Bus Controllers section by clicking on the right arrows to the left of the titles.

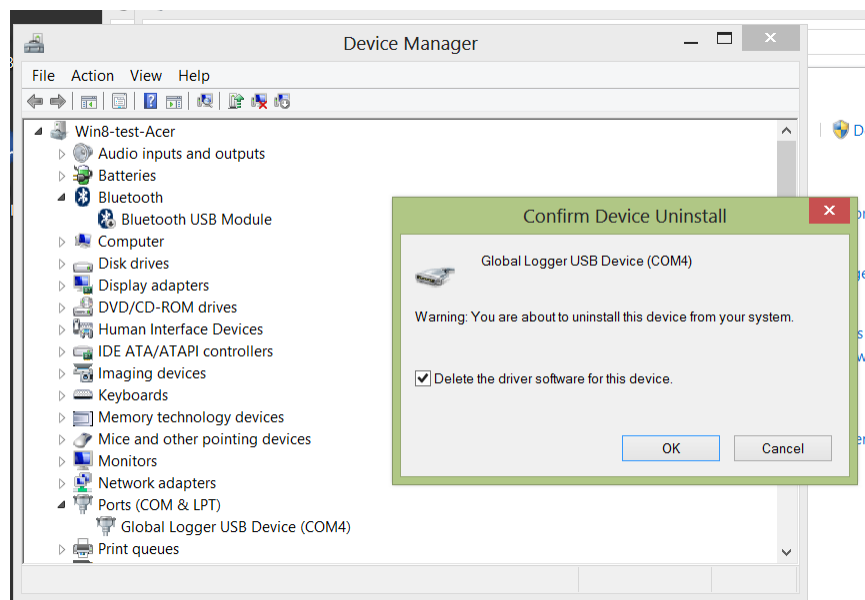


Global Water uses a virtual com port (VCP) driver. There are two separate drivers associated with VCP drivers, Serial and USB. **The serial driver must be uninstalled first.** In the Ports section, select the Global Logger USB Device by clicking on it. Right click and select Uninstall.

## Installing and Uninstalling Global Logger USB Drivers in Windows 8 32- and 64-bit Operating Systems

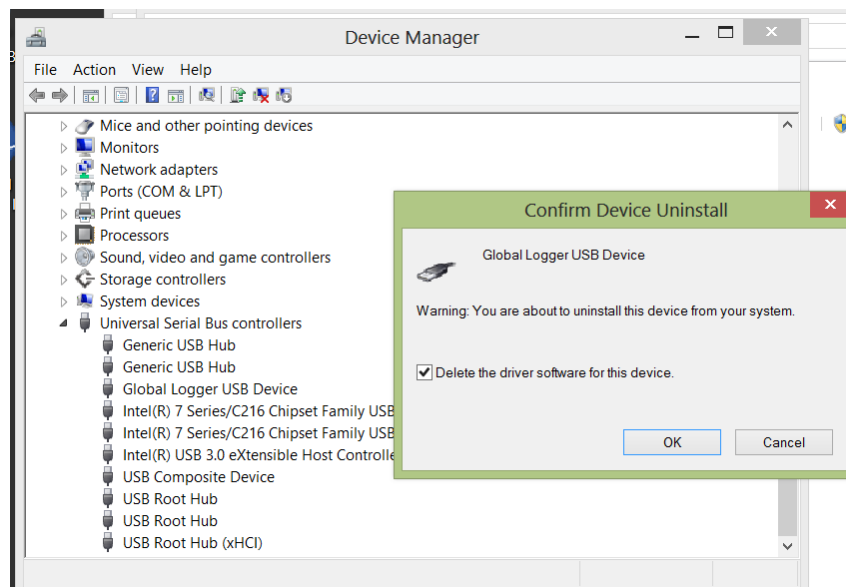
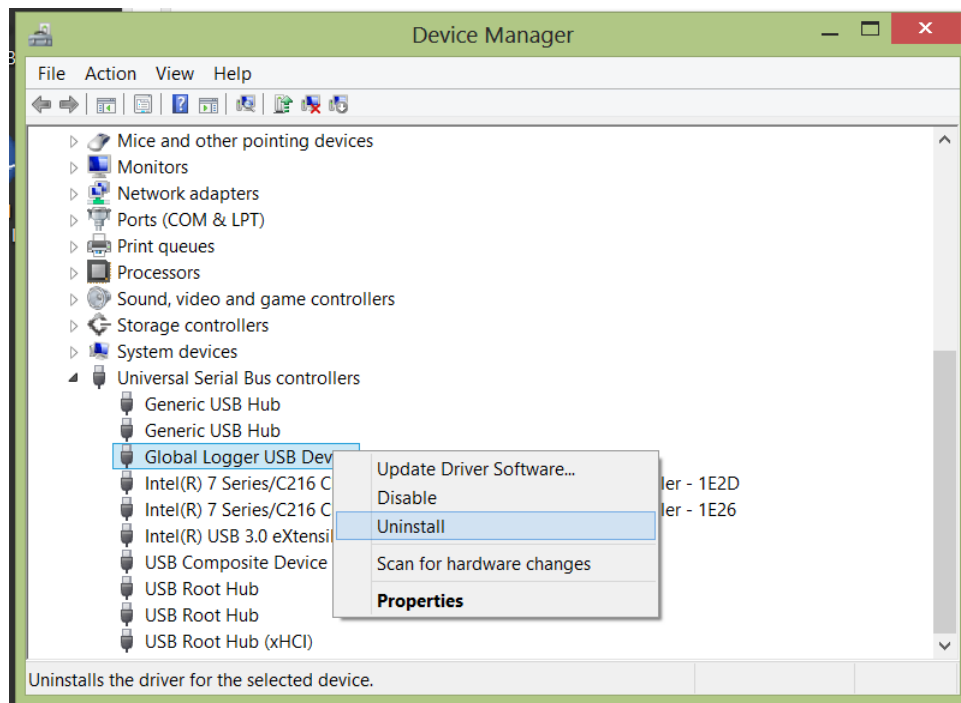


Windows provides a checkbox that allows the automatic deletion of all driver software files. Select this checkbox and click OK.



Perform this same procedure to delete the Global Logger USB Device drivers in the Universal Serial Bus Controllers section. Again, select the checkbox and click OK.

## Installing and Uninstalling Global Logger USB Drivers in Windows 8 32- and 64-bit Operating Systems



The drivers have now been successfully uninstalled.

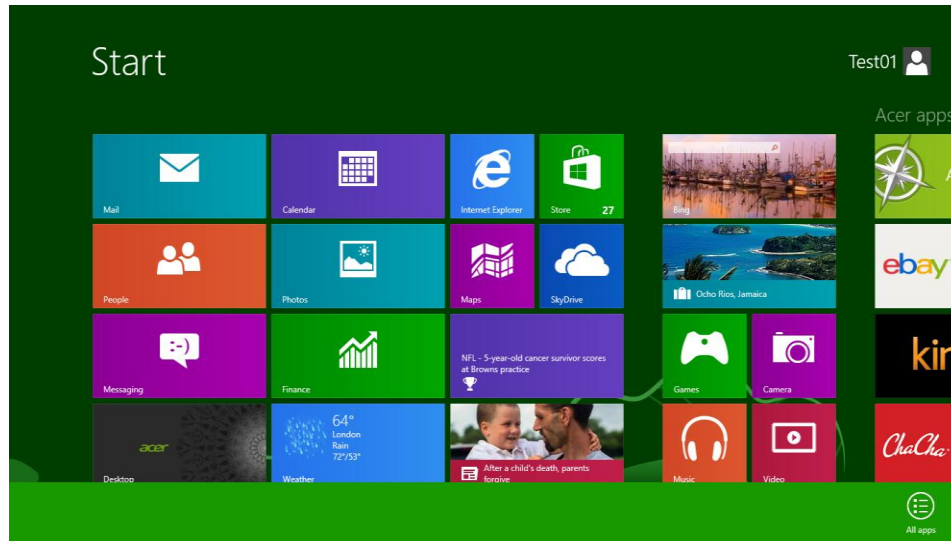
Disconnect the USB cable from the data logger before proceeding.



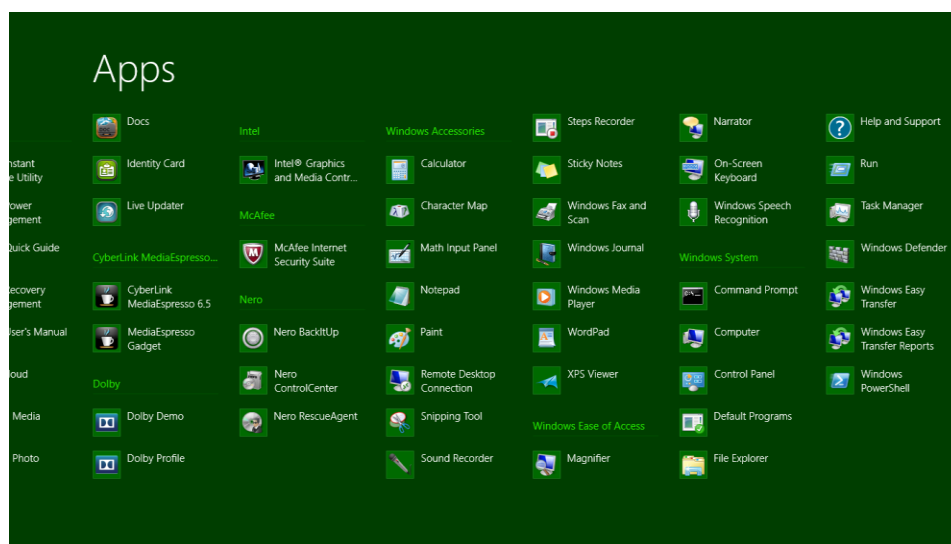
# Installing and Uninstalling Global Logger USB Drivers in Windows 8 32- and 64-bit Operating Systems

## Opening Control Panel and Device Manager in Windows 8

From the Start screen, swipe up from the bottom and tap the All Apps icon.

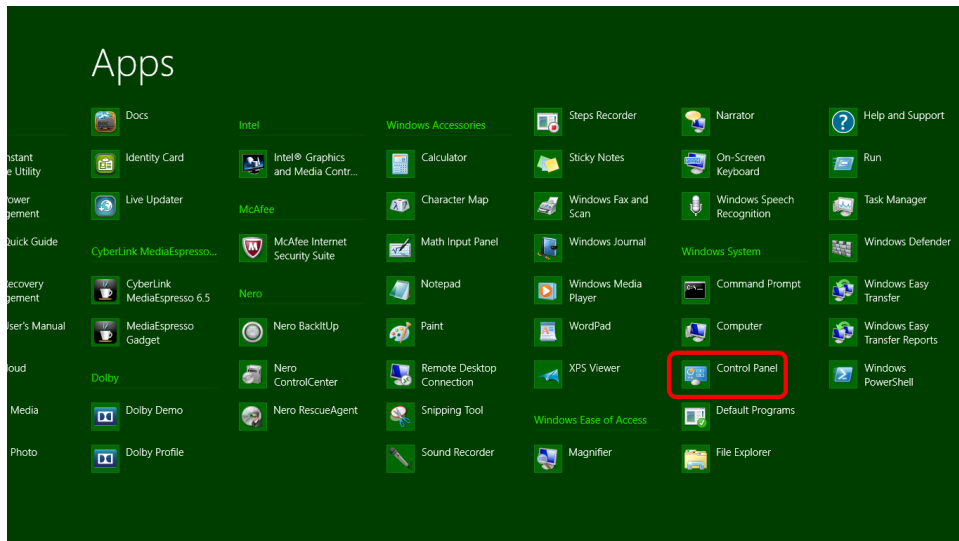


Once at the Apps screen, scroll or swipe to the right until you see the Windows System heading.

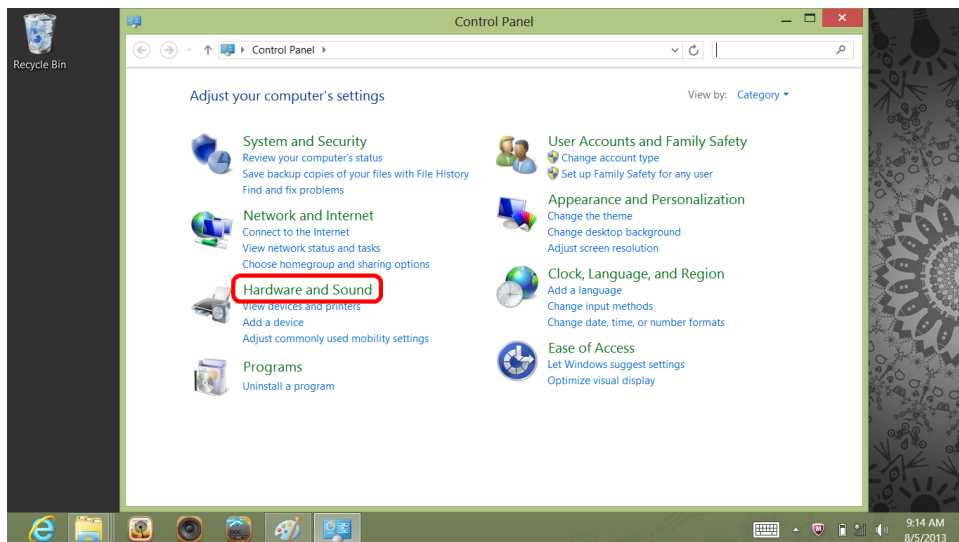


# Installing and Uninstalling Global Logger USB Drivers in Windows 8 32- and 64-bit Operating Systems

Tap or click on the Control Panel icon.



Tap or click on the Hardware and Sound link, if shown. In the Hardware and Sound window, click or tap Device Manager. (If the Control Panel view is set to small or large icons, then click or tap the Device Manager icon directly.)



# Installing and Uninstalling Global Logger USB Drivers in Windows 8 32- and 64-bit Operating Systems

