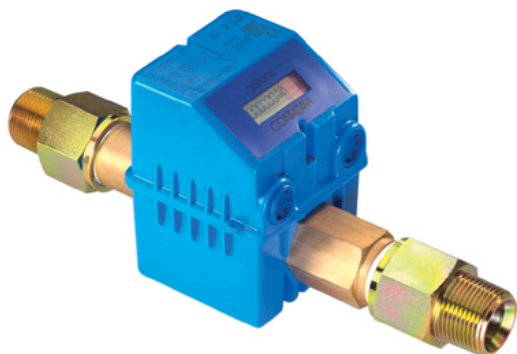


CZ2000 SUPER SMART WATER METER

Intelligent meters for water flow metering



- Meets AWWA standards
- 10 year warranty
- Detect leaks
- Mineral buildup proof
- Moving parts do not degrade or misrepresent flow information over time
- Remote monitoring available
- Ideal for multi-story buildings, shopping centers, homes, and anywhere water metering is necessary

Description

The CZ2000 series smart water meters eliminate the need for gears and mobile parts (including magnetic drives) achieving a meter of great precision at low flow volumes with minimal head loss. The smart water meters consist of an axial turbine facing the flow of water and supported on sapphire bushings and a tungsten shaft, which permits a clean rotation without friction and the total elimination of sub-metering effects caused by time and due to constant water hammers. The smart water meters contain a completely smooth and leaktight tube, eliminating sealing gaskets, and any transmission element between dry and wet parts.

Reading the meter:

The smart water meter uses two ways to read the flow data stored on it. The digital display will show the water consumption, any abnormal water flow including the possibility of leaks in the pipe, detection of possible faults in the electronic circuit, and battery status. The smart water meter can also be read electronically with a local PC or modem. The information stored on the meter show water consumption that is statistically outside the normal consumption rate which could be used to detect leaks.

Connecting to the meter:

The smart water meters have two connectors that allow them to communicate through a modem, a laptop, another system, or to other meters. They can be joined together so that at one single point the user can extract totally error-free information from up to 50 meters both quickly and safely. A telephone modem or GSM can be used at the reading point allowing access to data from anywhere just by dialing that telephone number.

Specifications (all meters)

Nominal thread: 3/4"-2"
Max Flow: 13-88 gpm
Nominal Flow: 6.6-44 gpm
Transition Flow: 0.1-0.66 gpm
Min Flow: 0.07-0.44 gpm
Start Up Flow: 0.03-0.2 gpm
Max service pressure: 230 psi
Temperature: 4-140 °F

Price List

CZ2000-3M

Smart Water Meter 3/4".....\$235

CZ2000 PC Monitoring Package

Software, 10" cable, Interconnect key, RS232 Interface Module DB9 to DB9 cable.....\$515

CZ2000-5M

Smart Water Meter 1".....\$280

CZ2000-10M

Smart Water Meter 1-1/2".....\$850

CZ2000-20M

Smart Water Meter 2".....\$1035

CZACC011

External Reading Point.....\$45

CZACC015

Internal Reading Point.....\$45

See web site, www.globalw.com, for more accessories.

Contact
Global Water
for all your
instrumentation
needs:

Water Level

Water Flow

Water Samplers

Water Quality

Weather

Remote Monitoring

Control



Global Water
The Leader in Water Instrumentation

In the U.S. call toll free
at 1-800-876-1172
International: 916-638-3429
Fax: 916-638-3270
Email: globalw@globalw.com

Visit our online catalog at:
www.globalw.com
Our Address:
11390 Amalgam Way
Gold River, CA 95670