

MTCDS Diagnostic Software

The MTCDS software provides access to pump controllers and MonitorPros.

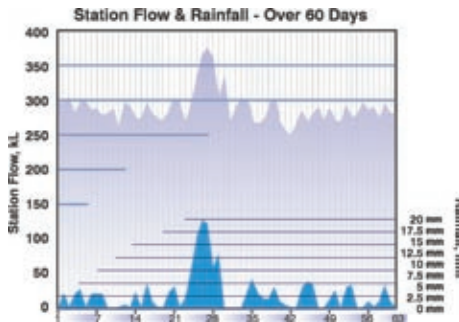


The MTCDS software adds another dimension to MultiTrodé's panel solution. Using the MTCDS control and diagnostic software provides access to pump controllers and MonitorPros.

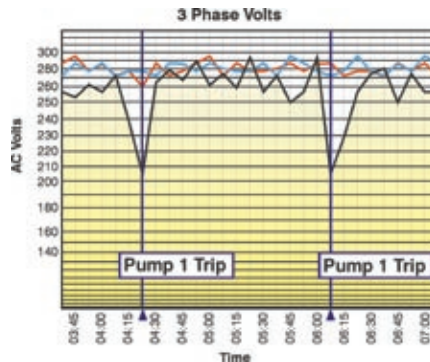
The last three months of station history can be downloaded - enabling faults to be easily pinpointed, inefficient pumps to be detected, and providing unparalleled data on flows for engineering planning.

- Configure and save settings for MT2PC, MT3PC, MonitorPro, MT2PC-VFD and MT3PC-VFD.
- Save individual station settings as standard setups for future use.
- Upgrade controller firmware.
- Full station history.
- Fault finding data for intermittent faults.
- Download up to 64,000 time-stamped historical events.
- Export data to Excel or Access for trending, reports and analysis.
- Preset trends and reports.

Valuable Engineering Data

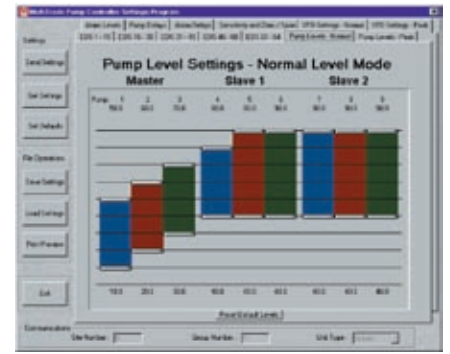


Fast Fault Finding



Pump Level Setting

All pump controller and MonitorPro parameters, including activation points (shown left), can be modified, saved and restored via the MTCDS software.



Station Status and Setup

Allows the user to print, export or copy the settings. The user can edit the text and then print, copy, or save to disk as a rich text format file (.rtf).

MULTITRODE PTY LTD			
PUMP CONTROLLER SETTINGS			
Date/Time: 02/04/05 08:45:14			
Note: * denotes current setting is not the factory default			
Site Name:	Site Number:		
Unit Software version:	Unit Serial Number:		
===== EDS Settings =====			
No.	Description	Current Value	(Display Value)
1	Charge / Discharge	Discharge	(0)
2	Level Alarm Mode	Level Alarm Auto Reset	(0)
3	Level Alarm Flash / Steady	Level Alarm Steady	(0)
4	Level Alarm Mute Time	10 min	(15)
5	Level Sensing Device	Probe	(0)
6	Level Sensor Timeout	10 min	(15)
7	Probe Single / Multi-sensor	Multi-Sensor Mode	(0)
8	Normal / Peak Levels	Use Normal Levels	(0)
9	Duty Select Key Operation	Quick-set Operation	(1)
10	Pulse Start Number of Pumps	1	(1)
11	Group Configuration	Fixed Group Sequence	(0)
12	Interpump Start Delay	10 sec	(5)
13	Interpump Stop Delay	0.25 sec	(0)
14	Random Duty Start Delay	0.25 sec	(0)
15	Max Pumps to Run	Off - No Limit	(0)
16	Consec Standby Starts for Duty Lockout	Off - No Limit	(0)
17	Desired Station Starts per Hour	Off	(0)
18	Override Level for Control Functions	90.0%	(180)

Page 1 of 6

Specifications

System Requirements for PC:

Min Processor	Celeron 300+
System RAM	64Mb
Req. H/Disk	50mb
Display	600x800@256 Higher res OK
Physical	CD Rom Drive Serial/Com port

MULTITRODE

www.multitrode.com

MultiTrodé Pty Ltd · Australia

Brisbane Technology Park 18 Brandl Street
PO Box 4633 Eight Mile Plains Qld 4113
Tel: +61 7 3340 7000 Fax: +61 7 3340 7077
sales@multitrode.com.au

MultiTrodé Inc · USA

6560 East Rogers Circle
Boca Raton Florida 33487
Tel: +1 561 994 8090 Fax: +1 561 994 6282
sales@multitrode.net